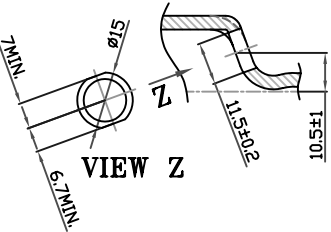
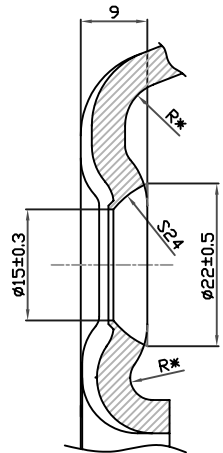


SECTION-AA

TOLERANCES UNLESS SPECIFIED	
DISTRIBUTION OF DIMNS.	TOLERANCES
BELOW 30	± 0.6
30 & BELOW 120	± 1.1
120 & ABOVE	+ 1.6

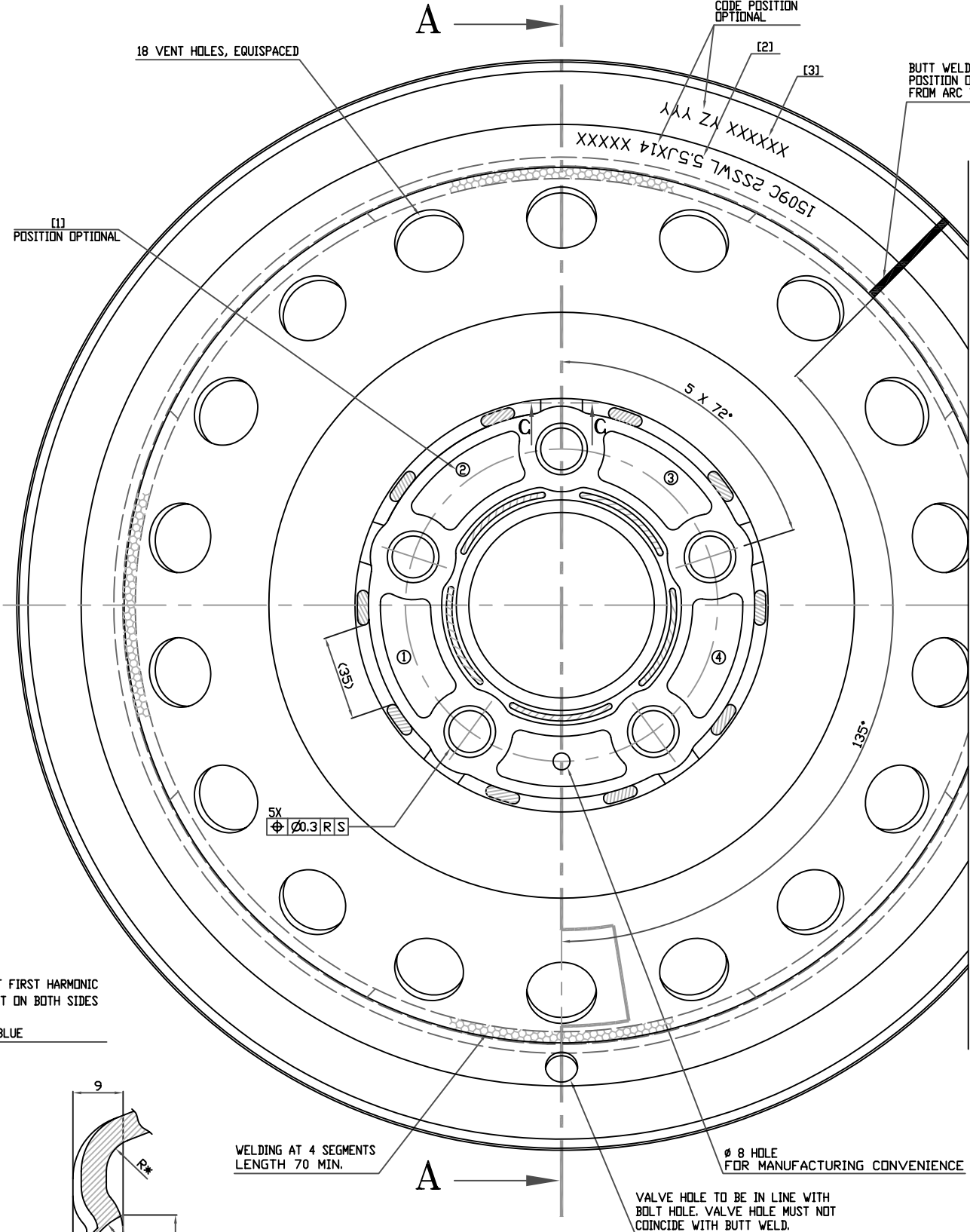


DETAIL-D



DETAIL-X (2:1)

\* - AS FORMED



SECTION-CC (2:1)

REV.	DATE	DESCRIPTION OF CHANGE	BY	APD.

2	DISC	SAPH 440 OR EQUI.	4.5±0.25
1	RIM	SAPH 440 OR EQUI.	3.7±0.25
S.No.	PART	RAW MATERIAL	THICKNESS
	NAME	DATE	
DRN.	VA	30/09/15	
CHD.	KK	30/09/15	
APD.	BK	30/09/15	
SCALE	1 : 1	TITLE	DRG. NO.
ALL DIMNS. IN M.M.		WHEEL COMP.-5.5JX14H2 (112 PCD, SPHERICAL)	CA-5.5Jx14-160A
			SHEET 01 OF 01

NOTES :-

- MARKING LOCATION ON DISC AS [1]  
MARKING ON DISC AS  
① DISC BATCH CODE AS KKA i.e. YEAR & MONTH OF MFG. & MATERIAL CODE  
② ET30  
③ DISC CODE  
④ SSWL160  
  
RIM CODE MARKING LOCATION AS [2]  
MARKING ON RIM AS YYMM 2SSWL 5.5JX14 XXXXX  
i.e. YEAR & MONTH OF MFG., MATL. CODE, MANUFACTURER'S IDENTIFICATION, SIZE SPEC. & RIM CODE  
  
ASSEMBLY CODE MARKING LOCATION AS [3]  
ASSEMBLY MARKING ON RIM AS XXXXXX YZ YYY  
i.e. DATE, MONTH & YEAR OF MANUFACTURING, SHIFT, MACHINE NO. & WHEEL NO.
  - PAINT (AS PER - TUV 4.6.6/SS DIN 50021)  
PRIMER COAT : C.E.D. BLACK  
SALT SPRAY RESISTANCE : 384 Hrs MIN.  
FINISH PAINT : POLYCHROMATIC SILVER GREY  
ON FRONT VISIBLE PORTION ONLY.
  - WHEEL LOAD : 900 Kg
  - CORNER FATIGUE TEST (AS PER - TUV 4.6.1)  
BENDING MOMENT - 562.7 Kgfm ( 5519.9 Nm )  
MINIMUM NUMBER OF LOAD CYCLES AT 75% OF BENDING MOMENT : 2.0X10<sup>4</sup>  
MINIMUM NUMBER OF LOAD CYCLES AT 50% OF BENDING MOMENT : 2.3X10<sup>5</sup>
  - RADIAL FATIGUE TEST (AS PER - TUV 4.6.2)  
TEST LOAD - 1800 Kg ( 17658N )  
MINIMUM ROLLING DISTANCE OR NUMBER OF WHEEL REVOLUTIONS  
2000 Km OR 1.0 X 10<sup>6</sup> CYCLES
  - WELD SHEAR STRENGTH : 30 TON MIN.
  - STATIC OUT OF BALANCE : 600 gm-cm MAX.
  - REF. WHEEL WEIGHT : ~9.9Kg
  - APPLICABLE TYRE SIZE : 205/70 R14, 195/70 R14, 195/65 R14, 185/70 R14
  - APPLICABLE VALVE - TR 13, TR 413
  - WHEEL SHOULD BE SUITABLE FOR USE IN TUBELESS TYRES.
- NOTE :
- BE FREE FROM POOR WELDING, AIR LEAKS AND CRACKS  
DUE TO PRESSING