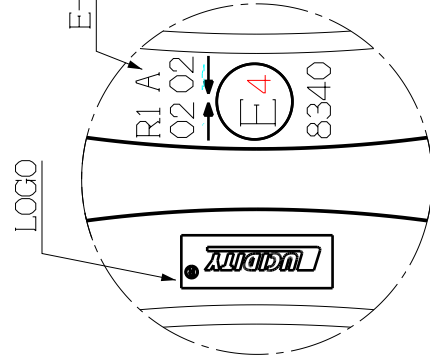
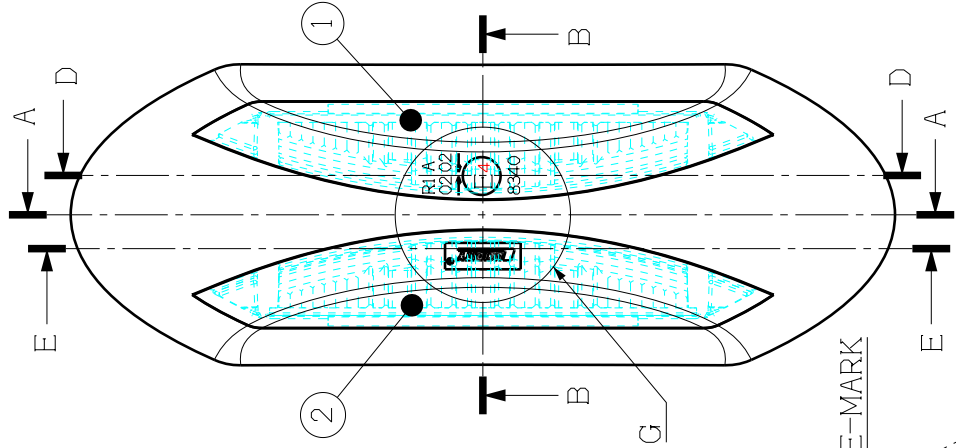
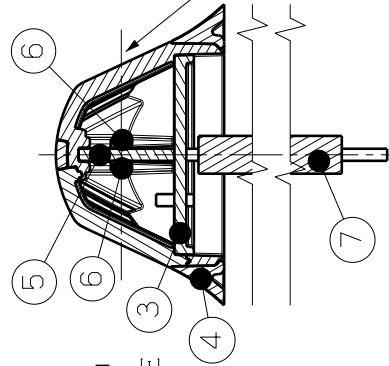


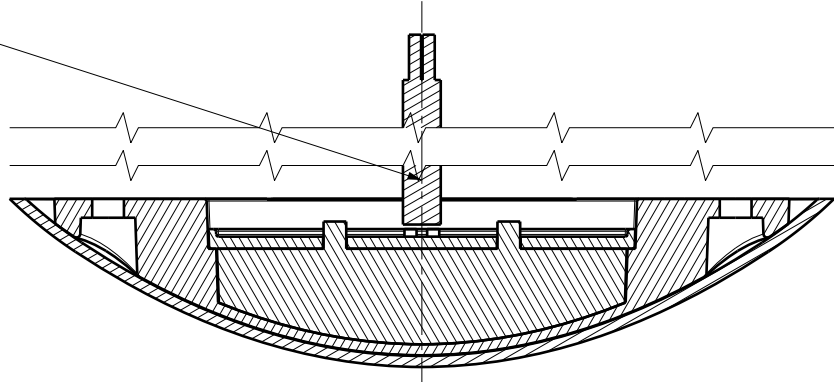
| GENERAL TOLERANCE | |
|---|-----------|
| ASSEMBLY PARTS | |
| DIMENSION | TOLERANCE |
| ≤4 | ±0.04 |
| >4~≤12 | ±0.08 |
| >12~≤40 | ±0.12 |
| >40 | ±0.16 |
| GENERAL TOLERANCES FOR NOMINAL DIMENSIONS WITHOUT SPECIFIED TOLERANCE | |



DETAIL G
SCALE: 2:1



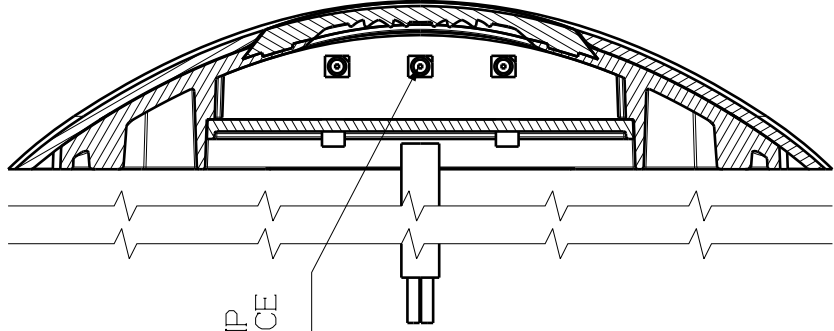
SECTION B-B
SCALE : 1:1



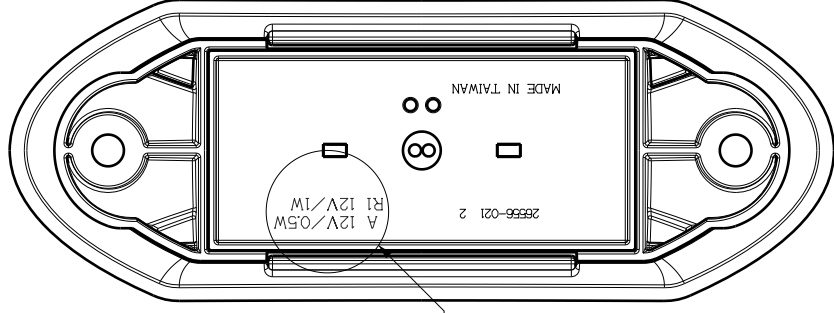
SECTION A-A
SCALE : 1:1



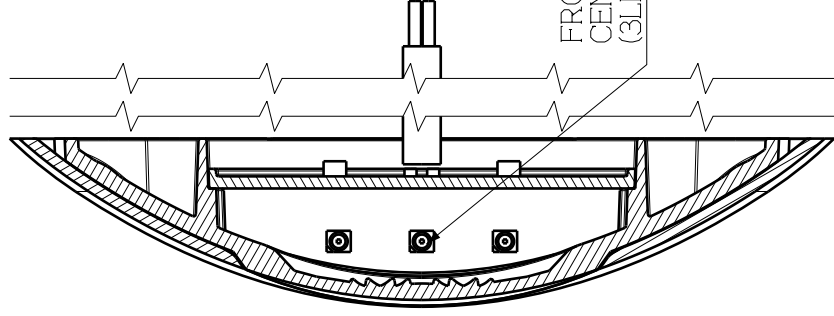
DETAIL F 2:1



SECTION E-E
SCALE : 1:1




BACK VIEW



SECTION D-D
SCALE : 1:1

NOTE: 1. THE LAMP INSTALLATION RIGHT SIDE
2. THE LAMP REVOLVE 180° INSTALLATION LEFT SIDE
3. a - AXIS OF REFERENCE
b - LONGITUDINAL PLANE OF VEHICLE.
c - HORIZONTAL PLANE OF VEHICLE.
4. THE BASE AND LENS ARE COMBINED BY EPOXY GLUE

| | | | | |
|---|------------|--------|-----|-------------|
| 7 | CABLE WIRE | #16/17 | 1 | WHITE/BLACK |
| 6 | LED | SMD | 3,3 | CLEAR,RED |
| 5 | PCB | FR4 | 1 | |
| 4 | FRAME | ABS | 1 | BLACK |
| 3 | HOUSING | ABS | 1 | WHITE |
| 2 | LENS | PC | 1 | RED |
| 1 | LENS | PC | 1 | CLEAR |

| | | | | | | |
|----------------|---------------|----------|----------|---|---------------|--------------|
| SCALE | 1 : 1 | APPR BY | | DWG NAME | 26556-1B | ECE APPROVED |
| FILE NAME | 26556-1B-5500 | CHK BY | | | | |
| CUSTOM PART NO | | DESNR BY | LEO | DWG NO. | 26556-1B-5500 | SYM |
| 3RD ANGLE | | DRAWN BY | LEO |  LUCIDITY[®] LUCIDITY ENTERPRISE CO.,LTD. No. 18, Gongye 1st Rd, Annan Dist., Tainan city, 70995, Taiwan | | |
| UNIT:mm | | DWG DATE | 05-02-12 | | | |



**THE NETHERLANDS**
(N E D E R L A N D)**COMMUNICATION**Concerning ⁽¹⁾:

- approval granted
- ~~approval extended~~
- ~~approval refused~~
- ~~approval withdrawn~~
- ~~production definitely discontinued~~

of a type of device pursuant to Regulation number 7.

Approval number: E4-7R-02 8340**Extension number: 00***Approval mark:**Indication of the approval mark for the device on the right side.**The left side shall be symmetrical.*

1. Trade name or mark of the device : LUCIDITY
2. Manufacturer's name for the type of device : 26556-B, Front and Rear position lamp
3. Manufacturer's name and address : Lucidity Enterprise Co., Ltd.
No.18, Gong-Ye Road Section 1,
Tainan Science Industrial Zone 70955-
Tainan City-- Taiwan/R.O.C.
4. If applicable, name and address of the manufacturer's representative : Not applicable



5. Submitted for approval on : April 05, 2012
6. Technical service responsible for conducting approval tests : TÜV NORD Mobilität GmbH & Co. KG
Institut für Fahrzeugtechnik und Mobilität
Adlerstrasse 7, D-45307 Essen
7. Date of report issued by that service : May 02, 2012
8. Number of report issued by that service : TW007-A0-120109
9. Concise description :
- 9.1. By category of lamp : R1 ; A
- For mounting either outside or inside or both ⁽¹⁾ : Outside
- Colour of light emitted : red/white
- Number and category(ies) of filament lamp(s) : Rear position lamp : 3xLED
Front position lamp : 3xLED
- Voltage and wattage : Rear position lamp : 12V, 1W
Front position lamp : 12V, 0.5W
- Light source module specific identification code : Not applicable
- Only for installation on M1 and/or N1 category vehicles : ~~yes~~/no ⁽¹⁾
- Only for limited mounting height of equal to or less than 750mm above the ground : ~~Yes~~/no ⁽¹⁾
- Geometrical conditions of installation and relating variations, if any : ---
- Application of an electronic light source control gear/variable intensity control: not applicable
- (a) Being part of the lamp : ~~Yes~~/no ⁽¹⁾
- (b) Being not part of the lamp : ~~Yes~~/no ⁽¹⁾
- Input voltage(s) supplied by an electronic light source control gear/variable intensity control : Not applicable



Electronic light source control
gear/variable intensity control
manufacturer and identification
number (when the light source control
gear is part of the lamp but is not
included into the lamp body) : Not applicable

Variable luminous intensity : ~~Yes~~/no⁽¹⁾

9.2. Function(s) produced by an interdependent lamp forming part of an interdependent lamp system: Not applicable

Front position lamp : ~~yes~~/no⁽¹⁾

R1 Rear position lamp : ~~yes~~/no⁽¹⁾

R2 Rear position lamp : ~~yes~~/no⁽¹⁾

S1 Stop lamp : ~~yes~~/no⁽¹⁾

S2 Stop lamp : ~~yes~~/no⁽¹⁾

S3 Stop lamp : ~~yes~~/no⁽¹⁾

S4 Stop lamp : ~~yes~~/no⁽¹⁾

End-outline marker lamp : ~~yes~~/no⁽¹⁾

10. Position of the approval mark : On the lens

11. Reason(s) for extension (if applicable) : Not applicable

12. Approval : granted/~~extended/refused/withdrawn~~⁽¹⁾

13. Place : Zoetermeer

14. Date : 22-MAY-2012

15. Signature :



The image shows a handwritten signature in blue ink. To the right of the signature is a circular official stamp. The stamp features a coat of arms with a crown on top. Below the coat of arms, the text 'JE M' is visible. To the right of the coat of arms, the name 'J.D. Vecht' is printed in a bold, sans-serif font. Below the name, the letters 'RDW' are printed. The entire stamp is enclosed in a circular border.

16. The list of documents deposited with the Administrative Service which has granted approval is annexed to this communication and may be obtained on request.

⁽¹⁾ Strike out what does not apply.