

Test Report
No. : TW004-B0-090101
ECE Regulation No.4



Type : 26256CK-G
Manufacturer : LUCIDITY ENTERPRISE CO., LTD.

Test Report

Agreement

concerning the adoption of uniform technical prescriptions for the wheeled vehicles, equipment and parts which can be fitted and/or be used on wheeled vehicles and the conditions for reciprocal recognition of approvals granted on the basis of these prescriptions

Uniform provisions concerning the approval of devices for the illumination of rear registration plates of power-driven vehicles and their trailers

ECE-Regulation 4

including all amendments until

Series of Amendments: 00
supplement 16

dated: July 15, 2013

Approval status	
ECE	Number of approval
	E4-4R-00 4259 01

Test Report
No. : TW004-B0-090101
ECE Regulation No.4



Type : 26256CK-G
Manufacturer : LUCIDITY ENTERPRISE CO., LTD.

Test object(s) and general test information

Test object(s)

identification number : 26256CK-G
version : Rear registration plate lamp
Worst case : Not applicable

General test information

Order issued by
(if different from manufacturer) : ---
Test object / test vehicle received
on : not applicable
Test date : December 10 ~ December 18, 2013
Test site : LUCIDITY ENTERPRISE CO., LTD.
No.18, Gongye 1st Road, Annan District,
70955-Tainan City-Taiwan/ROC
Remark : ---

Test Report
No. : TW004-B0-090101
ECE Regulation No.4



Type : 26256CK-G
Manufacturer : LUCIDITY ENTERPRISE CO., LTD.

Test minutes

Test facilities : The test facilities are in compliance with the requirements of the regulation.

Test results : ~~The type has been examined according to the amendments mentioned in appendix 0. See attached.~~
~~An actual test of the type was not required. The results of the previous tests are still valid. delete if unnecessary.~~

Temperature / Relative Humidity of laboratory : 24° C / 49 %

Markings : The trade mark is marked clearly legible and indelible on the lens ~~and on the housing~~ of the lamp.

The rate voltage and rate wattage of the light source are clearly legible and indelible marked on the base.

Space for the approval mark and for additional symbols is provided on the lens (the lens can not be separated from the housing).

Test Report
No. : TW004-B0-090101
ECE Regulation No.4



Type : 26256CK-G
Manufacturer : LUCIDITY ENTERPRISE CO., LTD.

General specifications : The devices for the illumination of rear registration plates shall be so constructed that the whole surface of the plate will be visible within the angles given in Annex 4 according to Paragraph 5 of the Regulation.

~~All measurements shall be made with the standard filament lamp of the category prescribed by the manufacturer, the supply voltage being so regulated as to produce the reference luminous flux.~~

All measurements on the devices with non-replaceable light sources shall be made at ~~6.75 V~~, 13.5 V ~~or 28.0 V~~ respectively.

For any rear registration plate illuminating device, except those equipped with filament lamp(s), the luminance values measured after one minute and after 30 minutes of operation shall comply with the minimum requirements. The luminance distribution after one minute of operation can be calculated by applying at each test point the ratio of luminance values measured in one point after one minute and after 30 minutes of operation.

Colour of light : The light of the lamp used in the illuminating device is sufficiently colourless not to cause any appreciable change in the colour of the registration plate according to Paragraph 6 of the Regulation.

Photometric tests : The light emitted was obtained by means of LED of the category stated in Appendix L-9, ~~producing the required luminous flux.~~

The angle of incidence of the light on the surface of the plate shall not exceed 82 degrees at any point of the surface to be illuminated, this angle being measured from the extremity of the device's illuminating area which is furthest from the surface of the plate.

If there is more than one illuminating device, the foregoing requirement shall apply only to that part of the plate intended to be illuminated by the device concerned.

Luminance measurements shall be made on a diffuse colourless surface with known diffuse reflection factor, of the same dimensions as the registration plate, placed in the position normally occupied by it and 2 mm in front of its holder.

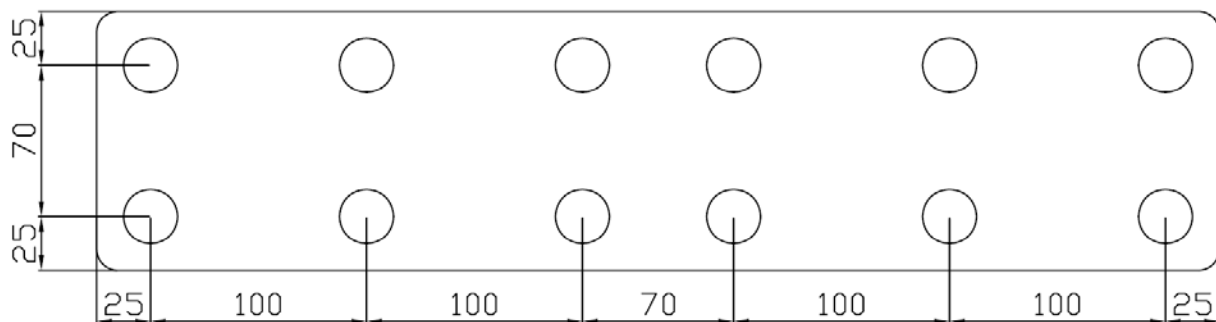
Test Report
No. : TW004-B0-090101
ECE Regulation No.4

Type : 26256CK-G
 Manufacturer : LUCIDITY ENTERPRISE CO., LTD.

Luminance measurements shall be made perpendicularly to the surface of the diffuse colourless surface with the tolerance of 5 degrees in each direction at the points shown in Annex 3 to this Regulation, each point representing a circular area of 25 mm in diameter. The measured luminance shall be corrected for the diffuse reflection factor 1.0.

The Photometric characteristics prescribed in paragraph 9 of the Regulation.

Result of photometric tests of the rear registration plate lamp
 (devices for illuminating a wide plate (520 x 120 mm))



(Sample 12V)

Luminance B of the measuring points of the plate [cd/m ²]								
X-axis[mm]		25	125	225	295	395	495	Required value
vertical angle sample 1	25	37.70	14.89	6.17	6.91	17.76	53.40	2.5
	95	6.80	10.27	4.99	4.35	8.09	3.90	2.5
vertical angle sample 2	25	40.50	18.76	7.20	7.47	18.02	60.80	2.5
	95	4.80	9.56	4.92	4.57	9.08	4.75	2.5

	Sample 1	Sample 2	Require value
Minimum luminance Bo	3.90	4.57	2.5
Maximum gradient	7.07	8.1	≤ 2xBo

Decision : ☒ Pass or ☐ Failed

Test Report
No. : TW004-B0-090101
ECE Regulation No.4



Type : 26256CK-G
 Manufacturer : LUCIDITY ENTERPRISE CO., LTD.

(Sample 24V)

Luminance B of the measuring points of the plate [cd/m ²]								
X-axis[mm]		25	125	225	295	395	495	Required value
vertical angle sample 1	25	36.80	14.54	6.02	6.73	17.17	52.60	2.5
	95	6.78	10.08	4.85	4.24	7.89	3.80	2.5
vertical angle sample 2	25	39.90	16.58	6.55	6.85	16.15	58.50	2.5
	95	4.54	9.03	4.64	4.30	8.59	4.51	2.5

	Sample 1	Sample 2	Require value
Minimum luminance Bo	3.80	4.30	2.5
Maximum gradient	6.97	7.71	≤ 2xBo

Decision : ☒ Pass or ☐ Failed

Explanatory note : Not applicable

Test Report
No. : TW004-B0-090101
ECE Regulation No.4



Type : 26256CK-G
Manufacturer : LUCIDITY ENTERPRISE CO., LTD.

Remark concerning tested object(s)

All versions of the reflectors as stated in the information document are covered with the tested version(s) and test object(s) respectively.

Appendices

- L Technical information about the lamp type according to Annex 2 for the communication of the ECE Regulation No.4 type approval.
- 0 List of modifications : see attached
- 1 Information folder no. : 26256CK-G-01

Statement of conformity

The information folder and the type described there comply with the requirements in the above mentioned ~~directive~~ regulation.

The samples / test vehicles used, were representative in terms of the type to be approved.

The technical report (including appendix L & 0) consists of pages 1 to 9 and shall not be reproduced except in full without the written approval of the testing laboratory.

Certification Number: RDW-99050016

Taipei, December 27, 2013

IFM/#



Cronus Huang
Engineer

Test Report
No. : TW004-B0-090101
ECE Regulation No.4



Type : 26256CK-G
Manufacturer : LUCIDITY ENTERPRISE CO., LTD.

Technical information about the lamp type according to Annex 2
for the communication of the ECE Regulation No.4 type approval

Appendix L

1. Trade name or mark of the device : LUCIDITY
2. Manufacturer's name for the type of device : 26256CK-G, Rear registration plate lamp
3. Manufacturer's name and address : LUCIDITY ENTERPRISE CO., LTD.
No.18, Gongye 1st Road, Annan District,
70955-Tainan City-Taiwan/ROC
4. If applicable, name and address of manufacturer's representative : not applicable
5. Submitted for approval on : December 16, 2013
7. Date of test report : December 27, 2013
9. Concise description

Device for illuminating : a wide plate

Number and category of filament lamp(s) : 3xLED

Voltage and Wattage : 12V/0.45W ; 24V/1W
10. Location of approval mark : on the lens
11. Reason(s) for extension : Modify the setting position between the registration plate and registration plate lamp.
(Refer to the drawing)

Test Report
No. : TW004-B0-090101
ECE Regulation No.4



Type : 26256CK-G
Manufacturer : LUCIDITY ENTERPRISE CO., LTD.

List of modifications

Appendix 0

Correction of	:	---
Modification of	:	Modify the setting position between the registration plate and registration plate lamp. (Refer to the drawing)
Addition of	:	---
Deletion of	:	---

1. Specification Data

December 18, 2013

Type		26256CK-G
Function		Rear registration plate lamp */
Light Color		White
Rate	Voltage	12V / 24V
	Wattage	0.45W / 1W
Application Regulation (ECE)		ECE R4.00
Location of marking	Filament lamp category	LED*3
	Trade mark	LUCIDITY
		On the lens
	Approval mark	On the lens

*/ This device shall be installed on a vehicle only as part of a pair of devices

2. Construction and Material :

Construction	Material	Remarks
Lens	PC	Clear
Housing	PP	--
Base	PA6+15%MF	Black
Reflector	ABS	Metalized aluminum coated
Frame	ABS	Black

3. Name and Address of Manufactory : Lucidity Enterprise Co., Ltd.

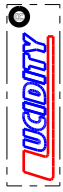
No.18, Gongye 1st Road, Annan District,
70955-Tainan City-Taiwan/ROC

4. Name and address of representative of manufacturer: Not applicable

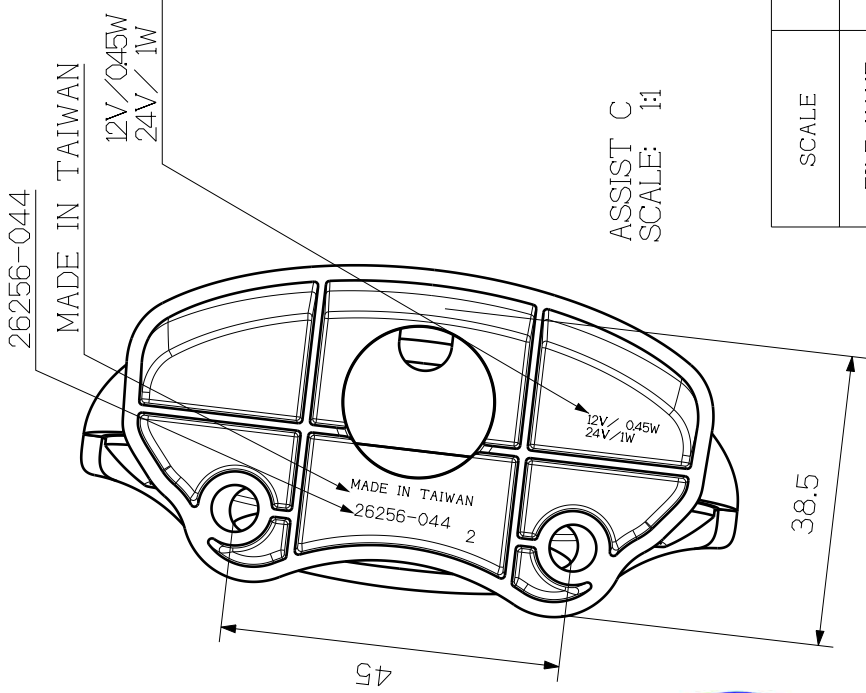
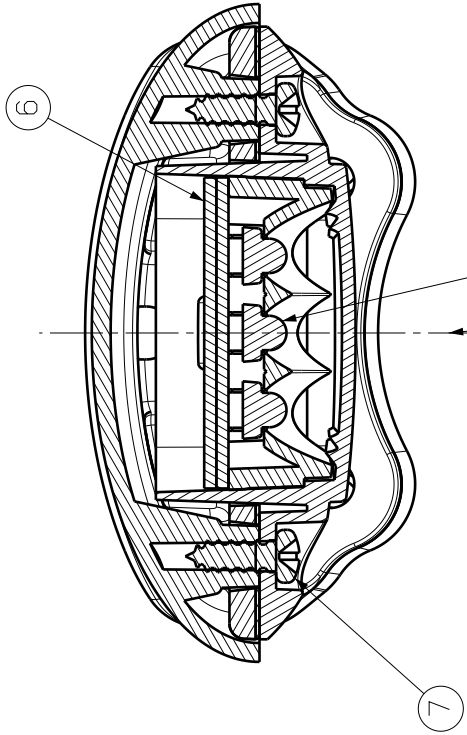
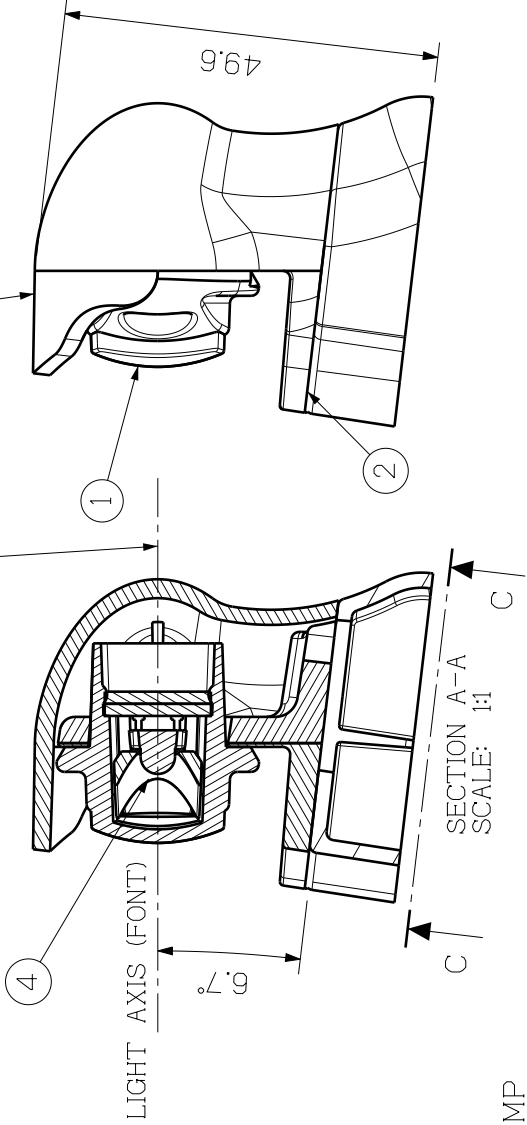
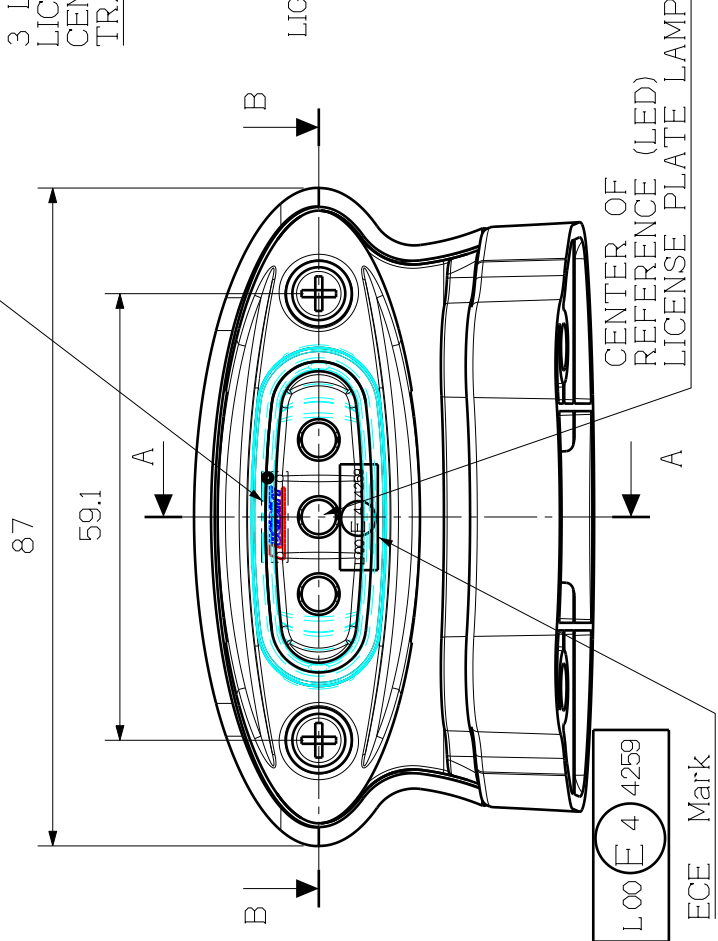


This document (including drawing) consists of 3 pages

A3	1		2		3		4		5		6		7		8	
	A		B		C		D		E		F					
	SYM		DATE		REVISIONS		3D		DESNR. BY		APPR. BY		APPR. BY			
	1															
	2															



Manufacture Mark



SECTION B-B
SCALE : 1:1

ASSIST C
SCALE: 1:1

⑧	FRAME	ABS	1	BLACK
⑦	TAPPING SCREW	4x12mm	2	
⑥	PCB	BAKELITE PLATE	2	
⑤	LED	SUPER FLUX LED	3	WHITE
④	REFLECTOR	ABS	1	METALIZED ALUMINUM COATED
③	HOUSING	PP	1	
②	BASE	PA6+15%MF	1	BLACK
①	LENS	PC	1	CLEAR
SYM	PART NAME	MATL&PART NUMBER	Q' TY	REMARKS

SCALE	1:1	DWG. NAME		26256CK-G		ECE APPROVED	
FILE NAME	26256CK-G-5100						
CUSTOM PART NO.		DWG. NO.		26256CK-G-5100		SYM	
		Yvonne		(ASSEMBLY-1)			
		Yvonne					
		12-24-13					
DWG. DATE							

NOTE: 1.THE LEFT SIDE AND RIGHT SIDE ARE THE SAME

2.THE BASE AND LENS ARE FIXED BY SCREW



Lucidity® LUCIDITY ENTERPRISE CO.,LTD.
No. 18, Gongye 1st Rd, Annan Dist.,
Tainan city, 70955, Taiwan

A3	1		2		3		4		5		6		7		8	
	SYM		DATE		REVISIONS		3D		DESNR. BY		APPR. BY		APPR. BY		A	
	1															
	2															

THE NETHERLANDS
(N E D E R L A N D)

COMMUNICATION

Concerning ⁽¹⁾:

- ~~approval granted~~
- approval extended
- ~~approval refused~~
- ~~approval withdrawn~~
- ~~production definitely discontinued~~

of a type of device for the illumination of rear registration plates of motor vehicles (except motor cycles) and their trailers pursuant to Regulation number 4.

Approval No.: E4-4R-00 4259

Extension No.: 01

1. Trade name or mark of the device : LUCIDITY
2. Manufacturer's name for the type of device : 26256CK-G
3. Manufacturer's name and address : LUCIDITY ENTERPRISE CO., LTD.
No.18, Gongye 1st Road, Annan District,
70955-Tainan City-Taiwan/ROC
4. If applicable, name and address of the manufacturer's representative : ---
5. Submitted for approval on : December 16, 2013
6. Technical service responsible for conducting approval tests : TÜV NORD Mobilität GmbH & Co. KG
Institut für Fahrzeugtechnik und Mobilität
Adlerstrasse 7, D-45307 Essen
7. Date of report issued by that service : December 27, 2013
8. Number of report issued by that service : TW004-B0-090101



9. Concise description ⁽²⁾ : ---
- Device for illuminating : ~~a tall plate/a wide plate/a plate for agricultural or forestry tractor~~ ⁽¹⁾
- Number and category(ies) of light source(s) : 3 x LED (12V/0.45W ; 24V/1W)
- Light source module : ~~yes/no~~ ⁽¹⁾
- Light source module specific identification code : ---
- Geometrical conditions of installation (position(s) and inclination(s) of the device in relation to the space to be occupied by the registration plate and/or different inclinations of this space) : Refer to the information folder
10. Position of the approval mark : on the lens
11. Reason(s) for extension (if applicable) : Modify the setting position between the registration plate and registration plate lamp. (Refer to the drawing)
12. Approval : ~~granted/extended/refused/withdrawn~~ ⁽¹⁾
13. Place : Zoetermeer
14. Date : 17-JAN-2014
15. Signature :


Uwe Löbig

16. The list of documents deposited with the Administrative Service which has granted approval is annexed to this communication and may be obtained upon request.

⁽¹⁾ Strike out what does not apply.

⁽²⁾ for lamps with non-replaceable source indicate the number and the total wattage of the light sources