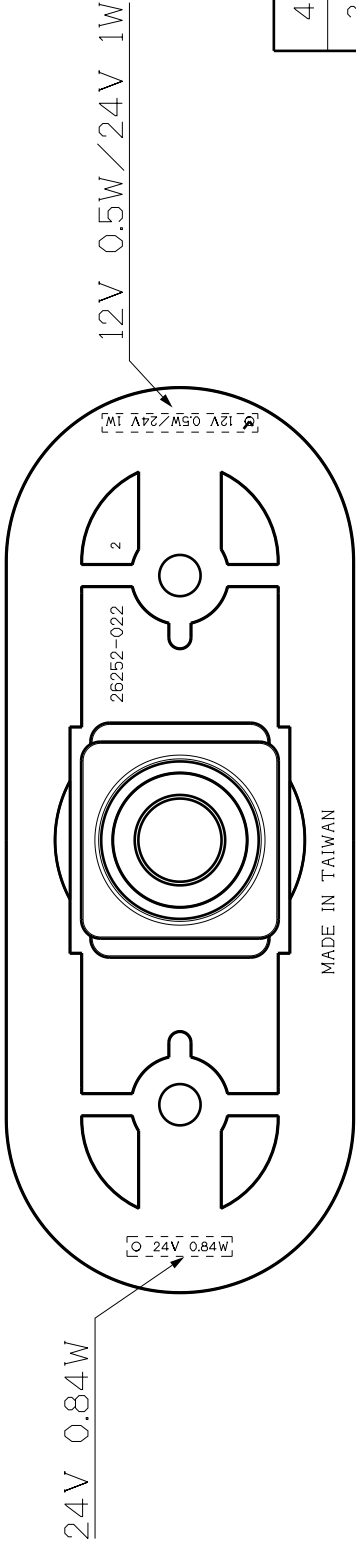
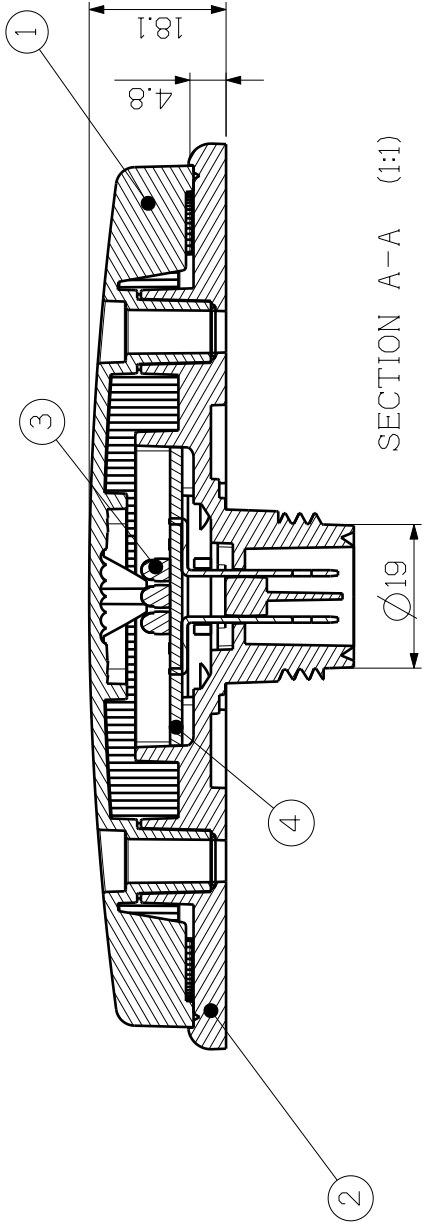
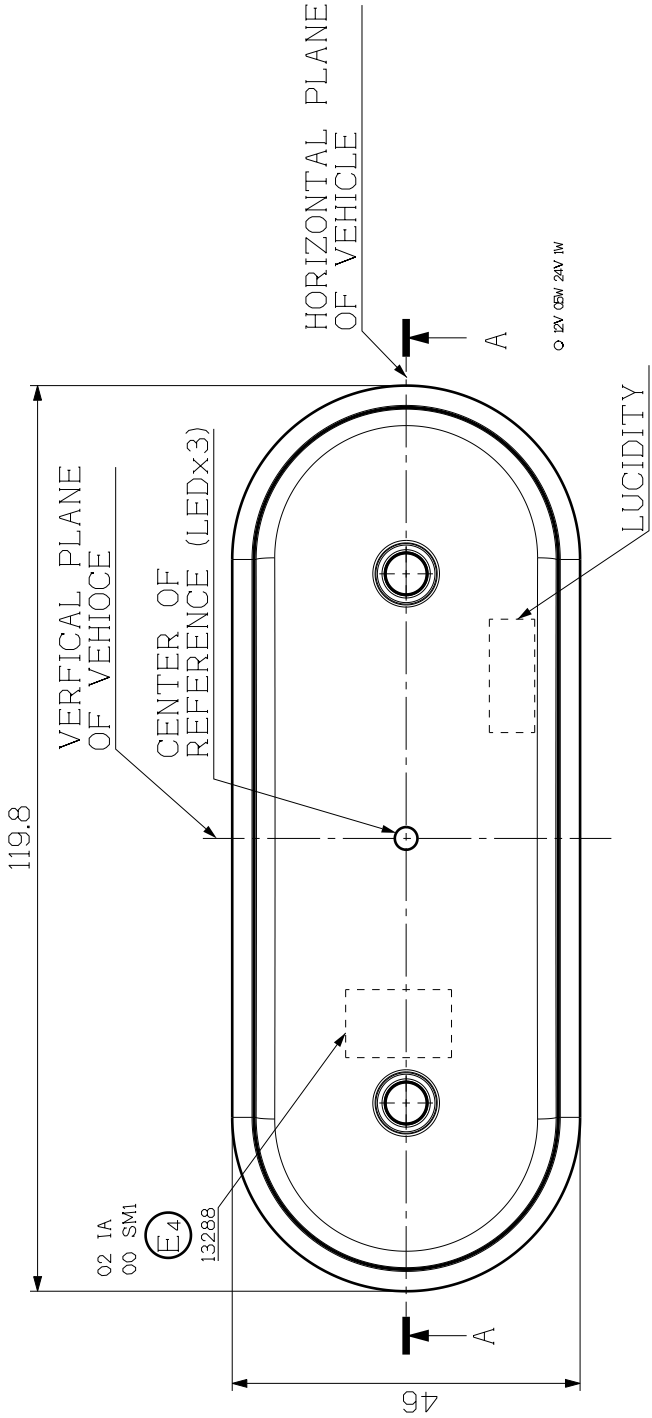


GENERAL TOLERANCE	
ASSEMBLY PARTS	
DIMENSION TOLERANCE	
≤4	±0.04
>4~≤12	±0.08
>12~≤40	±0.12
>40	±0.16
GENERAL TOLERANCES FOR NOMINAL DIMENSIONS WITHOUT SPECIFIED TOLERANCE	

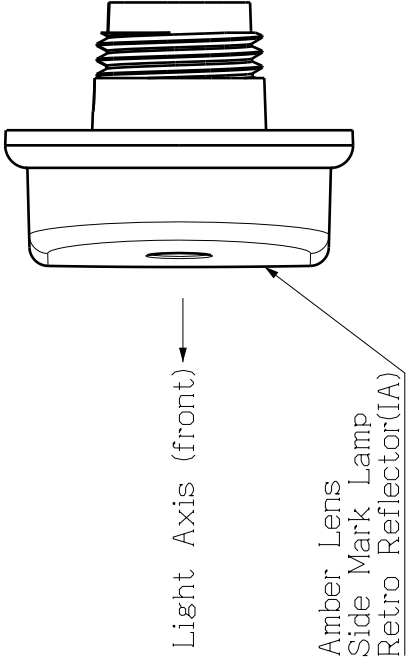


BACK VIEW (1:1)

3.The Light Sources Are Surface Mount Device LEDs

2.The Base And Lens Are Assembled By Sonic

NOTE : 1.The Left Side And Right Side Are The Same



↔ FRONT OF VEHICLE

4	PCB	BAKETITE PLATE	1	
3	LED		3	
2	BASE	ABS	1	
1	LENS	PMMA	1	AMBER
SYS	PART NAME	MATERIAL & SPECIFICATION	QTY	REMARK
SCALE	1 : 1	APPR BY		DWG NAME
FILE NAME	26252A-5500	CHK BY		
CUSTOM PART NO		DESNR BY	GRACE	DWG NO.
3RD ANGLE		DRAWN BY	GRACE	
UNIT:mm		DWG DATE	08-10-16	
			26252A	ECE APPROVED
			26252A-5500	SYM
				○
LUCIDITY® LUCIDITY ENTERPRISE CO.,LTD. NO.18, GONGYE 1ST RD., ANNIAN DIST. TAIYUAN, Taiwan, R.O.C.				

**THE NETHERLANDS**  
(N E D E R L A N D)**COMMUNICATION**

Concerning <sup>(1)</sup>:

- ~~approval granted~~
- approval extended
- ~~approval refused~~
- ~~approval withdrawn~~
- ~~production definitely discontinued~~

of a type of side-marker lamp mark SM1/~~SM2~~<sup>(1)</sup> pursuant to Regulation number 91.

**Approval number: E4-91R-00 13288**

**Extension number: 01**

- |    |  |   |
|----|--|---|
| 1. | Trade name or mark of the device                                     | : LUCIDITY  |
| 2. | Manufacturer's name for the type of side-marker lamp                 | : 26252A  |
| 3. | Manufacturer's name and address                                      | : Lucidity Enterprise Co., Ltd.<br>No.18, Gongye 1st Road, Annan District,<br>70955-Tainan City-Taiwan/ROC        |
| 4. | If applicable, name and address of the manufacturer's representative | : Not applicable  |
| 5. | Submitted for approval on  | : August 11, 2016   |
| 6. | Technical service responsible for conducting approval tests          | : TÜV NORD Mobilität GmbH & Co. KG<br>Institut für Fahrzeugtechnik und Mobilität<br>Adlerstrasse 7, D-45307 Essen |
| 7. | Date of test report  | : August 26, 2016   |
| 8. | Number of test report  | : TW091-B0-080541   |



9. Concise description <sup>(2)</sup>

- Colour of light emitted : Amber ~~red~~ <sup>(1)</sup>
- Number and category(ies) of light source(s) : 3 x LED  
Version A : 24V, 0.84W ;  
Version B : 12V ~ 24V, 0.5W / 1W
- Light source module : ~~yes~~/no <sup>(1)</sup>
- Light source module specific identification code : ---
- Only for limited mounting height equal to or less than 750 mm above the ground : ~~yes~~/no <sup>(1)</sup>
- Geometrical conditions of installation and relating variations, if any : Refer to the information folder
- Application of an electronic light source control gear/variable intensity control:
- (a) Being part of the lamp : ~~yes/no~~/not applicable <sup>(1)</sup>
- (b) Being not part of the lamp : ~~yes/no~~/not applicable <sup>(1)</sup>
- Input voltage(s) supplied by an electronic light source control gear/variable intensity control : not applicable
- Electronic light source control gear/variable intensity control manufacturer and identification number (when the light source control gear is part of the lamp but is not included into the lamp body) : not applicable
10. Position of the approval mark : On the lens
11. Reason(s) for extension (if applicable) : Add the version B : rated voltage is 12V ~ 24V (refer the information folder and drawing)
12. Approval : ~~granted~~/extended/~~refused~~/~~withdrawn~~ <sup>(1)</sup>



13. Place : Zoetermeer
14. Date : 31-AUG-2016
15. Signature :

  
Uwe Löbig



16. The list of documents deposited with the Administrative Service which has granted approval is annexed to this communication and may be obtained on request.

---

<sup>(1)</sup> Strike out what does not apply.

<sup>(2)</sup> For lamps with non-replaceable light sources indicate the number and the total wattage of the light sources.