

Index to the information package of a type approval with regard to a Regulation (UNECE) :

Last applicable Series of amendments	Base approval and update No	Extension No	Revision No	Issue date	Information document	
					Reference	Number of pages
R04-01	00	-	-	17.09.2020	LUCIDITY 26078LPLH-1 / 00	17

Approved and to be attached to the approval certificate,



R. VERHELST

Updated Approval No:	E6*04R01/00*5217*00	BEVASYS :	202001275
Update No :	00	Issue date :	17.09.2020



E6

Communication concerning :

- Approval granted <sup>(1)</sup>
- ~~Approval extended~~ <sup>(1)</sup>
- ~~Approval refused~~ <sup>(1)</sup>
- ~~Approval withdrawn~~ <sup>(1)</sup>
- ~~Production definitively discontinued~~ <sup>(1)</sup>

of a type of device for the illumination of rear registration plates of motor vehicles (except motor cycles) and their trailers, pursuant to Regulation No.04

Approval No : E6\*04R01/00\*5217\*00

Extension No : -

Approval mark :	L	IIIA	2a	R1-S1	AR	F1		L	IIIA	2a	R1-S1	AR	F1
	01	03	02	03 03	01	01		01	03	02	03 03	01	01

E6


5217  
←

Left hand

E6

5217  
→

Right hand

- |    |  |   |
|----|--|---|
| 1. | Trade name or mark of device :   |                             |
| 2. | Manufacturer's name for the type of device :                           | 26078LPLH-1, 26078LPRH-1  |
| 3. | Manufacturer's name and address :                                      | Lucidity Enterprise Co., Ltd<br>No. 18, Gong-Ye 1st Road, Annan District,<br>70955 Tainan City, Taiwan / R.O.C. |
| 4. | If applicable, name and address of the manufacturer's representative : | -   |
| 5. | Submitted for approval on :  | 24.08.2020 ~ 28.08.2020   |
| 6. | Technical Service responsible for conducting approval test:            | Vincotte N.V.<br>Jan Olieslagerslaan 35<br>1800 Vilvoorde<br>Belgium  |
| 7. | Date of test report issued by that service :                           | 17.09.2020  |
| 8. | Number of test report issued by that service :                         | H2060863653/121   |

9. Concise description : See information document
- Device for illuminating : Category ~~1a~~, 1b, ~~1c~~, ~~2a~~, ~~2b~~ <sup>(1)</sup>
- Number and category(ies) of light source(s) : 4LEDs / 4 light sources  
12V, 1.5W
- Light source module : ~~Yes~~ / No <sup>(1)</sup>
- Light source module specific identification code : -
- Geometrical conditions of installation (position(s) and inclination(s) of the device in relation to the space to be occupied by the registration plate and/or different inclinations of this space) : See information document
10. Position of approval mark : On the lamp
11. Reason(s) for extension (if applicable) : Not applicable
12. Approval granted / ~~extended~~ / ~~refused~~ / ~~withdrawn~~ <sup>(1)</sup>
13. Place : Brussels
14. Date : 17.09.2020
15. Signature :

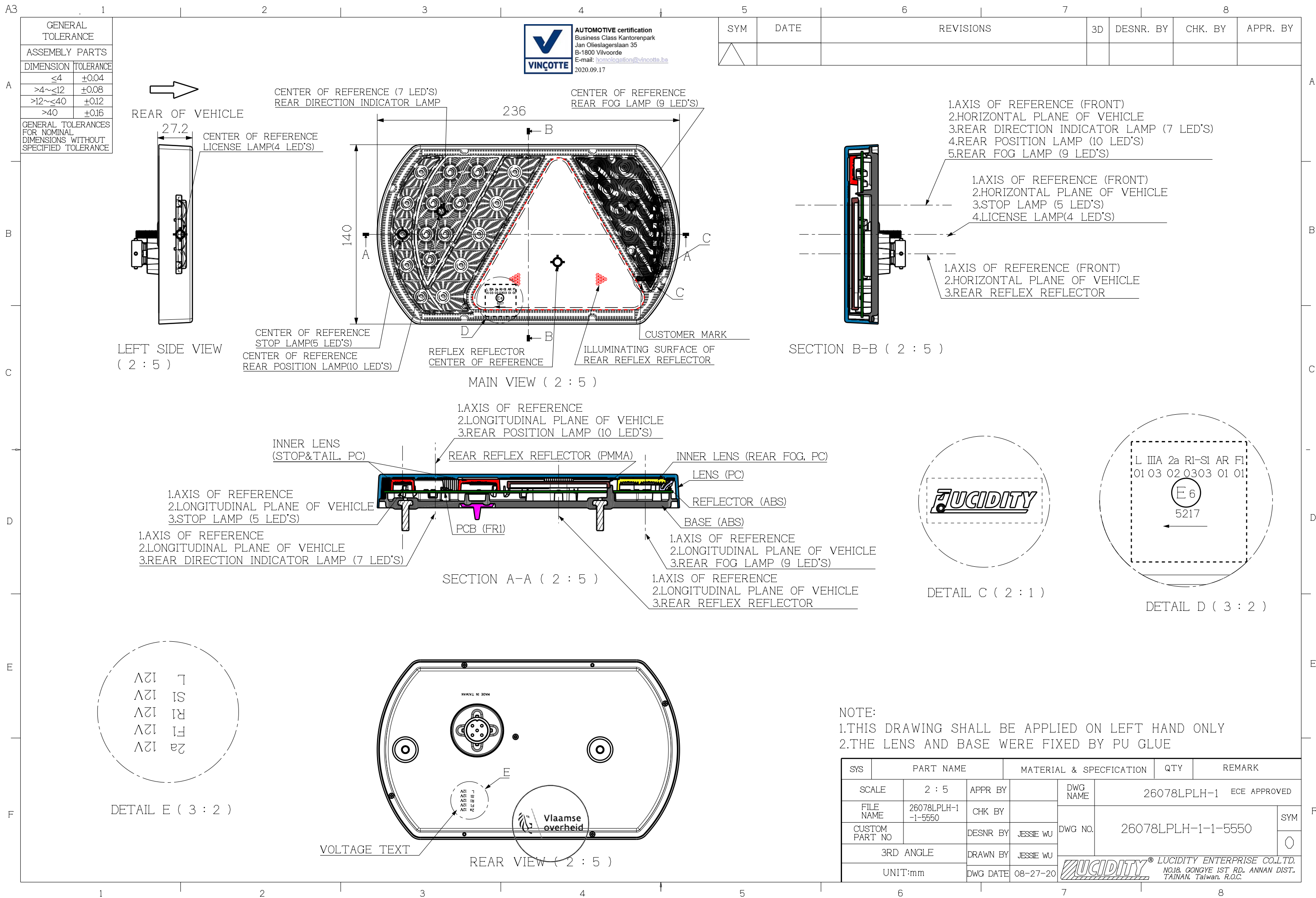
ON BEHALF OF THE SECRETARY-GENERAL:



R. VERHELST

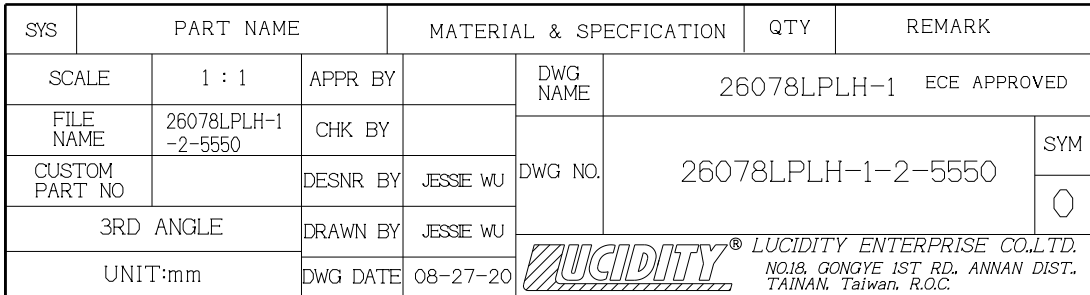
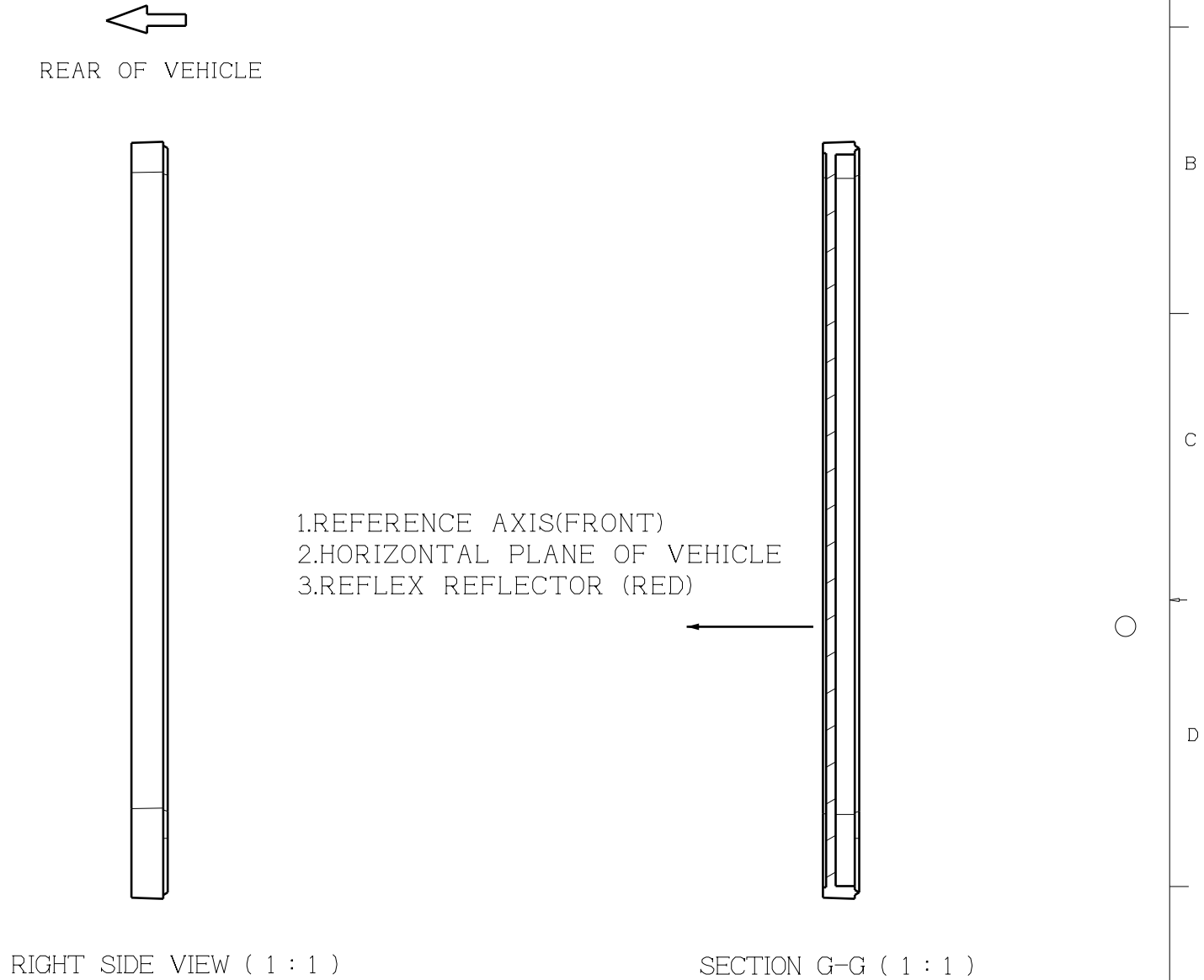
16. The list of documents deposited with the Type Approval Authority which has granted approval is annexed to this communication and may be obtained on request.

(1) *Strike out what does not apply.*





**AUTOMOTIVE certification**  
 Business Class Kantorenpark  
 Jan Olieslagerslaan 35  
 B-1800 Vilvoorde  
 E-mail: [homologation@vincotte.be](mailto:homologation@vincotte.be)  
 2020.09.17



A3

A

B

C

D

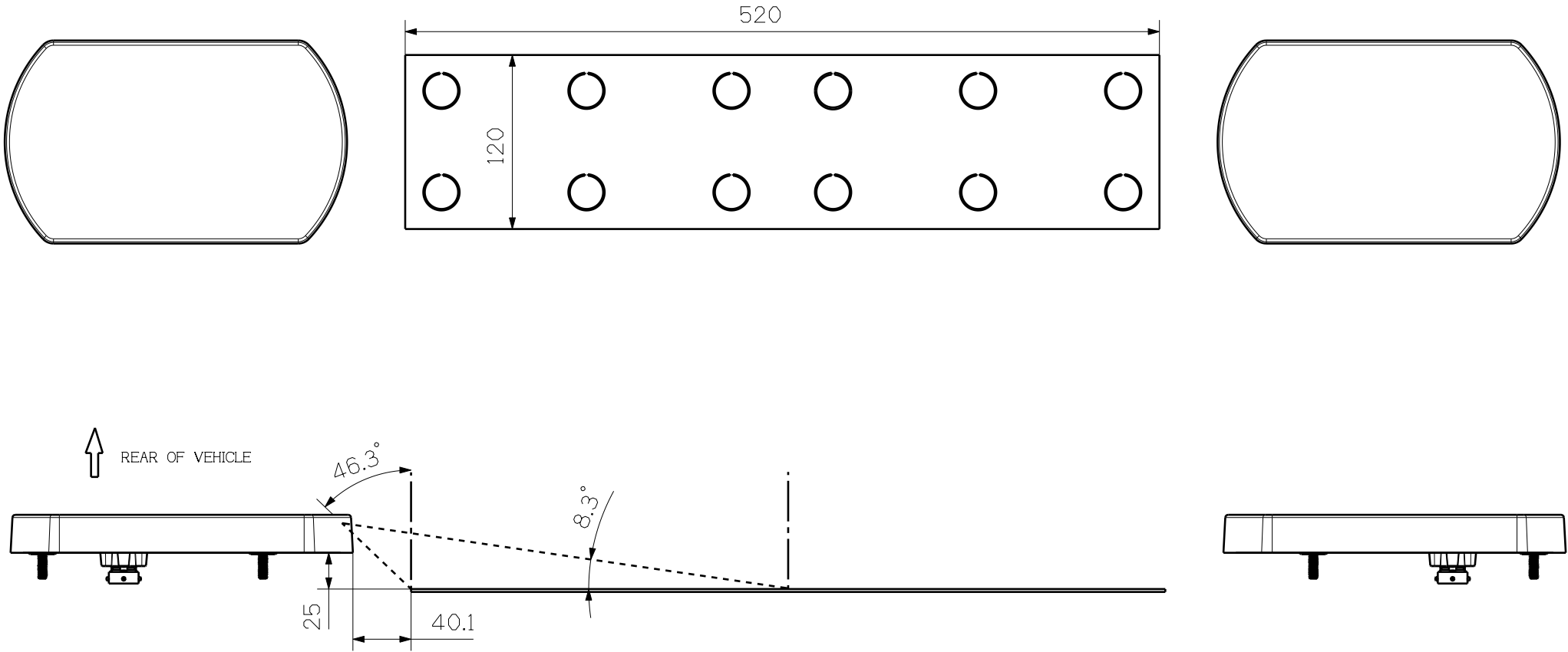
E

F


GENERAL TOLERANCE	
ASSEMBLY PARTS	
DIMENSION	TOLERANCE
≤4	±0.04
>4~≤12	±0.08
>12~≤40	±0.12
>40	±0.16
GENERAL TOLERANCES FOR NOMINAL DIMENSIONS WITHOUT SPECIFIED TOLERANCE	



SYM	DATE	REVISIONS	3D	DESNR. BY	CHK. BY	APPR. BY
△						



NOTE:  
1.THE DRAWING SHOW THE POSITION OF LICENSE PLATE  
2.DEVICES FOR ILLUMINATING A TALL PLATE(520x120)  
3.ANGLE OF THE INCIDENCE OF THE LIGHT = 81.7°

SYS	PART NAME		MATERIAL & SPECIFICATION		QTY	REMARK	
SCALE	1 : 4	APPR BY		DWG NAME	26078LPLH-1 ECE APPROVED		
FILE NAME	26078LPLH-1-4-5550	CHK BY		DWG NO.	26078LPLH-1-4-5550		SYM
CUSTOM PART NO		DESNR BY	JESSIE WU				O
3RD ANGLE		DRAWN BY	JESSIE WU				
UNIT:mm		DWG DATE	08-27-20	 LUCIDITY ENTERPRISE CO.,LTD. NO.18, GONGYE 1ST RD. ANNAN DIST. TAINAN, Taiwan, R.O.C.			

A

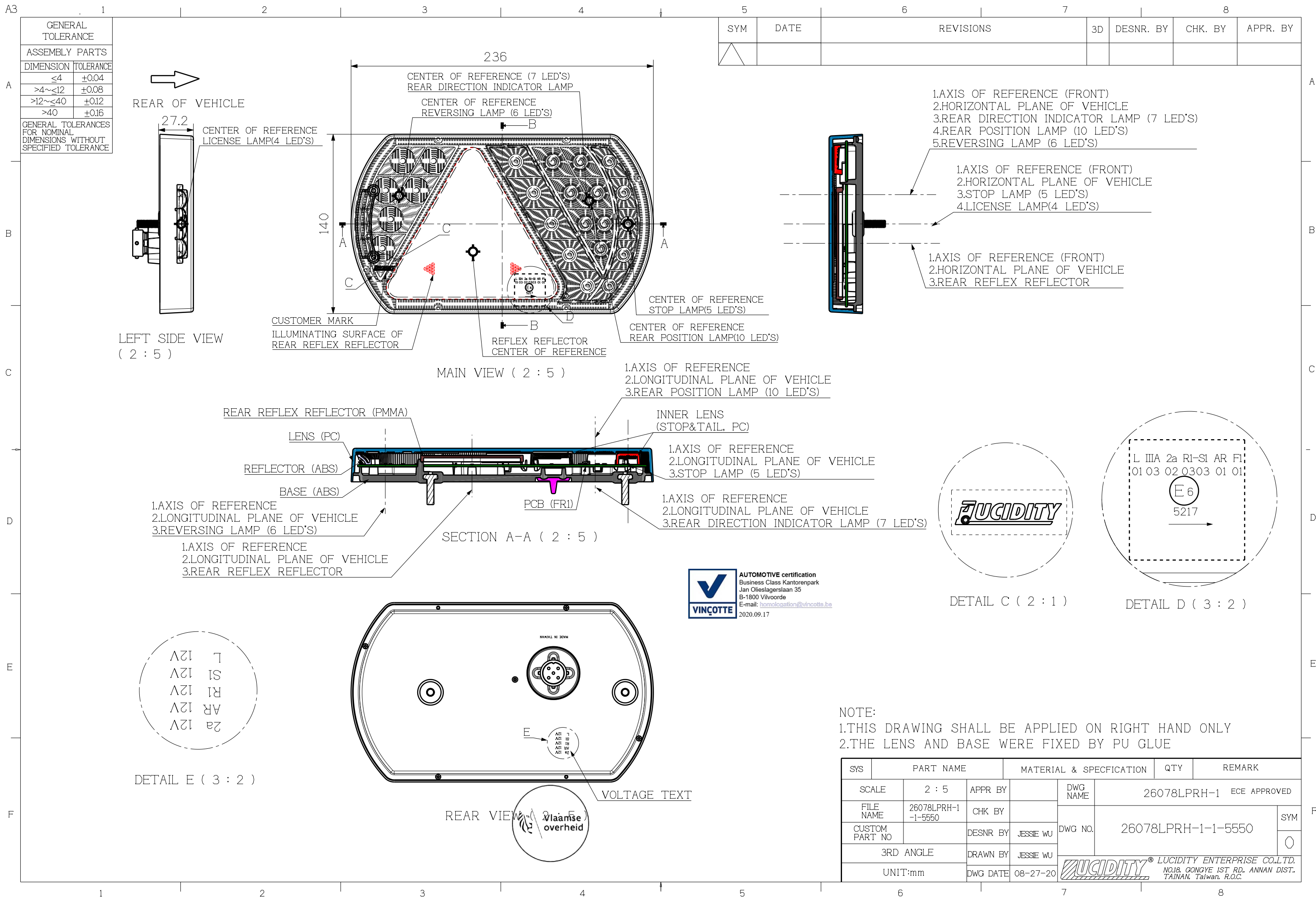
B

C

D

E

F










SYM	DATE	REVISIONS	3D	DESNR. BY	CHK. BY	APPR. BY
△						



- 1.THE DRAWING SHOW THE POSITION OF LICENSE PLATE
- 2.DEVICES FOR ILLUMINATING A TALL PLATE(520x120)
- 3.ANGLE OF THE INCIDENCE OF THE LIGHT =  $81.7^\circ$

SYS	PART NAME		MATERIAL & SPECIFICATION		QTY	REMARK	
SCALE	1 : 4	APPR BY		DWG NAME	26078LPRH-1 ECE APPROVED		
FILE NAME	26078LPRH-1-4-5550	CHK BY		DWG NO.	26078LPRH-1-4-5550		SYM ○
CUSTOM PART NO		DESNR BY	JESSIE WU				
3RD ANGLE		DRAWN BY	JESSIE WU				
UNIT:mm		DWG DATE	08-27-20	 <b>LUCIDITY®</b> LUCIDITY ENTERPRISE CO.,LTD. NO.18, GONGYE 1ST RD., ANNAN DIST., TAINAN, Taiwan, R.O.C.			

**AUTOMOTIVE certification**  
Business Class Kantorenpark  
Jan Olieslagerslaan 35  
B-1800 Vilvoorde  
E-mail: [homologation@vincotte.be](mailto:homologation@vincotte.be)  
2020.09.17



**LUCIDITY**<sup>®</sup> LUCIDITY ENTERPRISE CO.,LTD.  
NO.18, GONGYE 1ST RD., ANNAN DIST.,  
TAINAN, Taiwan, R.O.C.

A3

A

B

C

D

E

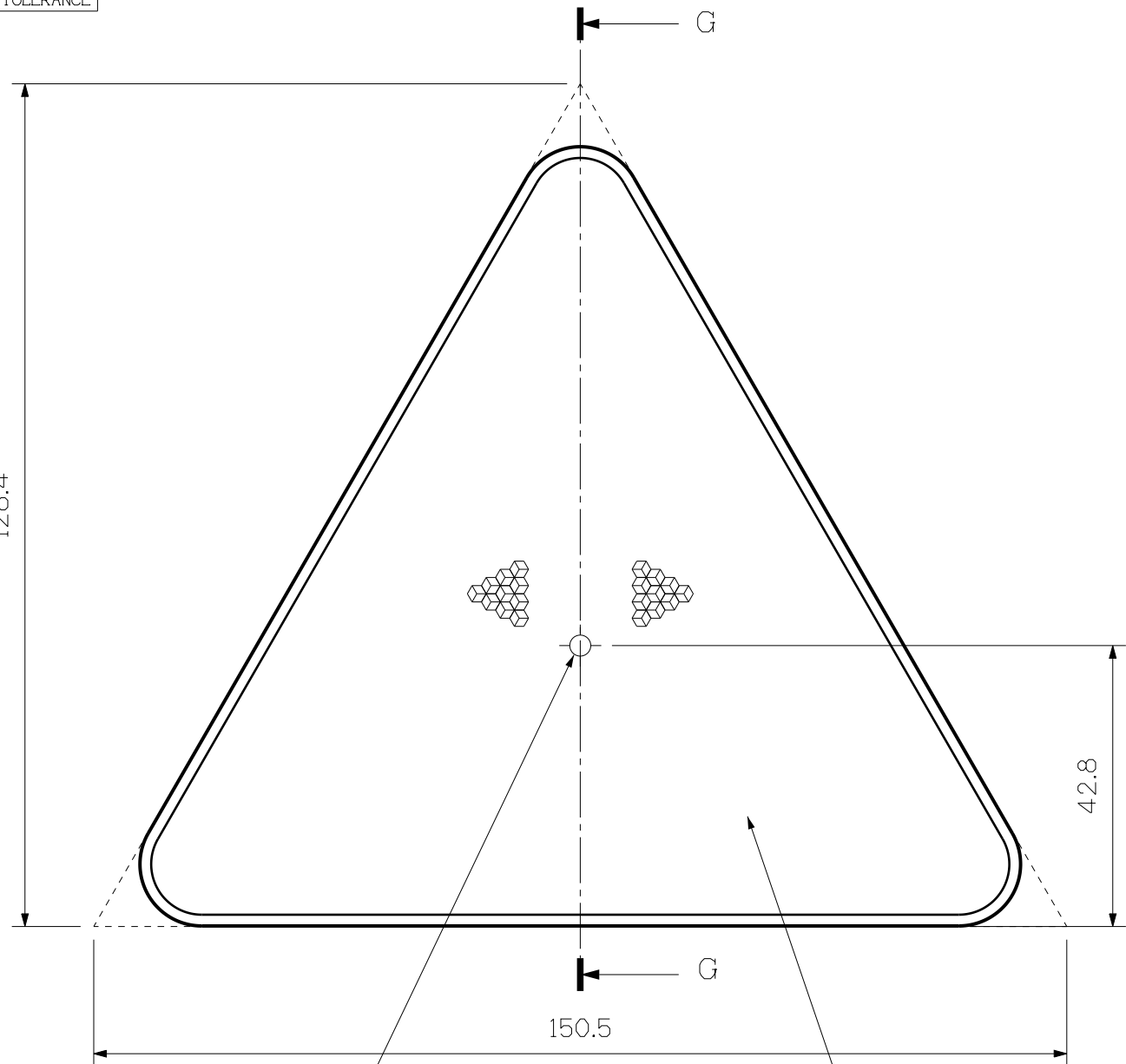
F

GENERAL TOLERANCE	
ASSEMBLY PARTS	
DIMENSION	TOLERANCE
≤4	±0.04
>4~≤12	±0.08
>12~≤40	±0.12
>40	±0.16
GENERAL TOLERANCES FOR NOMINAL DIMENSIONS WITHOUT SPECIFIED TOLERANCE	



**AUTOMOTIVE certification**  
Business Class Kantorenpark  
Jan Olieslagerslaan 35  
B-1800 Vilvoorde  
E-mail: [homologation@vincotte.be](mailto:homologation@vincotte.be)  
2020.09.17

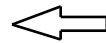
SYM	DATE	REVISIONS	3D	DESNR. BY	CHK. BY	APPR. BY
△						



MAIN VIEW

REFLEX REFLECTOR  
CENTER OF REFERENCE

ILLUMINATING SURFACE OF  
REAR REFLEX REFLECTOR  
AREA : 8,535mm<sup>2</sup>



REAR OF VEHICLE




RIGHT SIDE VIEW ( 1 : 1 )



SECTION G-G ( 1 : 1 )

- 1.REFERENCE AXIS(FRONT)
- 2.HORIZONTAL PLANE OF VEHICLE
- 3.REFLEX REFLECTOR (RED)



SYS	PART NAME		MATERIAL & SPECIFICATION		QTY	REMARK	
	SCALE	1 : 1	APPR BY		DWG NAME	26078PLH-1 ECE APPROVED	
	FILE NAME	26078PLH-1-2-5550	CHK BY		DWG NO.	26078PLH-1-2-5550	
	CUSTOM PART NO		DESNR BY	JESSIE WU			
	3RD ANGLE		DRAWN BY	JESSIE WU		LUCIDITY ENTERPRISE CO.,LTD. NO.18, GONGYE 1ST RD., ANNAN DIST., TAINAN, Taiwan, R.O.C.	
	UNIT:mm		DWG DATE	08-31-20			



