

Index to the information package of a type approval with regard to a Regulation (UNECE) :

Last applicable Series of amendments	Base approval and update No	Extension No	Revision No	Issue date	Information document	
					Reference	Number of pages
R06-02	00	-	-	17.09.2020	LUCIDITY 26078LPLH-1 / 00	17

Approved and to be attached to the approval certificate,

R. VERHELST

Updated Approval No:	E6*06R02/00*5217*00	BEVASYS :	202001276
Update No :	00	Issue date :	17.09.2020



E6

Communication concerning :

- Approval granted <sup>(1)</sup>
- ~~Approval extended~~ <sup>(1)</sup>
- ~~Approval refused~~ <sup>(1)</sup>
- ~~Approval withdrawn~~ <sup>(1)</sup>
- ~~Production definitively discontinued~~ <sup>(1)</sup>

of a type of direction indicator, pursuant to Regulation No.06

Approval No : E6\*06R02/00\*5217\*00

Extension No : -

Approval mark :	L	IIIA	2a	R1-S1	AR	F1		L	IIIA	2a	R1-S1	AR	F1
	01	03	02	03 03	01	01		01	03	02	03 03	01	01

E6

5217



Left hand

E6

5217



Right hand

1. Trade name or mark of device :



2. Manufacturer's name for the type of device :

26078PLH-1, 26078PRH-1  
26078LPLH-1, 26078LPRH-1

3. Manufacturer's name and address :

Lucidity Enterprise Co., Ltd  
No. 18, Gong-Ye 1st Road, Annan District,  
70955 Tainan City, Taiwan / R.O.C.

4. If applicable, name and address of the manufacturer's representative :

-

5. Submitted for approval on :

22.08.2020 ~ 28.08.2020

6. Technical Service responsible for conducting approval test :

Vincotte N.V.  
Jan Olieslagerslaan 35  
1800 Vilvoorde  
Belgium

7. Date of test report issued by that service :

17.09.2020

8. Number of test report issued by that service :

H2060863653/122

9.	Concise description :	See information document
	Category :	<del>1, 1a, 1b</del> , 2a, <del>2b, 5, 6</del> <sup>(1)</sup>
	Number, category :	7 LEDs / 7 light sources
	Function(s) produced by an interdependent lamp forming part of an interdependent lamps system :	Not applicable
	Voltage and wattage :	12V, 1.7W
	Light source module specific identification code :	Not applicable
	Only for limited mounting height of equal to or less than 750mm above the ground :	<del>Yes</del> / No <sup>(1)</sup>
	Geometrical conditions of installation and relating variations, if any :	See information document
	Application of an electronic light source control gear / variable intensity control :	
	(a) Being part of the lamp :	<del>Yes</del> / No <sup>(1)</sup>
	(b) Being not part of the lamp :	<del>Yes</del> / No <sup>(1)</sup>
	Input voltage(s) supplied by an electronic light source control gear / variable intensity control :	Not applicable
	Electronic light source control gear / variable intensity control manufacturer and identification number (when the light source control gear is part of the lamp but is not included into the lamp body) :	Not applicable
	Variable luminous intensity :	<del>Yes</del> / No <sup>(1)</sup>
	Sequential activation of light sources (see paragraph 5.6 of this Regulation) :	<del>Yes</del> / No <sup>(1)</sup>
10.	Position of approval mark :	On the lamp
11.	Reason(s) for extension (if applicable) :	Not applicable
12.	Approval granted / <del>extended</del> / <del>refused</del> / <del>withdrawn</del> <sup>(1)</sup>	

13. Place : Brussels
14. Date : 17.09.2020
15. Signature :

ON BEHALF OF THE SECRETARY-GENERAL:

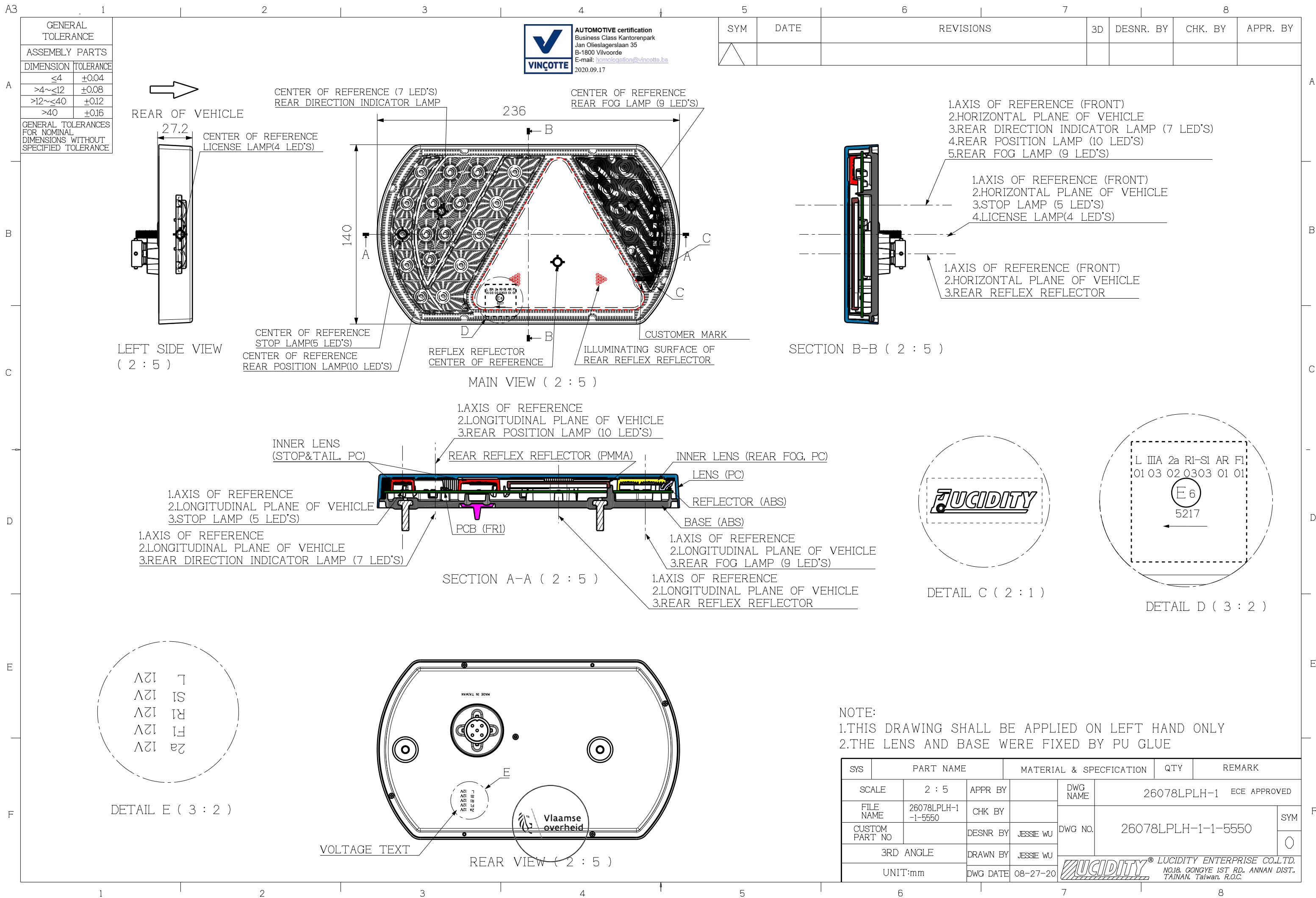


A handwritten signature in blue ink, reading 'R. Verhelst'.

R. VERHELST

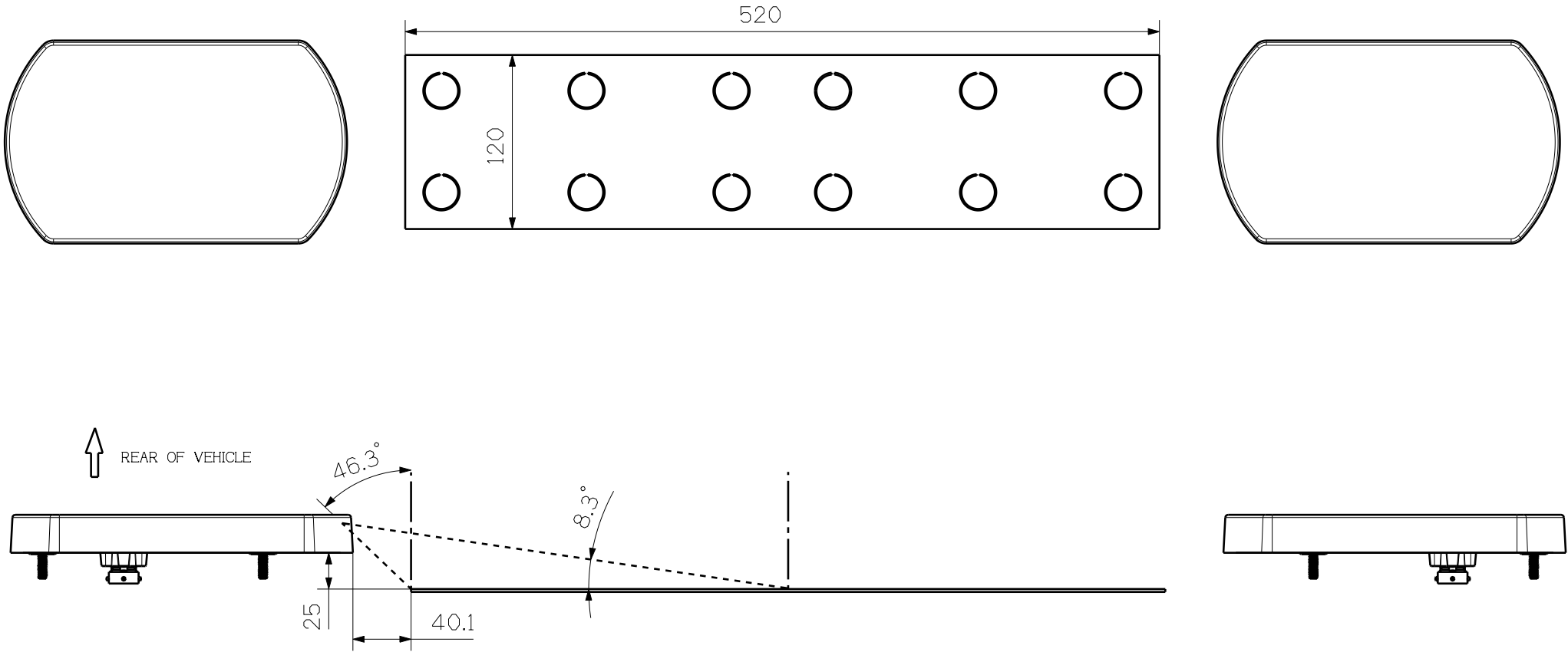
16. The list of documents deposited with the Administrative Service which has granted approval is annexed to this communication and may be obtained on request.

(1) *Delete where not applicable*



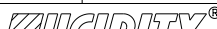
F

SYM	DATE	REVISIONS	3D	DESNR. BY	CHK. BY	APPR. BY



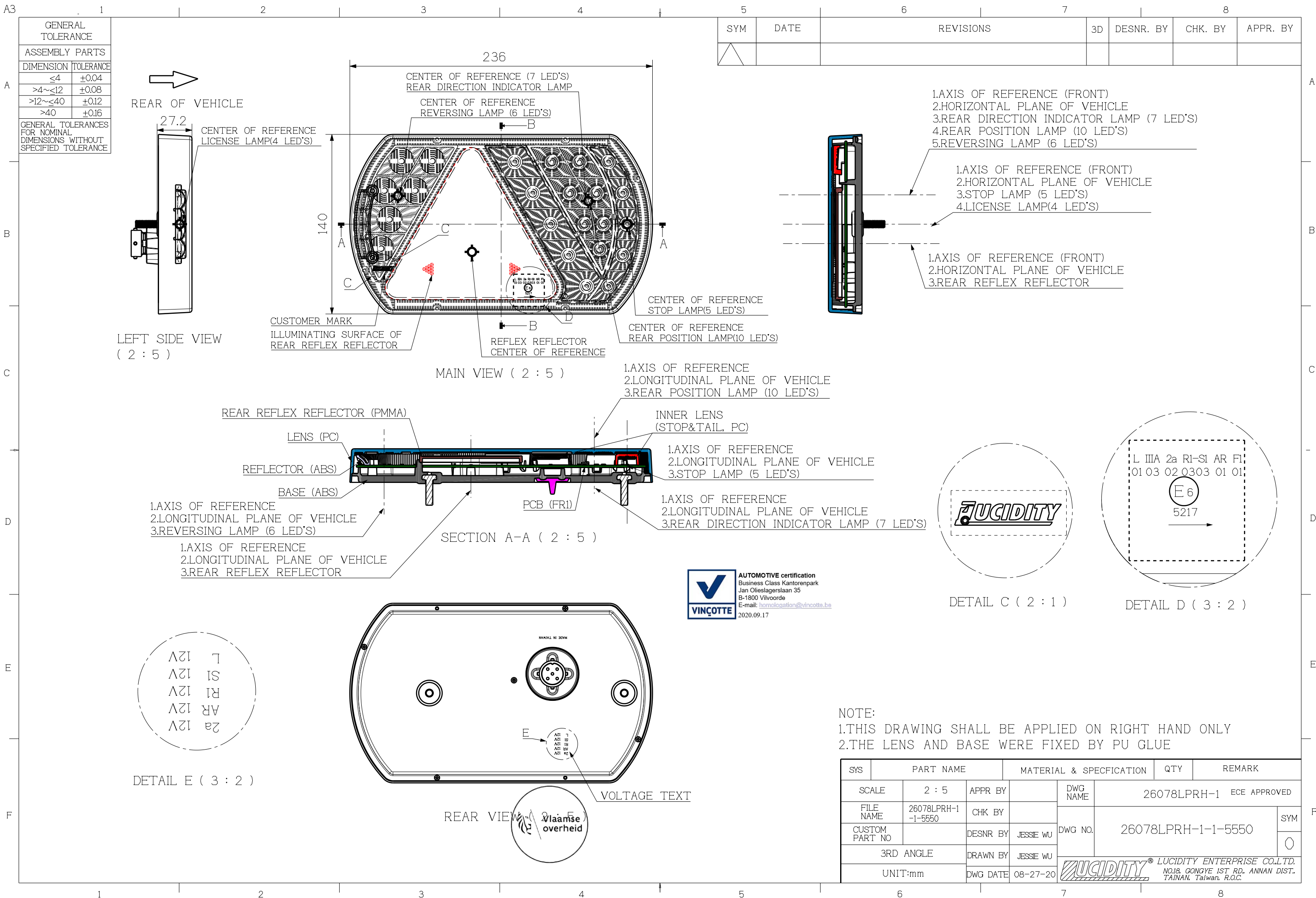
NOTE:

- 1.THE DRAWING SHOW THE POSITION OF LICENSE PLATE
- 2.DEVICES FOR ILLUMINATING A TALL PLATE(520x120)
- 3.ANGLE OF THE INCIDENCE OF THE LIGHT =  $81.7^\circ$

SYS	PART NAME		MATERIAL & SPECIFICATION		QTY	REMARK	
SCALE	1 : 4	APPR BY		DWG NAME	26078LPLH-1 ECE APPROVED		
FILE NAME	26078LPLH-1-4-5550	CHK BY		DWG NO.	26078LPLH-1-4-5550		SYM 0
CUSTOM PART NO		DESNR BY	JESSIE WU				
3RD ANGLE		DRAWN BY	JESSIE WU				
UNIT:mm		DWG DATE	08-27-20	 <b>LUCIDITY ENTERPRISE CO.,LTD.</b> NO.18, GONGYE 1ST RD., ANNAN DIST. TAINAN, Taiwan, R.O.C.			









REAR OF VEHICLE

1.REFERENCE AXIS(FRONT)  
2.HORIZONTAL PLANE OF VEHICLE  
3.REFLEX REFLECTOR (RED)

RIGHT SIDE VIEW ( 1 : 1 )

SECTION G-G ( 1 : 1 )

A number line is shown with tick marks at 6, 7, and 8. A shaded region is located between 7 and 8, with a bracket above it labeled  $\frac{1}{4}$ .

[illegible]

A3

A

B

C

D

E

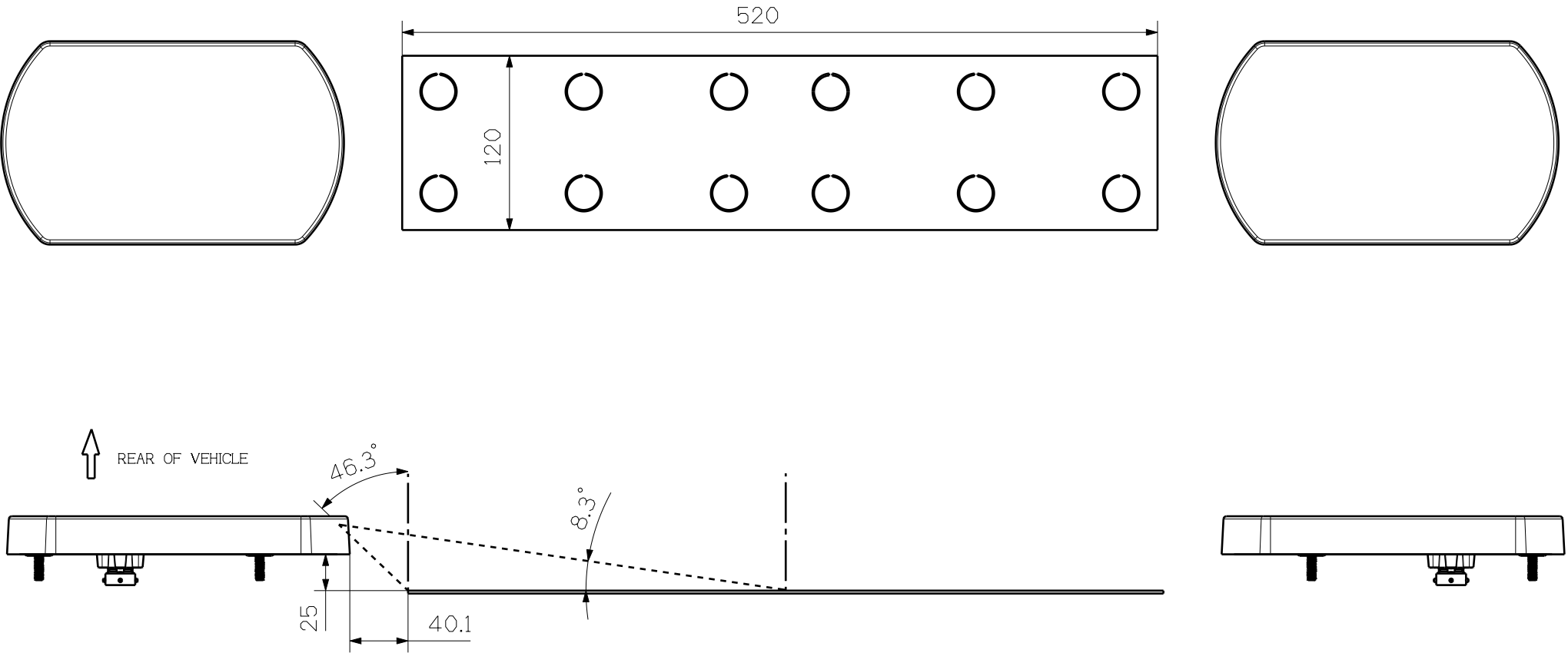
F

GENERAL TOLERANCE	
ASSEMBLY PARTS	
DIMENSION	TOLERANCE
≤4	±0.04
>4~≤12	±0.08
>12~≤40	±0.12
>40	±0.16
GENERAL TOLERANCES FOR NOMINAL DIMENSIONS WITHOUT SPECIFIED TOLERANCE	




**AUTOMOTIVE certification**  
Business Class Kantorenpark  
Jan Olieslagerslaan 35  
B-1800 Vilvoorde  
E-mail: [vincologation@vincotte.be](mailto:vincologation@vincotte.be)  
2020.09.17

SYM	DATE	REVISIONS	3D	DESNR. BY	CHK. BY	APPR. BY



NOTE:  
1.THE DRAWING SHOW THE POSITION OF LICENSE PLATE  
2.DEVICES FOR ILLUMINATING A TALL PLATE(520x120)  
3.ANGLE OF THE INCIDENCE OF THE LIGHT = 81.7°

SYS	PART NAME		MATERIAL & SPECIFICATION		QTY	REMARK	
SCALE	1 : 4	APPR BY		DWG NAME	26078LPRH-1 ECE APPROVED		
FILE NAME	26078LPRH-1-4-5550	CHK BY		DWG NO.	26078LPRH-1-4-5550		SYM
CUSTOM PART NO		DESNR BY	JESSIE WU				O
3RD ANGLE		DRAWN BY	JESSIE WU				
UNIT:mm		DWG DATE	08-27-20	 LUCIDITY ENTERPRISE CO.,LTD. NO.18, GONGYE 1ST RD. ANNAN DIST. TAINAN, Taiwan, R.O.C.			

A3

A

B

C

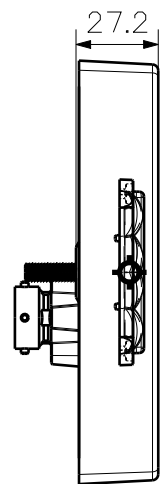
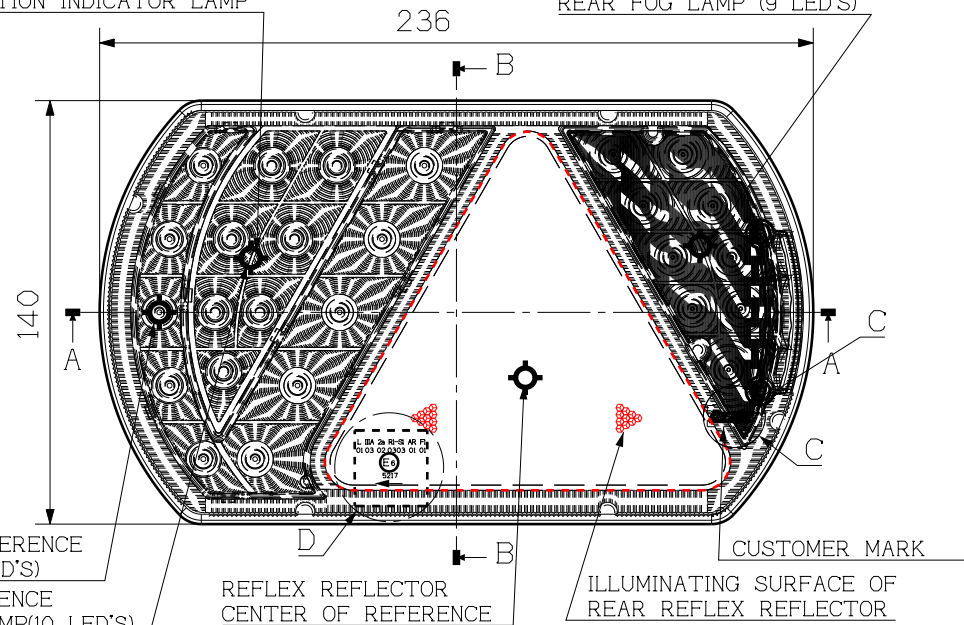
D

E

F

GENERAL TOLERANCE	
ASSEMBLY PARTS	
DIMENSION	TOLERANCE
≤4	±0.04
>4~≤12	±0.08
>12~≤40	±0.12
>40	±0.16
GENERAL TOLERANCES FOR NOMINAL DIMENSIONS WITHOUT SPECIFIED TOLERANCE	

REAR OF VEHICLE

LEFT SIDE VIEW  
( 2 : 5 )CENTER OF REFERENCE (7 LED'S)  
REAR DIRECTION INDICATOR LAMPCENTER OF REFERENCE  
REAR FOG LAMP (9 LED'S)

MAIN VIEW ( 2 : 5 )

CENTER OF REFERENCE  
STOP LAMP(6 LED'S)  
CENTER OF REFERENCE  
REAR POSITION LAMP(10 LED'S)REFLEX REFLECTOR  
CENTER OF REFERENCEILLUMINATING SURFACE OF  
REAR REFLEX REFLECTOR

CUSTOMER MARK

1.AXIS OF REFERENCE  
2.LONGITUDINAL PLANE OF VEHICLE  
3.REAR POSITION LAMP (10 LED'S)INNER LENS  
(STOP&TAIL, PC)

REAR REFLEX REFLECTOR (PMMA)

INNER LENS (REAR FOG, PC)

LENS (PC)

REFLECTOR (ABS)

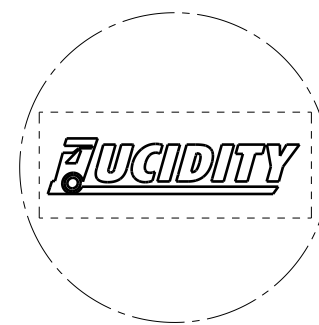
BASE (ABS)

1.AXIS OF REFERENCE  
2.LONGITUDINAL PLANE OF VEHICLE  
3.STOP LAMP (5 LED'S)1.AXIS OF REFERENCE  
2.LONGITUDINAL PLANE OF VEHICLE  
3.REAR DIRECTION INDICATOR LAMP (7 LED'S)

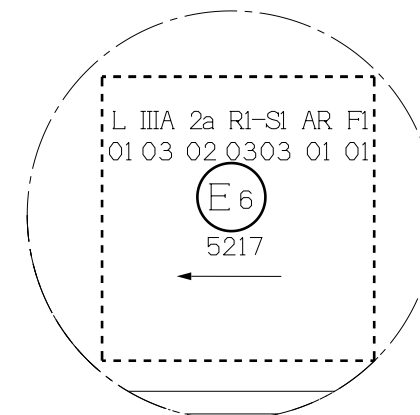
SECTION A-A ( 2 : 5 )

1.AXIS OF REFERENCE  
2.LONGITUDINAL PLANE OF VEHICLE  
3.REAR REFLEX REFLECTOR

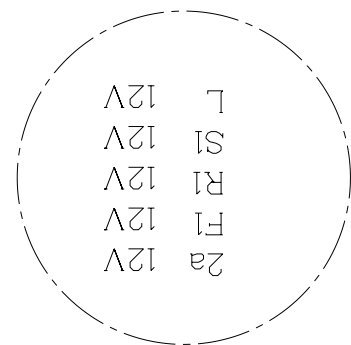
SECTION B-B ( 2 : 5 )

1.AXIS OF REFERENCE (FRONT)  
2.HORIZONTAL PLANE OF VEHICLE  
3.REAR DIRECTION INDICATOR LAMP (7 LED'S)  
4.REAR POSITION LAMP (10 LED'S)  
5.REAR FOG LAMP (9 LED'S)1.AXIS OF REFERENCE (FRONT)  
2.HORIZONTAL PLANE OF VEHICLE  
3.STOP LAMP (5 LED'S)1.AXIS OF REFERENCE (FRONT)  
2.HORIZONTAL PLANE OF VEHICLE  
3.REAR REFLEX REFLECTOR

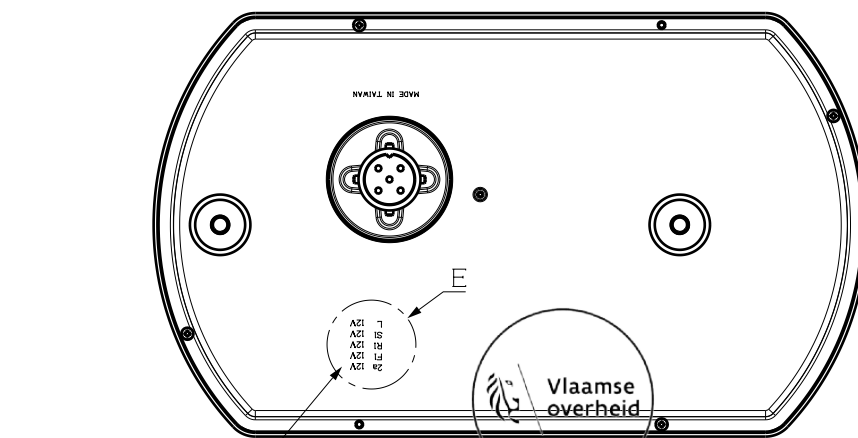
DETAIL C ( 2 : 1 )



DETAIL D ( 3 : 2 )



DETAIL E ( 3 : 2 )



VOLTAGE TEXT

REAR VIEW ( 2 : 5 )

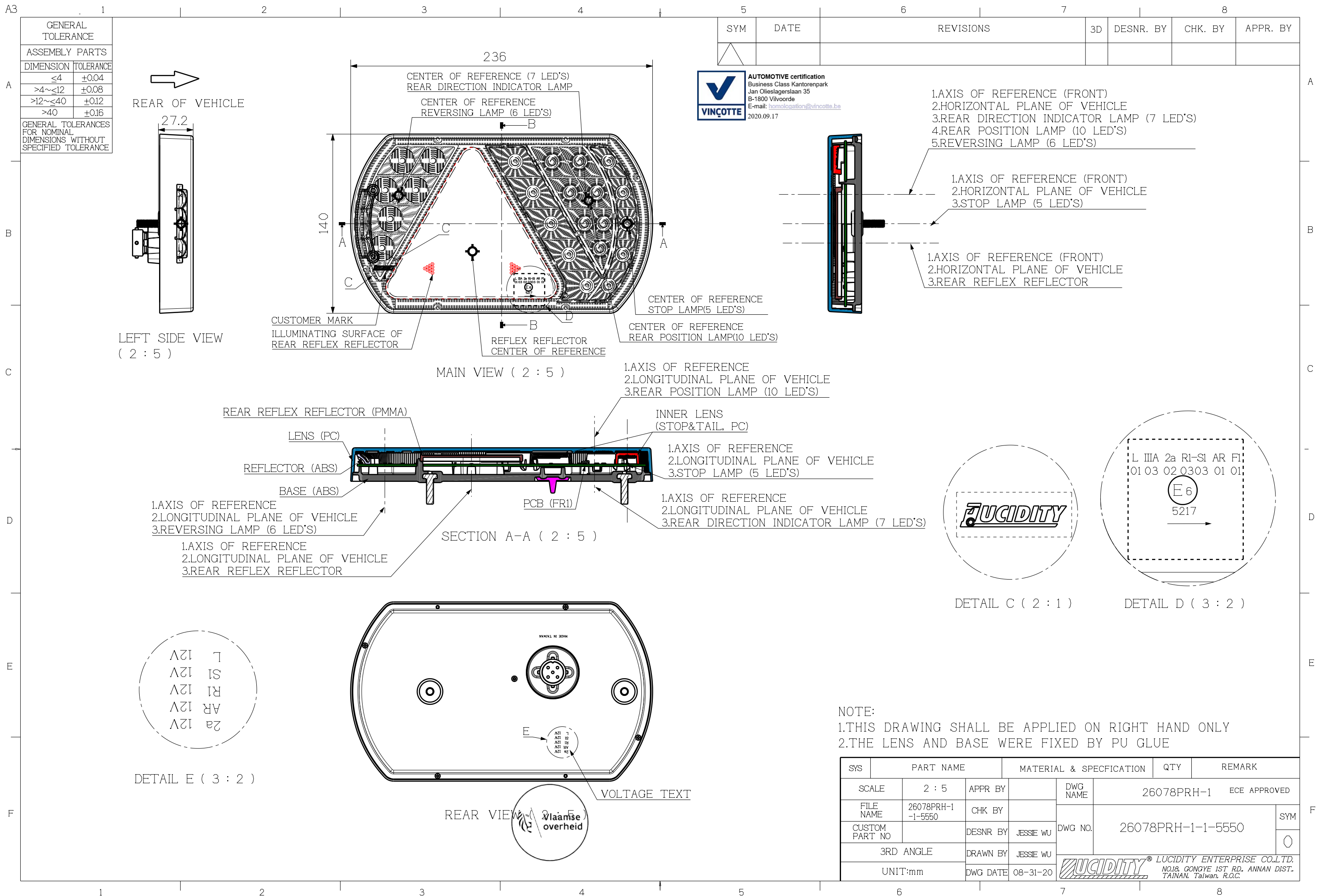
AUTOMOTIVE certification  
Business Class Kantorenpark  
Jan Olieslagerslaan 35  
B-1800 Vilvoorde  
E-mail: [homologation@vincotte.be](mailto:homologation@vincotte.be)  
2020.09.17

## NOTE:

- 1.THIS DRAWING SHALL BE APPLIED ON LEFT HAND ONLY
- 2.THE LENS AND BASE WERE FIXED BY PU GLUE

SYS	PART NAME	MATERIAL & SPECIFICATION	QTY	REMARK
SCALE	2 : 5	APPR BY	DWG NAME	26078PLH-1 ECE APPROVED
FILE NAME	26078PLH-1-1-5550	CHK BY	DWG NO.	26078PLH-1-1-5550
CUSTOM PART NO		DESNR BY JESSIE WU		
3RD ANGLE		DRAWN BY JESSIE WU		
UNIT:mm		DWG DATE 08-31-20		
LUCIDITY® LUCIDITY ENTERPRISE CO.,LTD. NO.18, GONGYE 1ST RD., ANNAN DIST. TAINAN, Taiwan, R.O.C.				





**LUCIDITY**<sup>®</sup> LUCIDITY ENTERPRISE CO., LTD.  
NO.18, GONGYE 1ST RD., ANNAN DIST.,  
TAINAN, Taiwan, R.O.C.