

Index to the information package of a type approval with regard to a Regulation (UNECE) :

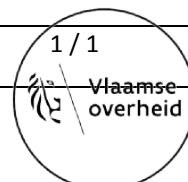
Last applicable Series of amendments	Base approval and update No	Extension No	Revision No	Issue date	Information document	
					Reference	Number of pages
R38-01	00	-	-	17.09.2020	LUCIDITY 26078LPLH-1 / 00	17

Approved and to be attached to the approval certificate,



R. VERHELST

Updated Approval No: E6*38R01/00*5217*00		BEVASYS : 202001279
Update No : 00	Issue date : 17.09.2020	1 / 1



E6

Communication concerning :

- Approval granted ⁽¹⁾
- ~~Approval extended~~ ⁽¹⁾
- ~~Approval refused~~ ⁽¹⁾
- ~~Approval withdrawn~~ ⁽¹⁾
- ~~Production definitively discontinued~~ ⁽¹⁾

of a type of rear fog lamp for power-driven vehicles and their trailers, pursuant to Regulation No.38

Approval No : E6*38R01/00*5217*00

Extension No : -

Approval mark :	L	IIIA	2a	R1-S1	AR	F1	L	IIIA	2a	R1-S1	AR	F1
	01	03	02	03 03	01	01	01	03	02	03 03	01	01

E6

5217



Left hand

E6

5217



Right hand

1. Trade name or mark of the device :



2. Manufacturer's name for the type of device :

26078PLH-1, 26078PRH-1
26078LPLH-1, 26078LPRH-1

3. Manufacturer's name and address :

Lucidity Enterprise Co., Ltd
No. 18, Gong-Ye 1st Road, Annan District,
70955 Tainan City, Taiwan / R.O.C.

4. If applicable, name and address of the manufacturer's representative : -

5. Submitted for approval on :

22.08.2020 ~ 28.08.2020

6. Technical Service responsible for conducting approval test:

Vincotte N.V.
Jan Olieslagerslaan 35
1800 Vilvoorde
Belgium

7. Date of test report issued by that service :

17.09.2020

8. Number of test report issued by that service:

H2060863653/125

9. Concise description: See information document
- Number, category and kind of light source(s) : 9 LEDs / 9 light sources
- Voltage and wattage : 12V, 5.5W
- Light source module specific identification code : Not applicable
- Geometrical conditions of installation and relating variations, if any : See information document
- Application of an electronic light source control gear / variable intensity control :
 (a) Being part of the lamp: ~~Yes~~ / No ⁽¹⁾
 (b) Being not part of the lamp : ~~Yes~~ / No ⁽¹⁾
- Input voltage(s) supplied by an electronic light source control gear / variable intensity control : Not applicable
- Electronic light source control gear / variable intensity control manufacturer and identification number (when the light source control gear is part of the lamp but is not included into the lamp body) : Not applicable
- Variable luminous intensity: ~~Yes~~ / No ⁽¹⁾
- The lamp is only for use on a vehicle fitted with a tell-tale indicating failure : ~~Yes~~ / No ⁽¹⁾
10. Position of approval mark : On the lamp
11. Reason(s) for extension (if applicable) : Not applicable
12. Approval granted / ~~extended~~ / ~~refused~~ / ~~withdrawn~~ ⁽¹⁾

13. Place : Brussels
14. Date : 17.09.2020
15. Signature :

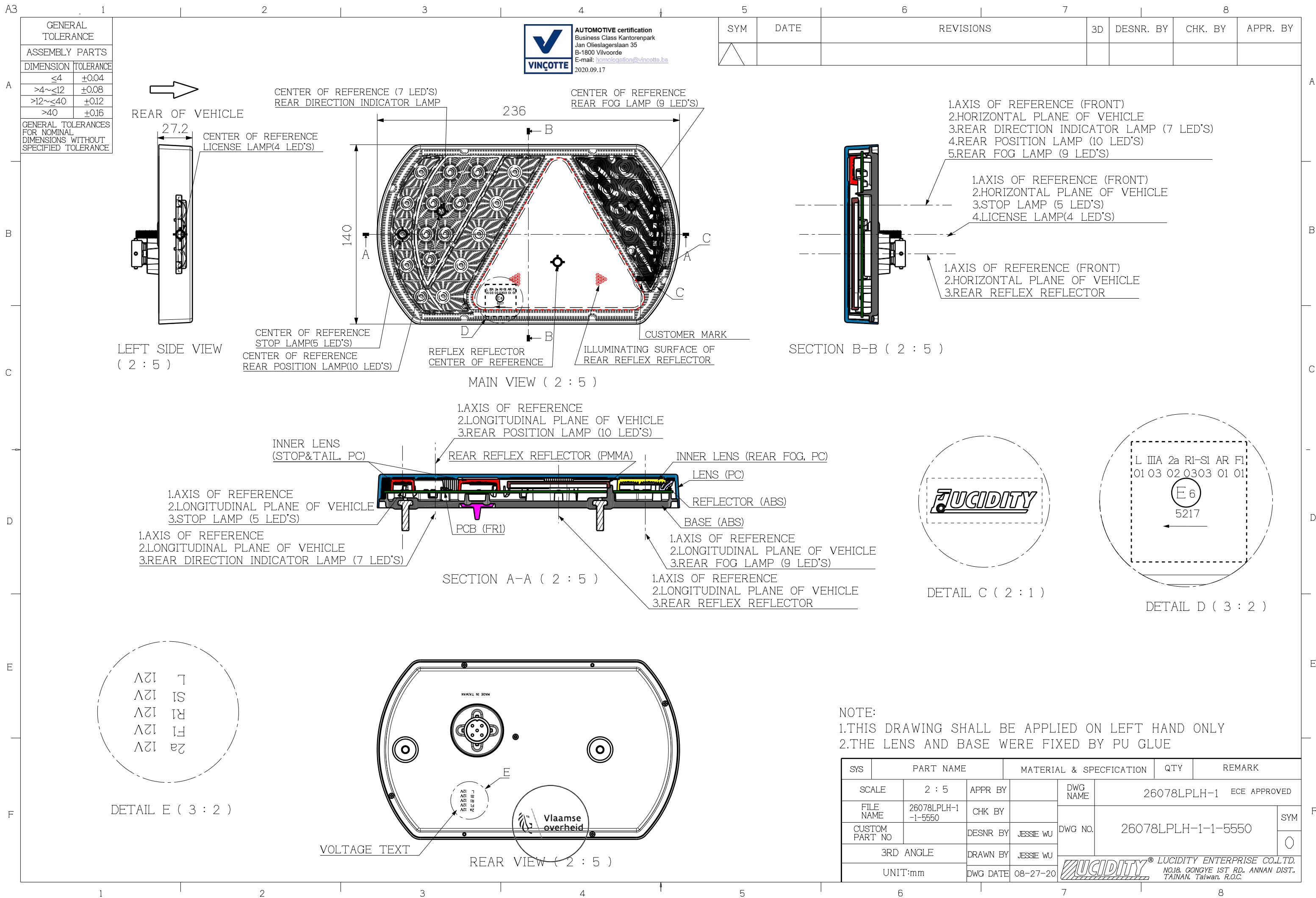
ON BEHALF OF THE SECRETARY-GENERAL:



R. VERHELST

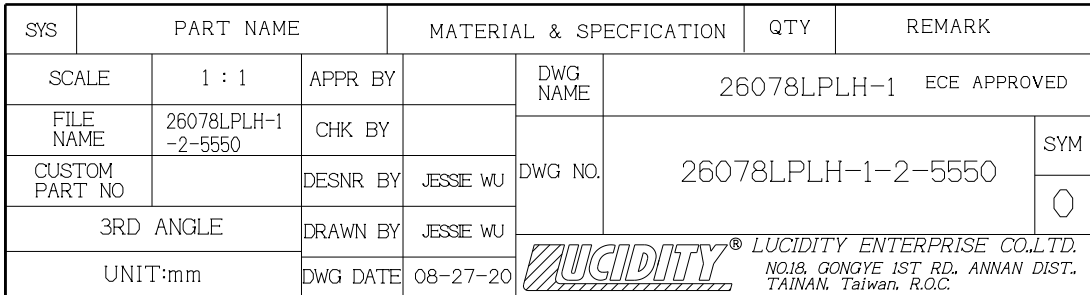
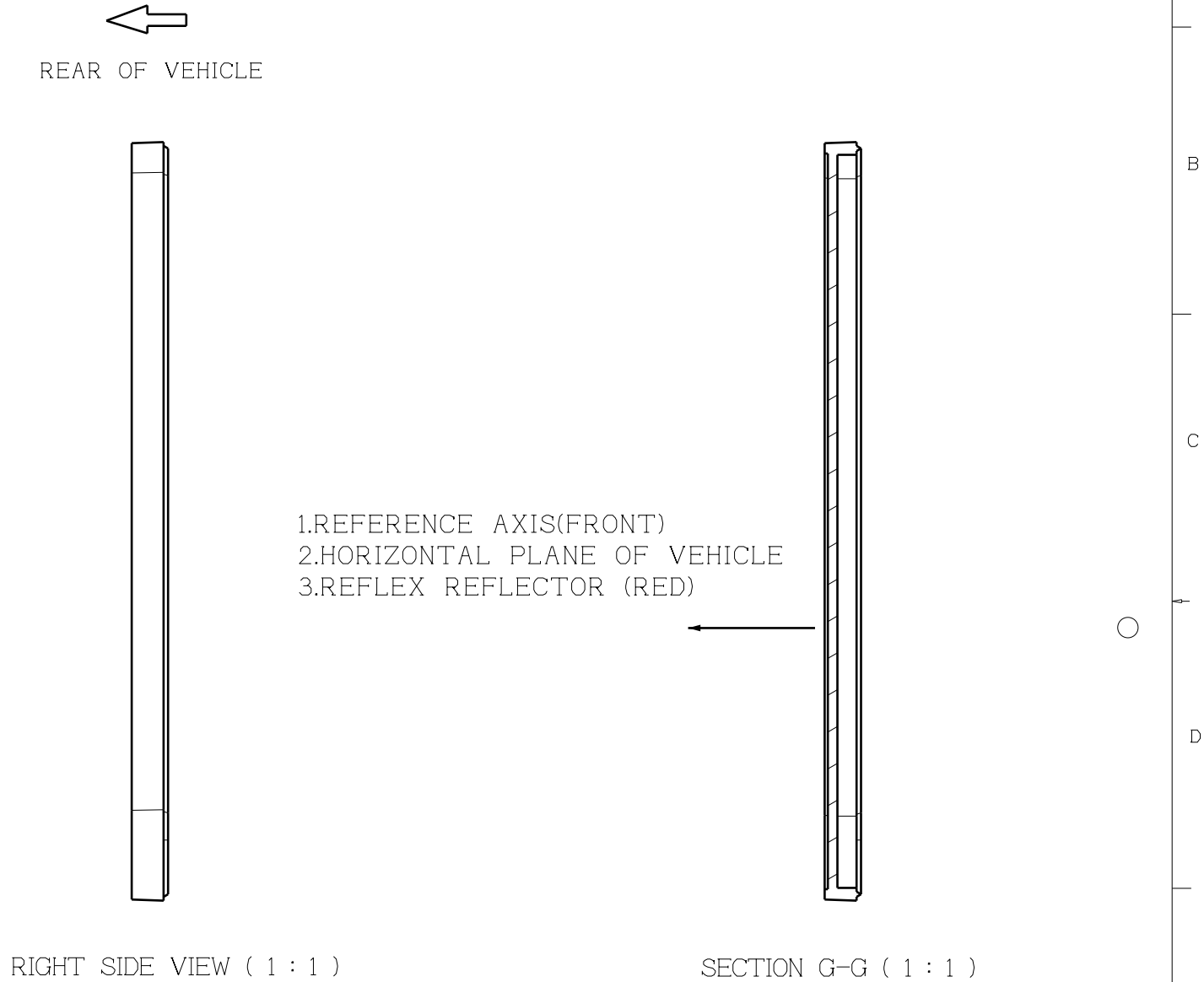
16. The list of documents deposited with the Type Approval Authority which has granted approval is annexed to this communication and may be obtained on request.

(1) *Strike out what does not apply*

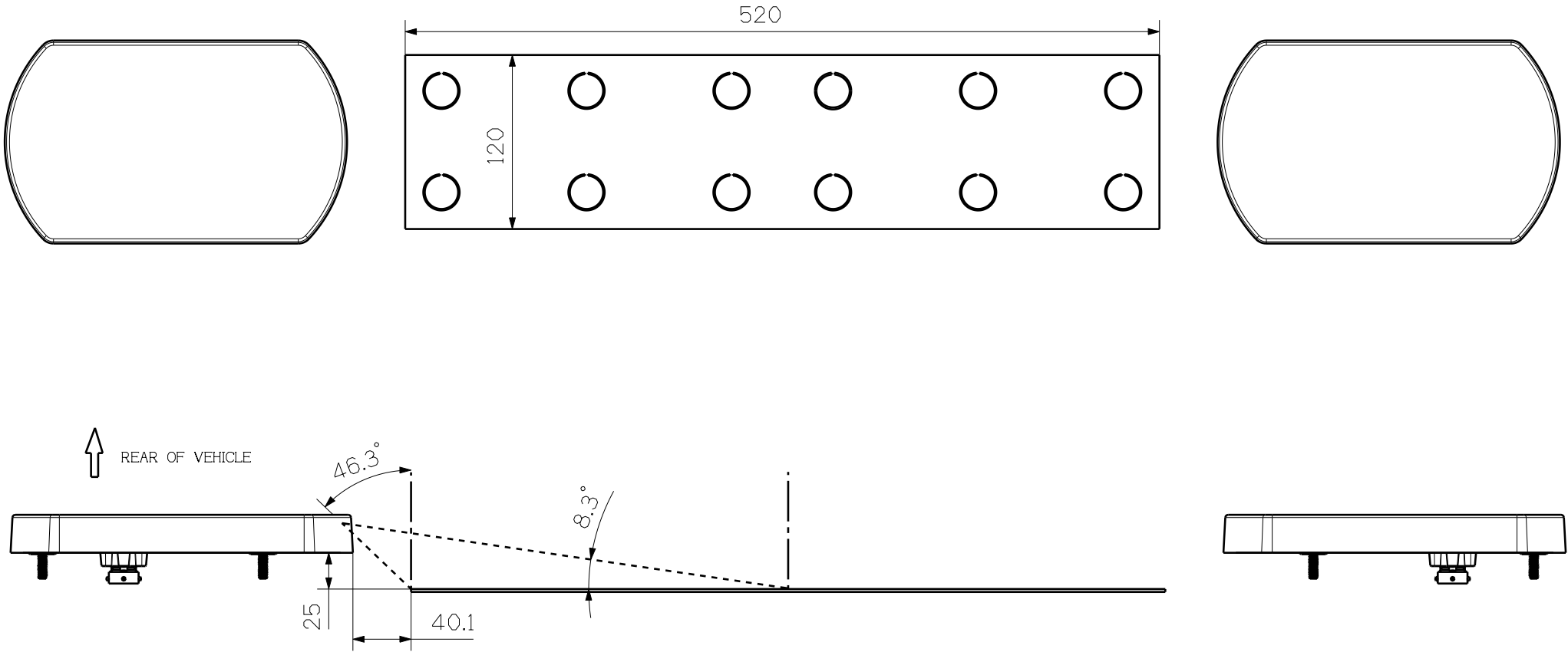




AUTOMOTIVE certification
Business Class Kantorenpark
Jan Olieslagerslaan 35
B-1800 Vilvoorde
E-mail: homologation@vincotte.be
2020.09.17

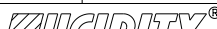


SYM	DATE	REVISIONS	3D	DESNR. BY	CHK. BY	APPR. BY

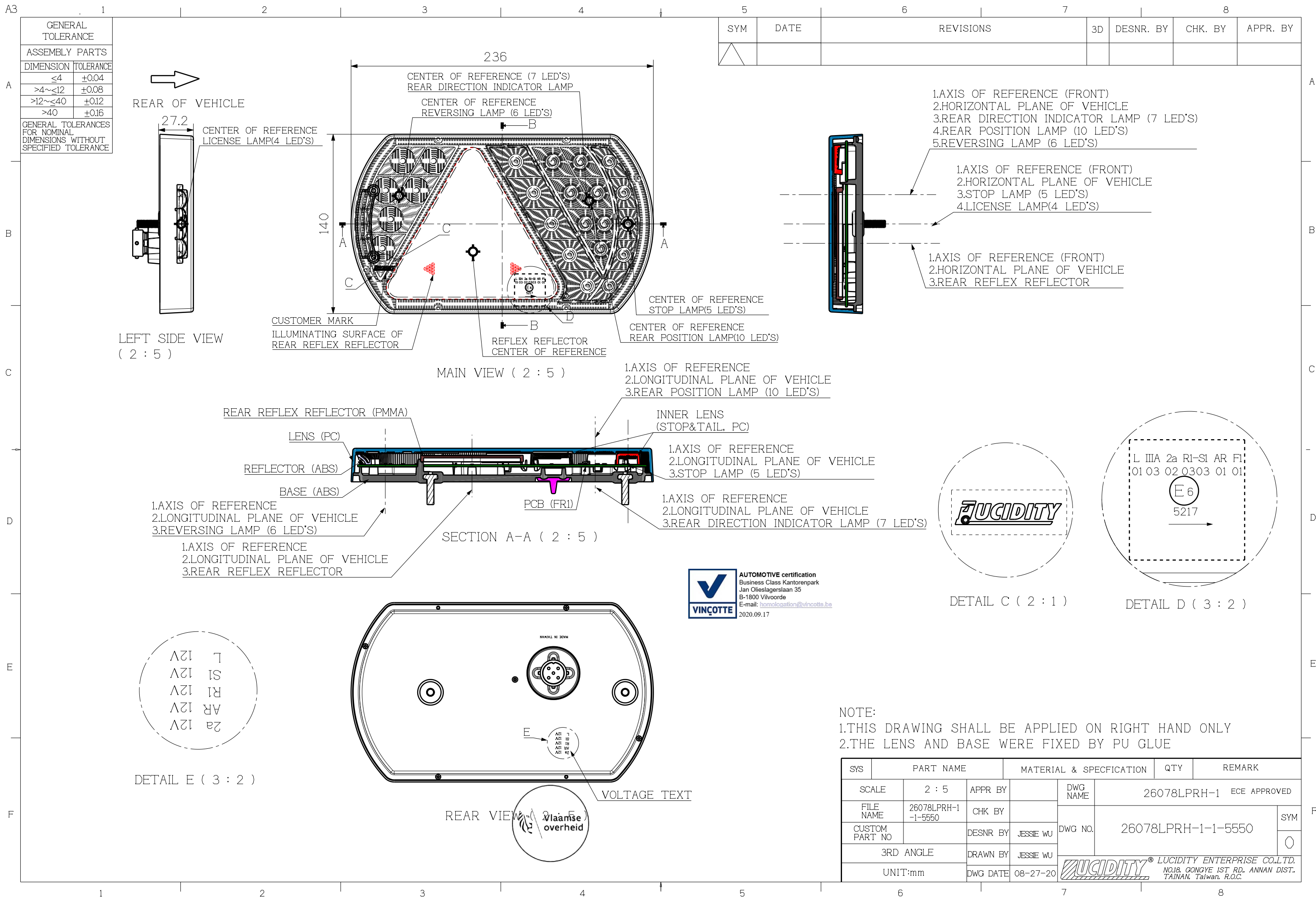


NOTE:

- 1.THE DRAWING SHOW THE POSITION OF LICENSE PLATE
- 2.DEVICES FOR ILLUMINATING A TALL PLATE(520x120)
- 3.ANGLE OF THE INCIDENCE OF THE LIGHT = 81.7°

SYS	PART NAME		MATERIAL & SPECIFICATION		QTY	REMARK	
SCALE	1 : 4	APPR BY		DWG NAME	26078LPLH-1 ECE APPROVED		
FILE NAME	26078LPLH-1-4-5550	CHK BY		DWG NO.	26078LPLH-1-4-5550		SYM
CUSTOM PART NO		DESNR BY	JESSIE WU				0
3RD ANGLE		DRAWN BY	JESSIE WU				
UNIT:mm		DWG DATE	08-27-20	 LUCIDITY ENTERPRISE CO.,LTD. NO.18, GONGYE 1ST RD., ANNAN DIST. TAINAN, Taiwan, R.O.C.			





SYM	DATE	REVISIONS	3D	DESNR. BY	CHK. BY	APPR. BY



RIGHT SIDE VIEW (1 : 1)



SECTION G-G (1 : 1)

- 1.REFERENCE AXIS(FRONT)
- 2.HORIZONTAL PLANE OF VEHICLE
- 3.REFLEX REFLECTOR (RED)

MAIN VIEW


ILLUMINATING SURFACE OF
REAR REFLEX REFLECTOR
AREA : 8,535mm²



SYS	PART NAME		MATERIAL & SPECIFICATION		QTY	REMARK	
SCALE	1 : 1	APPR BY		DWG NAME	26078LPRH-1 ECE APPROVED		
FILE NAME	26078LPRH-1-2-5550	CHK BY		DWG NO.	26078LPRH-1-2-5550		SYM 
CUSTOM PART NO		DESNR BY	JESSIE WU				
3RD ANGLE		DRAWN BY	JESSIE WU				
UNIT:mm		DWG DATE	08-27-20	 LUCIDITY® LUCIDITY ENTERPRISE CO.,LTD. NO.18, GONGYE 1ST RD., ANNAN DIST., TAINAN, Taiwan, R.O.C.			

SYM	DATE	REVISIONS	3D	DESNR. BY	CHK. BY	APPR. BY



SYS		PART NAME		MATERIAL & SPECIFICATION		QTY	REMARK	
SCALE		1 : 4	APPR BY		DWG NAME	26078LPRH-1 ECE APPROVED		
FILE NAME		26078LPRH-1-4-5550	CHK BY		DWG NO.	26078LPRH-1-4-5550		SYM ○
CUSTOM PART NO		DESNR BY	JESSIE WU					
3RD ANGLE		DRAWN BY	JESSIE WU					
UNIT:mm		DWG DATE	08-27-20	 LUCIDITY® LUCIDITY ENTERPRISE CO.,LTD. NO.18, GONGYE 1ST RD., ANNAN DIST., TAINAN, Taiwan, R.O.C.				

A3

A

B

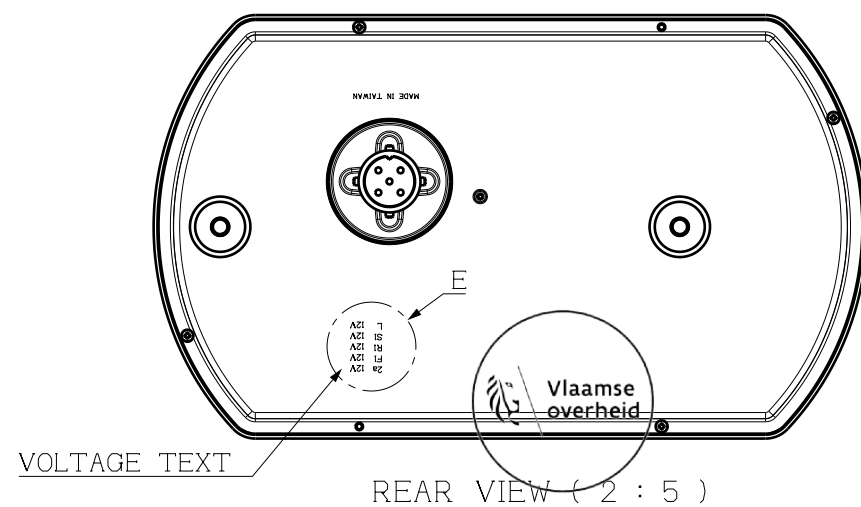
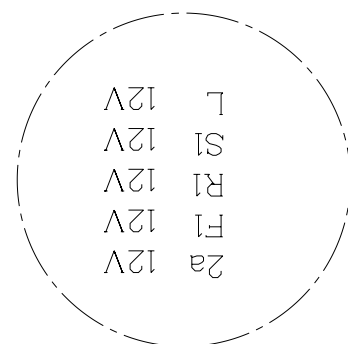
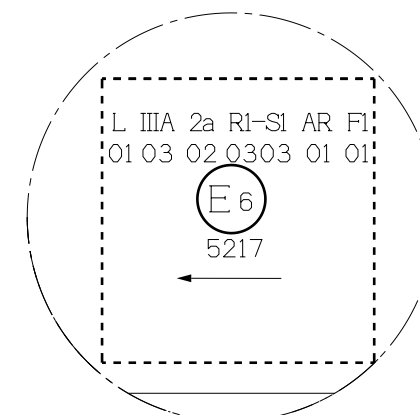
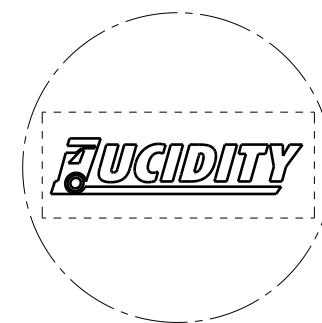
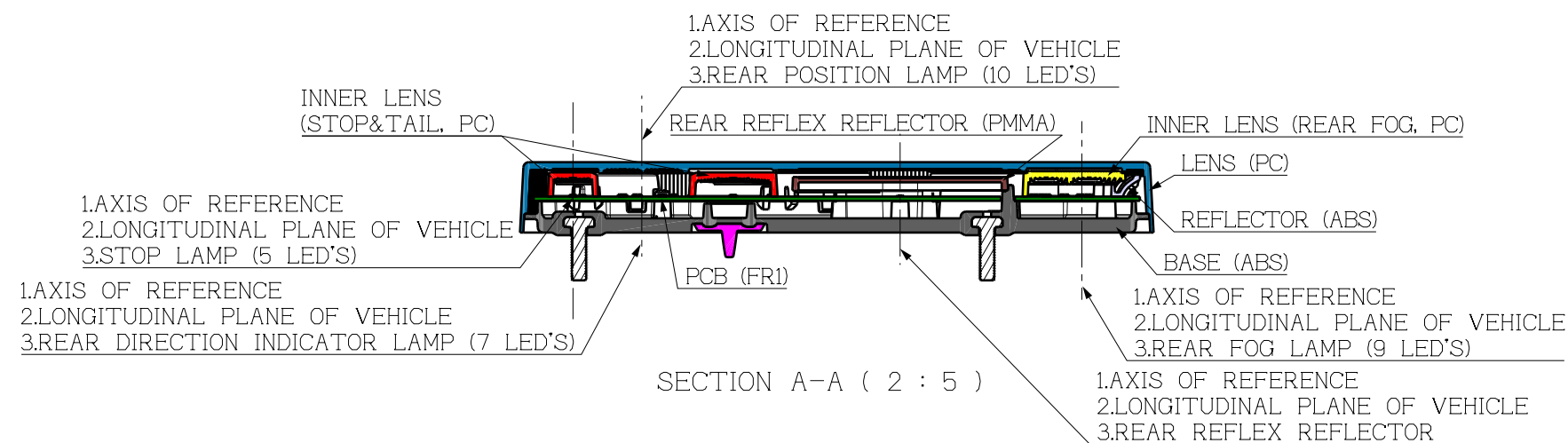
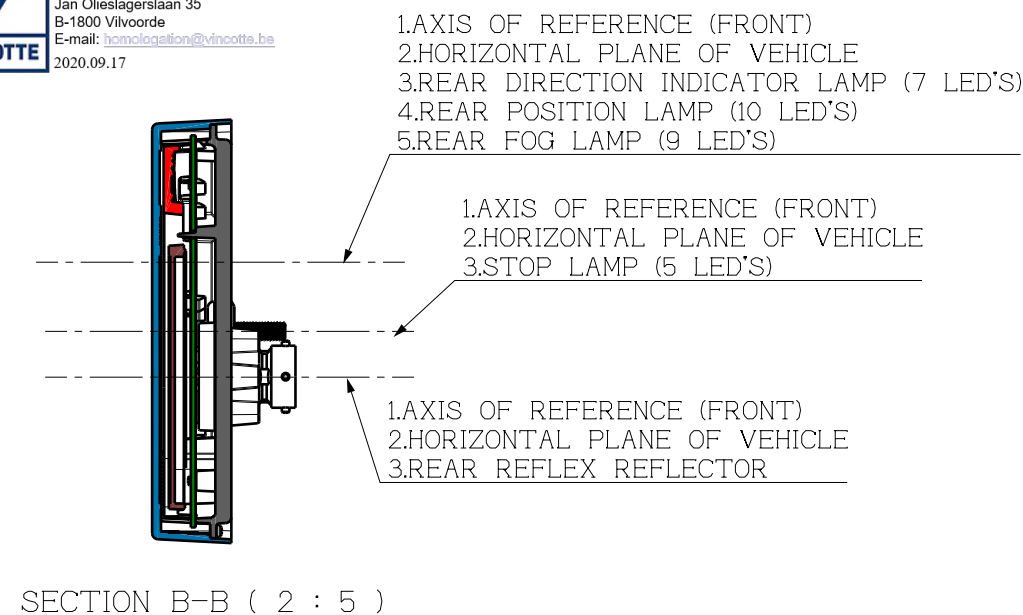
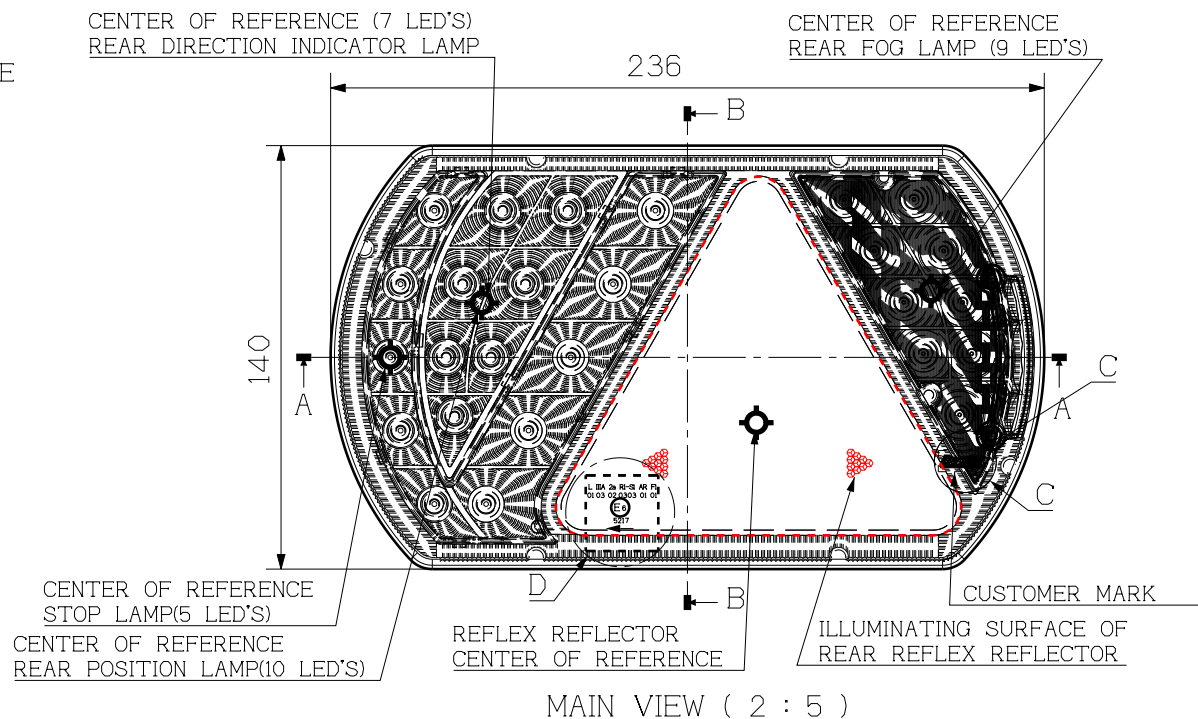
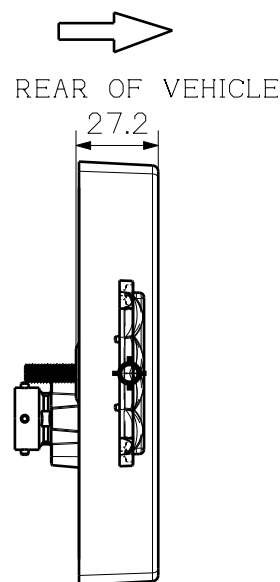
C

D

E

F

GENERAL TOLERANCE	
ASSEMBLY PARTS	
DIMENSION	TOLERANCE
≤4	±0.04
>4~≤12	±0.08
>12~≤40	±0.12
>40	±0.16
GENERAL TOLERANCES FOR NOMINAL DIMENSIONS WITHOUT SPECIFIED TOLERANCE	

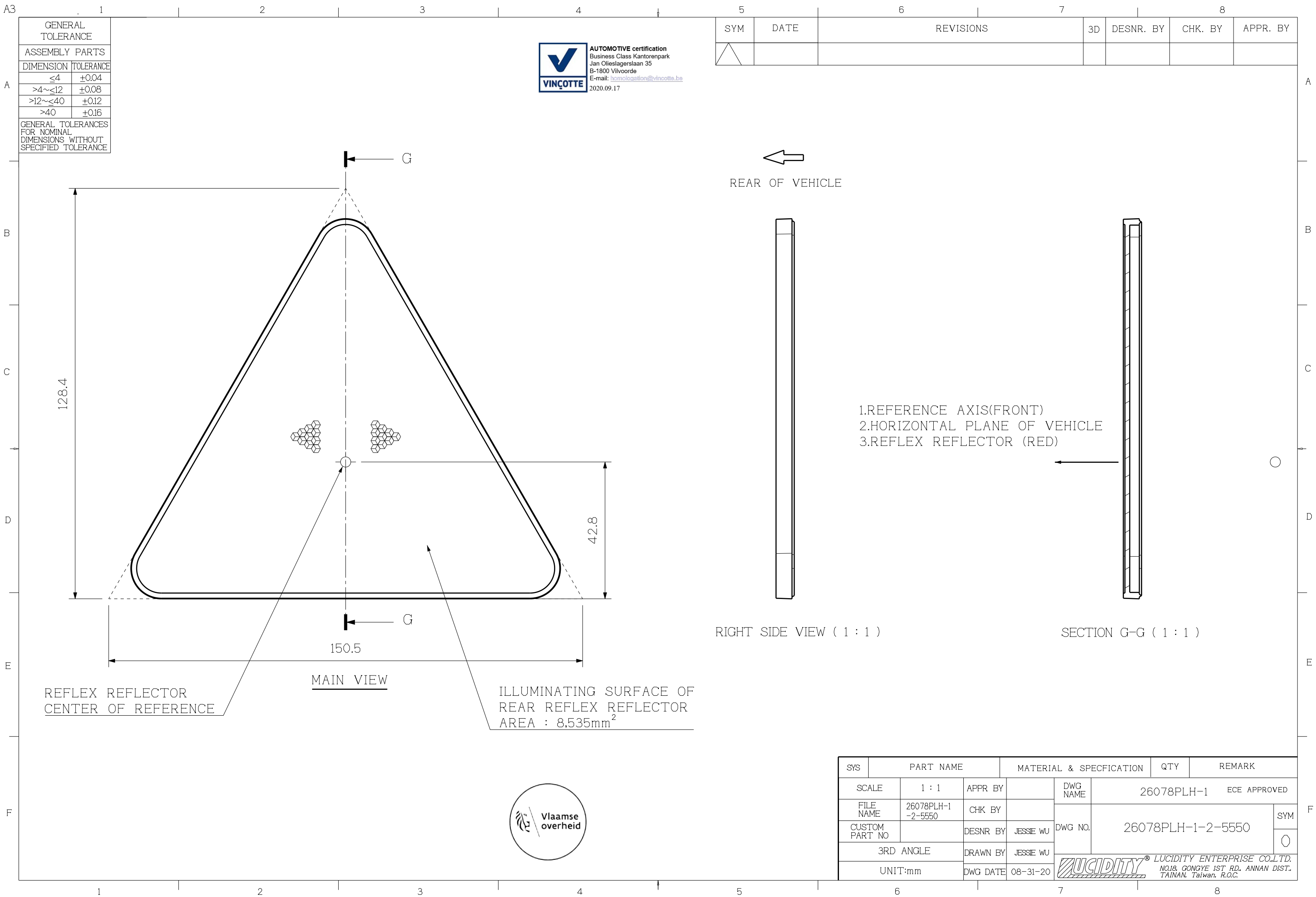


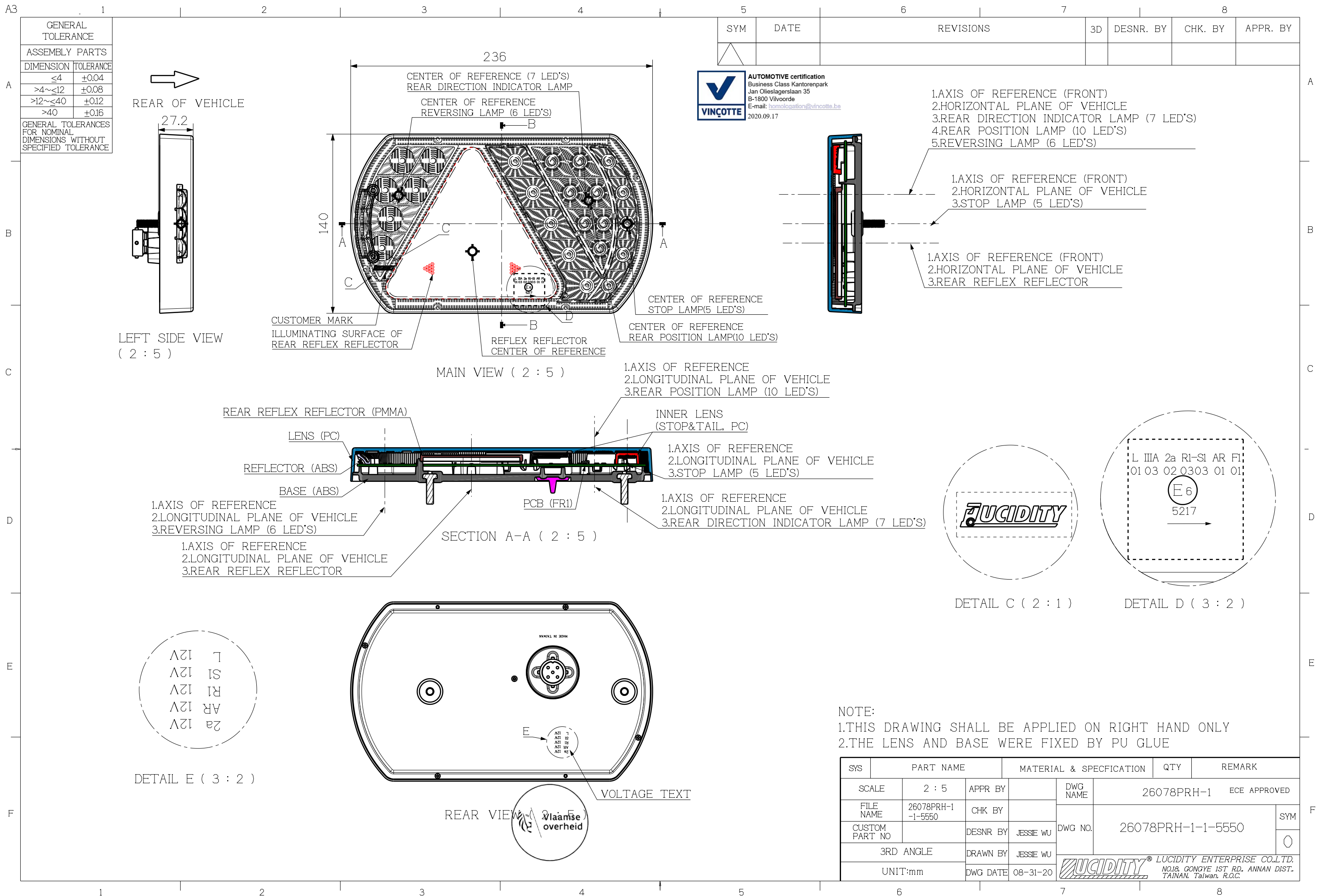
NOTE:

- 1.THIS DRAWING SHALL BE APPLIED ON LEFT HAND ONLY
- 2.THE LENS AND BASE WERE FIXED BY PU GLUE

SYS	PART NAME	MATERIAL & SPECIFICATION	QTY	REMARK
SCALE	2 : 5	APPR BY	DWG NAME	26078PLH-1 ECE APPROVED
FILE NAME	26078PLH-1-1-5550	CHK BY	DWG NO.	26078PLH-1-1-5550
CUSTOM PART NO		DESNR BY JESSIE WU		
3RD ANGLE		DRAWN BY JESSIE WU		
UNIT:mm		DWG DATE 08-31-20		

LUCIDITY LUCIDITY ENTERPRISE CO.,LTD.
NO.18, GONGYE 1ST RD., ANNAN DIST.
TAINAN, Taiwan, R.O.C.





F