

Index to the information package of a type approval with regard to a Regulation (UNECE) :

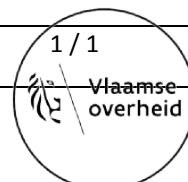
Last applicable Series of amendments	Base approval and update No	Extension No	Revision No	Issue date	Information document	
					Reference	Number of pages
R23-01	00	-	-	17.09.2020	LUCIDITY 26078LPLH-1 / 00	17

Approved and to be attached to the approval certificate,



R. VERHELST

Updated Approval No: E6*23R01/00*5217*00		BEVASYS : 202001278
Update No : 00	Issue date : 17.09.2020	1 / 1



E6

Communication concerning :

- Approval granted <sup>(1)</sup>
- ~~Approval extended~~ <sup>(1)</sup>
- ~~Approval refused~~ <sup>(1)</sup>
- ~~Approval withdrawn~~ <sup>(1)</sup>
- ~~Production definitively discontinued~~ <sup>(1)</sup>

of a type of reversing lamp, pursuant to Regulation No.23  
of a type of manoeuvring lamp, pursuant to Regulation No.23

Approval No : E6\*23R01/00\*5217\*00

Extension No : -

Approval mark :	L	IIIA	2a	R1-S1	AR	F1		L	IIIA	2a	R1-S1	AR	F1
	01	03	02	03 03	01	01		01	03	02	03 03	01	01

E6


5217  
←

Left hand

E6

5217  
→

Right hand

1. Trade name or mark of the device : 
2. Manufacturer's name for the type of device :  
26078PLH-1, 26078PRH-1  
26078LPLH-1, 26078LPRH-1
3. Manufacturer's name and address :  
Lucidity Enterprise Co., Ltd  
No. 18, Gong-Ye 1st Road, Annan District,  
70955 Tainan City, Taiwan / R.O.C.
4. If applicable, name and address of the manufacturer's representative :  
-
5. Submitted for approval on :  
24.08.2020 ~ 28.08.2020
6. Technical Service responsible for conducting approval test:  
Vincotte N.V.  
Jan Olieslagerslaan 35  
1800 Vilvoorde  
Belgium
7. Date of test report issued by that Service :  
17.09.2020
8. Number of test report issued by that Service:  
H2060863653/124

9.	Concise description:	See information document
	Number, category and kind of light source(s) :	6 LEDs / 6 light sources
	Voltage and wattage :	12V, 3.5W
	Application of an electronic light source control gear :	
	(a) Being part of the lamp:	<del>Yes</del> / No <sup>(1)</sup>
	(b) Being not part of the lamp :	<del>Yes</del> / No <sup>(1)</sup>
	Input voltage(s) supplied by an electronic light source control gear :	Not applicable
	Electronic light source control gear manufacturer and identification number (when the light source control gear is part of the lamp but is not included into the lamp body):	Not applicable
	Light source module :	<del>Yes</del> / No <sup>(1)</sup>
	Light source module specific identification code :	Not applicable
	Geometrical conditions of installation and relating variations; if any:	See information document
	For a type of manoeuvring lamp pursuant to Regulation No. 23 paragraph 6.2.2. Maximum mounting height :	Not applicable
	The lamp is only for use on a vehicle fitted with a tell-tale indicating failure :	<del>Yes</del> / No <sup>(1)</sup>
10.	Position of approval mark :	On the lamp
11.	Comments : In the case of a reversing lamp, this device shall be installed on a vehicle only as part of a pair of devices:	<del>Yes</del> / No <sup>(1)</sup>
12.	Reason(s) for extension (if applicable) :	Not applicable
13.	Approval granted / <del>extended</del> / <del>refused</del> / <del>withdrawn</del> <sup>(1)</sup>	

14. Place : Brussels
15. Date : 17.09.2020
16. Signature :

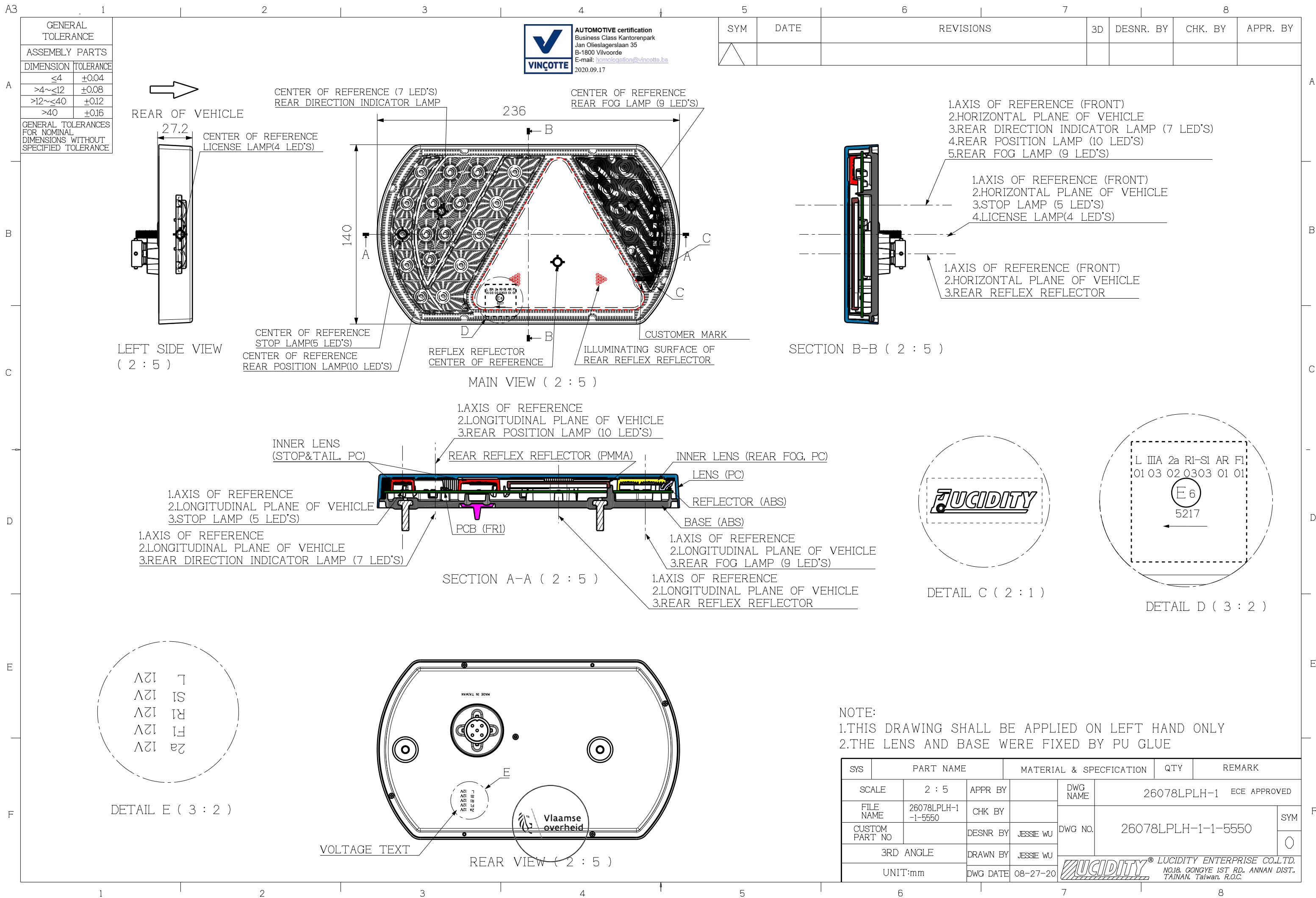
ON BEHALF OF THE SECRETARY-GENERAL:

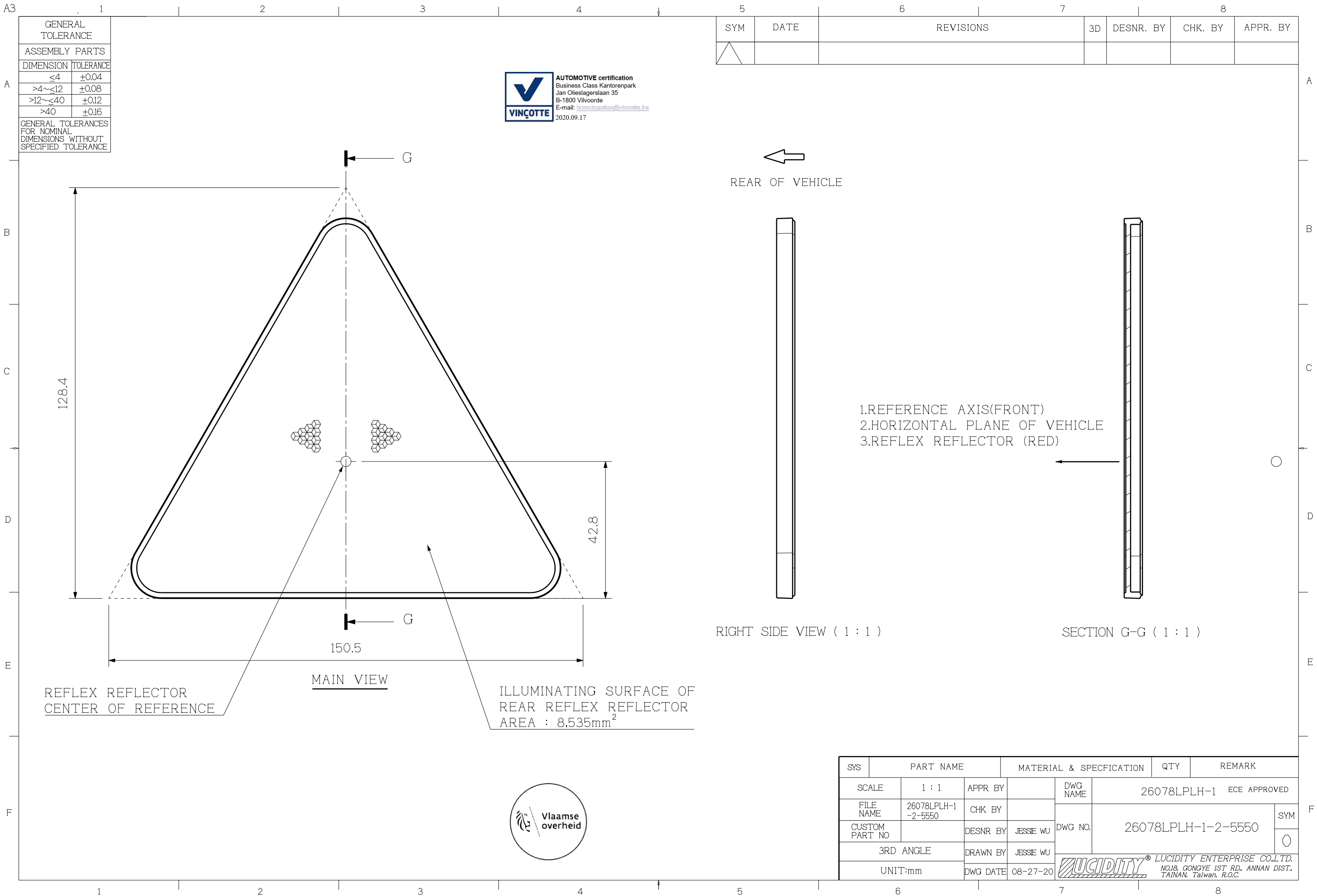


R. VERHELST

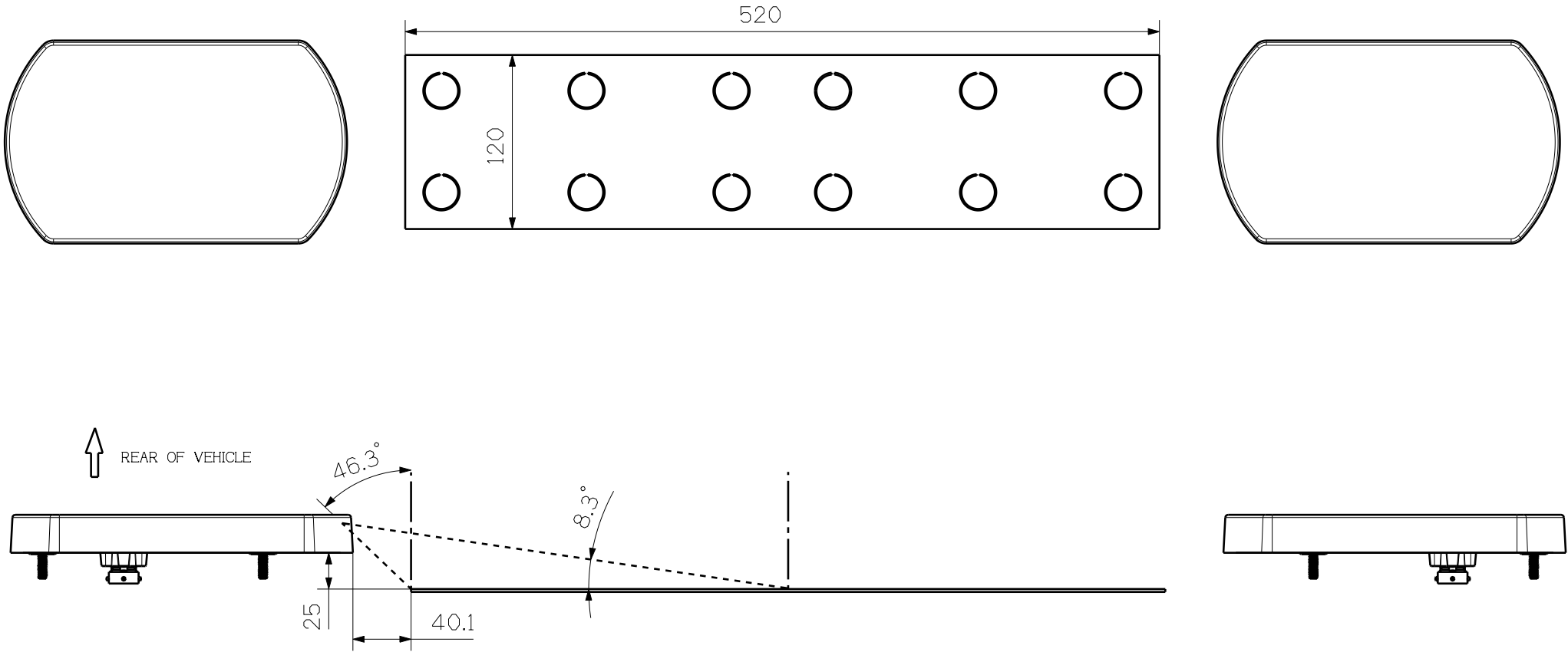
17. The list of documents deposited with the Type Approval Authority which has granted approval is annexed to this communication and may be obtained on request

(1) *Strike out which does not apply*







SYM	DATE	REVISIONS	3D	DESNR. BY	CHK. BY	APPR. BY



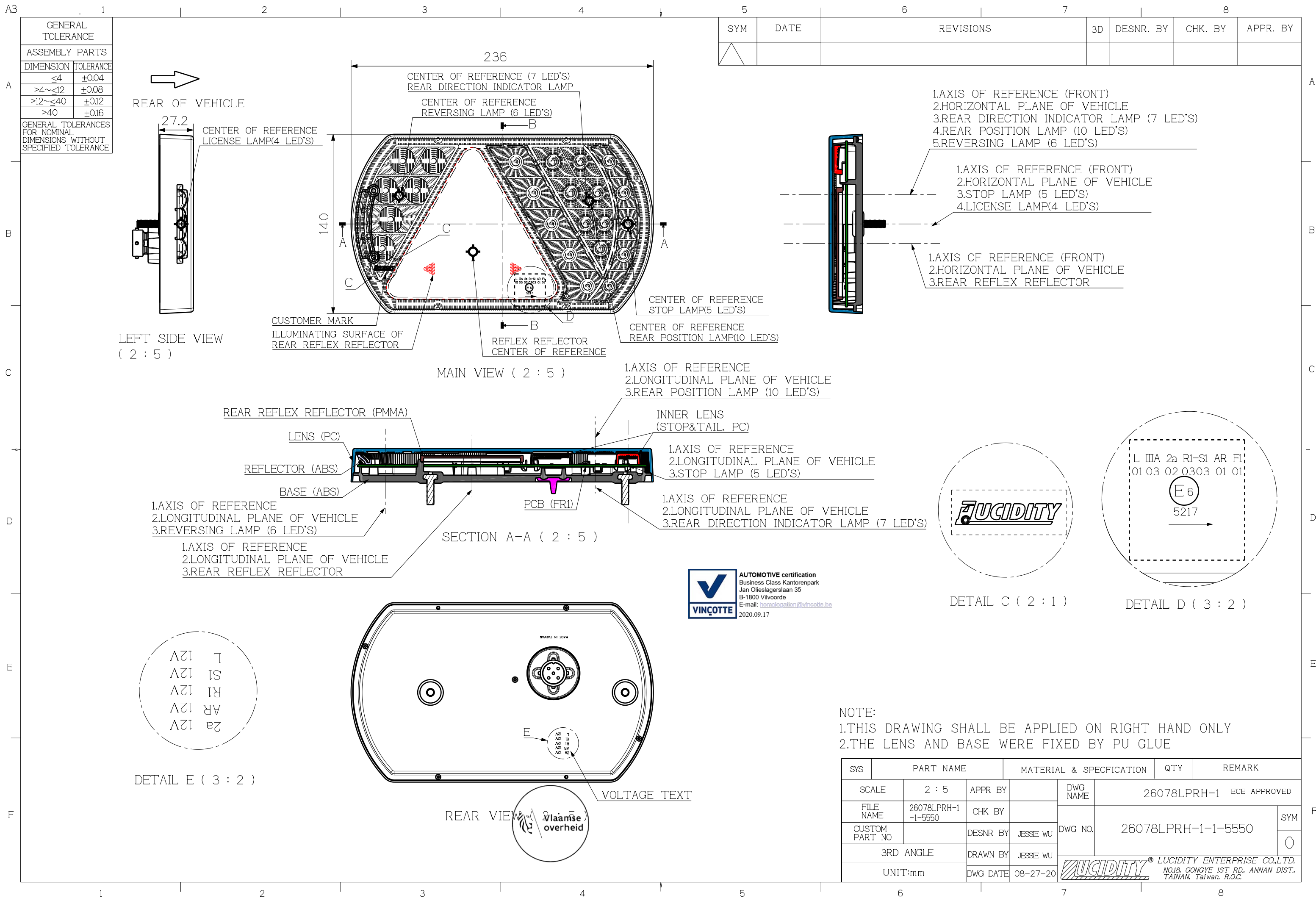
NOTE:

- 1.THE DRAWING SHOW THE POSITION OF LICENSE PLATE
- 2.DEVICES FOR ILLUMINATING A TALL PLATE(520x120)
- 3.ANGLE OF THE INCIDENCE OF THE LIGHT =  $81.7^\circ$

SYS	PART NAME		MATERIAL & SPECIFICATION		QTY	REMARK	
SCALE	1 : 4	APPR BY		DWG NAME	26078LPLH-1 ECE APPROVED		
FILE NAME	26078LPLH-1-4-5550	CHK BY		DWG NO.	26078LPLH-1-4-5550		SYM 
CUSTOM PART NO		DESNR BY	JESSIE WU				
3RD ANGLE		DRAWN BY	JESSIE WU				
UNIT:mm		DWG DATE	08-27-20	 <b>LUCIDITY ENTERPRISE CO.,LTD.</b> NO.18, GONGYE 1ST RD., ANNAN DIST., TAINAN, Taiwan, R.O.C.			

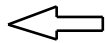








SYM	DATE	REVISIONS	3D	DESNR. BY	CHK. BY	APPR. BY



RIGHT SIDE VIEW ( 1 : 1 )


SECTION G-G ( 1 : 1 )

- 1.REFERENCE AXIS(FRONT)
- 2.HORIZONTAL PLANE OF VEHICLE
- 3.REFLEX REFLECTOR (RED)

MAIN VIEW

ILLUMINATING SURFACE OF  
REAR REFLEX REFLECTOR  
AREA : 8,535mm<sup>2</sup>



SYS	PART NAME		MATERIAL & SPECIFICATION		QTY	REMARK
SCALE	1 : 1	APPR BY		DWG NAME	26078LPRH-1 ECE APPROVED	
FILE NAME	26078LPRH-1 -2-5550	CHK BY		DWG NO.	26078LPRH-1-2-5550	SYM
CUSTOM PART NO		DESNR BY	JESSIE WU			
3RD ANGLE		DRAWN BY	JESSIE WU			
UNIT:mm		DWG DATE	08-27-20	 <b>LUCIDITY®</b> LUCIDITY ENTERPRISE CO.,LTD. NO.18, GONGYE 1ST RD., ANNAN DIST., TAINAN, Taiwan, R.O.C.		



A3

A

B

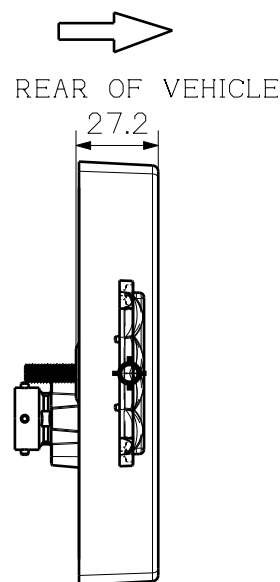
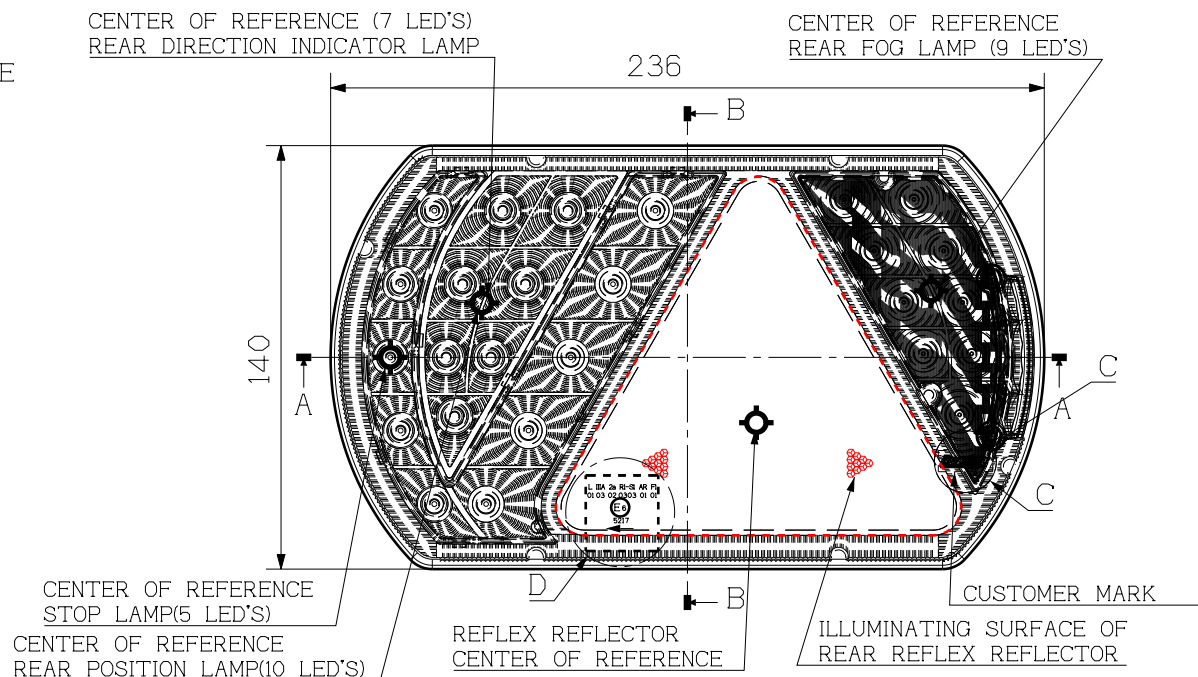
C

D

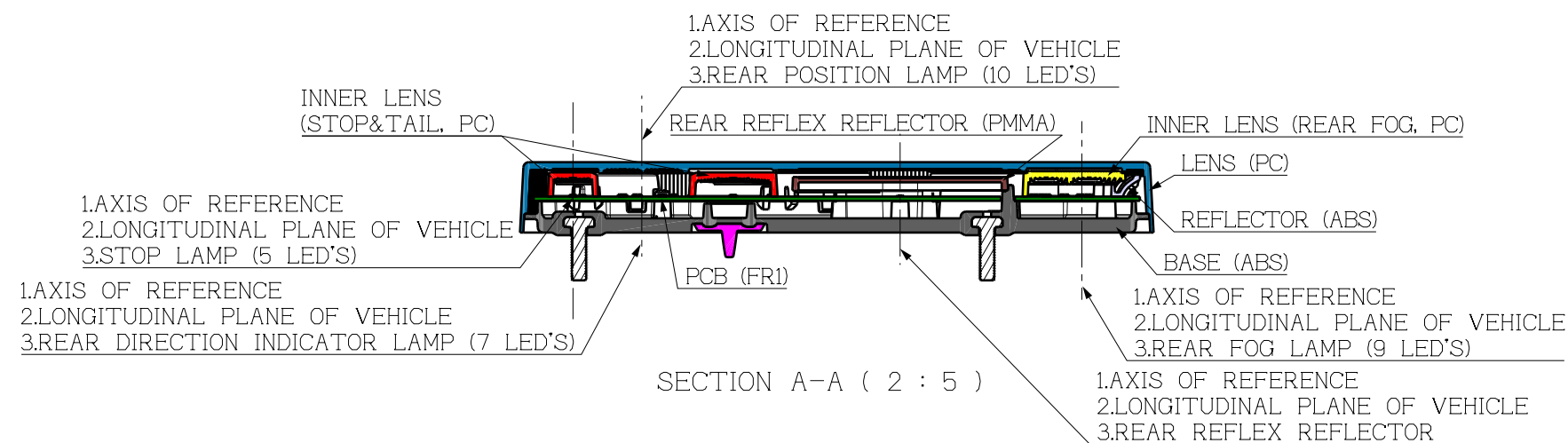
E

F

GENERAL TOLERANCE	
ASSEMBLY PARTS	
DIMENSION	TOLERANCE
≤4	±0.04
>4~≤12	±0.08
>12~≤40	±0.12
>40	±0.16
GENERAL TOLERANCES FOR NOMINAL DIMENSIONS WITHOUT SPECIFIED TOLERANCE	

LEFT SIDE VIEW  
( 2 : 5 )

MAIN VIEW ( 2 : 5 )



SECTION A-A ( 2 : 5 )

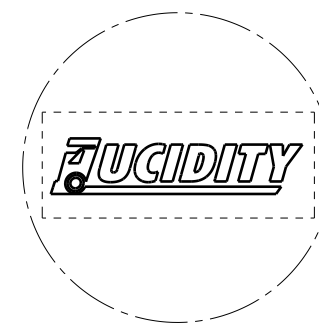


- 1.AXIS OF REFERENCE (FRONT)
- 2.HORIZONTAL PLANE OF VEHICLE
- 3.REAR DIRECTION INDICATOR LAMP (7 LED'S)
- 4.REAR POSITION LAMP (10 LED'S)
- 5.REAR FOG LAMP (9 LED'S)

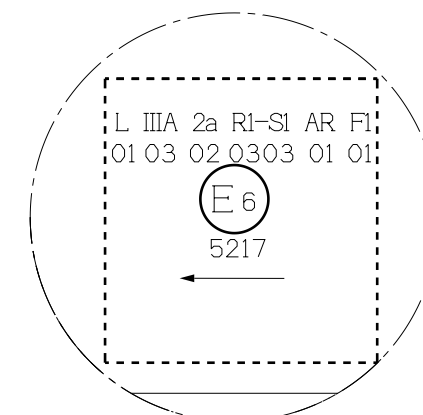
- 1.AXIS OF REFERENCE (FRONT)
- 2.HORIZONTAL PLANE OF VEHICLE
- 3.STOP LAMP (5 LED'S)

- 1.AXIS OF REFERENCE (FRONT)
- 2.HORIZONTAL PLANE OF VEHICLE
- 3.REAR REFLEX REFLECTOR

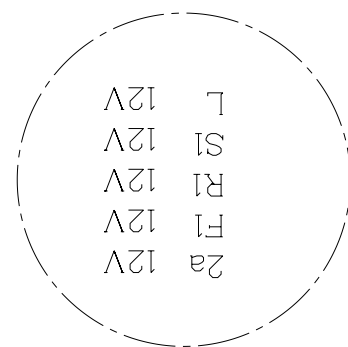
SECTION B-B ( 2 : 5 )



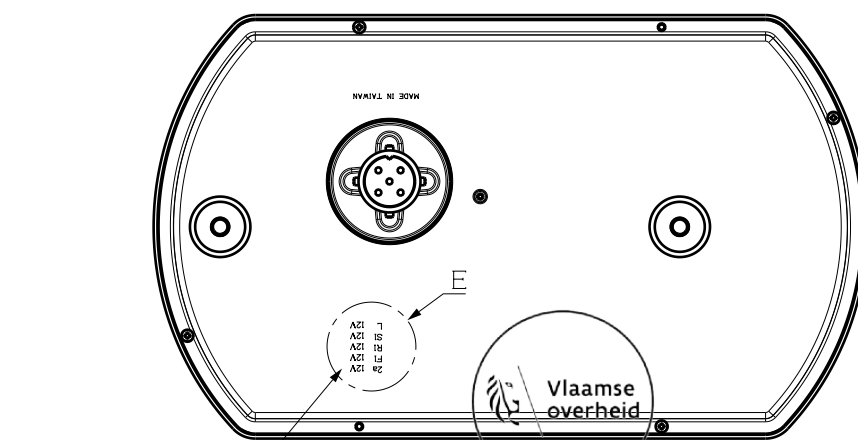
DETAIL C ( 2 : 1 )



DETAIL D ( 3 : 2 )



DETAIL E ( 3 : 2 )



REAR VIEW ( 2 : 5 )

## NOTE:

- 1.THIS DRAWING SHALL BE APPLIED ON LEFT HAND ONLY
- 2.THE LENS AND BASE WERE FIXED BY PU GLUE

SYS	PART NAME	MATERIAL & SPECIFICATION	QTY	REMARK
SCALE	2 : 5	APPR BY	DWG NAME	26078PLH-1 ECE APPROVED
FILE NAME	26078PLH-1-1-5550	CHK BY	DWG NO.	26078PLH-1-1-5550
CUSTOM PART NO		DESNR BY JESSIE WU		
3RD ANGLE		DRAWN BY JESSIE WU		
UNIT:mm		DWG DATE 08-31-20		

**LUCIDITY** LUCIDITY ENTERPRISE CO.,LTD.  
NO.18, GONGYE 1ST RD., ANNAN DIST.,  
TAINAN, Taiwan, R.O.C.

A3

A

B

C

D

E

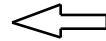
F

GENERAL TOLERANCE	
ASSEMBLY PARTS	
DIMENSION	TOLERANCE
≤4	±0.04
>4~≤12	±0.08
>12~≤40	±0.12
>40	±0.16
GENERAL TOLERANCES FOR NOMINAL DIMENSIONS WITHOUT SPECIFIED TOLERANCE	



**AUTOMOTIVE certification**  
Business Class Kantorenpark  
Jan Olieslagerslaan 35  
B-1800 Vilvoorde  
E-mail: [homologation@vincotte.be](mailto:homologation@vincotte.be)  
2020.09.17

SYM	DATE	REVISIONS	3D	DESNR. BY	CHK. BY	APPR. BY
△						



REAR OF VEHICLE

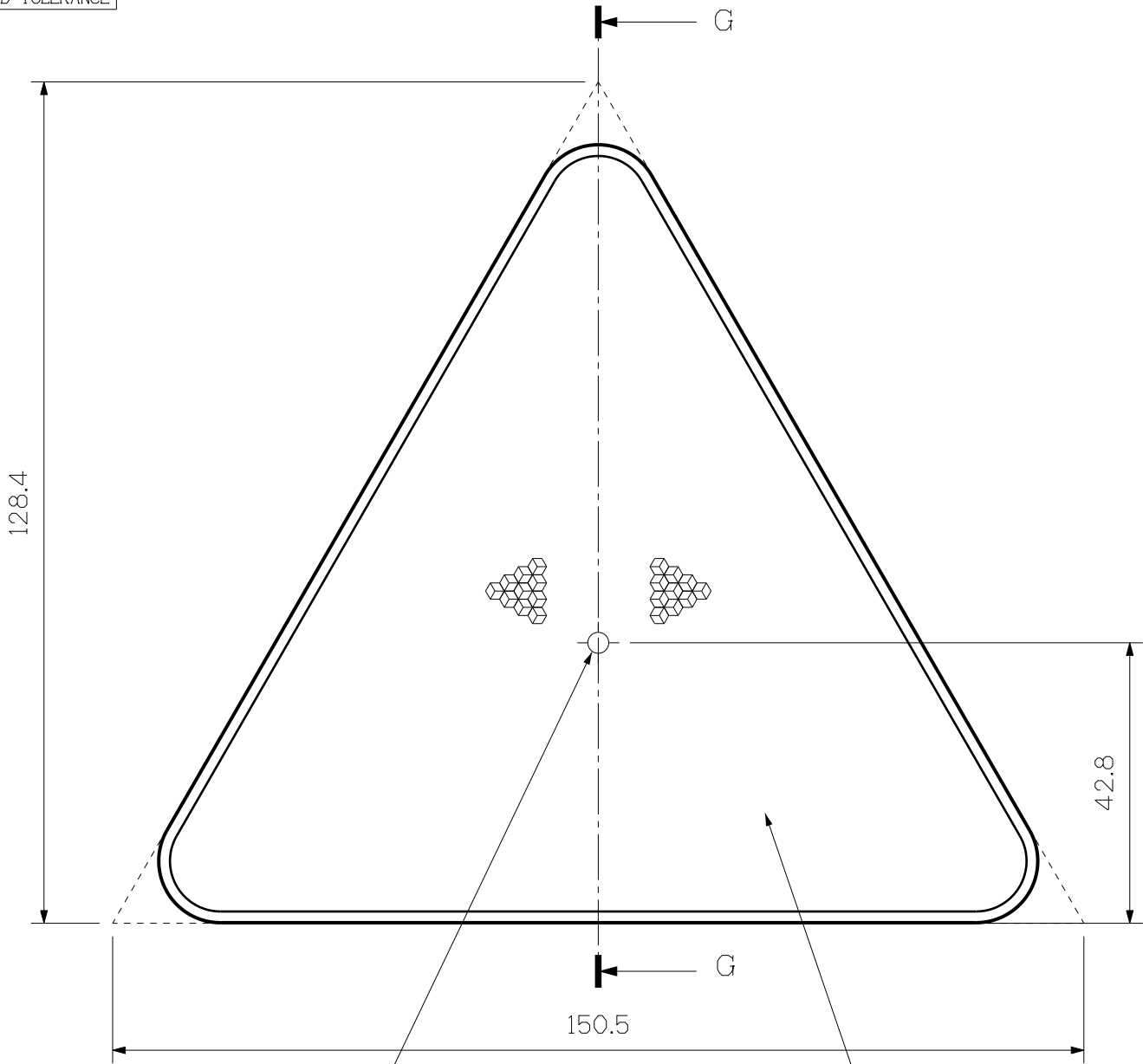


RIGHT SIDE VIEW ( 1 : 1 )



SECTION G-G ( 1 : 1 )

- 1.REFERENCE AXIS(FRONT)
- 2.HORIZONTAL PLANE OF VEHICLE
- 3.REFLEX REFLECTOR (RED)




MAIN VIEW

REFLEX REFLECTOR  
CENTER OF REFERENCE

ILLUMINATING SURFACE OF  
REAR REFLEX REFLECTOR  
AREA : 8,535mm<sup>2</sup>



SYS	PART NAME		MATERIAL & SPECIFICATION		QTY	REMARK		
	SCALE	1 : 1	APPR BY		DWG NAME	26078PLH-1 ECE APPROVED		
	FILE NAME	26078PLH-1-2-5550	CHK BY		DWG NO.	26078PLH-1-2-5550		SYM
	CUSTOM PART NO		DESNR BY	JESSIE WU				
	3RD ANGLE		DRAWN BY	JESSIE WU		 LUCIDITY ENTERPRISE CO.,LTD. NO.18, GONGYE 1ST RD. ANNAN DIST. TAINAN, Taiwan, R.O.C.		
	UNIT:mm		DWG DATE	08-31-20				

A

B

C

D

E

F

1

2

3

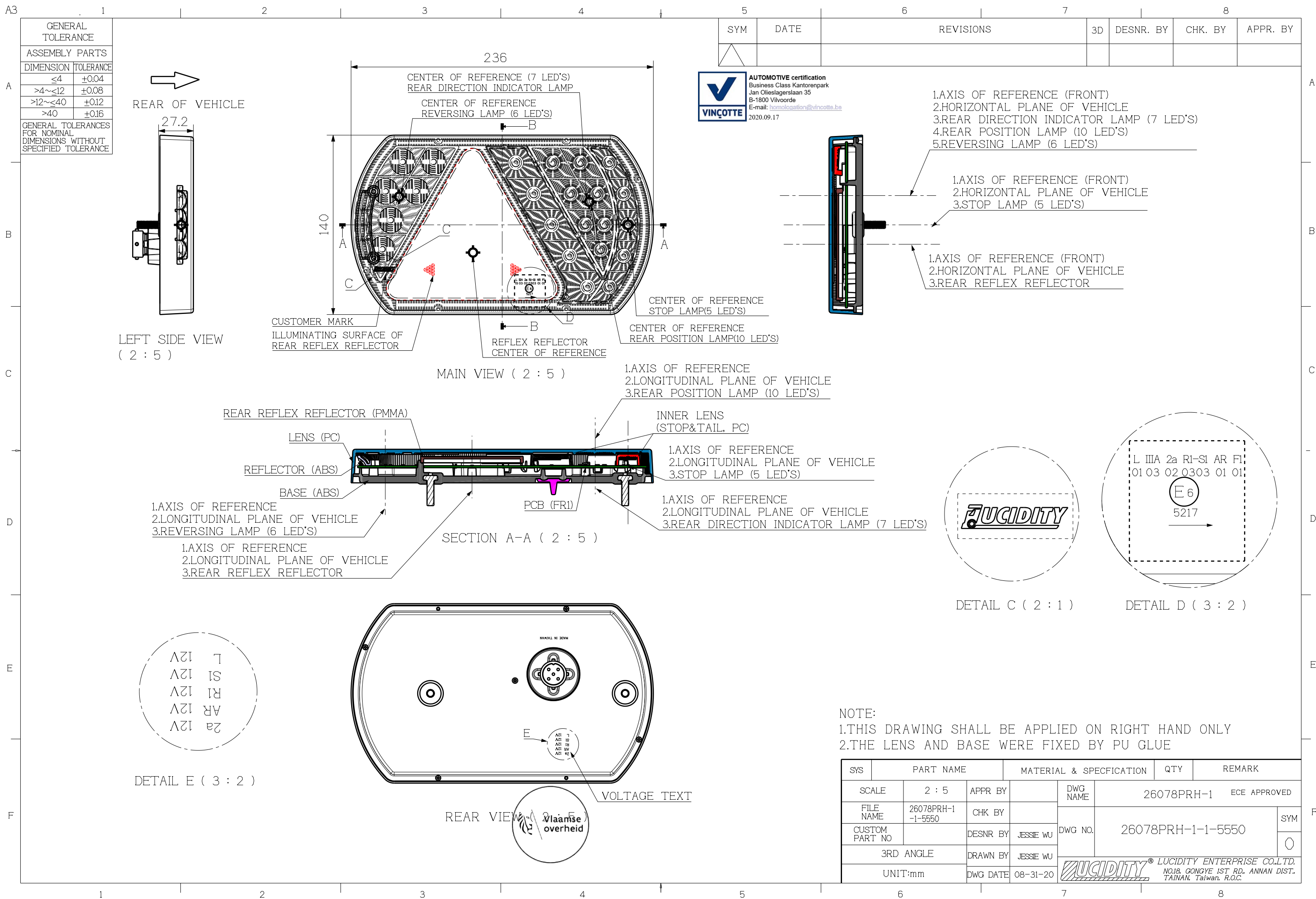
4

5

6

7

8



--	--

F

