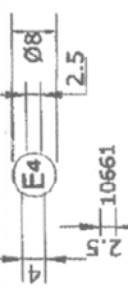


APPROVALS:
DESIGNER: [Signature]
CHECKED: [Signature]
DRAWN: [Signature]
DATE: [Date]
SCALE: [Scale]
SHEET NO.: [Sheet No.]



SIZE OF MARKING:

R-S1 IIIA 2a F L AR
02 02 01 00 00 00

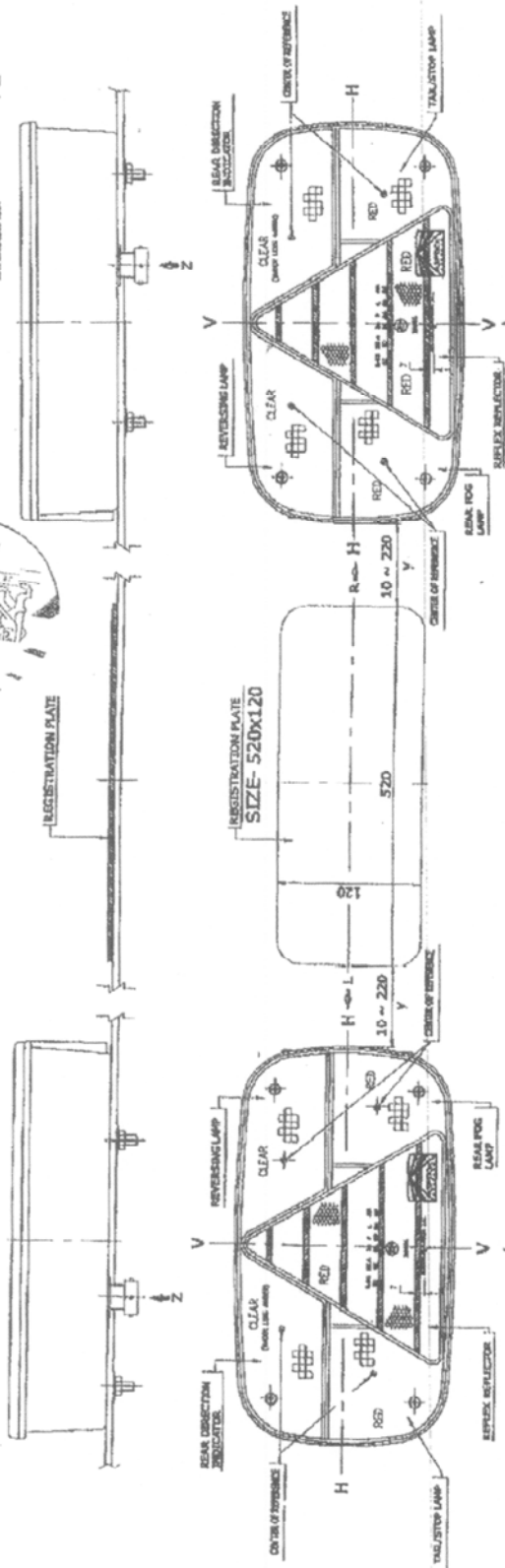


SHEET 2/4

MATL. SPEC.	FINISH	COMPONENT FOR:
		TRAILERS
FIEW INDUSTRIES LTD.		
52 SELF STORAGE C.T. ROAD		
KATKOT, DIST. SONBET (MR.)		
PART NAME: TAIL LAMP ASSY.		
DRG. NO. FMN-3		
MOD. NO. 0		

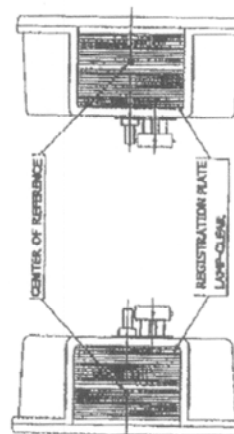
MOD. NO.	BATT.	LOCN.	AUTOMATICS	REASON	DEC.
CHANGE NOTE					

INFORMATION FOLDER NO.	64-79-0210661	79-2
APPROVAL NO.	64-48-0210661	
REAL POSITION LAMP	64-48-0210661	
STOP LAMP	64-48-0210661	
REAL DIRECTION INDICATOR	64-48-0210661	
REAL REGISTRATION PLATE LAMP	64-48-0210661	
REVERSE LAMP	64-48-0210661	
REAL POC LAMP	64-48-0210661	
REFLEX REFLECTOR	64-48-0210661	
EXTENSION NO.	01	



NOTE:-

- | QUESTIONS | ANSWERS |
|--------------------------------------------------|---------|
| 1. FOR MOUNTING EITHER OUTSIDE OR INSIDE OF BODY | OUTSIDE |
| 2. SPECIAL MOUNTING | — |
| 3. SPECIAL MOUNTING | — |
| 4. SPECIAL MOUNTING | — |
| 5. SPECIAL MOUNTING | — |
| 6. SPECIAL MOUNTING | — |
| 7. SPECIAL MOUNTING | — |
| 8. SPECIAL MOUNTING | — |
| 9. SPECIAL MOUNTING | — |
| 10. SPECIAL MOUNTING | — |
| 11. SPECIAL MOUNTING | — |
| 12. SPECIAL MOUNTING | — |
| 13. SPECIAL MOUNTING | — |
| 14. SPECIAL MOUNTING | — |
| 15. SPECIAL MOUNTING | — |
| 16. SPECIAL MOUNTING | — |
| 17. SPECIAL MOUNTING | — |
| 18. SPECIAL MOUNTING | — |
| 19. SPECIAL MOUNTING | — |
| 20. SPECIAL MOUNTING | — |
| 21. SPECIAL MOUNTING | — |
| 22. SPECIAL MOUNTING | — |
| 23. SPECIAL MOUNTING | — |
| 24. SPECIAL MOUNTING | — |
| 25. SPECIAL MOUNTING | — |
| 26. SPECIAL MOUNTING | — |
| 27. SPECIAL MOUNTING | — |
| 28. SPECIAL MOUNTING | — |
| 29. SPECIAL MOUNTING | — |
| 30. SPECIAL MOUNTING | — |
| 31. SPECIAL MOUNTING | — |
| 32. SPECIAL MOUNTING | — |
| 33. SPECIAL MOUNTING | — |
| 34. SPECIAL MOUNTING | — |
| 35. SPECIAL MOUNTING | — |
| 36. SPECIAL MOUNTING | — |
| 37. SPECIAL MOUNTING | — |
| 38. SPECIAL MOUNTING | — |
| 39. SPECIAL MOUNTING | — |
| 40. SPECIAL MOUNTING | — |
| 41. SPECIAL MOUNTING | — |
| 42. SPECIAL MOUNTING | — |
| 43. SPECIAL MOUNTING | — |
| 44. SPECIAL MOUNTING | — |
| 45. SPECIAL MOUNTING | — |
| 46. SPECIAL MOUNTING | — |
| 47. SPECIAL MOUNTING | — |
| 48. SPECIAL MOUNTING | — |
| 49. SPECIAL MOUNTING | — |
| 50. SPECIAL MOUNTING | — |
| 51. SPECIAL MOUNTING | — |
| 52. SPECIAL MOUNTING | — |
| 53. SPECIAL MOUNTING | — |
| 54. SPECIAL MOUNTING | — |
| 55. SPECIAL MOUNTING | — |
| 56. SPECIAL MOUNTING | — |
| 57. SPECIAL MOUNTING | — |
| 58. SPECIAL MOUNTING | — |
| 59. SPECIAL MOUNTING | — |
| 60. SPECIAL MOUNTING | — |
| 61. SPECIAL MOUNTING | — |
| 62. SPECIAL MOUNTING | — |
| 63. SPECIAL MOUNTING | — |
| 64. SPECIAL MOUNTING | — |
| 65. SPECIAL MOUNTING | — |
| 66. SPECIAL MOUNTING | — |
| 67. SPECIAL MOUNTING | — |
| 68. SPECIAL MOUNTING | — |
| 69. SPECIAL MOUNTING | — |
| 70. SPECIAL MOUNTING | — |
| 71. SPECIAL MOUNTING | — |
| 72. SPECIAL MOUNTING | — |
| 73. SPECIAL MOUNTING | — |
| 74. SPECIAL MOUNTING | — |
| 75. SPECIAL MOUNTING | — |
| 76. SPECIAL MOUNTING | — |
| 77. SPECIAL MOUNTING | — |
| 78. SPECIAL MOUNTING | — |
| 79. SPECIAL MOUNTING | — |
| 80. SPECIAL MOUNTING | — |
| 81. SPECIAL MOUNTING | — |
| 82. SPECIAL MOUNTING | — |
| 83. SPECIAL MOUNTING | — |
| 84. SPECIAL MOUNTING | — |
| 85. SPECIAL MOUNTING | — |
| 86. SPECIAL MOUNTING | — |
| 87. SPECIAL MOUNTING | — |
| 88. SPECIAL MOUNTING | — |
| 89. SPECIAL MOUNTING | — |
| 90. SPECIAL MOUNTING | — |
| 91. SPECIAL MOUNTING | — |
| 92. SPECIAL MOUNTING | — |
| 93. SPECIAL MOUNTING | — |
| 94. SPECIAL MOUNTING | — |
| 95. SPECIAL MOUNTING | — |
| 96. SPECIAL MOUNTING | — |
| 97. SPECIAL MOUNTING | — |
| 98. SPECIAL MOUNTING | — |
| 99. SPECIAL MOUNTING | — |
| 100. SPECIAL MOUNTING | — |



VIEW FROM 'R'

VIEW FROM 'L'

VIEW FROM 'Z'

[illegible]

FIELD INDUSTRIES LTD.
32 WILE STONE G.T. ROAD
KUNGLI DISTT. SONCEPAT (M.R.)

SCALE	DATE	TAIL LAMP ASSY.
PART NAME		

PART I
SCALE I

100

AS PER
2 WEEKS

102102

10

、

10

TECH

2

cm	
----	--

50	
100	

05743

十

1000

00000000

00000000

—

AMD

1000

1000

1003

DATE _____

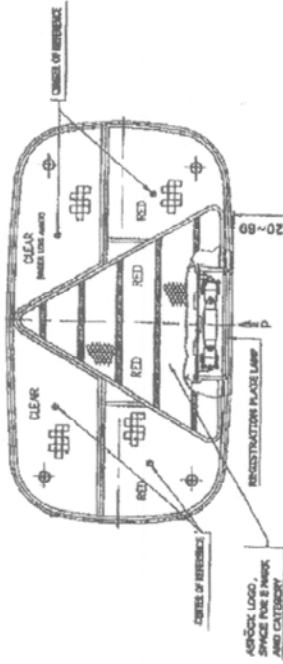
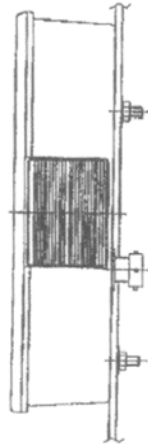
CH ₃	
-----------------	--

 Mod. |

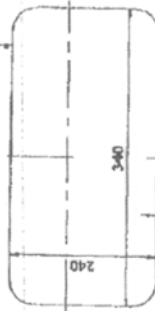
1000

OPTIONS FOR REGISTRATION PLATE/LAMP

OPTION-I



ASPHICK LOGO, SPACE FOR 8 INCHES AND CATEGORY

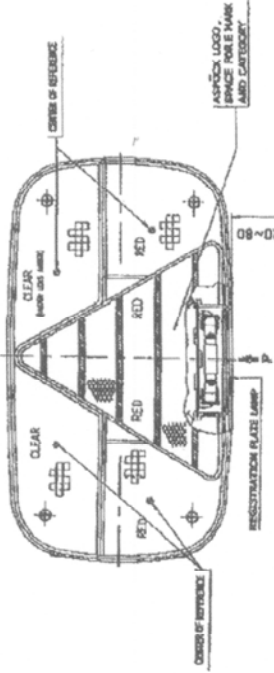
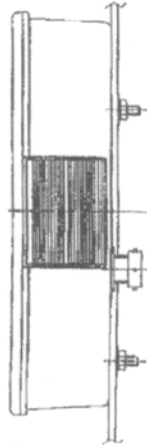


REGISTRATION PLATE
SIZE- 340X240



REGISTRATION PLATE

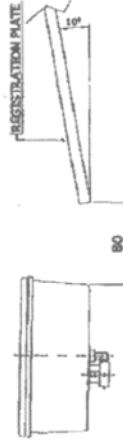
OPTION-II



ASPHICK LOGO, SPACE FOR 8 INCHES AND CATEGORY



REGISTRATION PLATE
SIZE- 520X120



REGISTRATION PLATE

SHEET 4/4

MATL. SPEC.	FINISH	COMPONENT FOR:
		TRAILERS
DIVISIONS ARE IN DRAWN DATE DO NOT SCALE THE DRAWING UNLESS SPECIFIED TO SCALE NEEDS AS PER RS2102 MEDIUM GRADE		
PART NAME	TAIL LAMP ASSY.	MOD. NO. D
DRG. NO.	FMN-3	

FIEM INDUSTRIES LTD.
32 MILE STONE G.I. ROAD
KUNDU DIST. SONPAT (H.P.)

ADD. NO. DATE LOON AMENDMENTS REASON SIG

CHANGE NOTE





RDW

Vehicle Technology Division

THE NETHERLANDS
(NEDERLAND)



COMMUNICATION

Concerning: - APPROVAL GRANTED
- APPROVAL EXTENDED
- APPROVAL REFUSED
- APPROVAL WITHDRAWN
- PRODUCTION DEFINITELY DISCONTINUED

of a type of reversing lamps for motor vehicles and their trailers pursuant to Regulation No. 23

Approval No.: E4-23R-0010661

Extension No.: 01

Approval mark

AR



0010661

- | | |
|---------------------------------------------------------------------|-----------------------------------------------------------------------------------------------------|
| 1. Trade name or mark of the device | : ASPÖCK |
| 2. Manufacturer's name for the type of device | : FMN-3 |
| 3. Manufacturer's name and address | : Fiem Industries Ltd.
32, Mile Stone, G.T. Road,
KUNDLI, Distt. SONEPAT,
HARYANA, INDIA |
| 4. If applicable, name and address of manufacturer's representative | : not applicable |
| 5. Submitted for approval on | : December 20, 2003. |
| 6. Technical service responsible for conducting approval tests | : TÜV Kraftfahrt GmbH
Institute für Verkehrssicherheit
Am Grauen Stein
D-51105 Köln (Poll) |
| 7. Date of test report issued by that service | : August 1, 2004. |
| 8. Number of test report issued by that service | : 89-R23-00797/04 |



P.O. Box 777
2700 AT Zoetermeer
The Netherlands

Tel. +31 (0)79 345 81 43
Fax +31 (0)79 345 80 43
www.rdw.nl

Vehicle Approval and Information

9. Concise description

Number and category(ies) of filament lamp(s) : 1 x P21W

Light source module : yes-/ no

Light source module specific identification code : not applicable

Geometrical conditions of installation and relating variations, if any : Refer the drawing no. FMN-3 SHEET 1/4

10. Position of the approval mark : on the lens

11. Reason(s) for extension (if applicable) : Introduction of supply voltage 24 Volt

12. Approval granted / extended / refused / withdrawn

13. Place : Zoetermeer

14. Date : 19 AUG. 2004

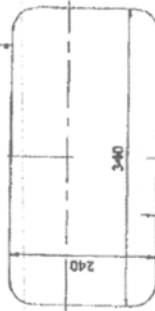
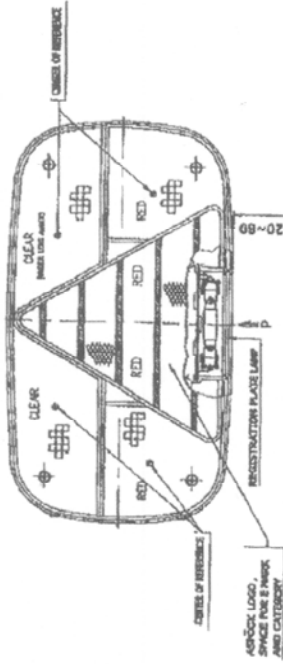
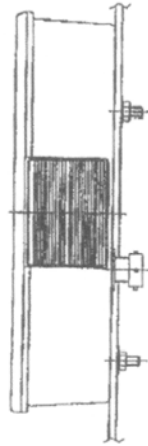


J.C.M. Hoes

16. The list of documents (6 pages) deposited with the Administrative Service which has granted approval is annexed to this communication and may be obtained upon request.

OPTIONS FOR REGISTRATION PLATE/LAMP

OPTION-I

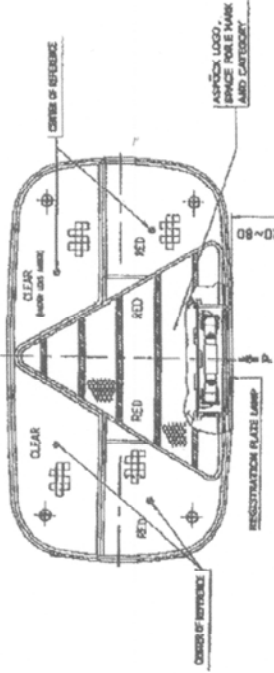
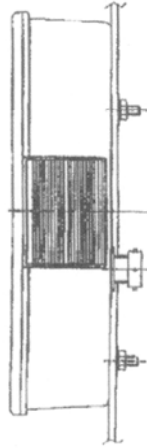


REGISTRATION PLATE
SIZE- 340X240



REGISTRATION PLATE

OPTION-II



REGISTRATION PLATE
SIZE- 520x120



REGISTRATION PLATE

SHEET 4/4

MATL. SPEC.	FINISH	COMPONENT FOR:
		TRAILERS
DIVISIONS ARE IN DRAWN DATE DO NOT SCALE THE DRAWING UNLESS SPECIFIED TO SCALE NEEDS AS PER RS2102 MEDIUM GRADE		
PART NAME	TAIL LAMP ASSY.	MOD. NO. D
DRG. NO.	FMN-3	

ADD. NO.	DATE	LOAN	AMENDMENTS	REASON	SIC
CHANGE NOTE					





RDW

Vehicle Technology Division

THE NETHERLANDS
(N E D E R L A N D)



COMMUNICATION

Concerning: - APPROVAL GRANTED
- APPROVAL EXTENDED
- APPROVAL REFUSED
- APPROVAL WITHDRAWN
- PRODUCTION DEFINITELY DISCONTINUED

of a type of rear fog lamps for motor vehicles and their trailers pursuant to Regulation No. 38

Approval No.: E4-38R-0010661

Extension No.: 01

Approval mark

F



0010661

1. Trade name or mark of the device : ASPÖCK
2. Manufacturer's name for the type of device : FMN-3
3. Manufacturer's name and address : Fiem Industries Ltd.
32, Mile Stone, G.T. Road,
KUNDLI, Distt. SONEPAT,
HARYANA, INDIA
4. If applicable, name and address of
manufacturer's representative : not applicable
5. Submitted for approval on : December 20, 2003.
6. Technical service responsible for conducting
approval tests : TÜV Kraftfahrt GmbH
Institut für Verkehrssicherheit
Am Grauen Stein
D-51105 Köln (Poll)
7. Date of test report issued by that service : August 1, 2004
8. Number of test report issued by that service : 89-R38-00796/04



P.O. Box 777
2700 AT Zoetermeer
The Netherlands

Tel. +31 (0)79 345 81 43
Fax +31 (0)79 345 80 43
www.rdw.nl

Vehicle Approval and Information

9. Concise description

Number and category(ies) of filament lamp(s) : 1 x P21W

Light source module : yes/ no

Light source module specific identification code : not applicable

Geometrical conditions of installation and relating variations, if any : Refer the drawing no. FMN-3 SHEET 1/4

10. Position of the approval mark : on the lens

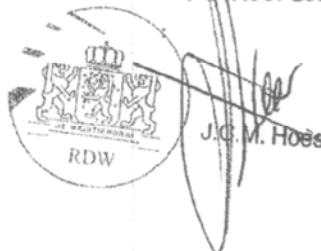
11. Reason(s) for extension (if applicable) : Introduction of supply voltage 24 Volt

12. Approval granted / extended / refused / withdrawn

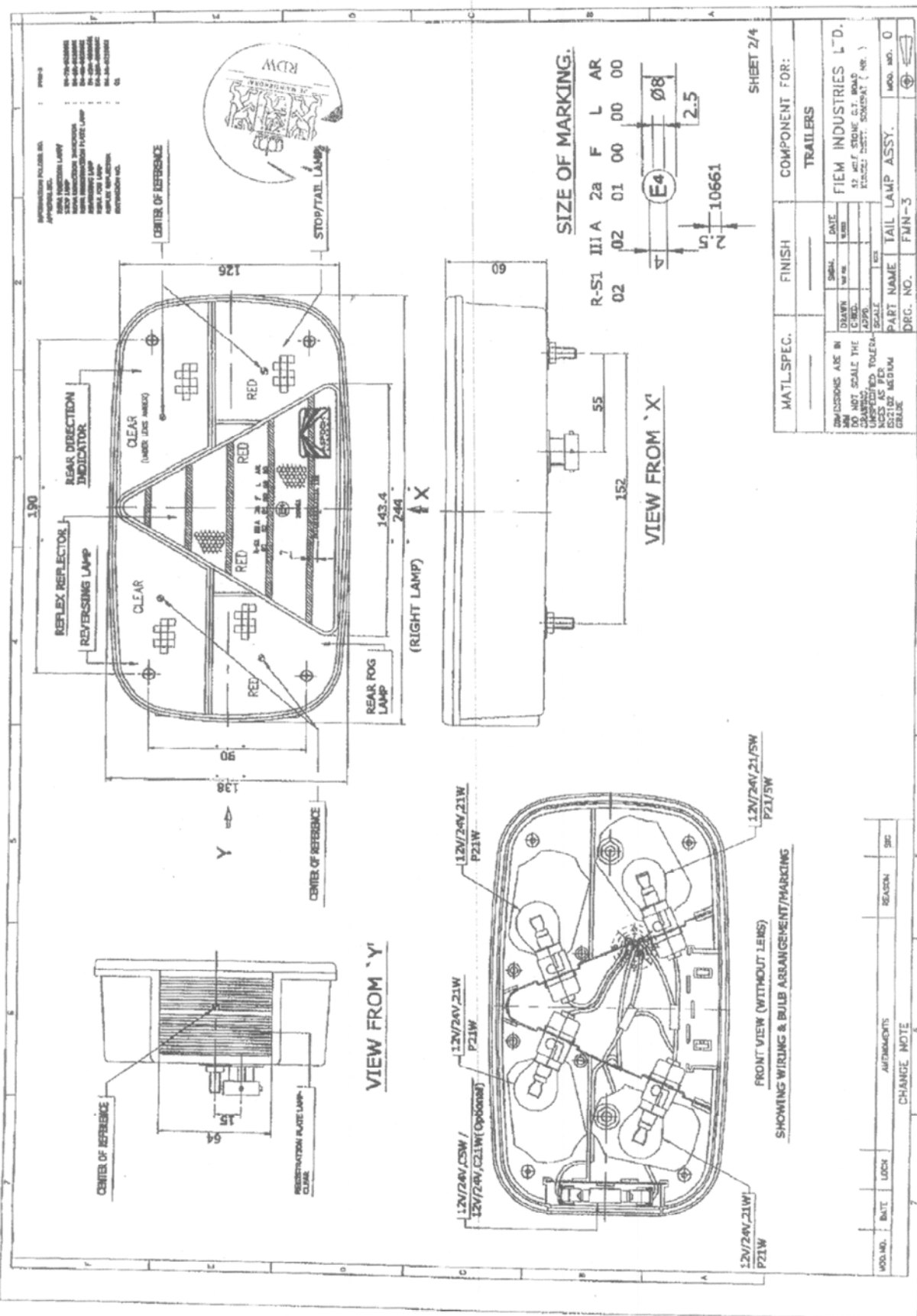
13. Place : Zoetermeer

14. Date : 18 AUG. 2004

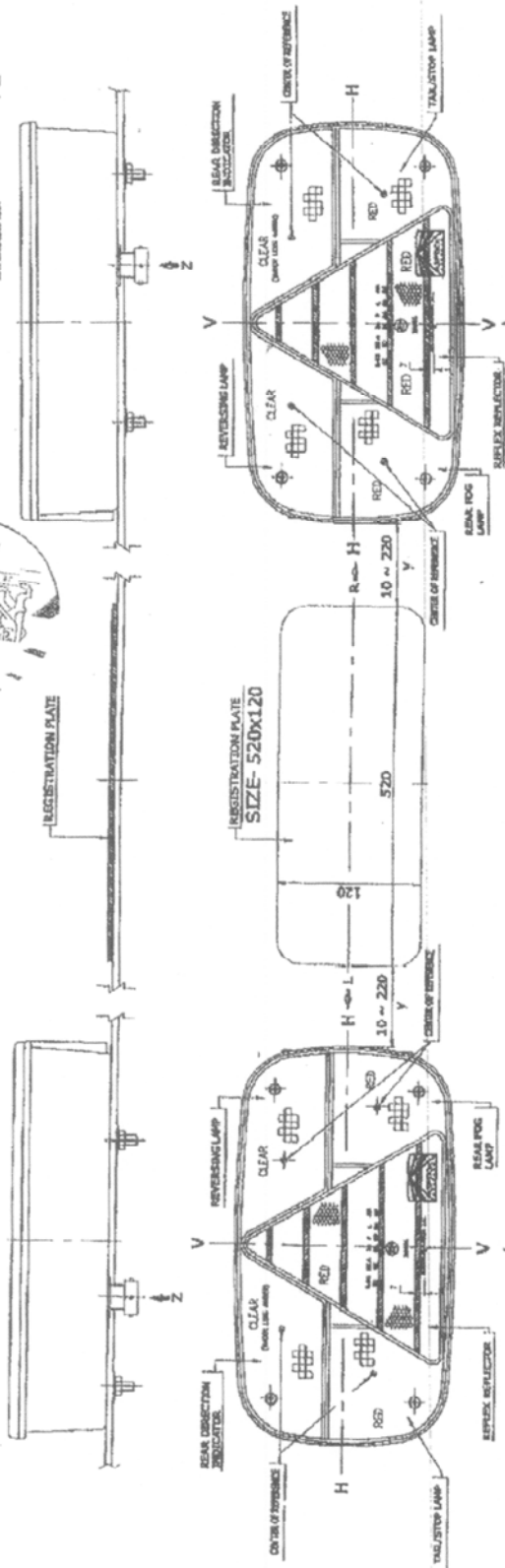
15. Signature

The signature of J.C.M. Hoës is written in black ink over a circular stamp. The stamp contains the RDW logo, which features a crown and two lions, with the text 'RDW' below it.

16. The list of documents (6 pages) deposited with the Administrative Service which has granted approval is annexed to this communication and may be obtained upon request.

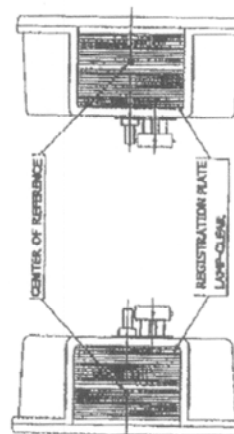


INFORMATION FOLDER NO.	64-79-0210661	79-2
APPROVAL NO.	64-48-0210661	
REAL POSITION LAMP	64-48-0210661	
STOP LAMP	64-48-0210661	
REAL DIRECTION INDICATOR	64-48-0210661	
REAL REGISTRATION PLATE LAMP	64-48-0210661	
REVERSE LAMP	64-48-0210661	
REAL POC LAMP	64-48-0210661	
REFLEX REFLECTOR	64-48-0210661	
EXTENSION NO.	01	



NOTE:-

- [illegible]



VIEW FROM 'R'

VIEW FROM 'L'

VIEW FROM 'Z'

[illegible]

FIELD INDUSTRIES LTD.
32 WILE STONE G.T. ROAD
KUNGLI DISTT. SONCEPAT (M.R.)

SCALE	DATE	TAIL LAMP ASSY.
PART NAME		

PART I
SCALE I

100

AS PER
2 WEEKS

102102

10

、

10

TECH

2

cm	
----	--

50	
100	

057136

十

0

00000000

00000000

—

AMD

1000

1000

1003

DATE _____

CH ₃	
-----------------	--

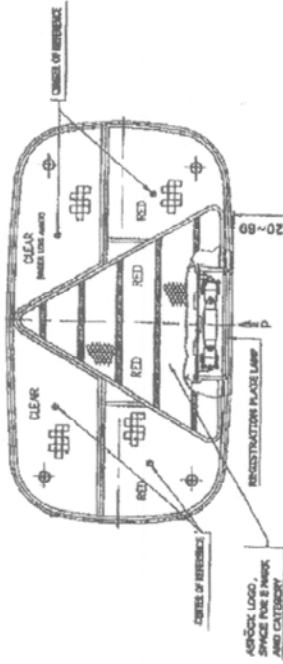
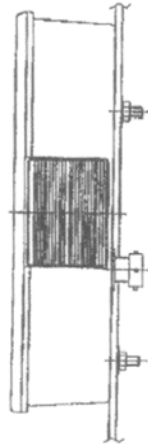
 1000 |

1000

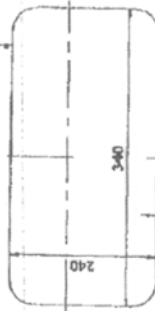
1

OPTIONS FOR REGISTRATION PLATE/LAMP

OPTION-I



ASPHALT LOGO, SPACE FOR 8 INCHES AND CATEGORY

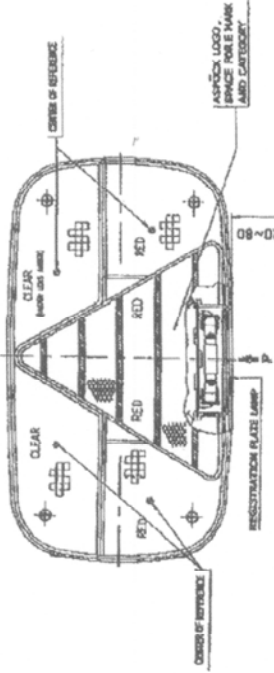
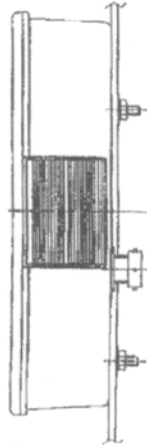


REGISTRATION PLATE
SIZE- 340X240



REGISTRATION PLATE

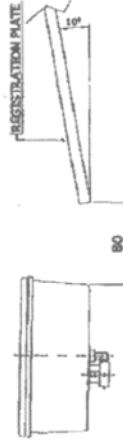
OPTION-II



ASPHALT LOGO, SPACE FOR 8 INCHES AND CATEGORY



REGISTRATION PLATE
SIZE- 520X120



REGISTRATION PLATE

SHEET 4/4

MATL. SPEC.	FINISH	COMPONENT FOR:
		TRAILERS
DIVISIONS ARE IN DRAWN DATE DO NOT SCALE THE DRAWING UNLESS SPECIFIED TO SCALE NEEDS AS PER RS2102 MEDIUM GRADE		
PART NAME	TAIL LAMP ASSY.	MOD. NO. D
DRG. NO.	FMN-3	

FIEM INDUSTRIES LTD.
32 MILE STONE G.I. ROAD
KUNDU DISTT. SONPAT (H.P.)

ADD. NO. DATE LOON REASON SIG
AMENDMENTS
CHANGE NOTE





RDW

Vehicle Technology Division

THE NETHERLANDS
(N E D E R L A N D)



COMMUNICATION

Concerning: - APPROVAL GRANTED
- APPROVAL EXTENDED
- APPROVAL REFUSED
- APPROVAL WITHDRAWN
- PRODUCTION DEFINITELY DISCONTINUED

of a type of devices for the illumination of rear registration plates of motor vehicles (except motor cycles)
and their trailers pursuant to Regulation No. 4

Approval No.: E4-4R-0010661

Extension No.: 01

Approval mark

L - 00



10661

- | | | |
|----|---------------------------------------------------------------------|----------------------------------------------------------------------------------------------------|
| 1. | Trade name or mark of the device | : ASPÖCK |
| 2. | Manufacturer's name for the type of device | : FMN-3 |
| 3. | Manufacturer's name and address | : Fiem Industries Ltd.
32, Mile Stone, G.T. Road,
KUNDLI, Distt. SONEPAT,
HARYANA, INDIA |
| 4. | If applicable, name and address of
manufacturer's representative | : not applicable |
| 5. | Submitted for approval on | : December 20, 2003. |
| 6. | Technical service responsible for conducting
approval tests | : TÜV Kraftfahrt GmbH
Institut für Verkehrssicherheit
Am Grauen Stein
D-51105 Köln (Poll) |
| 7. | Date of report issued by that service | : August 1, 2004. |
| 8. | Number of report issued by that service | : 89-R4-00798/04 |



P.O. Box 777
2700 AT Zoetermeer
The Netherlands

Tel. +31 (0)79 345 81 43
Fax +31 (0)79 345 80 43
www.rdw.nl

Vehicle Approval and Information

9. Concise description

Device for illuminating : a tall plate
a wide plate
a plate for agricultural or forestry tractors

Number and category(ies) of filament lamp(s) : 2 x C5W or 1x C21W

Light source module : yes / no

Light source module specific identification code : not applicable

Geometrical conditions of installation (position(s) and inclination(s) of the device in relation to the space to be occupied by the registration plate and /or different inclinations of this space) : Refer the drawing no. FMN-3 SHEET 1/4

10. Position of the approval mark : on the lens

11. Reason(s) for extension (if applicable) : Introduction of supply voltage 24 Volt

12. Approval granted / extended / refused / withdrawn

14. Date

Zoetermeer

19 AUG 2004

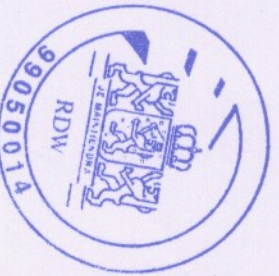
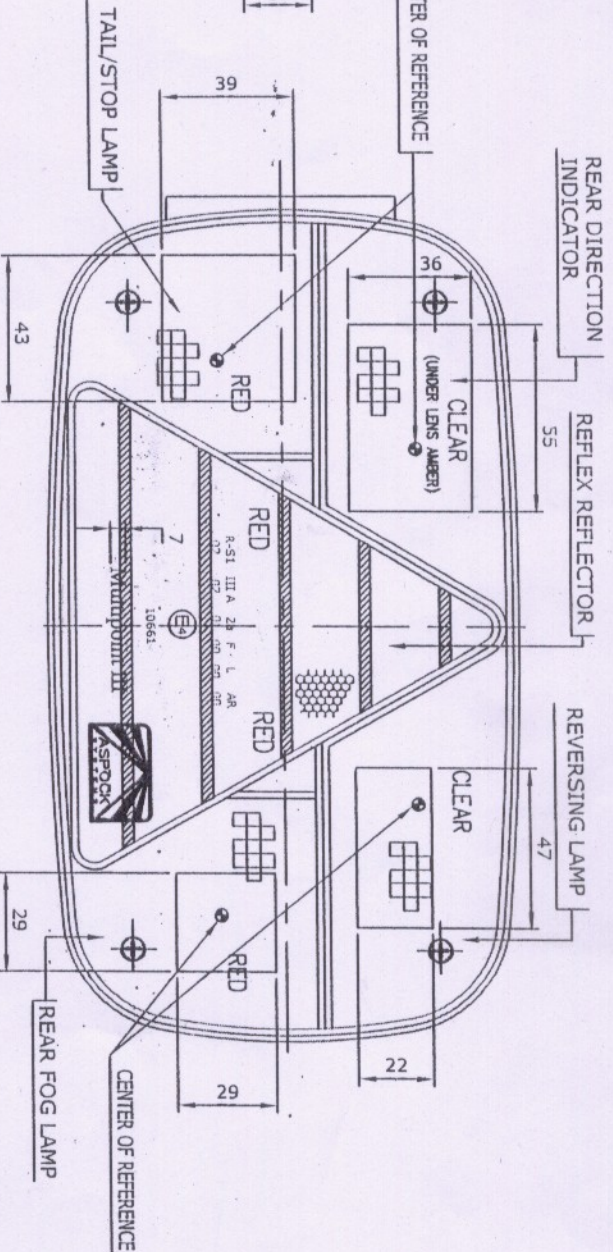


J.C.M. Hoes

16. The list of documents (6 pages) deposited with the Administrative Service which has granted approval is annexed to this communication and may be obtained upon request.

EMM-3 (EVT)



E4-7R-0210661 Ext 01
E4-6R-0110661 Ext 01
E4-38R-0010661 Ext 01
E4-23R-0010661 Ext 01
E4-4R-0010661 Ext 01
E4-3R-0210661 Ext 02
E4-91R-0010661 Ext 00

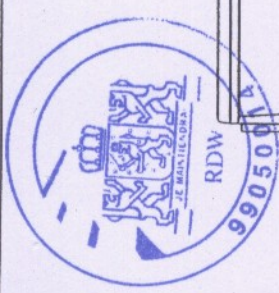


ANNEXURE-1

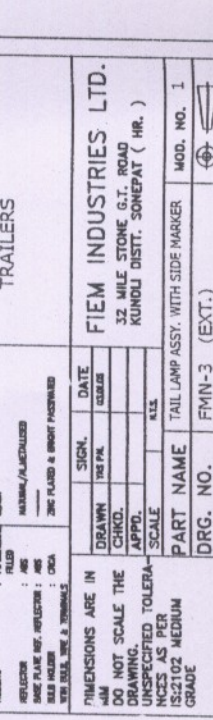
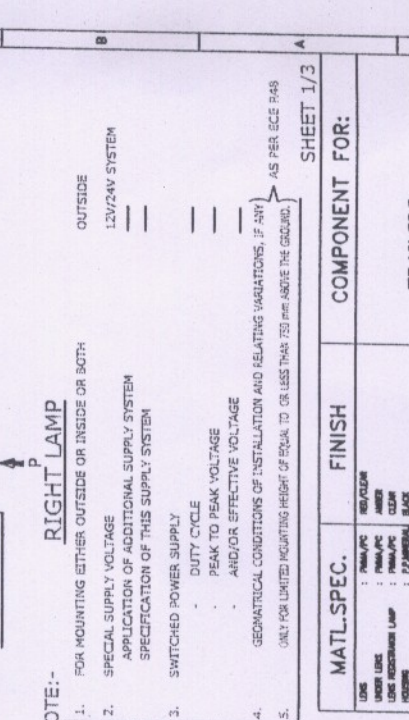
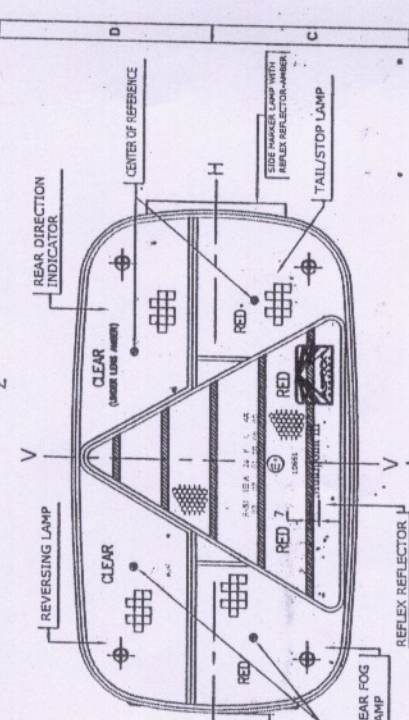
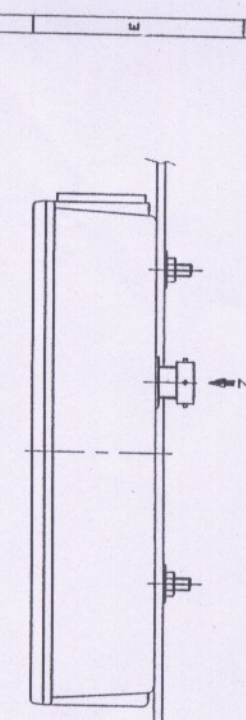
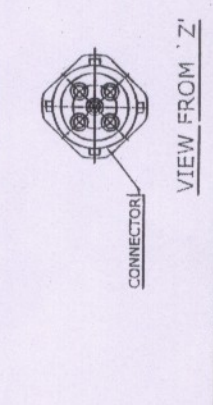
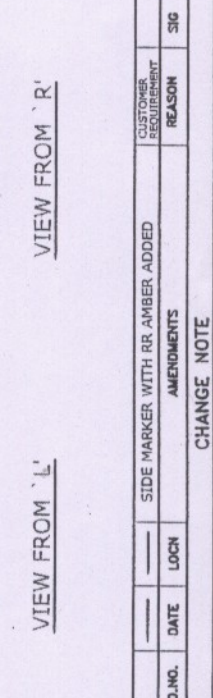
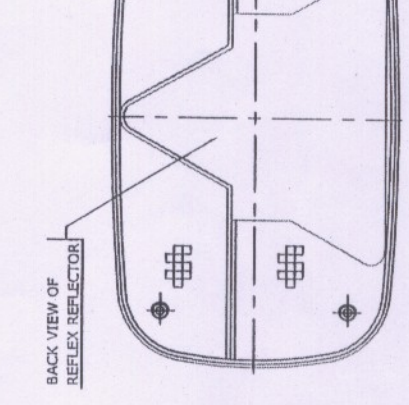
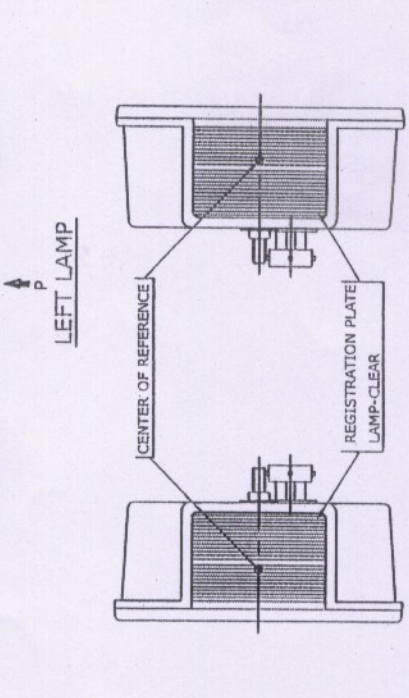
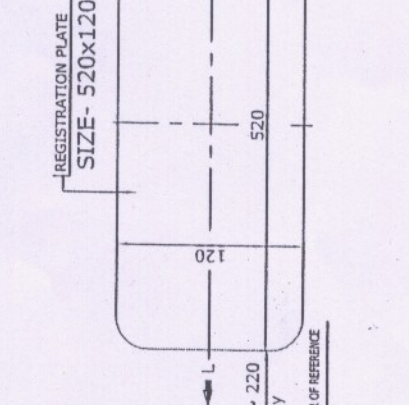
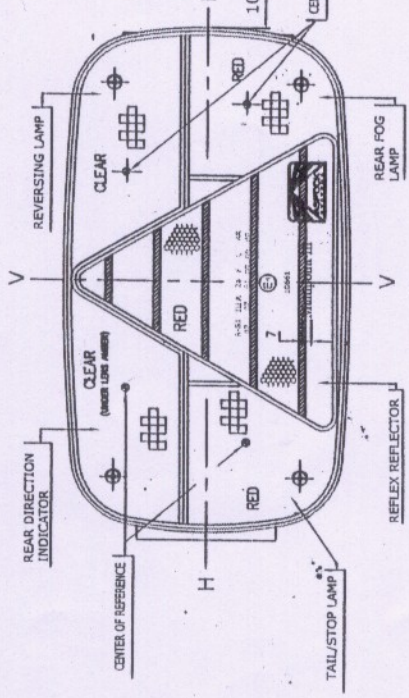
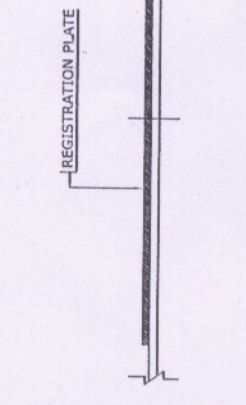
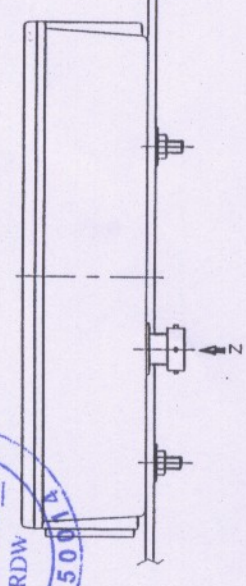
MOD.NO.	DATE	LOGN	SIDE MARKER WITH RR AMBER ADDED AMENDMENTS	CUSTOMER REQUIREMENT	SIG
1					

CHANGE NOTE

MATL.SPEC.		FINISH		COMPONENT FOR:	
_____		_____		TRAILERS	
DIMENSIONS ARE IN MM DO NOT SCALE THE DRAWING. UNSPECIFIED TOLER- ANCES AS PER IS:2102 MEDIUM GRADE				FIEM INDUSTRIES LTD. 32 MILE STONE G.T.K. ROAD KUNDLI DISTT. SONEPAT (HR.)	
DRAWN		SIGN.		DATE	
CHKD.		V/S P/L		03.01.05	
APPD.					
SCALE				N.T.S.	
PART NAME		TAIL LAMP ASSY. WITH SIDE MARKER			
DRG. NO.		FMN-3 (EXT.)		MOD. NO. 1	
					



ASSEMBLY INSTRUCTION
VIEW FROM 'P'




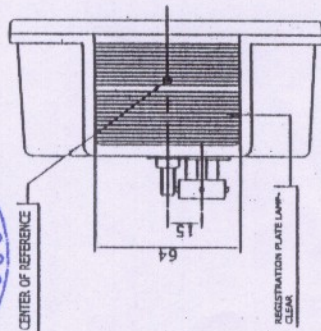
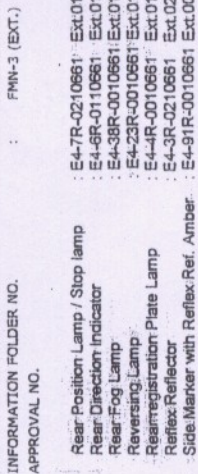
INFORMATION FOLDER NO. APPROVAL NO. FMN-3 (EXT.)

E4-TR-0210661 Ex.01
E4-GR-0110661 Ex.01
E4-3R-0010661 Ex.01
E4-3R-0010661 Ex.01
E4-3R-0010661 Ex.01
E4-3R-0010661 Ex.01
E4-3R-0010661 Ex.01
E4-3R-0010661 Ex.01
E4-3R-0010661 Ex.01
E4-3R-0010661 Ex.01

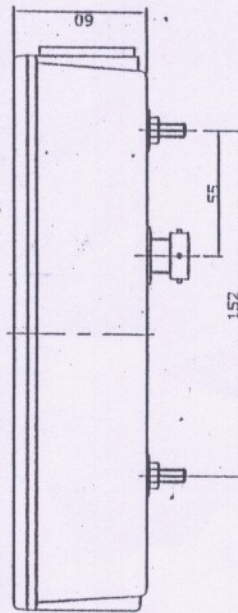
Rear Position Lamp / Stop lamp
Rear Direction Indicator
Reversing Lamp
Rear Registration Plate Lamp
Rear Fog Lamp
Side Marker with Reflex Ref. Amber
Side Marker with Reflex Ref. Amber

- NOTE:-
- FOR MOUNTING EITHER OUTSIDE OR INSIDE OR BOTH
 - SPECIAL SUPPLY VOLTAGE
APPLICATION OF ADDITIONAL SUPPLY SYSTEM
SPECIFICATION OF THIS SUPPLY SYSTEM
 - SWITCHED POWER SUPPLY
DUTY CYCLE
PEAK TO PEAK VOLTAGE
AND/OR EFFECTIVE VOLTAGE
 - GEOMETRICAL CONDITIONS OF INSTALLATION AND RELATING VARIATIONS, IF ANY
 - ONLY FOR LIMITED MOUNTING HEIGHT OF EQUAL TO OR LESS THAN 750 mm ABOVE THE GROUND, AS PER RULE 74B

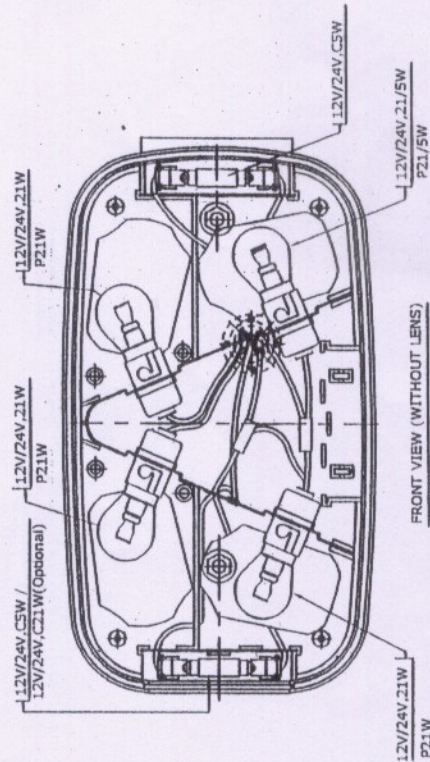
MATL.SPEC.				FINISH		COMPONENT FOR:					
LINE	REMARKS	REMARKS	REMARKS	REMARKS	REMARKS	TRAILERS					
UNDER LENS	FINISH/PC	FINISH/PC	FINISH/PC	FINISH/PC	FINISH/PC						
UNDER LENS	FINISH/PC	FINISH/PC	FINISH/PC	FINISH/PC	FINISH/PC						
UNDER LENS	FINISH/PC	FINISH/PC	FINISH/PC	FINISH/PC	FINISH/PC						
REMARKS	REMARKS	REMARKS	REMARKS	REMARKS	REMARKS	TRAILERS					
REMARKS	REMARKS	REMARKS	REMARKS	REMARKS	REMARKS						
REMARKS	REMARKS	REMARKS	REMARKS	REMARKS	REMARKS						
REMARKS	REMARKS	REMARKS	REMARKS	REMARKS	REMARKS						
DIMENSIONS ARE IN				DATE		FIEM INDUSTRIES LTD. 32 MILE STONE 6.7, ROAD KUNDLI DISTT. SONEPAT (HR.)					
DO NOT SCALE THE				DRAWN				MOD. NO. 1			
DRAWING				CHKD.						TAIL LAMP ASSY. WITH SIDE MARKER	
UNSPECIFIED TOLERANCES AS PER				APPD.							
IS:2102 MEDIUM GRADE				SCALE							
				SIGNAL							
				THE PA							
				LARGE							



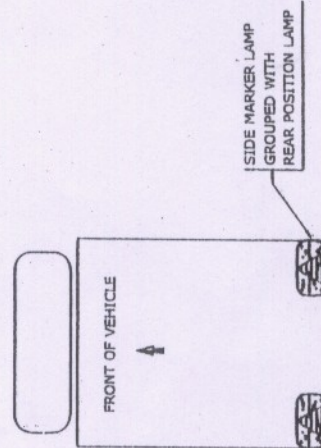
VIEW FROM 'Y'



VIEW FROM 'X'



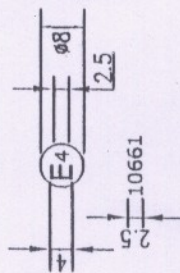
FRONT VIEW (WITHOUT LENS)
SHOWING WIRING & BULB ARRANGEMENT/MARKING



INSTALLATION VIEW

SIZE OF MARKING.

R-SI	III A	2a	F	L	AR
02	02	01	00	00	00



SHEET 2/3

MATL. SPEC.	FINISH	COMPONENT FOR:
_____		TRAILERS
DIMENSIONS ARE IN INCHES DO NOT SCALE THE DRAWING. UNDESIGNED TOLER- ANCES ARE PER AS212102 MEDIUM GRADE		
DRAWING CHKD. APPD. SCALE	-SIGN. TAIL NO. DATE CLEARD	FIEM INDUSTRIES LTD. 32 MILE STONE G.T. ROAD KUNDLI DISTT. SONENPAT (HR.)
PART NAME TAIL LAMP ASSY. WITH SIDE MARKER MOD. NO. 1 DRG. NO. FMN-3 (EXT.)		

CHANGE NOTE			
AMOUNT	DATE	LOCN	AMENDMENTS
1	---	---	SIDE MARKER WITH RR AMBER ADDED
			CUSTOMER REQUIREMENT
			REASON
			SIC

CHANGE NOTE



RDW

Vehicle Technology Division

THE NETHERLANDS
(N E D E R L A N D)



COMMUNICATION

Concerning: - APPROVAL GRANTED
- ~~APPROVAL EXTENDED~~
- ~~APPROVAL REFUSED~~
- ~~APPROVAL WITHDRAWN~~
- ~~PRODUCTION DEFINITELY DISCONTINUED~~

of a type of side marker lamp pursuant to Regulation No. 91

Approval No.: E4-91R-0010661

Extension No.: 00

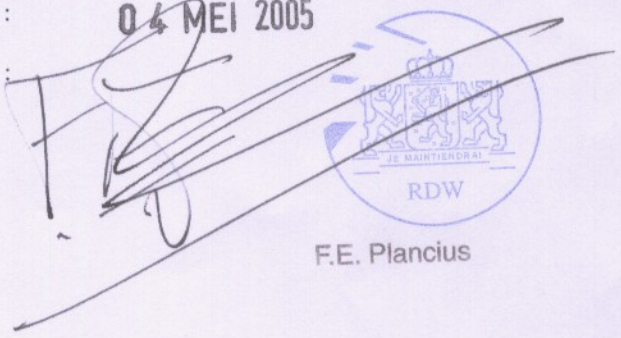
Approval mark

00 SM1



10661

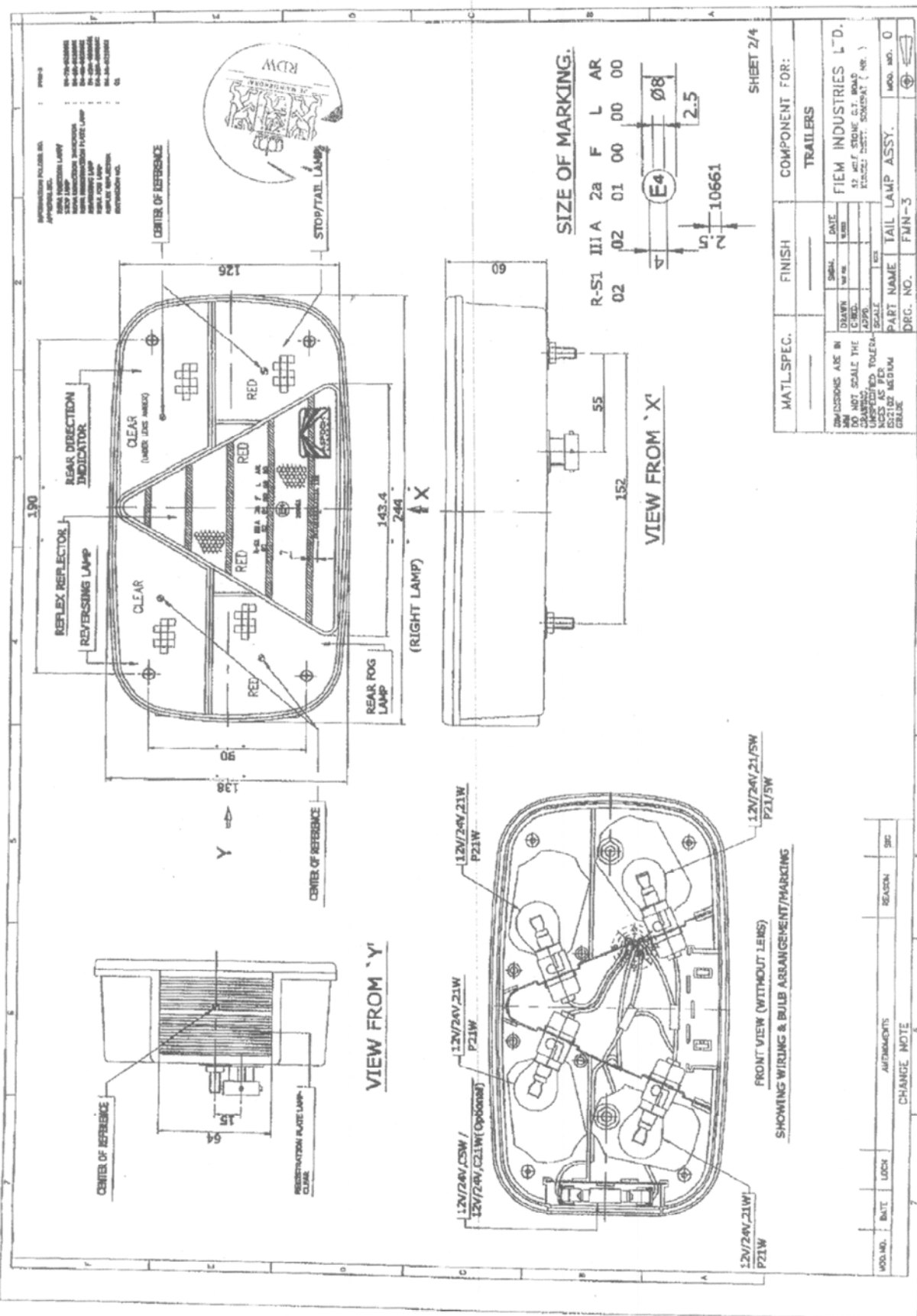
- | | | |
|----|------------------------------------------------------------------|-----------------------------------------------------------------------------------------------------|
| 1. | Trade name or mark of the device | : ASPÖCK |
| 2. | Manufacturer's name for the type of device | : FMN-3 |
| 3. | Manufacturer's name and address | : Fiem Industries Ltd.
32, Mile Stone, G.T. Road,
KUNDLI, Distt. SONEPAT,
HARYANA, INDIA |
| 4. | If applicable, name and address of manufacturer's representative | : not applicable |
| 5. | Submitted for approval on | : January 21, 2005 |
| 6. | Technical service responsible for conducting approval tests | : TÜV Kraftfahrt GmbH
Institute für Verkehrssicherheit
Am Grauen Stein
D-51105 Köln (Poll) |
| 7. | Date of test report issued by that service | : March 15, 2005. |
| 8. | Number of test report issued by that service | : 89-R91-01000/05 |

9. Concise description :
Colour of light emitted : ~~red~~/ amber
Number and category(ies) of filament lamp(s) : 1 x C5W
Light source module : yes-/ no
Light source module specific identification code : not applicable
Geometrical conditions of installation and relating variations, if any : Refer the drawing no. FMN-3 (EXT.) Sheet 1 of 3 to 3 of 3
10. Position of the approval mark : on the lens
11. Reason(s) for extension (if applicable) : not applicable
12. Approval : granted / ~~extended~~ / ~~refused~~ / ~~withdrawn~~
13. Place : Zoetermeer
14. Date : 04 MEI 2005
15. Signature : 

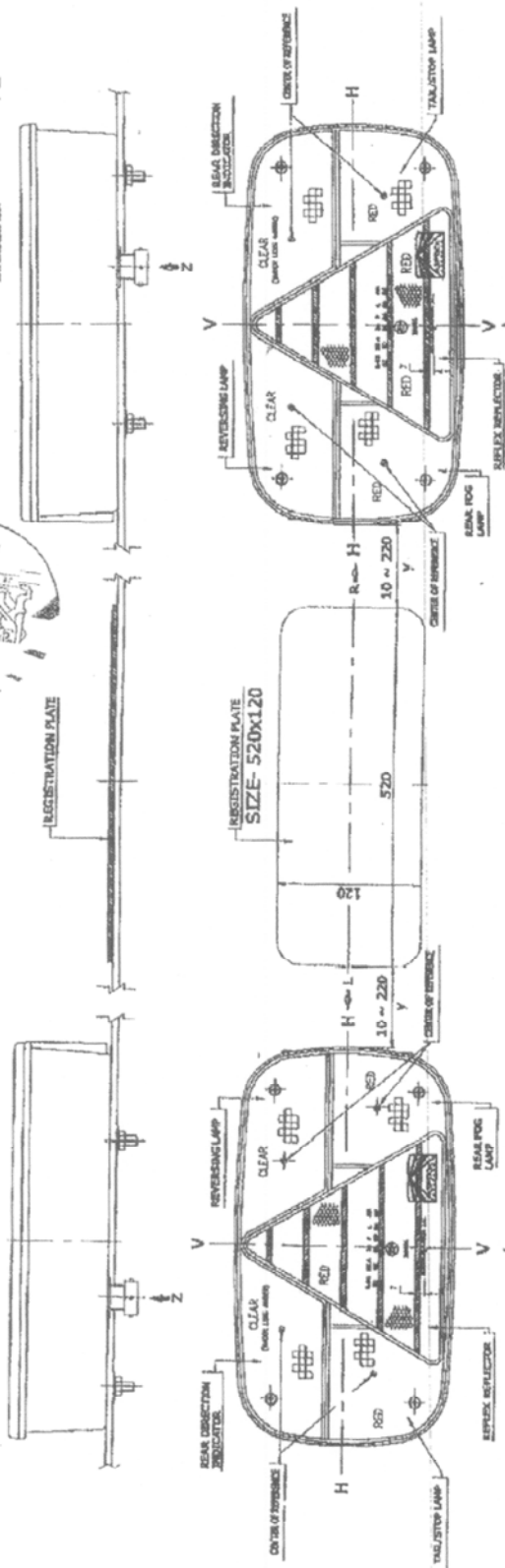


F.E. Plancius

16. The list of documents (5 pages) deposited with the Administrative Service which has granted approval is annexed to this communication and may be obtained on request.

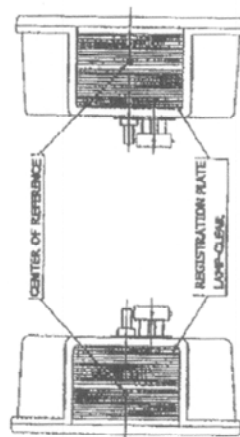
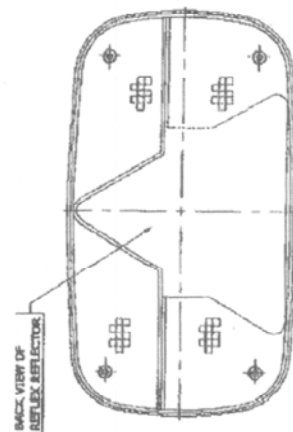


INFORMATION FOLDER NO.		PW-3
APPROVAL NO.		
REAL POSITION LAMP		64-79-0220661
STOP LAMP		64-80-0220661
REAR DEFLECTION INDICATOR		64-80-0220661
REAR REGISTRATION PLATE LAMP		64-80-0220661
REVERSE LAMP		64-80-0220661
REAL POG LAMP		64-80-0220661
REFLEX REFLECTOR		64-80-0220661
EXTENSION NO.		01



NOTE:-

- [illegible]



VIEW FROM 'R'



VIEW FROM 'Z'

[illegible]

FIELD INDUSTRIES LTD.
32 WILE STONE C.T. ROAD
KUN-DU DIST. SONAZAT (HZ.)

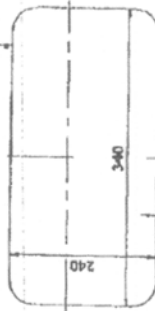
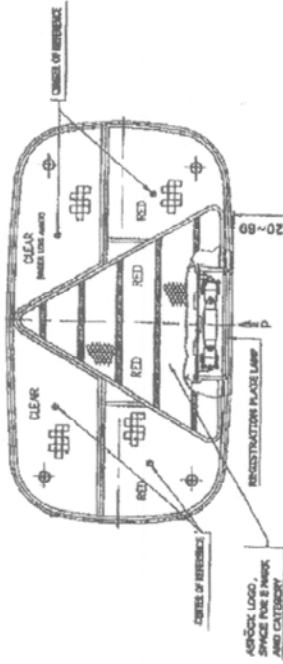
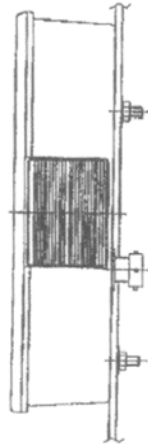
PART NAME	TAIL LAMP ASSY.
1	1

100. 110. 120.

100. 110. 120.

OPTIONS FOR REGISTRATION PLATE/LAMP

OPTION-I

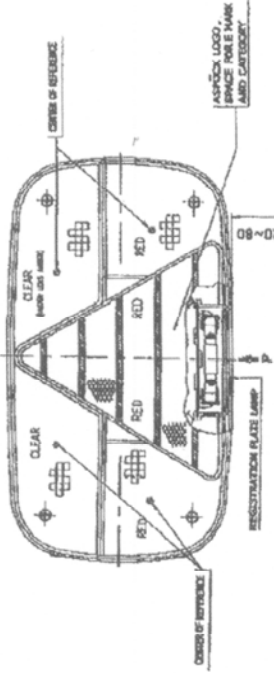
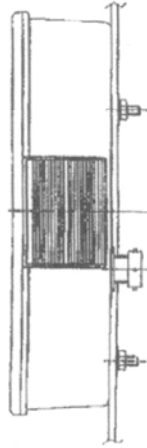


REGISTRATION PLATE
SIZE- 340X240



REGISTRATION PLATE

OPTION-II



REGISTRATION PLATE
SIZE- 520X120



REGISTRATION PLATE

SHEET 4/4

MATL. SPEC.	FINISH	COMPONENT FOR:
		TRAILERS
DIVISIONS ARE IN DRAWN DATE DO NOT SCALE THE DRAWING UNLESS SPECIFIED TO SCALE NEEDS AS PER RS2102 MEDIUM GRADE		
PART NAME	TAIL LAMP ASSY.	MOD. NO. D
DRG. NO.	FMN-3	

ADD. NO.	DATE	LOCN	AMENDMENTS	REASON	SIC
CHANGE NOTE					





RDW

Vehicle Technology Division

THE NETHERLANDS
(NEDERLAND)



COMMUNICATION

Concerning: - APPROVAL GRANTED
- APPROVAL EXTENDED
- APPROVAL REFUSED
- APPROVAL WITHDRAWN
- PRODUCTION DEFINITELY DISCONTINUED

of a type of direction indicators for motor vehicles and their trailers pursuant to Regulation No. 6

Approval No.: E4-6R-0110661

Extension No.: 01

Approval mark

2a



0110661

- | | | |
|----|---------------------------------------------------------------------|----------------------------------------------------------------------------------------------------|
| 1. | Trade name or mark of the device | : ASPÖCK |
| 2. | Manufacturer's name for the type of device | : FMN-3 |
| 3. | Manufacturer's name and address | : Fiem Industries Ltd.
32, Mile Stone, G.T. Road,
KUNDLI, Distt. SONEPAT,
HARYANA, INDIA |
| 4. | If applicable, name and address of
manufacturer's representative | : not applicable |
| 5. | Submitted for approval on | : December 20, 2003. |
| 6. | Technical service responsible for conducting
approval tests | : TÜV Kraftfahrt GmbH
Institut für Verkehrssicherheit
Am Grauen Stein
D-51105 Köln (Poll) |
| 7. | Date of test report issued by that service | : August 1, 2004. |
| 8. | Number of test report issued by that service | : 89-R6-00795/04 |



P.O. Box 777
2700 AT Zoetermeer
The Netherlands

Tel. +31 (0)79 345 81 43
Fax +31 (0)79 345 80 43
www.rdw.nl

Vehicle Approval and Information

Approval No.: E4-6R-0110661

Extension No.: 01

9. Concise description

Category : 1/-1a/-1b/2a/2b/3/4/5/6
Number and category of filament lamp(s) : 1 x P21W
Light source module : yes / no
Light source module specific identification code : not applicable
Only for limited mounting height of equal to or less than 750mm above the ground : yes / no
Geometrical conditions of installation and relating variations, if any : Refer the drawing no. FMN-3 SHEET 1/4

10. Position of the approval mark : on the lens

11. Reason(s) for extension (if applicable) : Introduction of supply voltage 24 Volt

12. Approval ~~granted~~ / extended / ~~refused~~ / withdrawn

13. Place : Zoetermeer

14. Date : 19 AUG. 2004

15. Signature



J.C.M. Hoes

16. The list of documents (6 pages) deposited with the Administrative Service which has granted approval is annexed to this communication and may be obtained upon request.

5

4

3

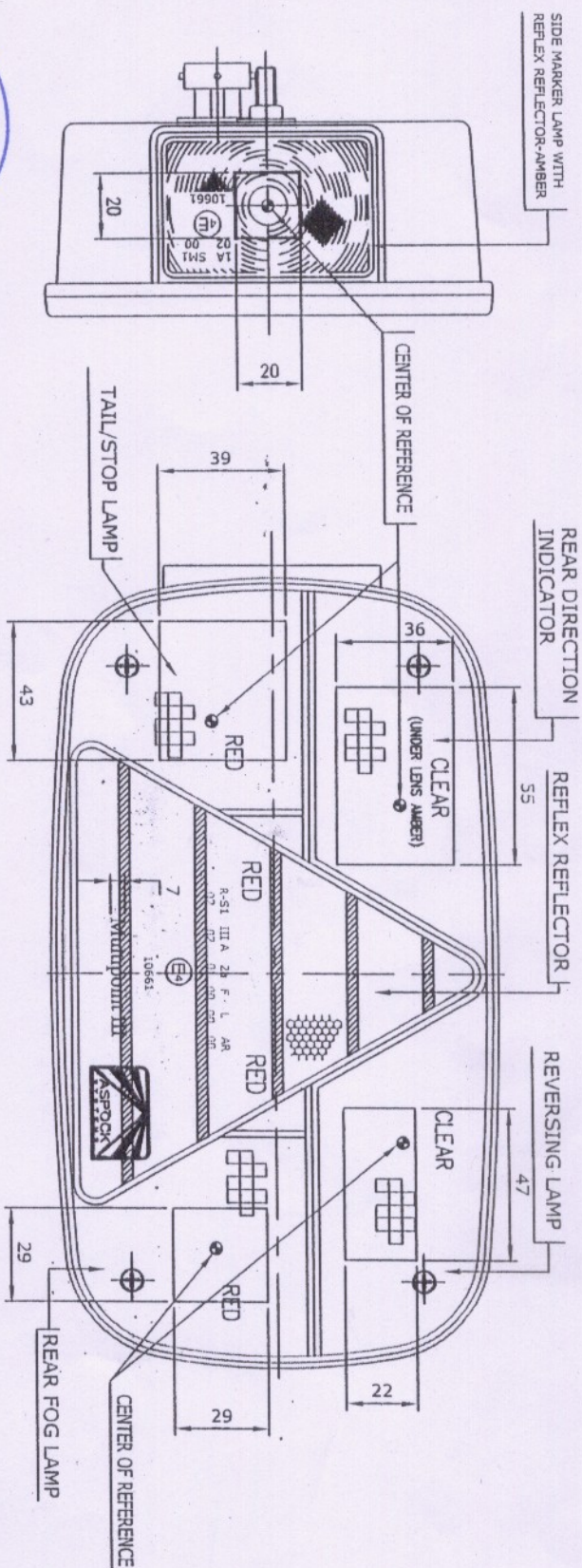
2

INFORMATION FOLDER NO.
APPROVAL NO.

FMN-3 (EXT.)

Rear Position Lamp / Stop lamp
Rear Direction Indicator
Rear Fog Lamp
Reversing Lamp
Registration Plate Lamp
Rear Reflector
Side Marker with Reflex Ref. Amber

E4-7R-0210561: Ex.01
E4-8R-0110561: Ex.01
E4-3R-0010561: Ex.01
E4-2R-0010561: Ex.01
E4-4R-0010561: Ex.01
E4-3R-0210561: Ex.02
E4-91R-0010561: Ex.00



ANNEXURE-1

MOD. NO.	DATE	LOCN	AMENDMENTS	CUSTOMER REQUIREMENT	REASON	SIG
1			SIDE MARKER WITH RR AMBER ADDED			

CHANGE NOTE

MATL.SPEC.

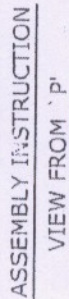
FINISH

COMPONENT FOR:

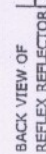
TRAILERS

DIMENSIONS ARE IN MM
DO NOT SCALE THE DRAWING.
UNSPECIFIED TOLERANCES AS PER IS:2102 MEDIUM GRADE

PART NAME	SCALE	DRG. NO.	FMN-3 (EXT.)	MOD. NO. 1
FIEM INDUSTRIES LTD. 32 MILE STONE G.T.K. ROAD KUNDU DIST. SONEPAT (HR.)	N/S			

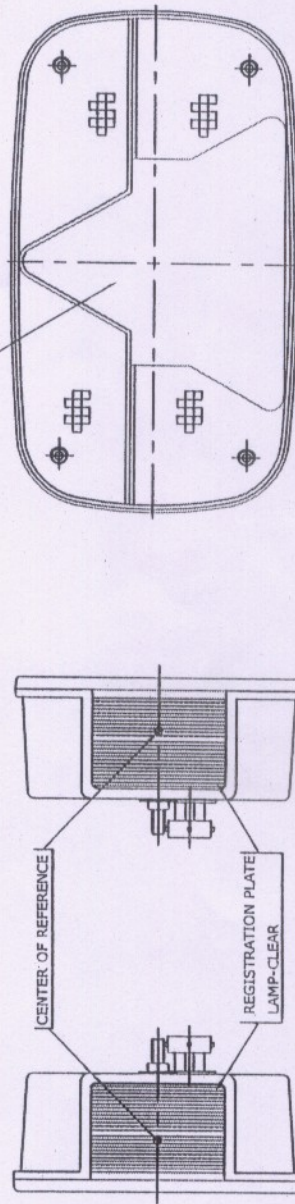


INFORMATION FOLDER NO.	APPROVAL NO.	PMW-3 (EXT.)
Rear Position Lamp / Stop Lamp	E4-7R-0210681	Ext.01
Rear Direction Indicator	E4-0R-0100681	Ext.01
Rear Fog Lamp	E4-3R-0100681	Ext.01
Reversing Lamp	E4-23R-0210681	Ext.01
Rear registration Plate Lamp	E4-4R-0010691	Ext.01
Reflex Reflector *	E4-4R-0210691	Ext.02
Side Marker with Reflex Ref. Amber	E4-91R-0100691	Ext.00



NOTE:-

- | | | |
|----|------------------------------------------------------------------------------------|-----------------|
| 1. | FOR MOUNTING EITHER OUTSIDE OR INSIDE OR BOTH | OUTSIDE |
| 2. | SPECIAL SUPPLY VOLTAGE | 12V/24V SYSTEM |
| | APPLICATION OF ADDITIONAL SUPPLY SYSTEM | — |
| | SPECIFICATION OF THIS SUPPLY SYSTEM | — |
| 3. | SWITCHED POWER SUPPLY | — |
| | DUTY CYCLE | — |
| | PEAK TO PEAK VOLTAGE | — |
| | AND/OR EFFECTIVE VOLTAGE | — |
| 4. | GEOMETRICAL CONDITIONS OF INSTALLATION AND RELATING VARIATIONS, IF ANY | AS PER SIZE R48 |
| | ONLY FOR LIMITED MOUNTING HEIGHT OF EQUAL TO OR LESS THAN 750 MM ABOVE THE GROUND. | |



CONNECTOR

VIEW FROM 'R'

VIEW FROM 'L'

1		DATE	LOCN	SIDE MARKER WITH RR AMBER ADDED		CUSTOMER REQUIREMENT	SIG
MOD. NO.		DATE		AMENDMENTS		REASON	SIG
CHANGE NOTE							

CONNECTOR

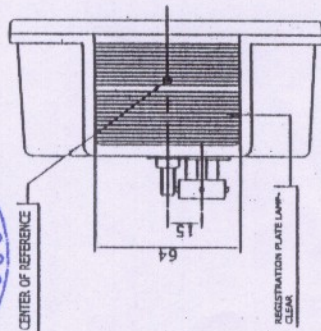
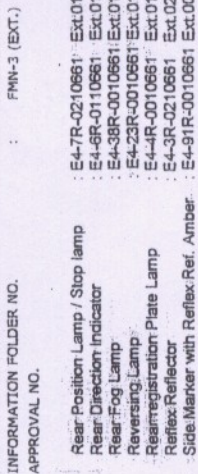
VIEW FROM 'Z'

DIMENSIONS ARE IN
 MM
 DO NOT SCALE THE
 DRAWING.
 UNSPECIFIED TOLER-
 ANCES AS PER
 132102 MEDIUM
 GRADE

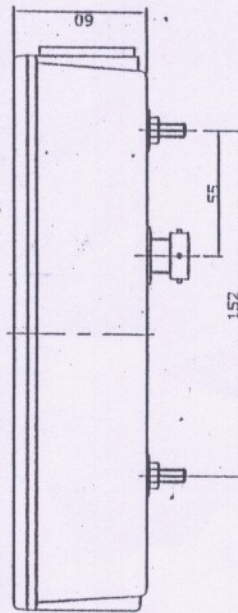
FLEM INDUSTRIES LTD.
 32 MILE STONE G.T. ROAD
 KUNDLI DISTT. SONEPAT (HR.)

DIMENSIONS ARE IN MM DO NOT SCALE THE DRAWING. UNSPECIFIED TOLERA- NCES AS PER 132102 MEDIUM GRADE	DRAWN		DATE	
	CHKD.		TIME P.M.	
	APPROD.		SCALE	
			ALL	
PART NAME		TAIL LAMP ASSY. WITH SIDE MARKER		MOD. NO. 1
DRG. NO.		FMN-3 (EXT.)		

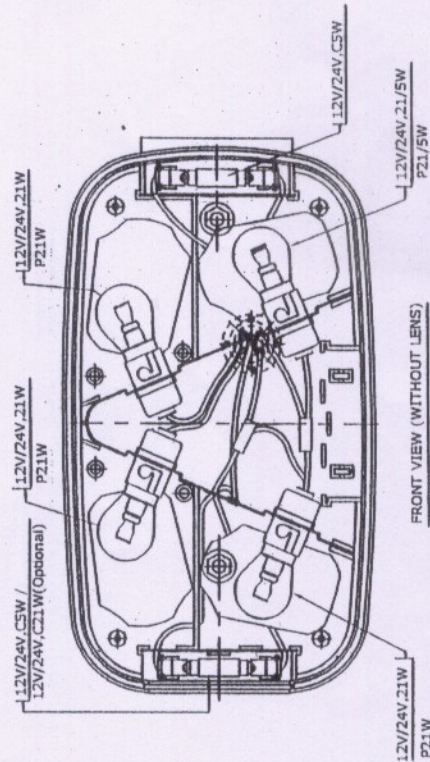
CHANGE NOTE



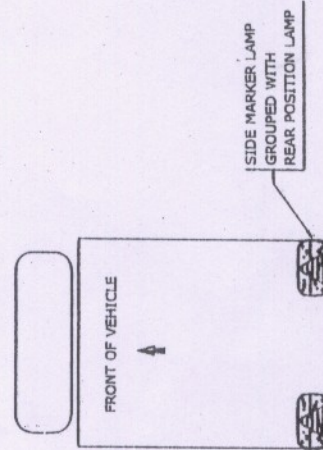
VIEW FROM 'Y'



VIEW FROM 'X'



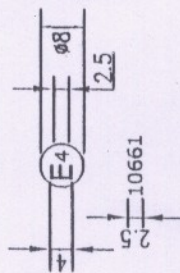
FRONT VIEW (WITHOUT LENS)
SHOWING WIRING & BULB ARRANGEMENT/MARKING



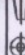
INSTALLATION VIEW

SIZE OF MARKING.

R-SI	III A	2a	F	L	AR
02	02	01	00	00	00



SHEET 2/3

MATERIAL SPEC.		FINISH		COMPONENT FOR:	
_____		_____		TRAILERS	
DIMENSIONS ARE IN INCHES AS PER UNLESS OTHERWISE DRAWING.		DRAWING		DATE	FIEM INDUSTRIES LTD. 32 MILE STONE G.T. ROAD KUNDLI DISTT. SOMEPAT (HR.)
		CHKD.		BY	
		APPD.		SCALE	
		PART NAME		TAIL LAMP ASSY. WITH SIDE MARKER	
		DRG. NO.		FMN-3 (EXT.)	
				MOD. NO.	1
					

CHANGE NOTE			
AMOUNT	DATE	LOCN	REASON
1	---	---	CUSTOMER REQUIREMENT
SIDE MARKER WITH RR AMBER ADDED			

CHANGE NOTE



RDW

Vehicle Technology Division

THE NETHERLANDS
(NEDERLAND)



Concerning: - ~~APPROVAL GRANTED~~
- ~~APPROVAL EXTENDED~~
- ~~APPROVAL REFUSED~~
- ~~APPROVAL WITHDRAWN~~
- ~~PRODUCTION DEFINITELY DISCONTINUED~~

of a type of retroreflecting device pursuant to Regulation No. 3

Approval No.: E4 - 3R - 0210661

Extension No.: 02

Approval mark

IA



0210661

1. Trade name or mark of the device : ASPÖCK
2. Manufacturer's name for the type of device : FMN-3
3. Manufacturer's name and address : Fiem Industries Ltd.
32, Mile Stone, G.T. Road,
KUNDLI, Distt. SONEPAT,
HARYANA, INDIA
4. If applicable, name and address of manufacturer's representative : not applicable
5. Submitted for approval on : January 21, 2005.
6. Technical service responsible for conducting approval tests : TÜV Kraftfahrt GmbH
Institut für Verkehrssicherheit
Am Grauen Stein
D-51105 Köln (Poll)
7. Date of test report issued by that service : April 6, 2005.
8. Number of test report issued by that service : 89-R3-01001/05

9. Concise description

~~In isolation~~ / part of an assembly of devices

Colour of light emitted

: ~~white~~ / red / amber

Geometrical conditions of installation and relating variations, if any

: refer the drawing no. FMN-3 (EXT.) Sheet 1/3 to 3/3

10. Position of the approval mark

: on the lens

11. Reason(s) for extension (if applicable)

: change of colour and class of reflex reflector

12. Approval ~~granted~~ / extended / ~~refused~~ / ~~withdrawn~~

13. Place

: Zoetermeer

14. Date

:

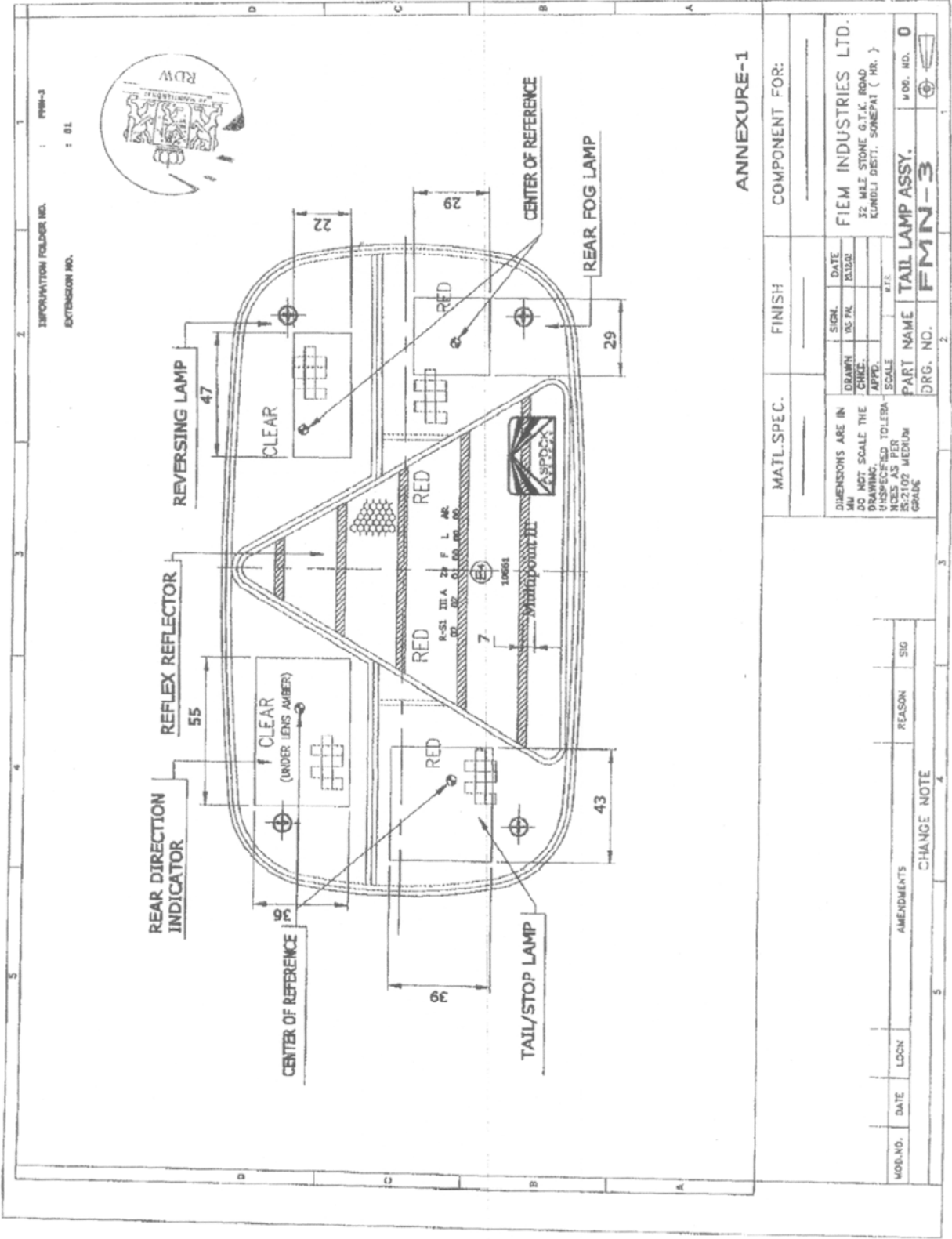
04 MEI 2005

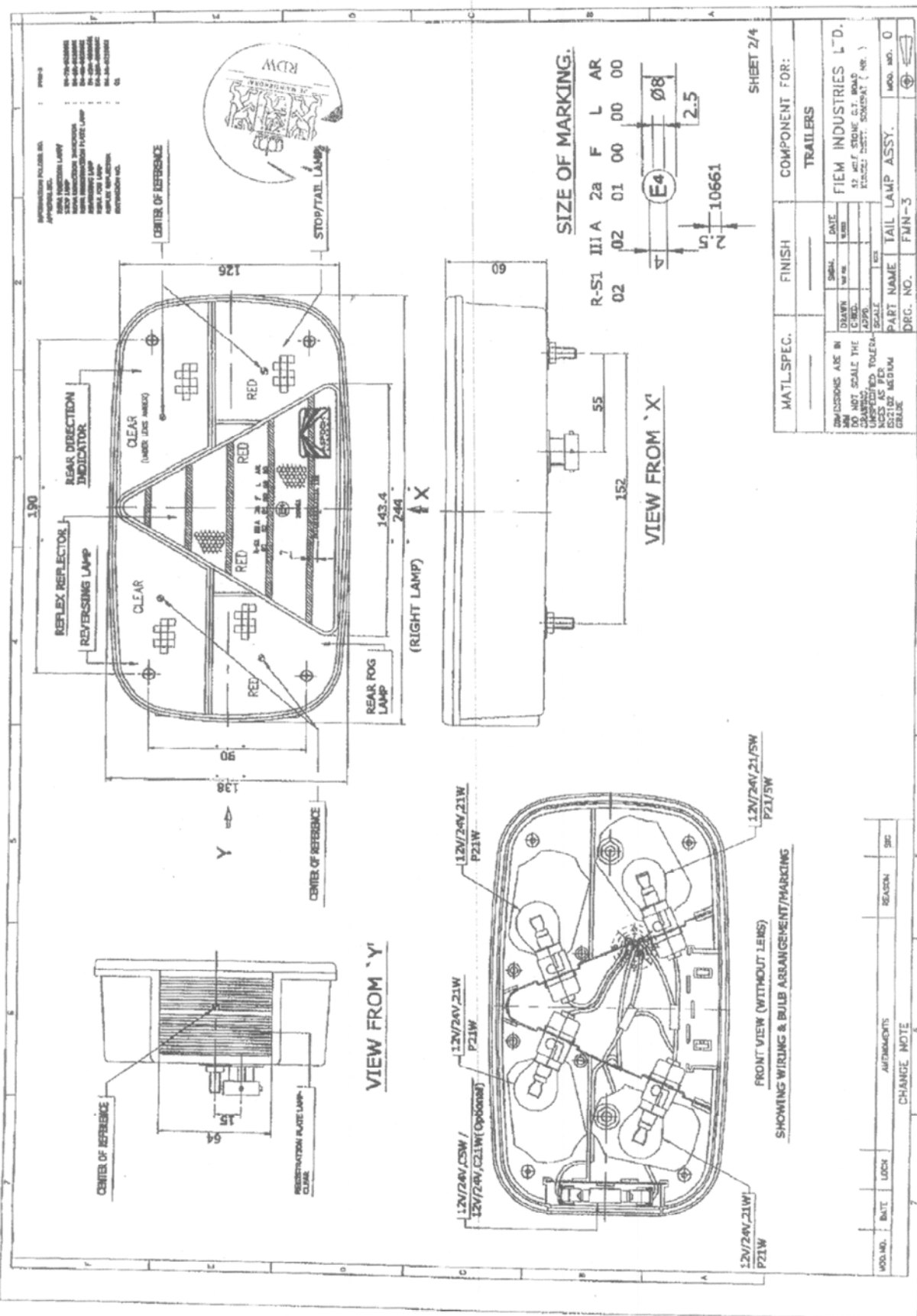
15. Signature

:

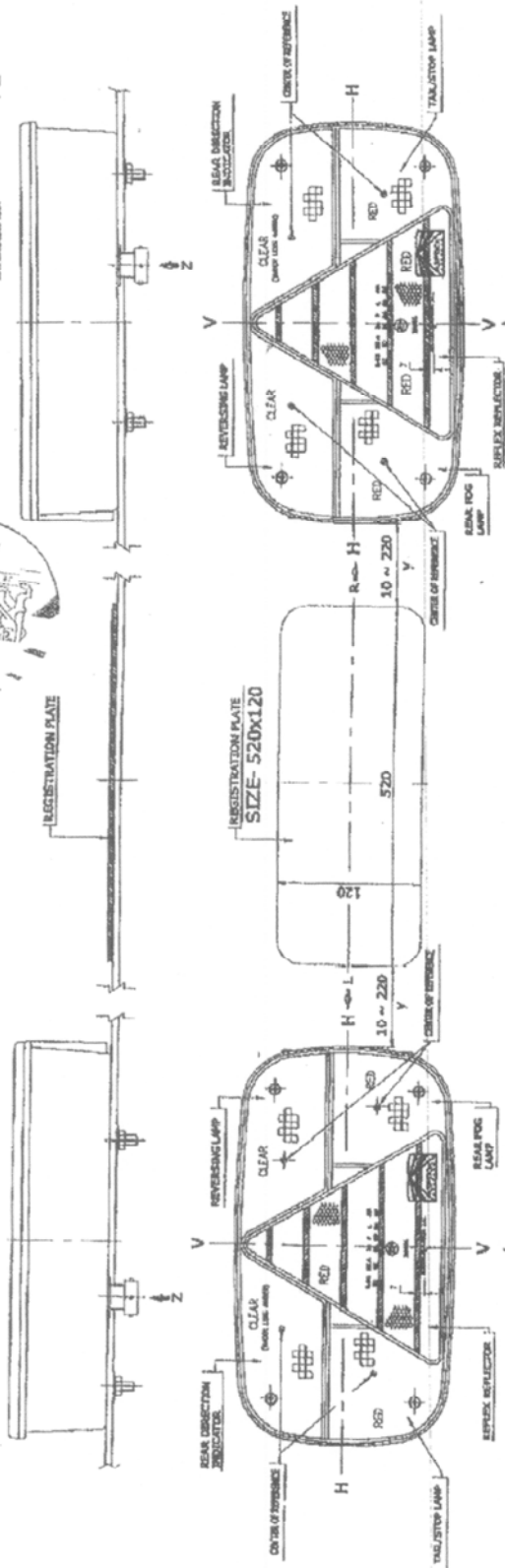
A handwritten signature in black ink is written over a circular official stamp. The stamp contains the text 'RDW' and a coat of arms. Below the stamp, the name 'F. Plancius' is printed. Above the signature, the date '04 MEI 2005' is stamped.

16. The list of documents (5 pages) deposited with the Administrative Service which has granted approval is annexed to this communication and may be obtained upon request.



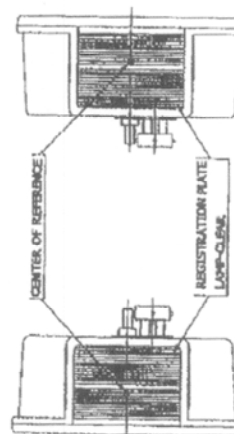
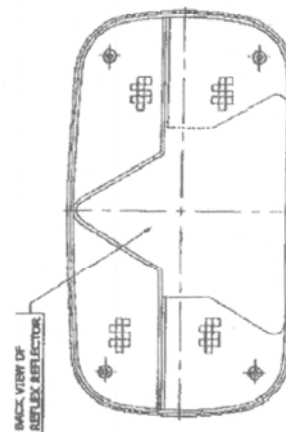


INFORMATION FOLDER NO.	64-79-0210661	79-2
APPROVAL NO.	64-48-0210661	
REAL POSITION LAMP	64-48-0210661	
STOP LAMP	64-48-0210661	
REAL DIRECTION INDICATOR	64-48-0210661	
REAL REGISTRATION PLATE LAMP	64-48-0210661	
REVERSE LAMP	64-48-0210661	
REAL POC LAMP	64-48-0210661	
REFLEX REFLECTOR	64-48-0210661	
EXTENSION NO.	01	



NOTE:-

- | QUESTIONS | ANSWERS |
|--------------------------------------------------|---------|
| 1. FOR MOUNTING EITHER OUTSIDE OR INSIDE OF BODY | OUTSIDE |
| 2. SPECIAL MOUNTING | — |
| 3. SPECIAL MOUNTING | — |
| 4. SPECIAL MOUNTING | — |
| 5. SPECIAL MOUNTING | — |
| 6. SPECIAL MOUNTING | — |
| 7. SPECIAL MOUNTING | — |
| 8. SPECIAL MOUNTING | — |
| 9. SPECIAL MOUNTING | — |
| 10. SPECIAL MOUNTING | — |
| 11. SPECIAL MOUNTING | — |
| 12. SPECIAL MOUNTING | — |
| 13. SPECIAL MOUNTING | — |
| 14. SPECIAL MOUNTING | — |
| 15. SPECIAL MOUNTING | — |
| 16. SPECIAL MOUNTING | — |
| 17. SPECIAL MOUNTING | — |
| 18. SPECIAL MOUNTING | — |
| 19. SPECIAL MOUNTING | — |
| 20. SPECIAL MOUNTING | — |
| 21. SPECIAL MOUNTING | — |
| 22. SPECIAL MOUNTING | — |
| 23. SPECIAL MOUNTING | — |
| 24. SPECIAL MOUNTING | — |
| 25. SPECIAL MOUNTING | — |
| 26. SPECIAL MOUNTING | — |
| 27. SPECIAL MOUNTING | — |
| 28. SPECIAL MOUNTING | — |
| 29. SPECIAL MOUNTING | — |
| 30. SPECIAL MOUNTING | — |
| 31. SPECIAL MOUNTING | — |
| 32. SPECIAL MOUNTING | — |
| 33. SPECIAL MOUNTING | — |
| 34. SPECIAL MOUNTING | — |
| 35. SPECIAL MOUNTING | — |
| 36. SPECIAL MOUNTING | — |
| 37. SPECIAL MOUNTING | — |
| 38. SPECIAL MOUNTING | — |
| 39. SPECIAL MOUNTING | — |
| 40. SPECIAL MOUNTING | — |
| 41. SPECIAL MOUNTING | — |
| 42. SPECIAL MOUNTING | — |
| 43. SPECIAL MOUNTING | — |
| 44. SPECIAL MOUNTING | — |
| 45. SPECIAL MOUNTING | — |
| 46. SPECIAL MOUNTING | — |
| 47. SPECIAL MOUNTING | — |
| 48. SPECIAL MOUNTING | — |
| 49. SPECIAL MOUNTING | — |
| 50. SPECIAL MOUNTING | — |
| 51. SPECIAL MOUNTING | — |
| 52. SPECIAL MOUNTING | — |
| 53. SPECIAL MOUNTING | — |
| 54. SPECIAL MOUNTING | — |
| 55. SPECIAL MOUNTING | — |
| 56. SPECIAL MOUNTING | — |
| 57. SPECIAL MOUNTING | — |
| 58. SPECIAL MOUNTING | — |
| 59. SPECIAL MOUNTING | — |
| 60. SPECIAL MOUNTING | — |
| 61. SPECIAL MOUNTING | — |
| 62. SPECIAL MOUNTING | — |
| 63. SPECIAL MOUNTING | — |
| 64. SPECIAL MOUNTING | — |
| 65. SPECIAL MOUNTING | — |
| 66. SPECIAL MOUNTING | — |
| 67. SPECIAL MOUNTING | — |
| 68. SPECIAL MOUNTING | — |
| 69. SPECIAL MOUNTING | — |
| 70. SPECIAL MOUNTING | — |
| 71. SPECIAL MOUNTING | — |
| 72. SPECIAL MOUNTING | — |
| 73. SPECIAL MOUNTING | — |
| 74. SPECIAL MOUNTING | — |
| 75. SPECIAL MOUNTING | — |
| 76. SPECIAL MOUNTING | — |
| 77. SPECIAL MOUNTING | — |
| 78. SPECIAL MOUNTING | — |
| 79. SPECIAL MOUNTING | — |
| 80. SPECIAL MOUNTING | — |
| 81. SPECIAL MOUNTING | — |
| 82. SPECIAL MOUNTING | — |
| 83. SPECIAL MOUNTING | — |
| 84. SPECIAL MOUNTING | — |
| 85. SPECIAL MOUNTING | — |
| 86. SPECIAL MOUNTING | — |
| 87. SPECIAL MOUNTING | — |
| 88. SPECIAL MOUNTING | — |
| 89. SPECIAL MOUNTING | — |
| 90. SPECIAL MOUNTING | — |
| 91. SPECIAL MOUNTING | — |
| 92. SPECIAL MOUNTING | — |
| 93. SPECIAL MOUNTING | — |
| 94. SPECIAL MOUNTING | — |
| 95. SPECIAL MOUNTING | — |
| 96. SPECIAL MOUNTING | — |
| 97. SPECIAL MOUNTING | — |
| 98. SPECIAL MOUNTING | — |
| 99. SPECIAL MOUNTING | — |
| 100. SPECIAL MOUNTING | — |



VIEW FROM 'R'

VIEW FROM 'L'

VIEW FROM 'Z'

[illegible]

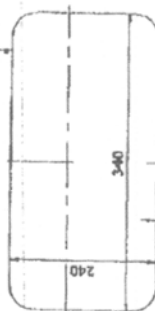
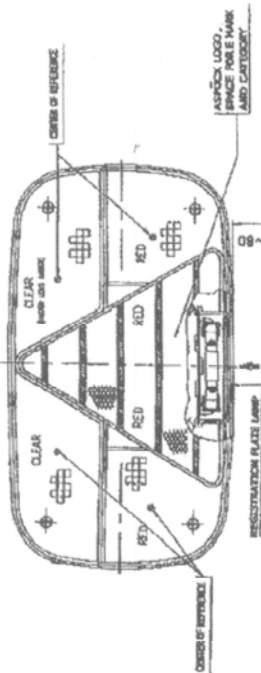
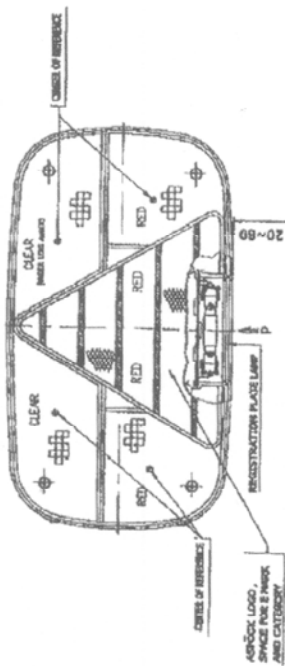
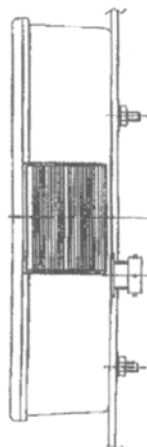
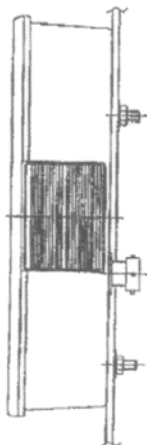
FIELD INDUSTRIES LTD.
32 WILE STONE G.T. ROAD
KUNGLI DISTT. SONCEPAT (M.R.)

SCALE	DATE	TAIL LAMP ASSY.
PART NAME		

PART NAME	TAIL DRUM REQD.	DRG. NO.
	FMN-3	

OPTION-II

INFORMATION FOLDER NO. : PM-3
EDITION NO. : 01



SHEET 4/4

WATLSPEC.		FINISH		COMPONENT FOR:	
TRAILERS					
DIVISIONS ARE IN					
DRAWN	CHECKED	DATE			
APPROVED					
DO NOT SCALE THE					
UNSPECIFIED TOLERANCES AS PER					
BS2078 MEDIUM					
SCALE					
PART NAME	TAIL LAMP ASSY.	MOS. NO.	0		
DRG. NO.	FMN-3				
FIEM INDUSTRIES LTD. 52 WILE STONE GL. ROAD KANDU WEST, SONapat (W.B)					

AMOUNT	DATE	LOCATION	AMENDMENTS	REASON	SG
--------	------	----------	------------	--------	----



RDW

Vehicle Technology Division

THE NETHERLANDS
(N E D E R L A N D)



COMMUNICATION

Concerning: - APPROVAL GRANTED
- APPROVAL EXTENDED
- APPROVAL REFUSED
- APPROVAL WITHDRAWN
- PRODUCTION DEFINITELY DISCONTINUED

of a type of retroreflecting device pursuant to Regulation No. 3

Approval No.: E4 - 3R - 0210661

Extension No.: 01

Approval mark

IIA



0210661

- | | | |
|----|---------------------------------------------------------------------|----------------------------------------------------------------------------------------------------|
| 1. | Trade name or mark of the device | : ASPÖCK |
| 2. | Manufacturer's name for the type of device | : FMN-3 |
| 3. | Manufacturer's name and address | : Fiem Industries Ltd.
32, Mile Stone, G.T. Road,
KUNDLI, Distt. SONEPAT,
HARYANA, INDIA |
| 4. | If applicable, name and address of
manufacturer's representative | : not applicable |
| 5. | Submitted for approval on | : December 20, 2003. |
| 6. | Technical service responsible for conducting
approval tests | : TÜV Kraftfahrt GmbH
Institut für Verkehrssicherheit
Am Grauen Stein
D-51105 Köln (Poli) |
| 7. | Date of test report issued by that service | : August 1, 2004. |
| 8. | Number of test report issued by that service | : 89-R3-00799/04 |



Approval No.: E4 - 3R - 0210661

Extension No.: 01

9. Concise description

In-isolation / part of an assembly of devices

Colour of light emitted

: white / red / amber

Geometrical conditions of installation and relating variations, if any

: Refer the drawing no. FMN-3 SHEET 1/4

10. Position of the approval mark

: on the lens

11. Reason(s) for extension (if applicable)

: Introduction of supply voltage 24 Volt

12. Approval granted / extended / refused / withdrawn

13. Place

: Zoetermeer

14. Date

: 19 AUG. 2004

15. Signature



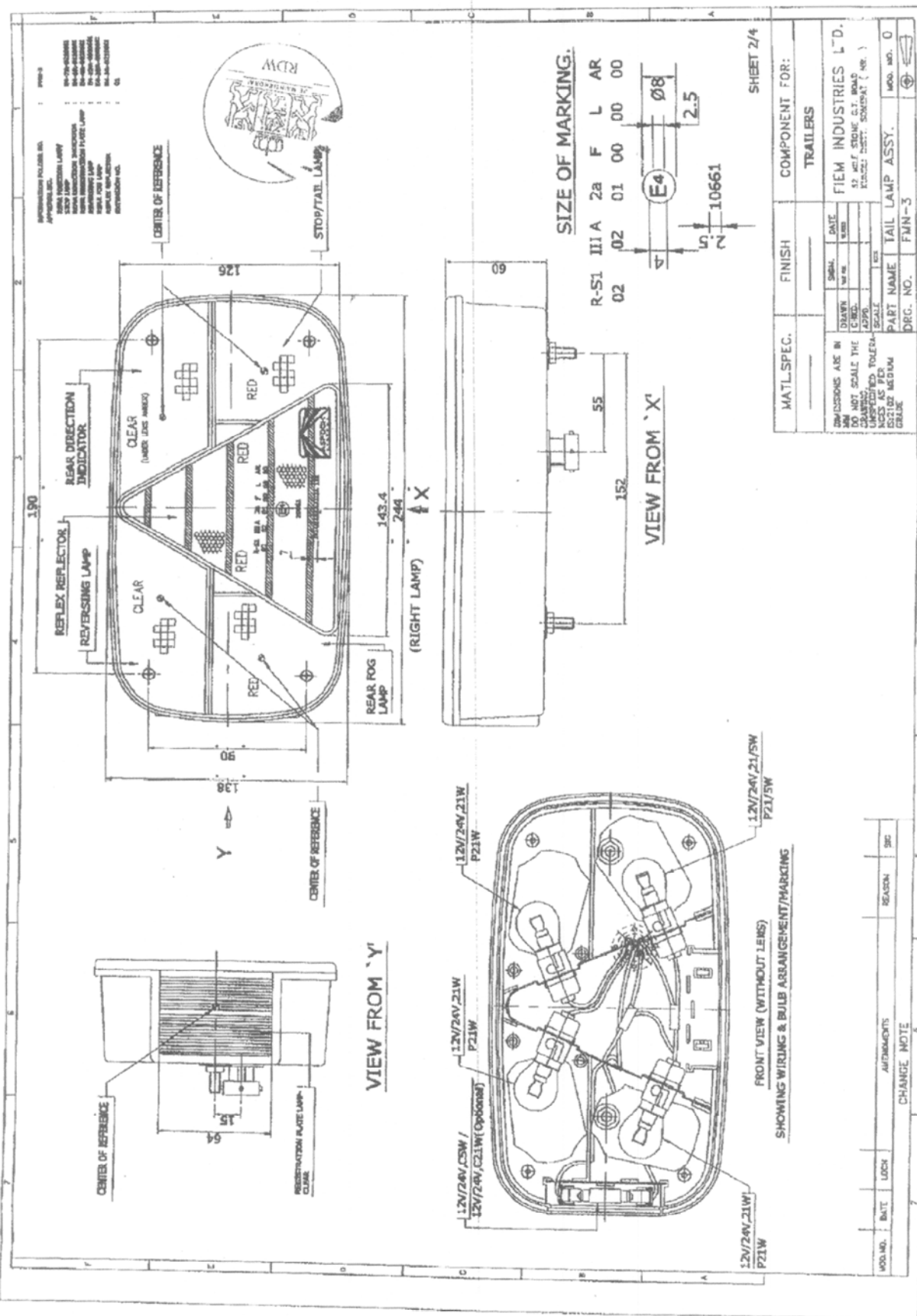
J.C.M. Hoes

16. The list of documents (6 pages) deposited with the Administrative Service which has granted approval is annexed to this communication and may be obtained upon request.

Postbus 777
2700 AT Zoetermeer
S.C. RMG

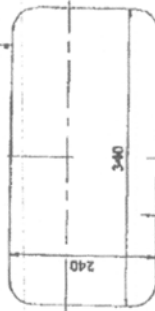
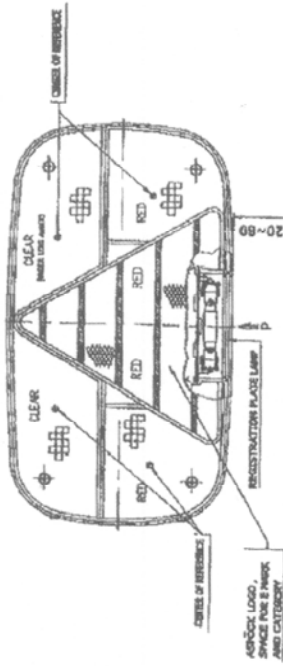
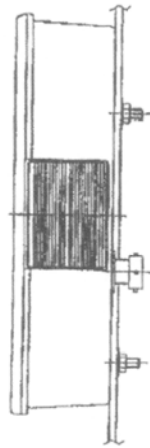
Europaweg 205
Zoetermeer

Tel +31 79 345 81 43
Fax +31 79 345 80 33



OPTIONS FOR REGISTRATION PLATE/LAMP

OPTION-I

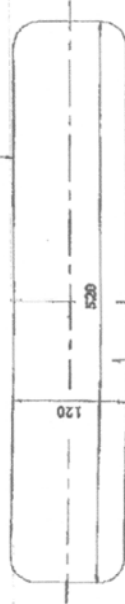
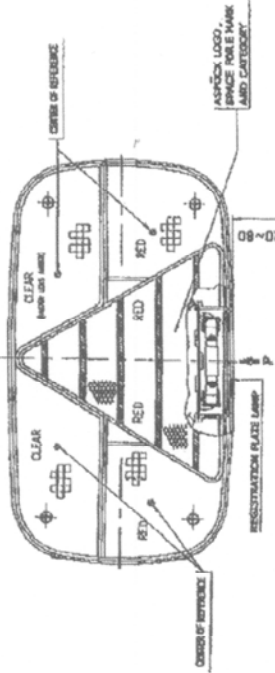
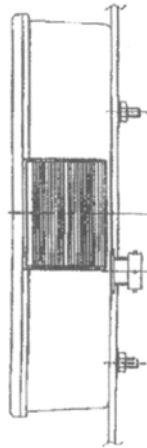


REGISTRATION PLATE
SIZE- 340X240



REGISTRATION PLATE

OPTION-II



REGISTRATION PLATE
SIZE- 520X120



REGISTRATION PLATE

SHEET 4/4

MATL. SPEC.	FINISH	COMPONENT FOR:
		TRAILERS
DIVISIONS ARE IN DRAWN DATE DO NOT SCALE THE DRAWING UNLESS SPECIFIED TO SCALE NEEDS AS PER RS2102 MEDIUM GRADE		
PART NAME	TAIL LAMP ASSY.	MOD. NO. D
DRG. NO.	FMN-3	

ADD. NO.	DATE	LOAN	AMENDMENTS	REASON	SIC
CHANGE NOTE					





RDW

Vehicle Technology Division

THE NETHERLANDS
(N E D E R L A N D)



COMMUNICATION

Concerning: - ~~APPROVAL GRANTED~~
- ~~APPROVAL EXTENDED~~
- ~~APPROVAL REFUSED~~
- ~~APPROVAL WITHDRAWN~~
- ~~PRODUCTION DEFINITELY DISCONTINUED~~

of a type of rear position lamp and stop lamp pursuant to Regulation No. 7

Approval No.: E4-7R-02 10661

Extension No.: 01

Approval mark

R-S1



0210661

- | | | | |
|----|---------------------------------------------------------------------|---|---------------------------------------------------------------------------------------------------|
| 1. | Trade name or mark of the device | : | ASPOCK |
| 2. | Manufacturer's name for the type of device | : | FMN-3 |
| 3. | Manufacturer's name and address | : | Fiem Industries Ltd.
32, Mile Stone, G.T. Road,
KUNDLI, Distt. SONPAT,
HARYANA, INDIA |
| 4. | If applicable, name and address of
manufacturer's representative | : | not applicable |
| 5. | Submitted for approval on | : | December 20, 2003 |
| 6. | Technical service responsible for conducting
approval tests | : | TÜV Kraftfahrt GmbH
Institute für Verkehrssicherheit
Am Grauen Stein
D-51105 Köln (Poll) |
| 7. | Date of test report | : | August 1, 2004. |
| 8. | Number of test report | : | 89-R7-00794/04 |



P.O. Box 777
2700 AT Zoetermeer
The Netherlands

Tel. + 31 (0)79 345 81 43
Fax + 31 (0)79 345 80 43
www.rdw.nl

Vehicle Approval and Information

9. Concise description
- By category of lamp : R - S1
- For mounting either outside or inside or both : outside
- Colour of light emitted : white-/ red /selective-yellow
- Number and category of filament lamp(s) : 1 x P21/5W
- Special supply voltage : 24 Volt DC
- Application of additional supply system : yes/no
- Specification of this supply system : not applicable
- Switched power supply
- duty cycle : not applicable
- peak to peak voltage : not applicable
- and/or effective voltage : not applicable
- Geometrical conditions of installation and relating variations, if any : Refer the drawing no. FMN-3 SHEET 1/4
- Only for limited mounting height of equal to or less than 750mm above the ground : yes/no
10. Position of the approval mark : on the lens
11. Reason(s) for extension (if applicable) : Introduction of supply voltage 24 Volt
12. Approval granted-/ extended / refused / withdrawn
13. Place : Zoetermeer
14. Date : 19 AUG. 2004
15. Signature



C.M. Hoes

16. The list of documents (6 pages) deposited with the Administrative Service which has granted approval is annexed to this communication and may be obtained upon request.