



ASPÖCK PORTUGAL, S.A.
Rua do Paraíso - Zona Industrial de Rebordões
Apartado 131 3721 - 908 Vila de Cucujães - O. de Azemeis
Telef. +351 256 856 070 * Fax +351 256 856 079
E-mail: geral@aspoeck.pt

Part Name :

Multipoint V RH

Part Number: **DH_80125002**

Draw by :

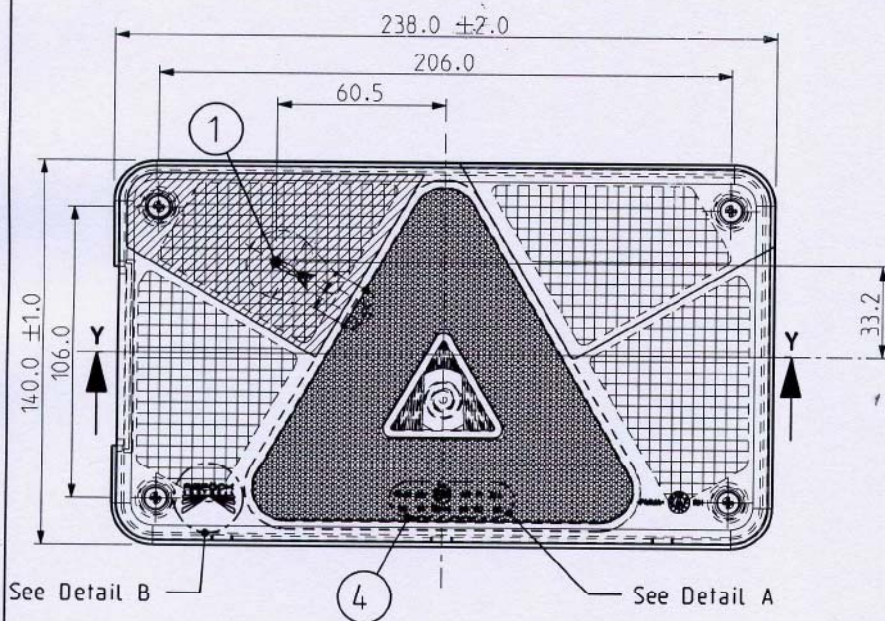
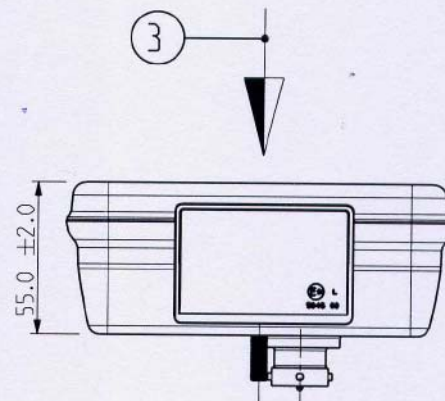
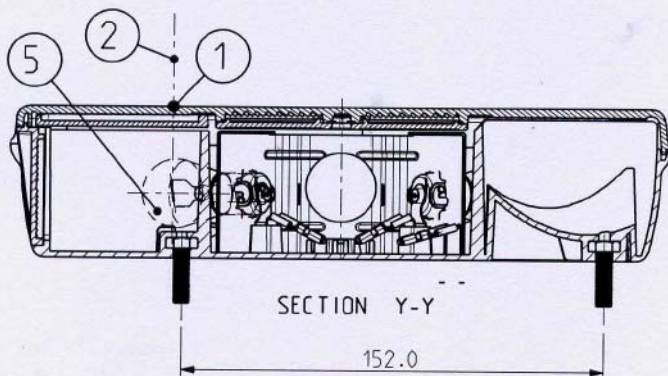
Date :
27/04/10

Checked by :

Sheet Nr.
1 de 9

Function

FOG



Descriptive Memory

- 1 - Center of Reference
- 2 - Axis of Reference
- 3 - Movement of Vehicle
- 4 - Homologation Mark
- 5 - Bulb P21W



Detail A
Scale 1/1



Detail B
Scale 1/1

Note:

- Dimensions mm
- Scale 5/12

Mod. F.156 02/09



ASPÖCK PORTUGAL, S.A.
Rua do Paraíso - Zona Industrial de Rebordões
Apartado 131 3721 - 908 Vila de Cucujães - O. de Azemeis
Telef. +351 256 856 070 * Fax +351 256 856 079
E-mail: geral@aspoeck.pt

Part Name :

Multipoint V RH

Part Number: **DH_80125002**

Draw by :

Date :

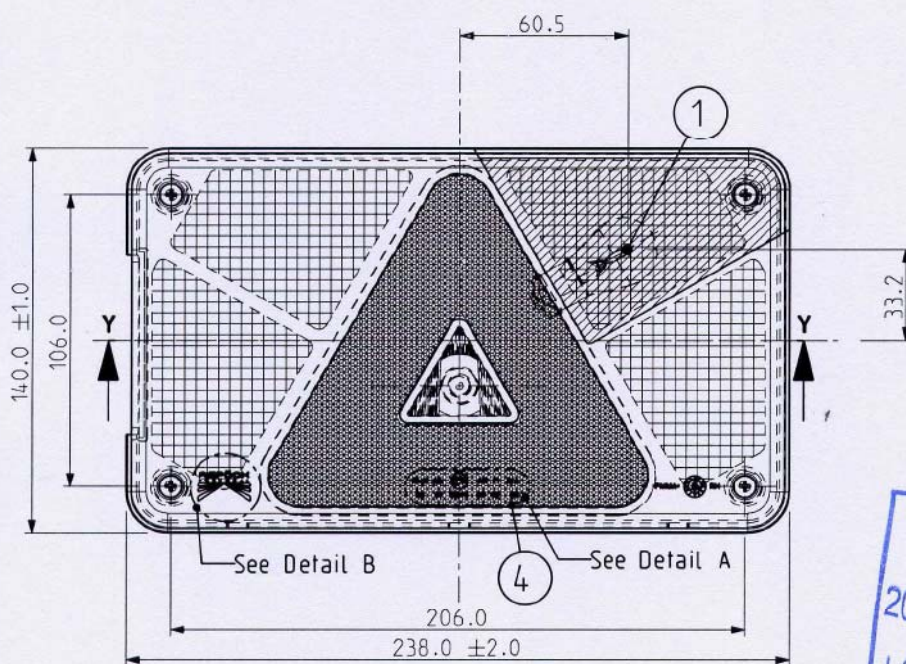
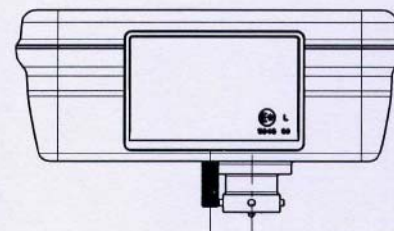
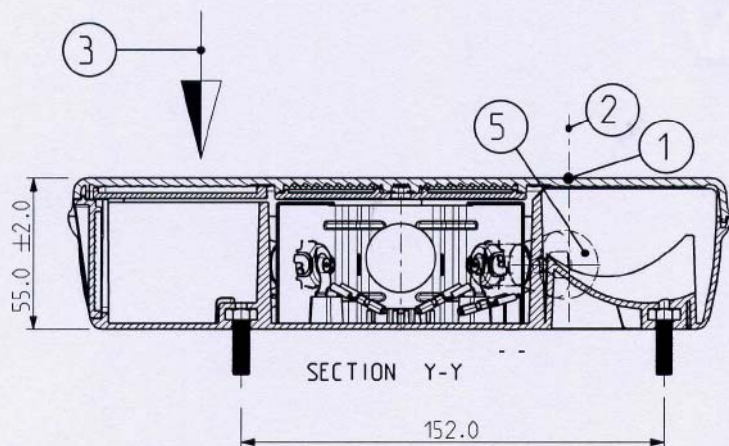
27/04/10

Checked by :

Sheet Nr.

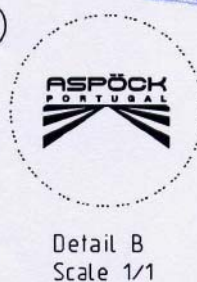
2 de 9

Function REVERSE



Descriptive Memory

- 1 - Center of Reference
- 2 - Axis of Reference
- 3 - Movement of Vehicle
- 4 - Homologation Mark
- 5 - Bulb P21W



Note:

- Dimensions mm
- Scale 5/12

Mod. F.156 02/09



ASPOCK PORTUGAL, S.A.
Rua do Paraíso - Zona Industrial de Rebordões
Apartado 131 3721 - 908 Vila de Cucujães - O. de Azemeis
Telef. +351 256 856 070 * Fax +351 256 856 079
E-mail: geral@aspoeck.pt

Part Name :

Multipoint V RH

Part Number: **DH_80125002**

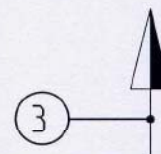
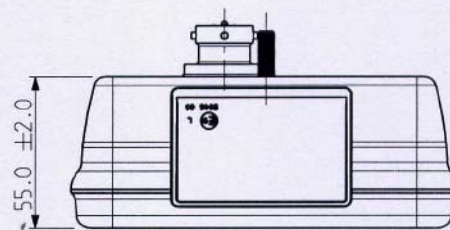
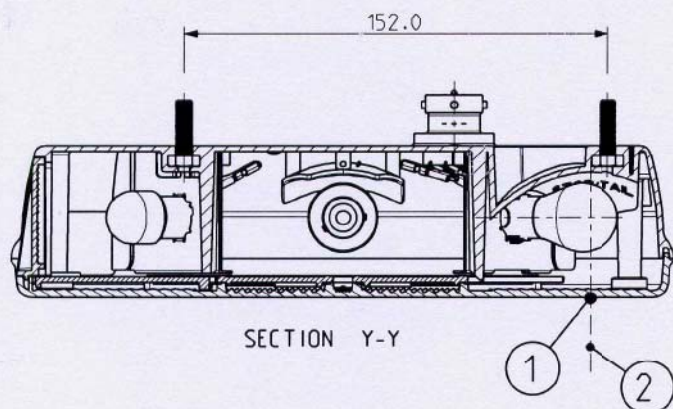
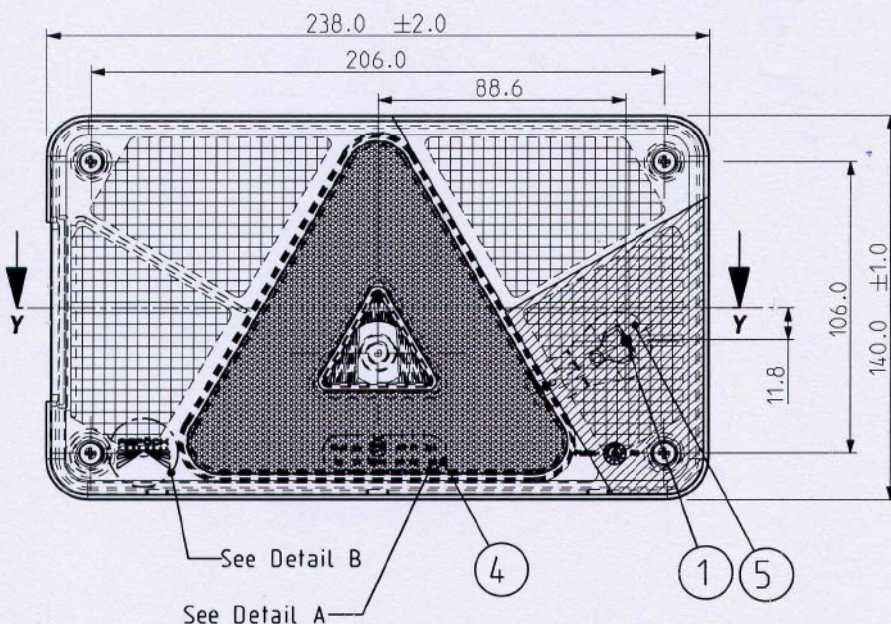
Draw by :

Date :
27/04/10

Checked by :

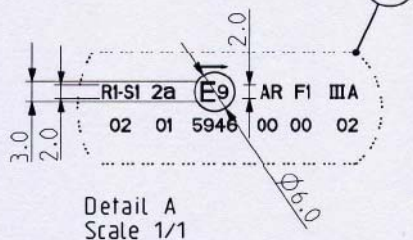
Sheet Nr.
3 de 9

Function
STOP / TAIL



Descriptive Memory

- 1 - Center of Reference
- 2 - Axis of Reference
- 3 - Movement of Vehicle
- 4 - Homologation Mark
- 5 - Bulb P21/5W



Note:

- Dimensions mm
- Scale 5/12

Mod. F.156 02/09



ASPOCK PORTUGAL, S.A.
Rua do Paraíso - Zona Industrial de Rebordões
Apartado 131 3721 - 908 Vila de Cucujães - O. de Azemeis
Telef. +351 256 856 070 * Fax +351 256 856 079
E-mail: geral@aspoeck.pt

Part Name :

Multipoint V RH

Part Number: **DH_80125002**

Draw by :

Date :

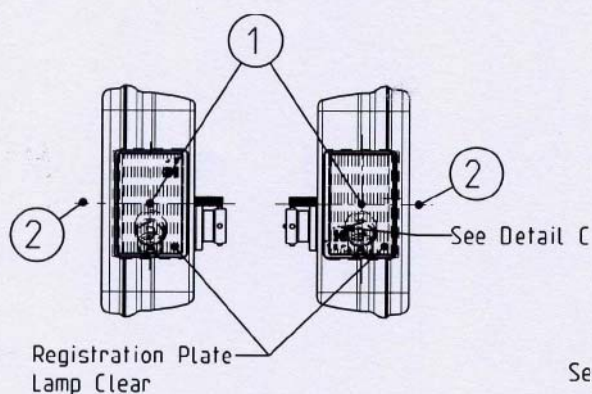
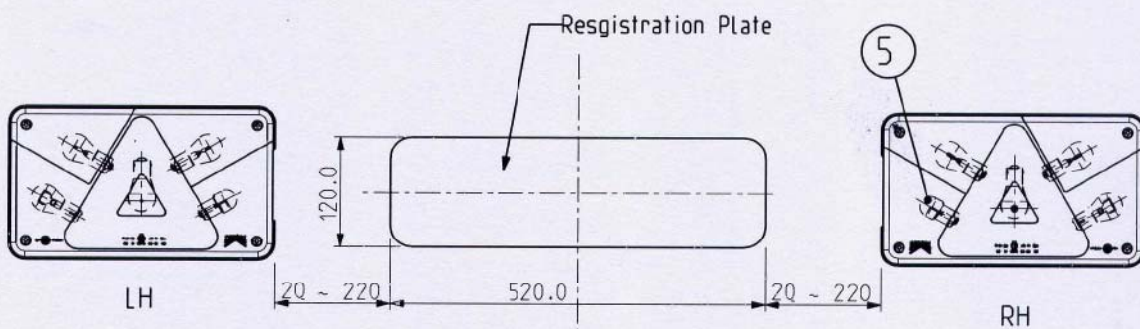
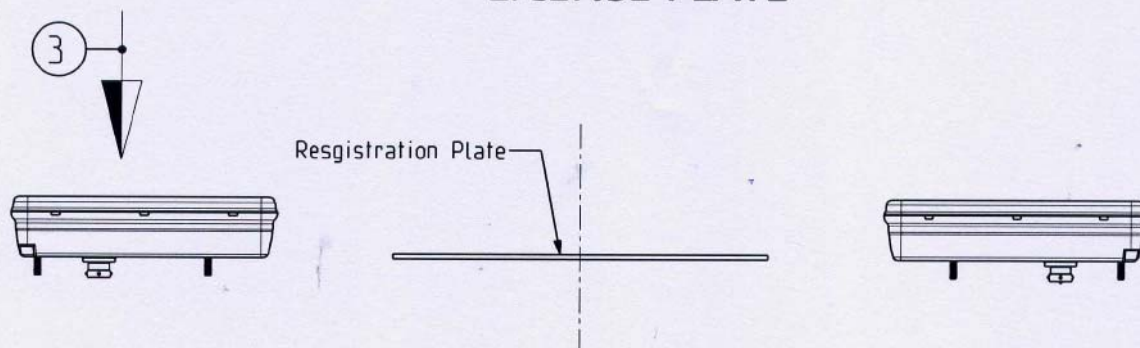
27/04/10

Checked by :

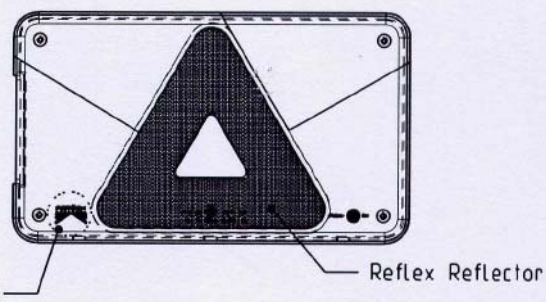
Sheet Nr.

4 de 9

Function LICENSE PLATE



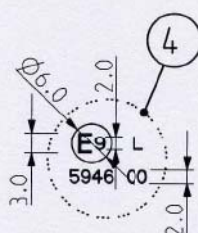
SCALE 1/4



SCALE 1/4

Descriptive Memory

- 1 - Center of Reference
- 2 - Axis of Reference
- 3 - Movement of Vehicle
- 4 - Homologation Mark
- 5 - Bulb R10W



Detail C
Scale 1/1



Detail B
Scale 1/1

Note:

- Dimensions mm
- Scale 1/6

Mod. F.156 02/09.



ASPOCK PORTUGAL, S.A.
 Rua do Paraíso - Zona Industrial de Rebordões
 Apartado 131 3721 - 908 Vila de Cucujães - O. de Azemeis
 Telef. +351 256 856 070 * Fax +351 256 856 079
 E-mail: geral@aspoeck.pt

Part Name :

Multipoint V RH

Part Number: **DH_80125002**

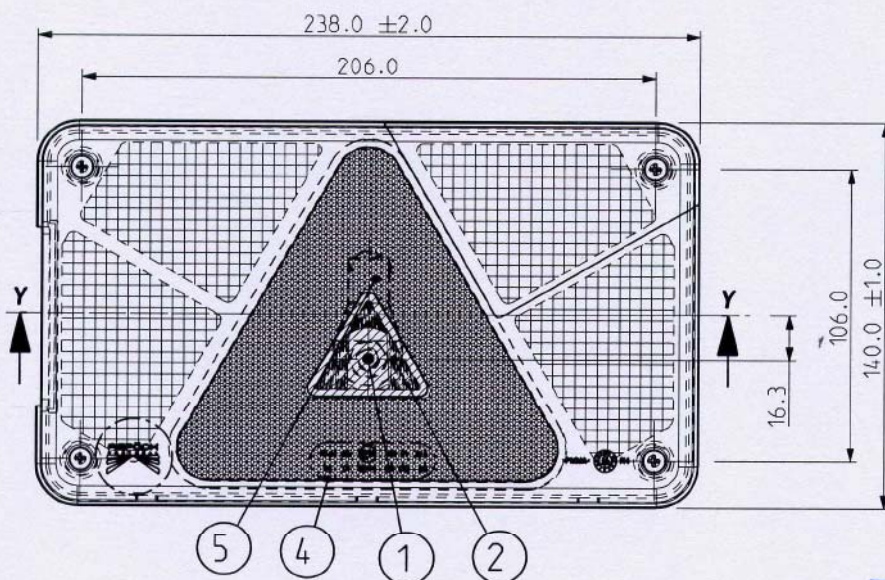
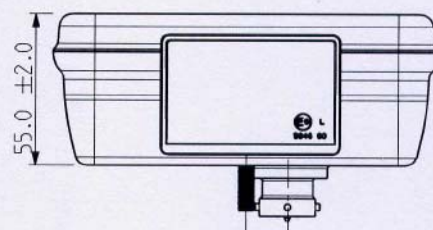
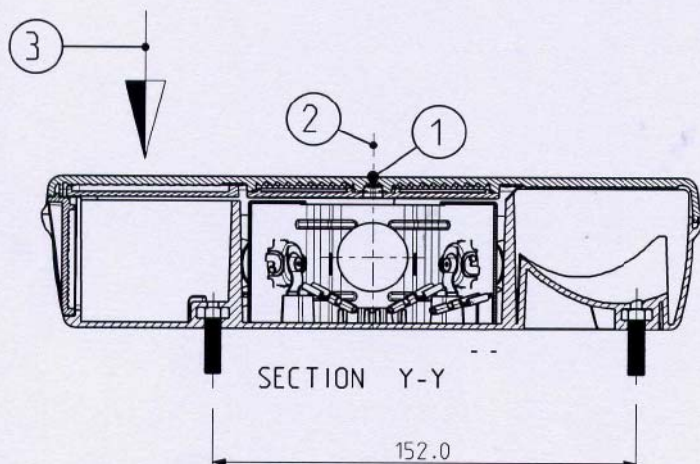
Draw by :

Date :
27/04/10

Checked by :

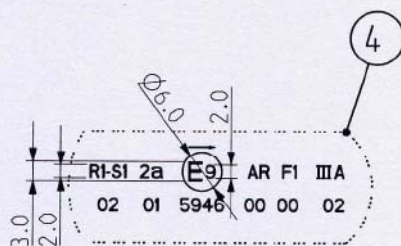
Sheet Nr.
6 de 9

Function FLASHER



Descriptive Memory

- 1 - Center of Reference
- 2 - Axis of Reference
- 3 - Movement of Vehicle
- 4 - Homologation Mark
- 5 - Bulb PY21W



Detail A
Scale 1/1



Detail B
Scale 1/1

Note:

- Dimensions mm
- Scale 5/12

Mod. F.156 02/09



ASPOCK PORTUGAL S.A.
Rua do Paraíso - Zona Industrial de Rebordões
Apartado 131 3721 - 908 Vila de Cucujães - O. de Azemeis
Telef. +351 256 856 070 * Fax +351 256 856 079
E-mail: geral@aspoeck.pt

Part Name :

Multipoint V RH

Part Number: **DH_80125002**

Draw by :

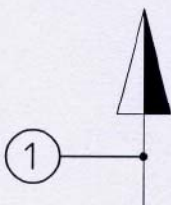
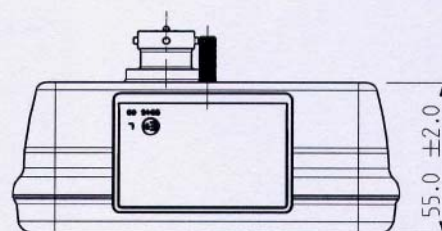
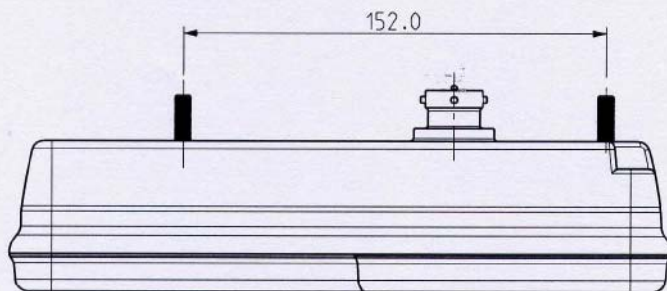
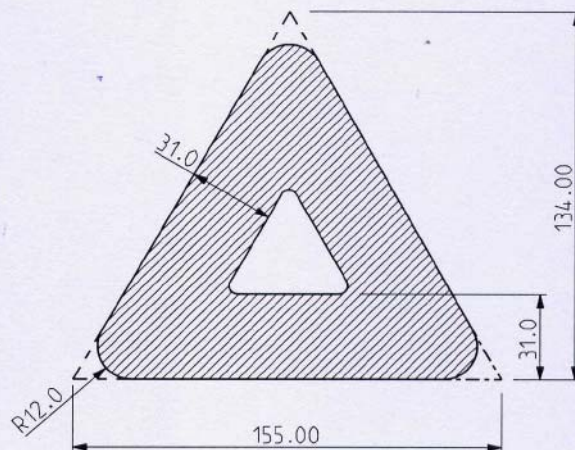
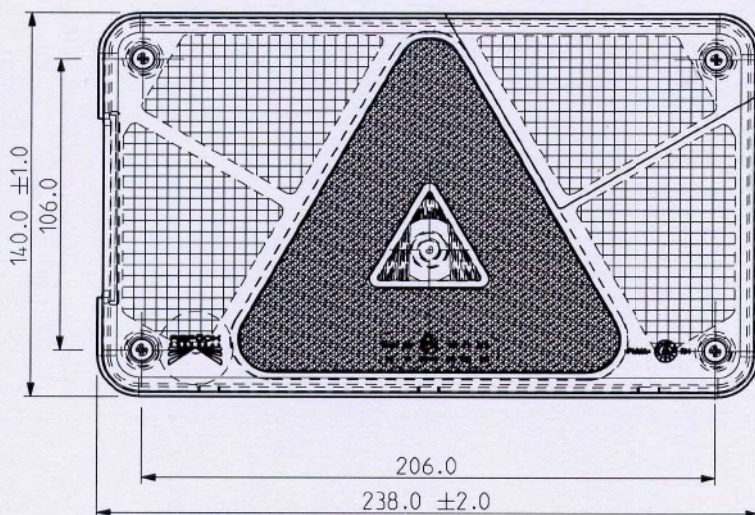
Date :
27/04/10

Checked by :

Sheet Nr.
7 de 9

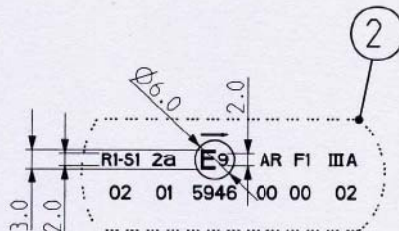
Function

RETRO - REFLECTOR



Descriptive Memory

- 1 - Movement of Vehicle
- 2 - Homologation Mark



Detail A
Scale 1/1



Detail B
Scale 1/1

Note:

- Dimensions mm
- Scale 5/12



ASPÖCK PORTUGAL, S.A.
Rua do Paraíso - Zona Industrial de Rebordões
Apartado 131 3721 - 908 Vila de Cucujães - O. de Azemeis
Telef. +351 256 856 070 * Fax +351 256 856 079
E-mail: geral@aspoeck.pt

Part Name :

Multipoint V RH

Part Number: **DH_80125002**

Draw by :

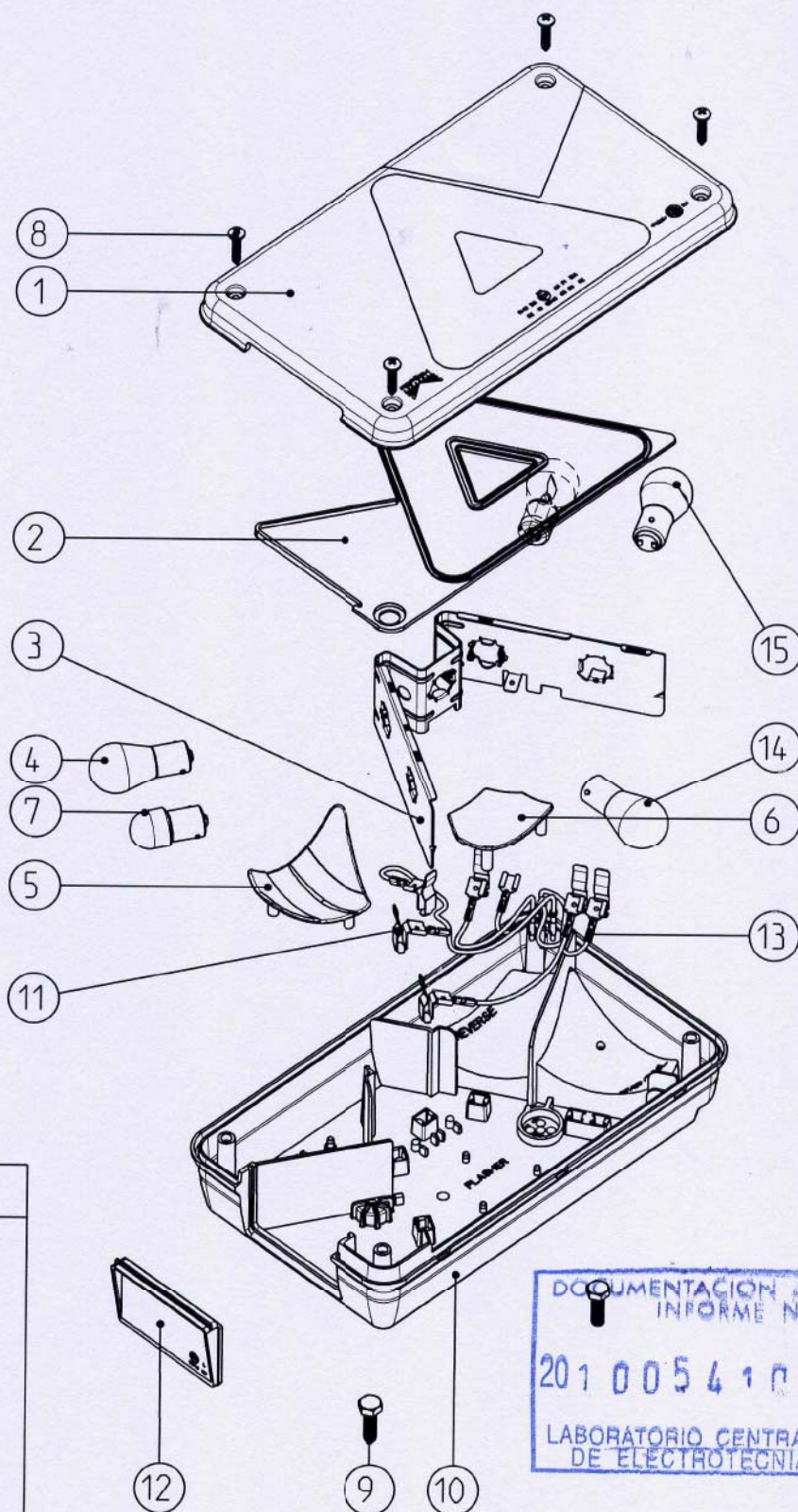
Date :

27/04/10

Checked by :

Sheet Nr.

8 de 9



Descriptive Memory

- 1 - Exterior Lens RH
- 2 - Triangle Cover
- 3 - Bulb Holder RH
- 4 - Bulb P21W
- 5 - Fog Reflector RH
- 6 - Flasher Reflector
- 7 - Bulb R10W
- 8 - Screw
- 9 - Screw
- 10 - Housing RH
- 11 - Terminal
- 12 - License Plate Lens
- 13 - Terminal
- 14 - Bulb Py21W
- 15 - Bulb P21/5W

Note:

- Dimensions mm
- Scale 1/3



ASPÖCK PORTUGAL, S.A.
Rua do Paraíso - Zona Industrial de Rebordões
Apartado 131 3721 - 908 Vila de Cucujães - O. de Azemeis
Telef. +351 256 856 070 * Fax +351 256 856 079
E-mail: geral@aspoeck.pt

Part Name :

Multipoint V RH

Part Number: **DH_80125002**

Draw by :

Date :

27/04/10

Checked by :

Sheet Nr.

9 de 9

Descriptive Memory

Rear Lamp = Multipoint V

Homologation ECE nº : 5946

Manufacturer : Aspöck Portugal

Address :

Rua do Paraíso - Zona Industrial de Rebordões

131 3721 - 208 Vila de Cucujães - O. de Azemeis

Type:

DH_80125001/2

Base Structure :

Housing = PP

Lens = PMMA

Bulb Holder = Metal

12V / 24V

