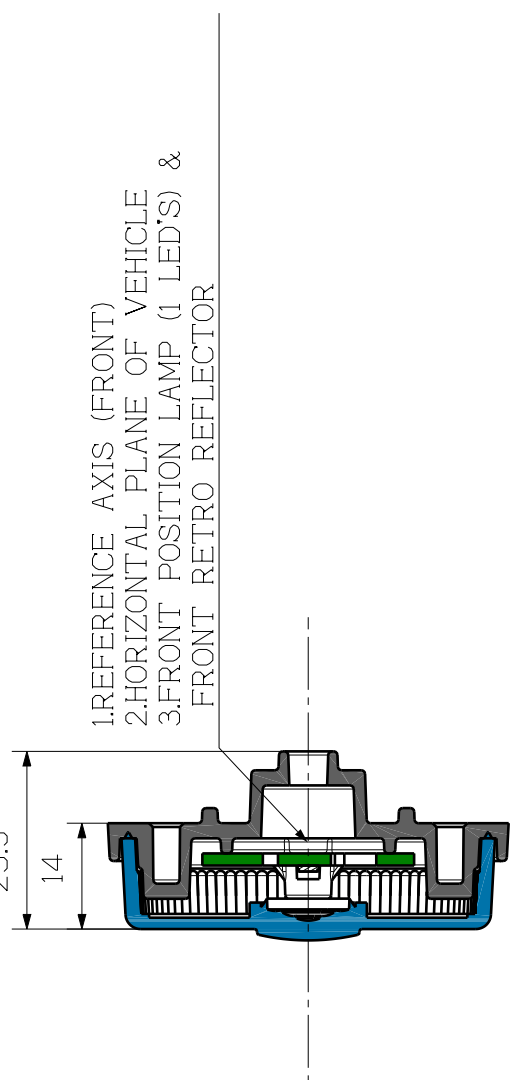
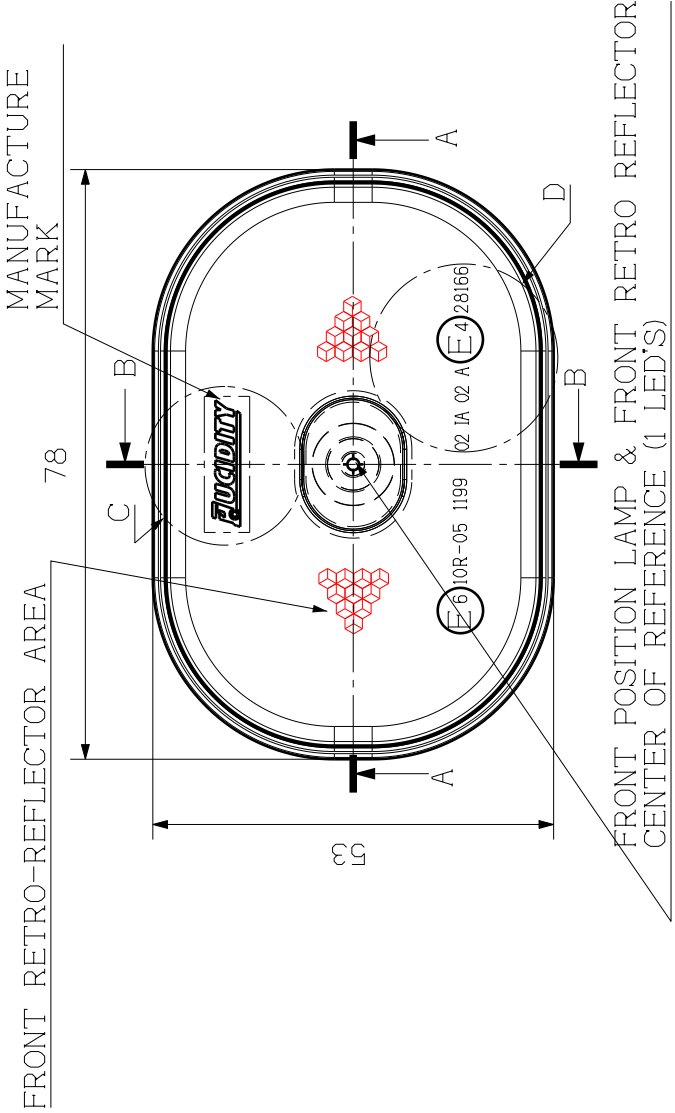
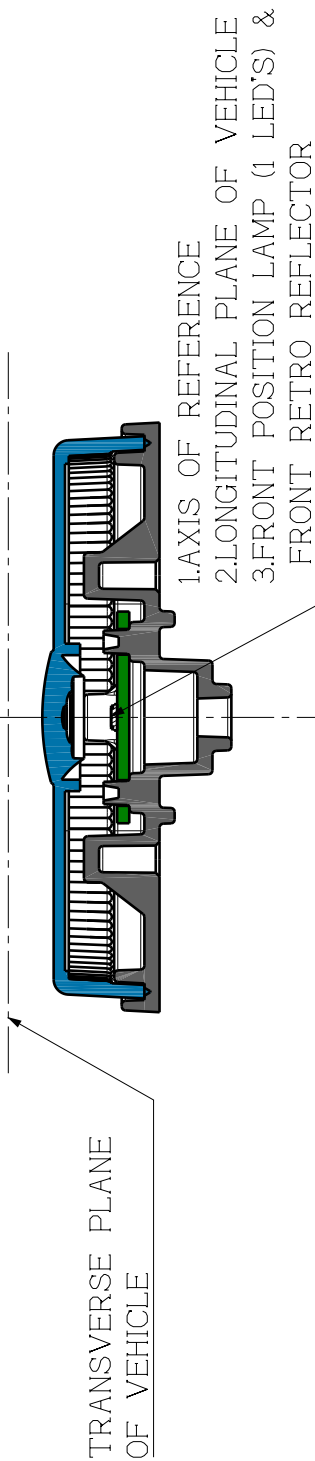


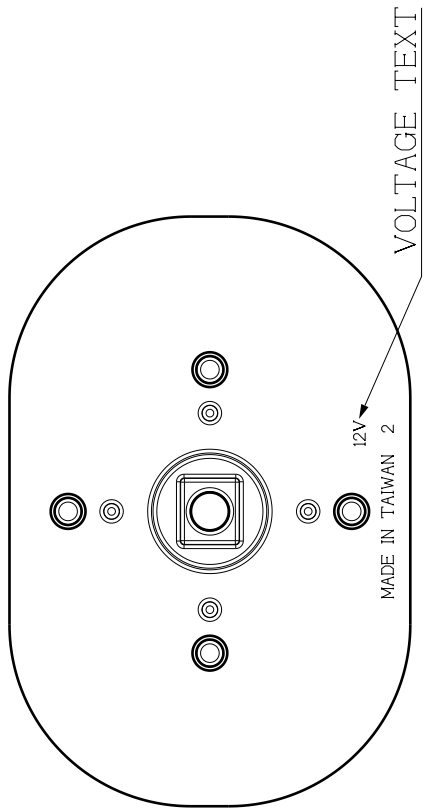
GENERAL TOLERANCE	
ASSEMBLY PARTS	
DIMENSION TOLERANCE	
≤100	±0.7
>100~≤300	±1.6
>300~≤1000	±2.5
>1000	±3.0
GENERAL TOLERANCES FOR NOMINAL DIMENSIONS WITHOUT SPECIFIED TOLERANCE	



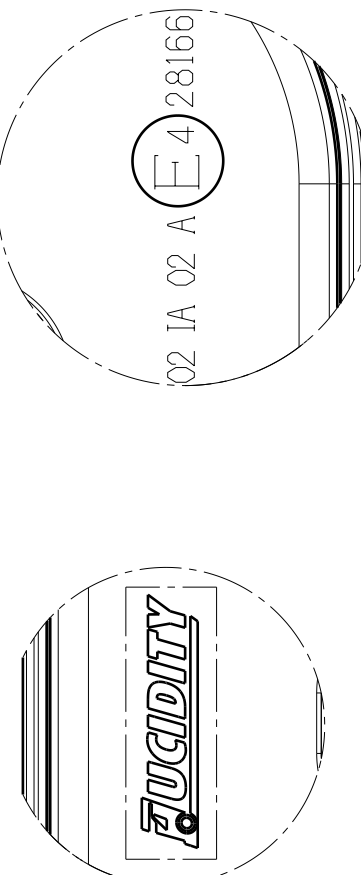
SECTION B-B (1 : 1)



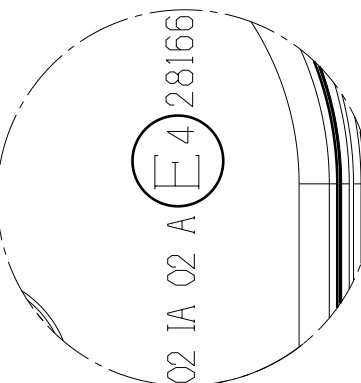
SECTION A-A (1 : 1)



BACK VIEW (1 : 1)



DETAIL C (2 : 1)



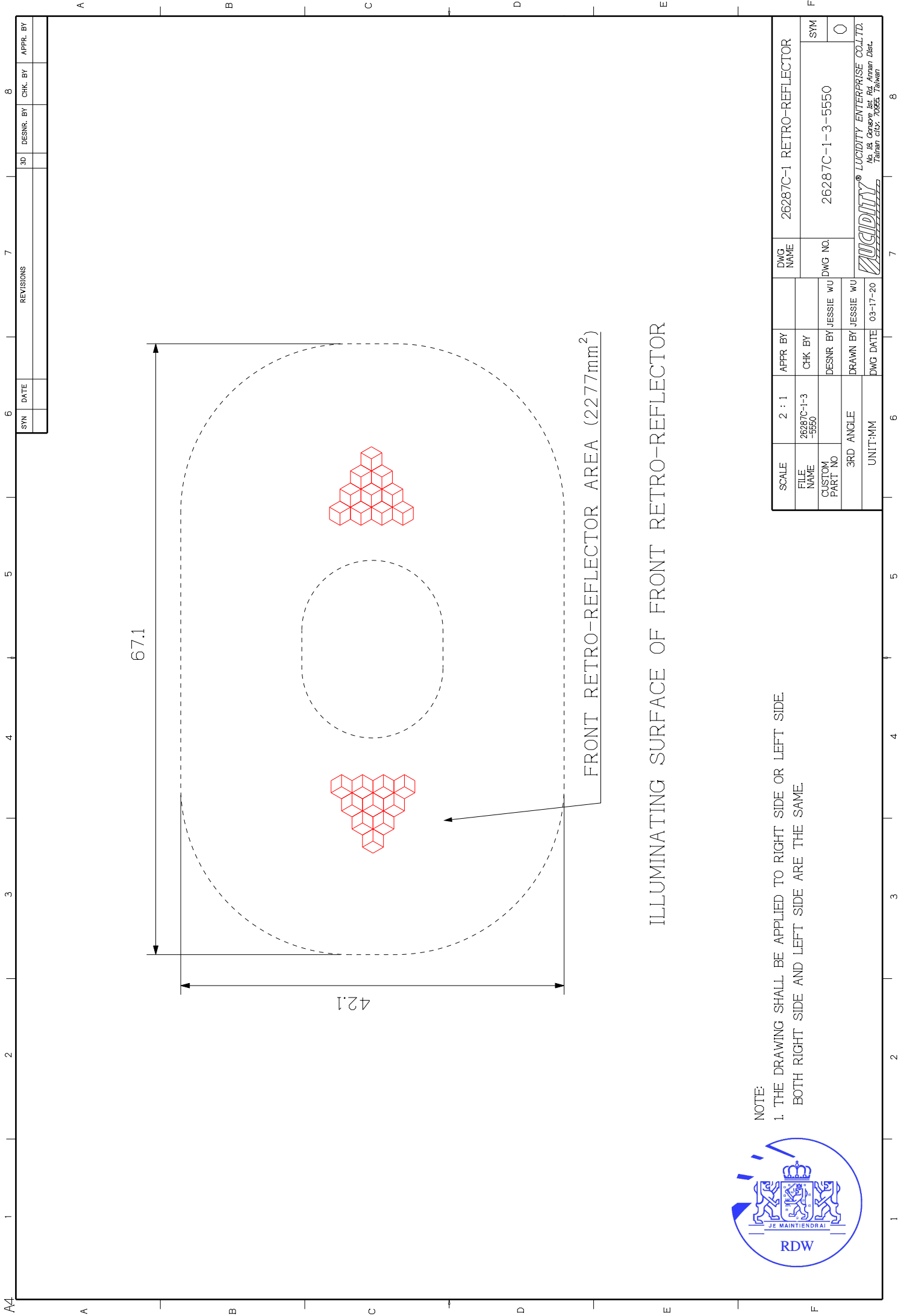
DETAIL D (2 : 1)

NOTE:

- 1.THE DRAWING SHALL BE APPLIED TO RIGHT SIDE OR LEFT SIDE. BOTH RIGHT SIDE AND LEFT SIDE ARE THE SAME.
- 2.THE LENS AND BASE WARE FIXED BY SUPERTORONIC WELDING.

SCALE	1 : 1	APPR BY	DWG NAME	26287C-1	ECE APPROVED
FILE NAME	26287C-1-1	CHK BY			
CUSTOM PART NO	-5500	DESNR BY	JESSIE WU	DWG NO.	26287C-1-1-5500
3RD ANGLE		DRAWN BY	JESSIE WU		
UNIT:mm		DWG DATE	03-20-20		

LUCIDITY
LUCIDITY ENTERPRISE CO.,LTD.
NO.18, GONGYE 1ST RD, ANNAN DIST.
TAINAN, Taiwan, R.O.C.



THE NETHERLANDS
(N E D E R L A N D)

COMMUNICATION

Concerning ⁽¹⁾:

- approval granted
- ~~approval extended~~
- ~~approval refused~~
- ~~approval withdrawn~~
- ~~production definitely discontinued~~

of a type of device pursuant to Regulation number 7.

Approval number: E4*7R02/27*28166*00

1. Trade name or mark of the device : LUCIDITY
2. Manufacturer's name for the type of device : 26287C-1
3. Manufacturer's name and address : Lucidity Enterprise Co., Ltd.
No.18, Gongye 1st Road, Annan District,
70955 Tainan-City Taiwan (ROC)
4. If applicable, name and address of the manufacturer's representative : Not applicable
5. Submitted for approval on : March 10, 2020
6. Technical service responsible for conducting approval tests : TÜV NORD Mobilität GmbH & Co. KG
IFM-Institut für Fahrzeugtechnik und Mobilität
Schönscheidtstrasse 28, D-45307 Essen
7. Date of report issued by that service : March 23, 2020
8. Number of report issued by that service : TW007-A0-200069

9. Concise description :
- 9.1. By category of lamp : A
- For mounting either outside or ~~inside~~
~~or both~~ ⁽¹⁾ : Outside
- Colour of light emitted : ~~red~~/white⁽¹⁾
- Number, category and kind of light source(s) : 1 x LED
- Voltage and wattage : 12 V, 0.85 W
- Light source module specific identification code : Not applicable
- Only for limited mounting height of equal to or less than 750mm above the ground : ~~Yes~~/no⁽¹⁾
- Geometrical conditions of installation and relating variations, if any : refer to the information folder
- Application of an electronic light source control gear/~~variable intensity control~~ : Not applicable
- (a) Being part of the lamp : ~~Yes~~/no⁽¹⁾
- (b) Being not part of the lamp : ~~Yes~~/no⁽¹⁾
- Input voltage(s) supplied by an electronic light source control gear/~~variable intensity control~~ : Not applicable
- Electronic light source control gear/~~variable intensity control~~ ⁽¹⁾ manufacturer and identification number (when the light source control gear is part of the lamp but is not included into the lamp body) : not applicable
- Variable luminous intensity : ~~Yes~~/no⁽¹⁾
- The front position lamp ⁽¹⁾, rear position lamp ⁽¹⁾, stop lamp ⁽¹⁾, end-outline marker lamp ⁽¹⁾ is only for use on a vehicle fitted with a tell-tale indicating failure : ~~Yes~~/no⁽¹⁾



9.2. Function(s) produced by an interdependent lamp forming part of an interdependent lamp system: Not applicable

Front position lamp : ~~yes/no~~⁽¹⁾

R1 Rear position lamp : ~~yes/no~~⁽¹⁾

R2 Rear position lamp : ~~yes/no~~⁽¹⁾

S1 Stop lamp : ~~yes/no~~⁽¹⁾

S2 Stop lamp : ~~yes/no~~⁽¹⁾

S3 Stop lamp : ~~yes/no~~⁽¹⁾

S4 Stop lamp : ~~yes/no~~⁽¹⁾

End-outline marker lamp : ~~yes/no~~⁽¹⁾

10. Position of the approval mark : On the lens

11. Reason(s) for extension (if applicable) : Not applicable

12. Approval : granted/~~extended/refused/withdrawn~~⁽¹⁾

13. Place : Zoetermeer

14. Date : 30 March 2020

15. Signature :


Uwe Löbig

16. The list of documents deposited with the Administrative Service which has granted approval is annexed to this communication and may be obtained on request.

⁽¹⁾ Strike out what does not apply.