

Index to the information package of a type approval with regard to a Regulation (UNECE) :

Last applicable Series of amendments	Base approval and update No	Extension No	Revision No	Issue date	Information document	
					Reference	Number of pages
R03-03	00	-	-	17.09.2020	LUCIDITY 26078LPLH-1 / 00	17

Approved and to be attached to the approval certificate,

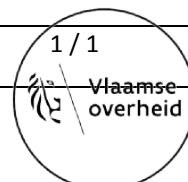


R. VERHELST

Updated Approval No:	E6*03R03/00*5217*00	BEVASYS :	202001274
Update No :	00	Issue date :	17.09.2020



**Vlaanderen**  
is mobiliteit &  
openbare werken





Communication concerning :

- Approval granted <sup>(1)</sup>
- ~~Approval extended~~ <sup>(1)</sup>
- ~~Approval refused~~ <sup>(1)</sup>
- ~~Approval withdrawn~~ <sup>(1)</sup>
- ~~Production definitively discontinued~~ <sup>(1)</sup>

of a type of retro-reflecting device, pursuant to Regulation No.03

Approval No : E6\*03R03/00\*5217\*00

Extension No : -

Approval mark : L IIIA 2a R1-S1 AR F1  
01 03 02 03 03 01 01

L IIIA 2a R1-S1 AR F1  
01 03 02 03 03 01 01



5217  
←

Left hand



5217  
→

Right hand

1. Trade name or mark of device :



2. Manufacturer's name for the type of device :

26078PLH-1, 26078PRH-1  
26078LPLH-1, 26078LPRH-1

3. Manufacturer's name and address :

Lucidity Enterprise Co., Ltd  
No. 18, Gong-Ye 1st Road, Annan District,  
70955 Tainan City, Taiwan / R.O.C.

4. If applicable, name and address of the manufacturer's representative :

-

5. Submitted for approval on :

24.08.2020 ~ 28.08.2020

6. Technical Service responsible for conducting approval test:

Vincotte N.V.  
Jan Olieslagerslaan 35  
1800 Vilvoorde  
Belgium

7. Date of test report:

17.09.2020

8. Number of test report :

H2060863653/120

9. Concise description : See information document
- ~~In isolation~~ / part of an assembly of devices <sup>(1)</sup>
- Colour of light emitted : ~~White~~ / Red / ~~Amber~~ <sup>(1)</sup>
- Installation as an integral part of a lamp which is integrated into the body of a vehicle : Yes / ~~No~~ <sup>(1)</sup>
- Geometric conditions of installation and relating variations, if any : See information document
- Only for limited mounting height of equal to or less than 750mm above the ground : ~~Yes~~ / No <sup>(1)</sup>
10. Position of approval mark : On the lamp
11. Reason(s) for extension (if applicable) : Not applicable
12. Approval granted / ~~extended~~ / ~~refused~~ / ~~withdrawn~~ <sup>(1)</sup>
13. Place : Brussels
14. Date : 17.09.2020
15. Signature :

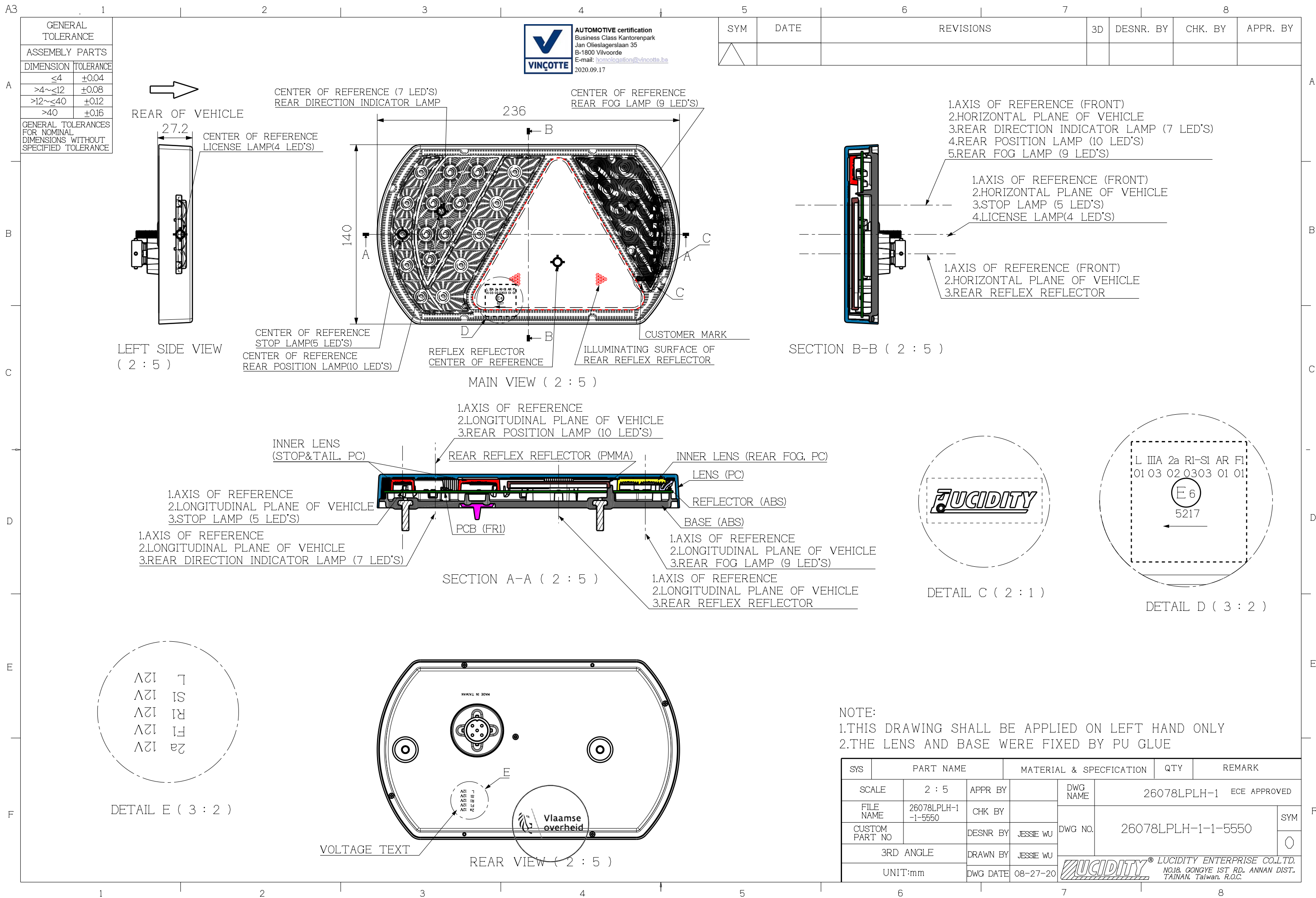
ON BEHALF OF THE SECRETARY-GENERAL:



R. VERHELST

16. The following documents, bearing the approval number shown above, are available on request.

(1) *Delete where not applicable*



F

A3

A

B

C

D

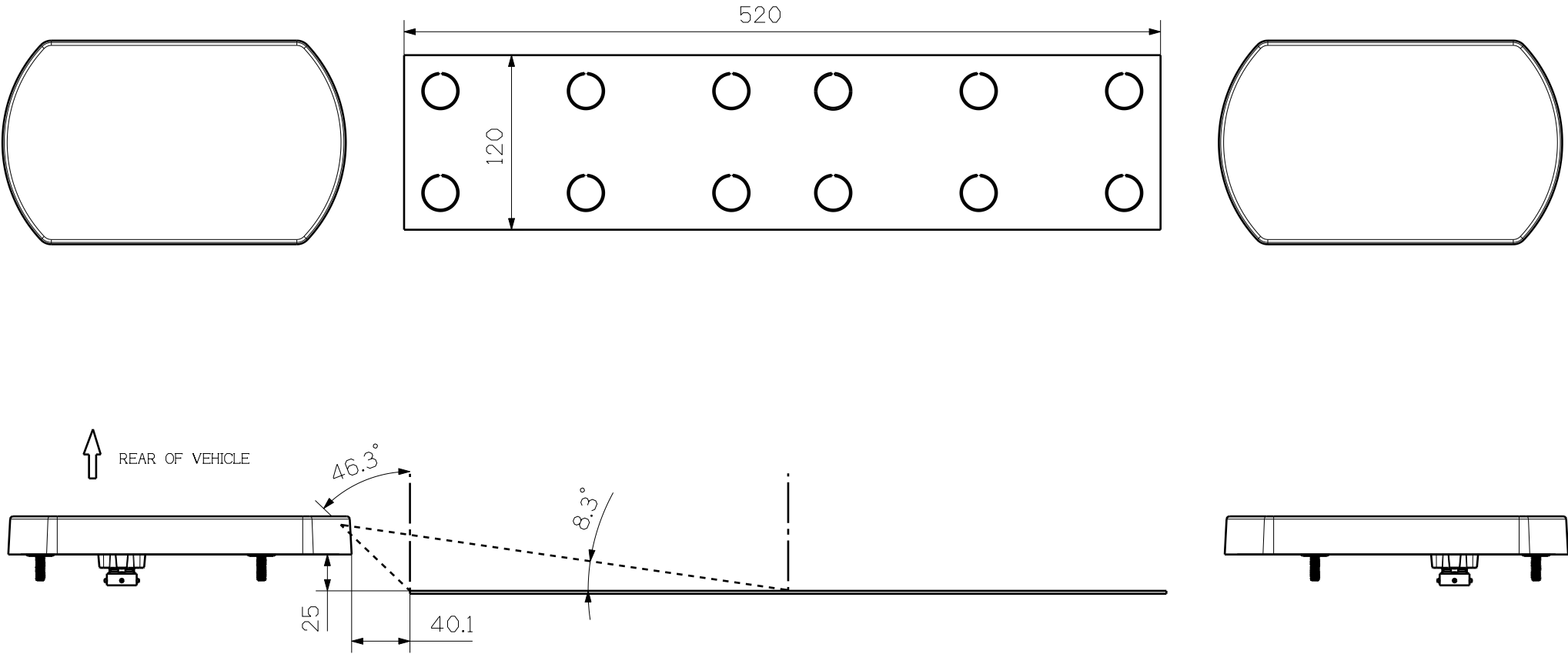
E

F


GENERAL TOLERANCE	
ASSEMBLY PARTS	
DIMENSION	TOLERANCE
≤4	±0.04
>4~≤12	±0.08
>12~≤40	±0.12
>40	±0.16
GENERAL TOLERANCES FOR NOMINAL DIMENSIONS WITHOUT SPECIFIED TOLERANCE	



SYM	DATE	REVISIONS	3D	DESNR. BY	CHK. BY	APPR. BY
△						



NOTE:  
1.THE DRAWING SHOW THE POSITION OF LICENSE PLATE  
2.DEVICES FOR ILLUMINATING A TALL PLATE(520x120)  
3.ANGLE OF THE INCIDENCE OF THE LIGHT = 81.7°

SYS	PART NAME		MATERIAL & SPECIFICATION		QTY	REMARK	
SCALE	1 : 4	APPR BY		DWG NAME	26078LPLH-1 ECE APPROVED		
FILE NAME	26078LPLH-1-4-5550	CHK BY		DWG NO.	26078LPLH-1-4-5550		SYM
CUSTOM PART NO		DESNR BY	JESSIE WU				O
3RD ANGLE		DRAWN BY	JESSIE WU				
UNIT:mm		DWG DATE	08-27-20	 LUCIDITY ENTERPRISE CO.,LTD. NO.18, GONGYE 1ST RD. ANNAN DIST. TAINAN, Taiwan, R.O.C.			

A

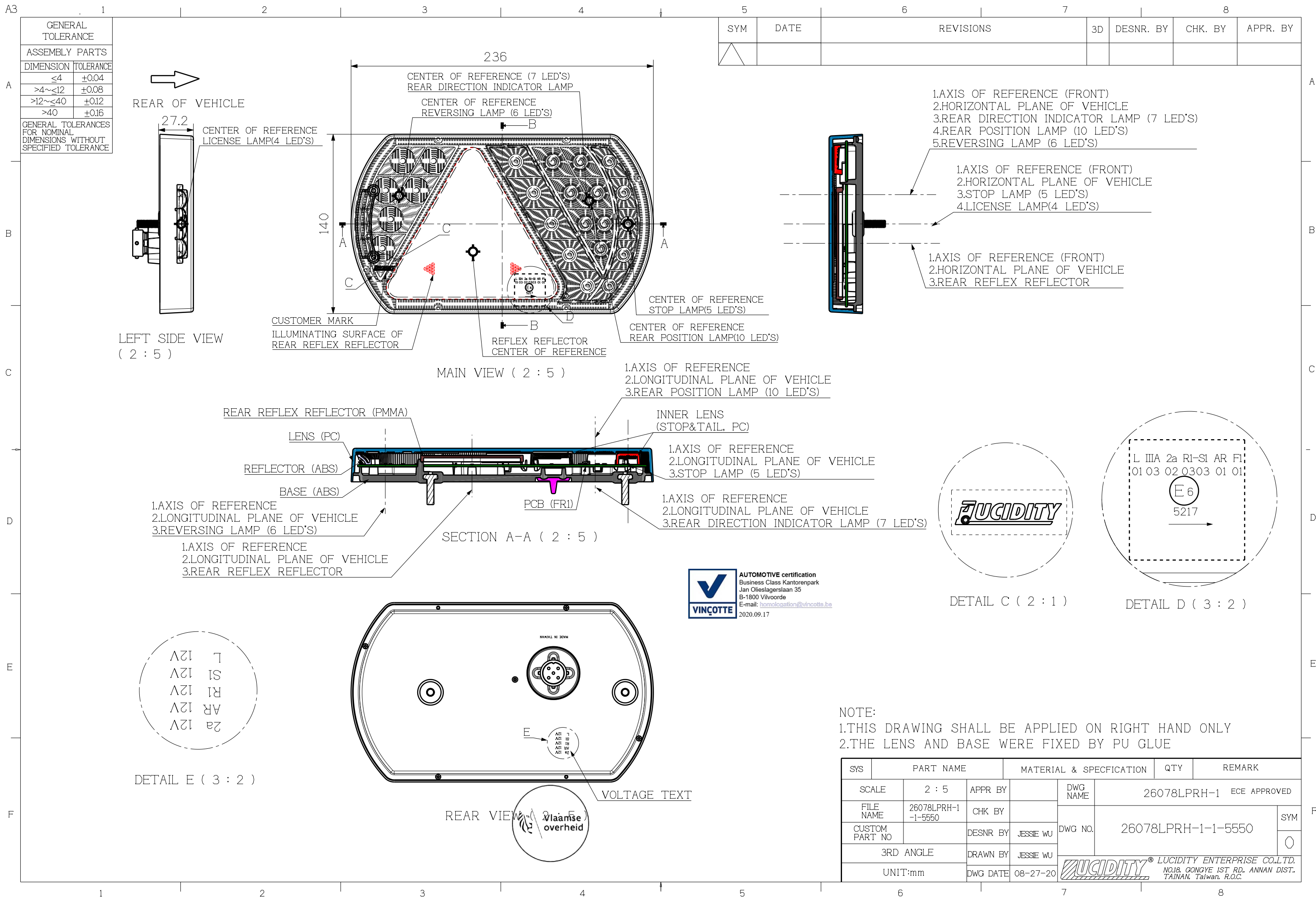
B

C

D

E

F










SYM	DATE	REVISIONS	3D	DESNR. BY	CHK. BY	APPR. BY
△						



SYS	PART NAME		MATERIAL & SPECIFICATION		QTY	REMARK	
SCALE	1 : 4	APPR BY		DWG NAME	26078LPRH-1 ECE APPROVED		
FILE NAME	26078LPRH-1-4-5550	CHK BY		DWG NO.	26078LPRH-1-4-5550		SYM ○
CUSTOM PART NO		DESNR BY	JESSIE WU				
3RD ANGLE		DRAWN BY	JESSIE WU				
UNIT:mm		DWG DATE	08-27-20	 <b>LUCIDITY®</b> LUCIDITY ENTERPRISE CO.,LTD. NO.18, GONGYE 1ST RD., ANNAN DIST., TAINAN, Taiwan, R.O.C.			

A3

A

B

C

D

E

F

GENERAL TOLERANCE	
ASSEMBLY PARTS	
DIMENSION	TOLERANCE
≤4	±0.04
>4~≤12	±0.08
>12~≤40	±0.12
>40	±0.16
GENERAL TOLERANCES FOR NOMINAL DIMENSIONS WITHOUT SPECIFIED TOLERANCE	

REAR OF VEHICLE

27.2

LEFT SIDE VIEW  
( 2 : 5 )CENTER OF REFERENCE (7 LED'S)  
REAR DIRECTION INDICATOR LAMPCENTER OF REFERENCE  
REAR FOG LAMP (9 LED'S)

236

140

CENTER OF REFERENCE  
STOP LAMP(6 LED'S)  
CENTER OF REFERENCE  
REAR POSITION LAMP(10 LED'S)REFLEX REFLECTOR  
CENTER OF REFERENCEILLUMINATING SURFACE OF  
REAR REFLEX REFLECTOR

CUSTOMER MARK

MAIN VIEW ( 2 : 5 )

1.AXIS OF REFERENCE  
2.LONGITUDINAL PLANE OF VEHICLE  
3.REAR POSITION LAMP (10 LED'S)INNER LENS  
(STOP&TAIL, PC)

REAR REFLEX REFLECTOR (PMMA)

INNER LENS (REAR FOG, PC)

LENS (PC)

REFLECTOR (ABS)

BASE (ABS)

1.AXIS OF REFERENCE  
2.LONGITUDINAL PLANE OF VEHICLE  
3.STOP LAMP (5 LED'S)1.AXIS OF REFERENCE  
2.LONGITUDINAL PLANE OF VEHICLE  
3.REAR DIRECTION INDICATOR LAMP (7 LED'S)

SECTION A-A ( 2 : 5 )

1.AXIS OF REFERENCE  
2.LONGITUDINAL PLANE OF VEHICLE  
3.REAR FOG LAMP (9 LED'S)1.AXIS OF REFERENCE  
2.LONGITUDINAL PLANE OF VEHICLE  
3.REAR REFLEX REFLECTOR

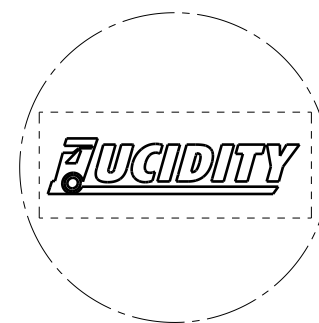
AUTOMOTIVE certification  
Business Class Kantorenpark  
Jan Olieslagerslaan 35  
B-1800 Vilvoorde  
E-mail: [homologation@vincotte.be](mailto:homologation@vincotte.be)  
2020.09.17

1.AXIS OF REFERENCE (FRONT)  
2.HORIZONTAL PLANE OF VEHICLE  
3.REAR DIRECTION INDICATOR LAMP (7 LED'S)  
4.REAR POSITION LAMP (10 LED'S)  
5.REAR FOG LAMP (9 LED'S)

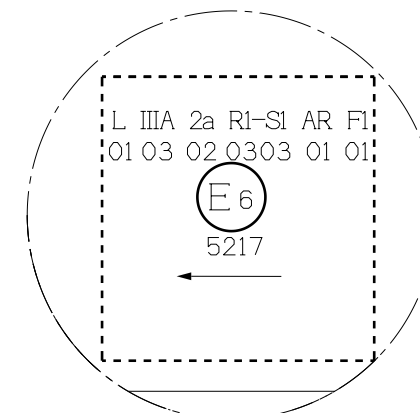
1.AXIS OF REFERENCE (FRONT)  
2.HORIZONTAL PLANE OF VEHICLE  
3.STOP LAMP (5 LED'S)

1.AXIS OF REFERENCE (FRONT)  
2.HORIZONTAL PLANE OF VEHICLE  
3.REAR REFLEX REFLECTOR

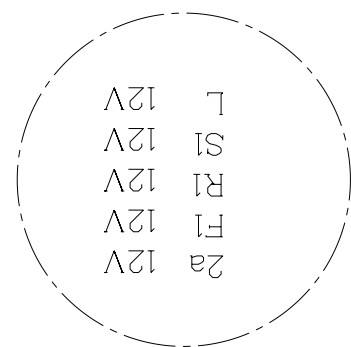
SECTION B-B ( 2 : 5 )



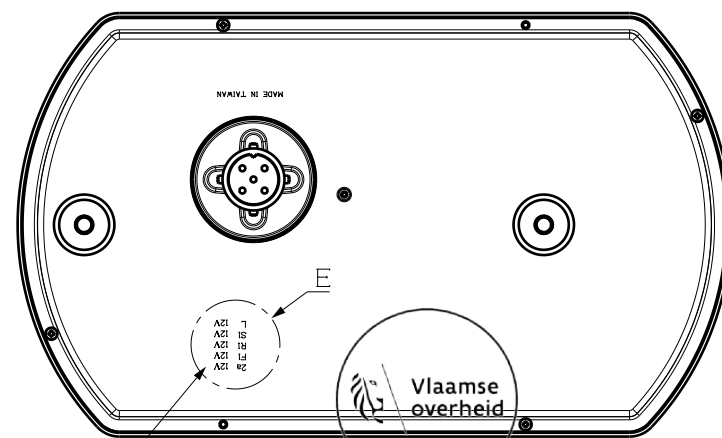
DETAIL C ( 2 : 1 )



DETAIL D ( 3 : 2 )



DETAIL E ( 3 : 2 )



VOLTAGE TEXT

REAR VIEW ( 2 : 5 )

NOTE:

- 1.THIS DRAWING SHALL BE APPLIED ON LEFT HAND ONLY  
2.THE LENS AND BASE WERE FIXED BY PU GLUE

SYS	PART NAME	MATERIAL & SPECIFICATION	QTY	REMARK
SCALE	2 : 5	APPR BY	DWG NAME	26078PLH-1 ECE APPROVED
FILE NAME	26078PLH-1-1-5550	CHK BY	DWG NO.	26078PLH-1-1-5550
CUSTOM PART NO		DESNR BY JESSIE WU		
3RD ANGLE		DRAWN BY JESSIE WU		
UNIT:mm		DWG DATE 08-31-20		

**LUCIDITY** LUCIDITY ENTERPRISE CO.,LTD.  
NO.18, GONGYE 1ST RD., ANNAN DIST.,  
TAINAN, Taiwan, R.O.C.

A3

A

B

C

D

E

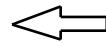
F

GENERAL TOLERANCE	
ASSEMBLY PARTS	
DIMENSION	TOLERANCE
≤4	±0.04
>4~≤12	±0.08
>12~≤40	±0.12
>40	±0.16
GENERAL TOLERANCES FOR NOMINAL DIMENSIONS WITHOUT SPECIFIED TOLERANCE	



**AUTOMOTIVE certification**  
Business Class Kantorenpark  
Jan Olieslagerslaan 35  
B-1800 Vilvoorde  
E-mail: [homologation@vincotte.be](mailto:homologation@vincotte.be)  
2020.09.17

SYM	DATE	REVISIONS	3D	DESNR. BY	CHK. BY	APPR. BY
△						



REAR OF VEHICLE

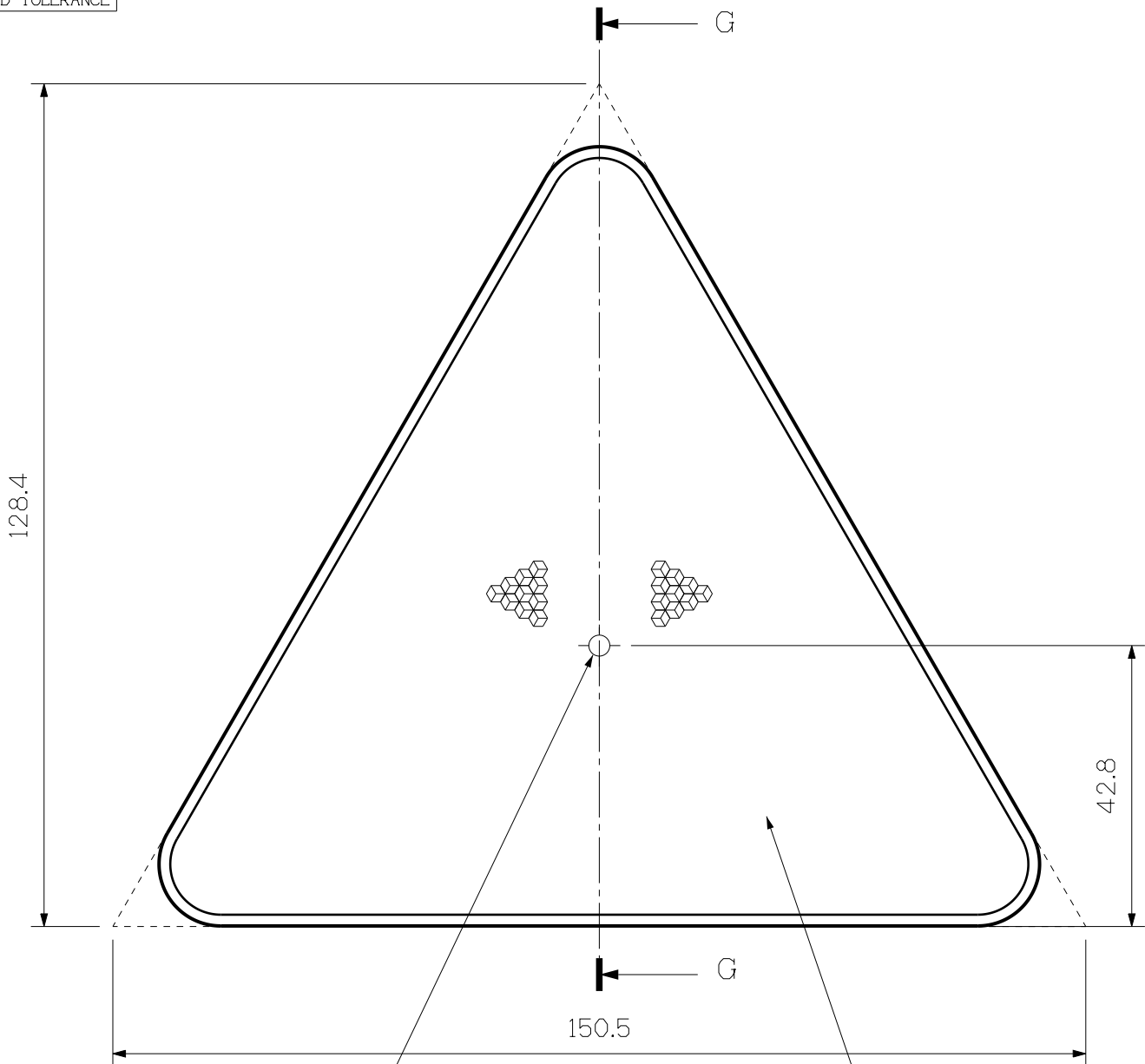


RIGHT SIDE VIEW ( 1 : 1 )



SECTION G-G ( 1 : 1 )

- 1.REFERENCE AXIS(FRONT)
- 2.HORIZONTAL PLANE OF VEHICLE
- 3.REFLEX REFLECTOR (RED)




MAIN VIEW

REFLEX REFLECTOR  
CENTER OF REFERENCE

ILLUMINATING SURFACE OF  
REAR REFLEX REFLECTOR  
AREA : 8,535mm<sup>2</sup>



SYS	PART NAME		MATERIAL & SPECIFICATION		QTY	REMARK		
	SCALE	1 : 1	APPR BY		DWG NAME	26078PLH-1 ECE APPROVED		
	FILE NAME	26078PLH-1-2-5550	CHK BY		DWG NO.	26078PLH-1-2-5550		SYM
	CUSTOM PART NO		DESNR BY	JESSIE WU				
	3RD ANGLE		DRAWN BY	JESSIE WU		 LUCIDITY ENTERPRISE CO.,LTD. NO.18, GONGYE 1ST RD. ANNAN DIST. TAINAN, Taiwan, R.O.C.		
	UNIT:mm		DWG DATE	08-31-20				

A

B

C

D

E

F

1

2

3

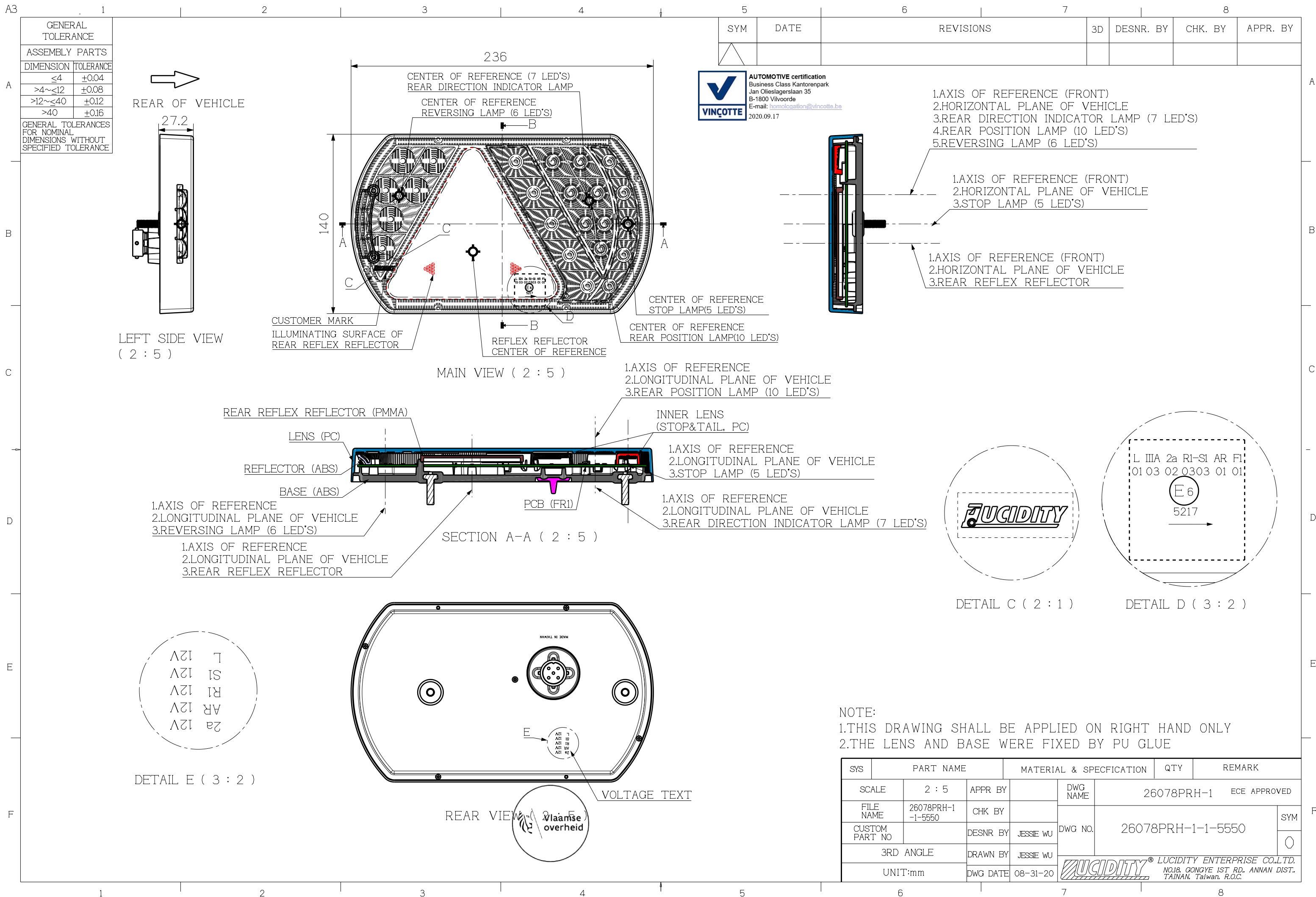
4

5

6

7

8



F