

Index to the information package of a type approval with regard to a Regulation (UNECE) :

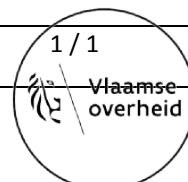
Last applicable Series of amendments	Base approval and update No	Extension No	Revision No	Issue date	Information document	
					Reference	Number of pages
R07-03	00	-	-	17.09.2020	LUCIDITY 26078LPLH-1 / 00	17

Approved and to be attached to the approval certificate,



R. VERHELST

Updated Approval No: E6*07R03/00*5217*00		BEVASYS : 202001277
Update No : 00	Issue date : 17.09.2020	1 / 1





Communication concerning :

- Approval granted ⁽¹⁾
- ~~Approval extended~~ ⁽¹⁾
- ~~Approval refused~~ ⁽¹⁾
- ~~Approval withdrawn~~ ⁽¹⁾
- ~~Production definitively discontinued~~ ⁽¹⁾

of a type of device, pursuant to Regulation No.07

Approval No : E6*07R03/00*5217*00

Extension No : -

Approval mark :	L	IIIA	2a	R1-S1	AR	F1		L	IIIA	2a	R1-S1	AR	F1
	01	03	02	03 03	01	01		01	03	02	03 03	01	01



5217




Left hand



5217



Right hand

- | | | |
|----|--|---|
| 1. | Trade name or mark of device : |  |
| 2. | Manufacturer's name for the type of device : | 26078PLH-1, 26078PRH-1
26078LPLH-1, 26078LPRH-1 |
| 3. | Manufacturer's name and address : | Lucidity Enterprise Co., Ltd
No. 18, Gong-Ye 1st Road, Annan District,
70955 Tainan City, Taiwan / R.O.C. |
| 4. | If applicable, name and address of the manufacturer's representative : | - |
| 5. | Submitted for approval on : | 22.08.2020 ~ 28.08.2020 |
| 6. | Technical Service responsible for conducting approval test: | Vincotte N.V.
Jan Olieslagerslaan 35
1800 Vilvoorde
Belgium |
| 7. | Date of report issued by that Service: | 17.09.2020 |
| 8. | Number of report issued by that Service : | H2060863653/123 |

9.	Concise description :	See information document
9.1.	By category of lamp :	R1-S1
	For mounting either outside or inside or both ⁽¹⁾	
	Colour of light emitted :	White / Red ⁽¹⁾
	Number, category and kind of light source(s) :	10 LEDs / 10 light sources for rear position lamp 5 LEDs / 5 light sources for stop lamp
	Voltage and wattage :	12V, 0.5W for rear position lamp (or 12V, 1.5W for rear position lamp with registration plate lamp) 12V, 2W for stop lamp
	Light source module specific identification code :	Not applicable
	Only for limited mounting height of equal to or less than 750mm above the ground :	Yes / No ⁽¹⁾
	Geometrical conditions of installation and relating variations, if any :	See information document
	Application of an electronic light source control gear / variable intensity control :	
	(a) Being part of the lamp :	Yes / No ⁽¹⁾
	(b) Being not part of the lamp :	Yes / No ⁽¹⁾
	Input voltage(s) supplied by an electronic light source control gear / variable intensity control :	Not applicable
	Electronic light source control gear/variable intensity control manufacturer and identification number (when the light source control gear is part of the lamp but is not included into the lamp body) :	Not applicable
	Variable luminous intensity :	Yes / No ⁽¹⁾
	The front position lamp, rear position lamp, stop lamp, end-outline marker lamp ⁽¹⁾ is only for use on a vehicle fitted with a tell-tale indicating failure :	Yes / No ⁽¹⁾
9.2.	Function(s) produced by an interdependent lamp forming part of an interdependent lamp system :	
	Front position lamp :	Yes / No ⁽¹⁾
	R1 Rear position lamp :	Yes / No ⁽¹⁾
	R2 Rear position lamp :	Yes / No ⁽¹⁾
	S1 Stop lamp :	Yes / No ⁽¹⁾
	S2 Stop lamp :	Yes / No ⁽¹⁾
	S3 Stop lamp :	Yes / No ⁽¹⁾
	S4 Stop lamp :	Yes / No ⁽¹⁾
	End-outline marker lamp :	Yes / No ⁽¹⁾
10.	Position of approval mark :	On the lamp
11.	Reason(s) for extension (if applicable) :	Not applicable
12.	Approval granted / extended / refused / withdrawn ⁽¹⁾	

13. Place : Brussels
14. Date : 17.09.2020
15. Signature :

ON BEHALF OF THE SECRETARY-GENERAL:

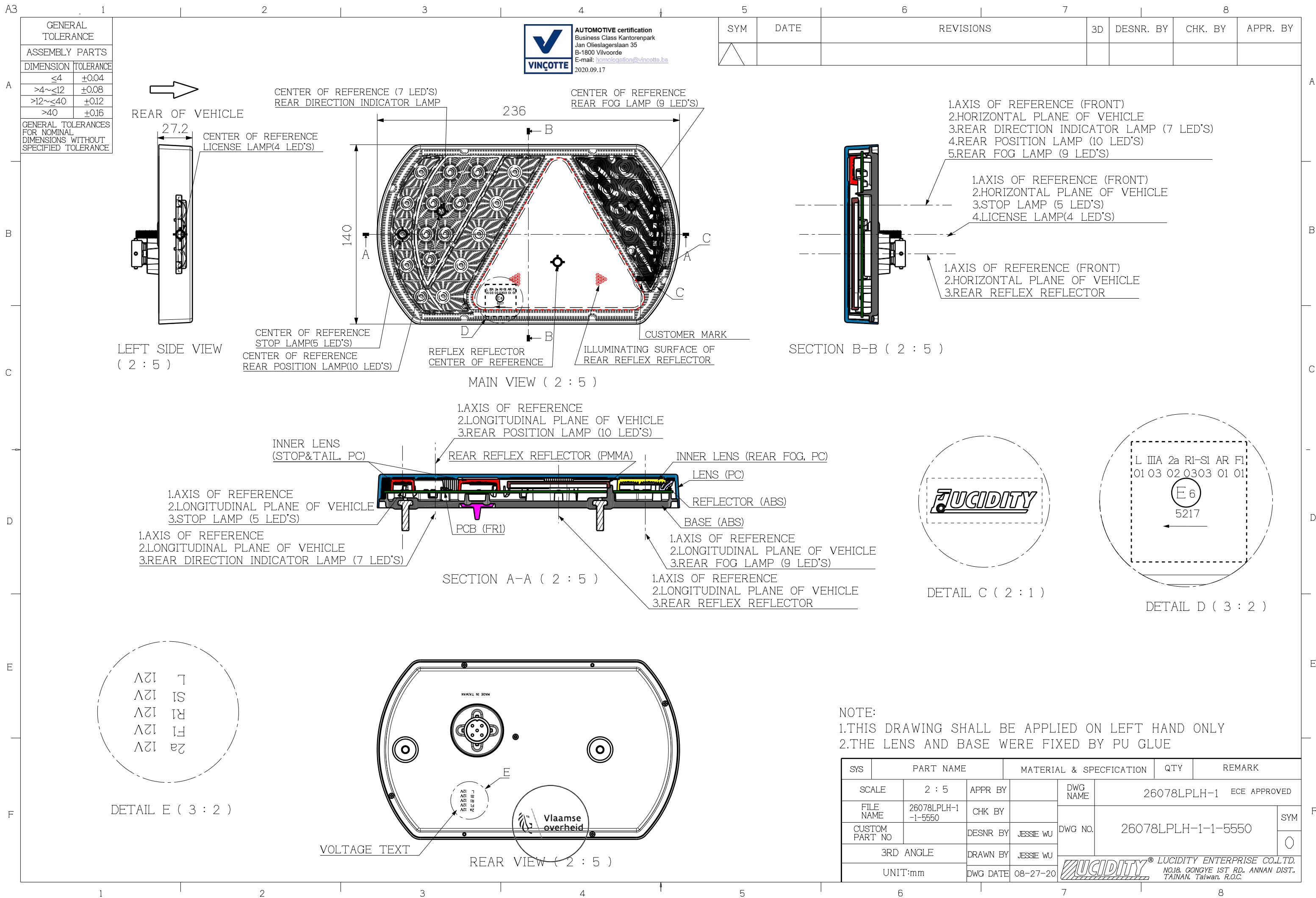


A handwritten signature in blue ink, reading 'Verhelst'.

R. VERHELST

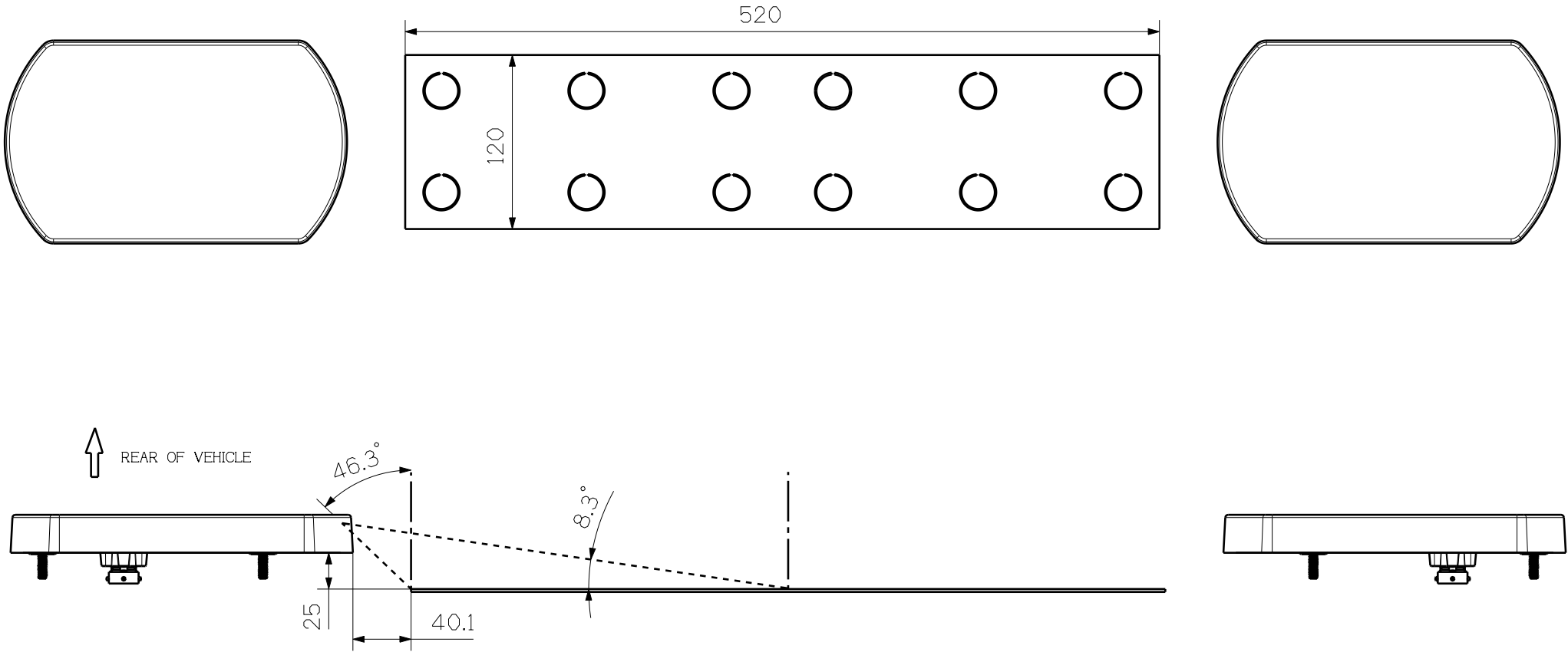
16. The list of documents deposited with the Administrative Service, which has granted approval, is annexed to this communication and may be obtained on request.

(1) *Strike out what does not apply*




1

SYM	DATE	REVISIONS	3D	DESNR. BY	CHK. BY	APPR. BY

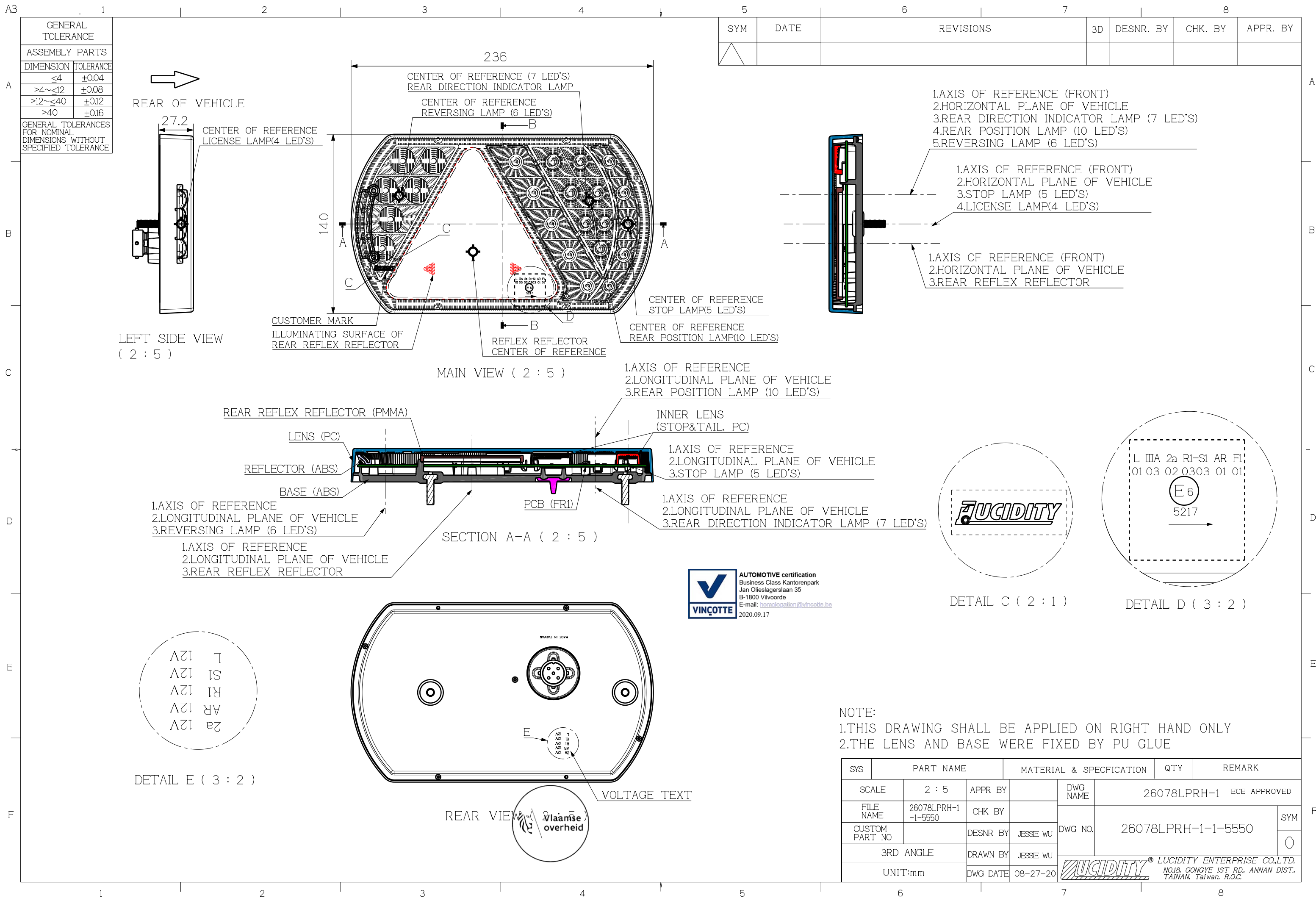


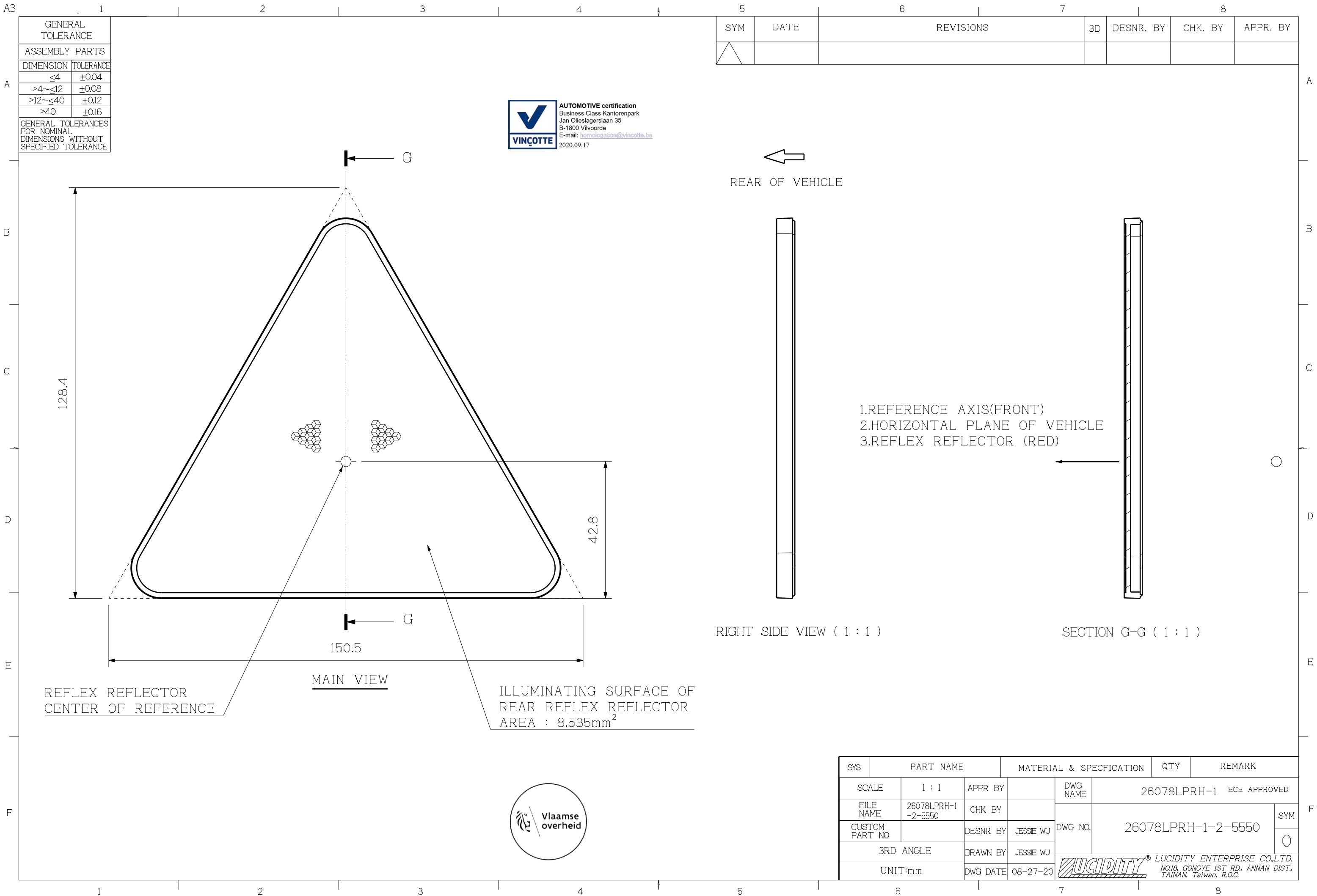
NOTE:

- 1.THE DRAWING SHOW THE POSITION OF LICENSE PLATE
- 2.DEVICES FOR ILLUMINATING A TALL PLATE(520x120)
- 3.ANGLE OF THE INCIDENCE OF THE LIGHT = 81.7°

SYS	PART NAME		MATERIAL & SPECIFICATION		QTY	REMARK	
SCALE	1 : 4	APPR BY		DWG NAME	26078LPLH-1 ECE APPROVED		
FILE NAME	26078LPLH-1-4-5550	CHK BY		DWG NO.	26078LPLH-1-4-5550		SYM O
CUSTOM PART NO		DESNR BY	JESSIE WU				
3RD ANGLE		DRAWN BY	JESSIE WU				
UNIT:mm		DWG DATE	08-27-20	 LUCIDITY[®] LUCIDITY ENTERPRISE CO.,LTD. NO.18, GONGYE 1ST RD., ANNAN DIST. TAINAN, Taiwan, R.O.C.			







A3

A

B

C

D

E

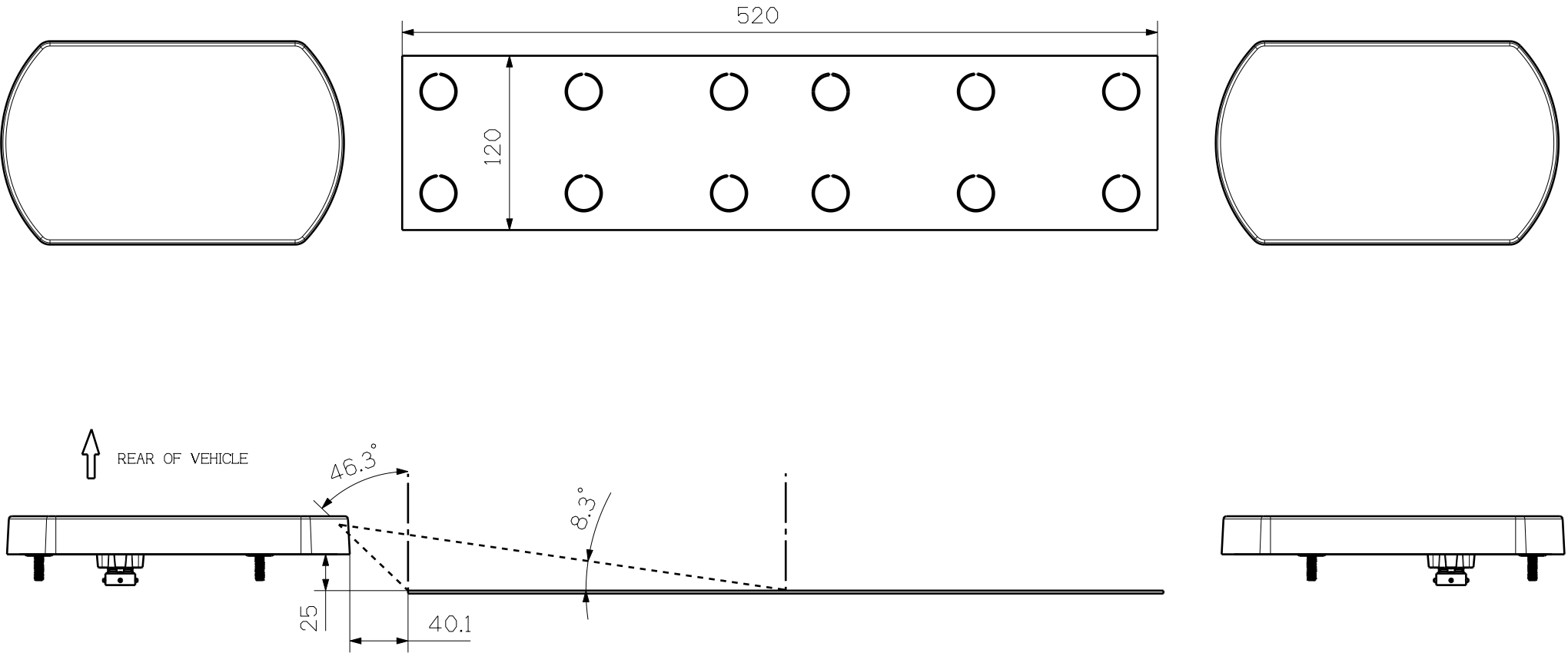
F

GENERAL TOLERANCE	
ASSEMBLY PARTS	
DIMENSION	TOLERANCE
≤4	±0.04
>4~≤12	±0.08
>12~≤40	±0.12
>40	±0.16
GENERAL TOLERANCES FOR NOMINAL DIMENSIONS WITHOUT SPECIFIED TOLERANCE	




AUTOMOTIVE certification
Business Class Kantorenpark
Jan Olieslagerslaan 35
B-1800 Vilvoorde
E-mail: vincologation@vincotte.be
2020.09.17

SYM	DATE	REVISIONS	3D	DESNR. BY	CHK. BY	APPR. BY
△						



NOTE:
1.THE DRAWING SHOW THE POSITION OF LICENSE PLATE
2.DEVICES FOR ILLUMINATING A TALL PLATE(520x120)
3.ANGLE OF THE INCIDENCE OF THE LIGHT = 81.7°

SYS	PART NAME		MATERIAL & SPECIFICATION		QTY	REMARK	
SCALE	1 : 4	APPR BY		DWG NAME	26078LPRH-1 ECE APPROVED		
FILE NAME	26078LPRH-1-4-5550	CHK BY		DWG NO.	26078LPRH-1-4-5550		SYM
CUSTOM PART NO		DESNR BY	JESSIE WU				
3RD ANGLE		DRAWN BY	JESSIE WU				
UNIT:mm		DWG DATE	08-27-20	 LUCIDITY ENTERPRISE CO.,LTD. NO.18, GONGYE 1ST RD. ANNAN DIST. TAINAN, Taiwan, R.O.C.			

A3

A

B

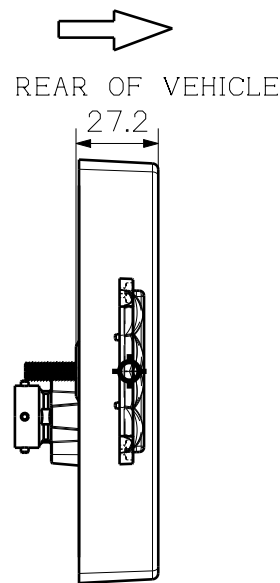
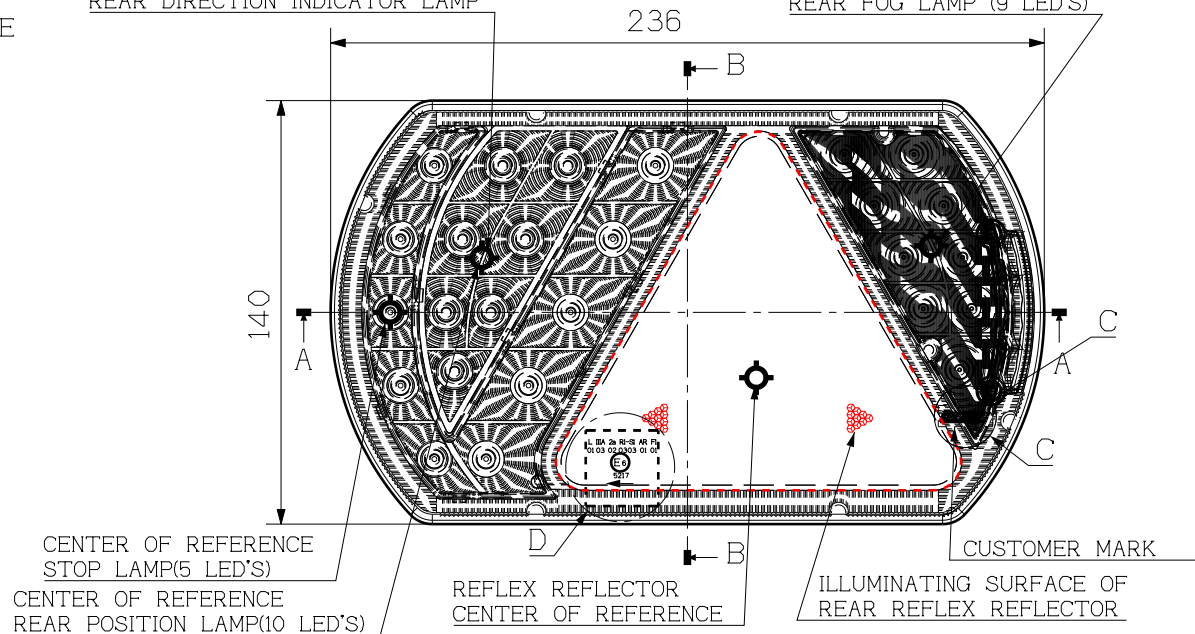
C

D

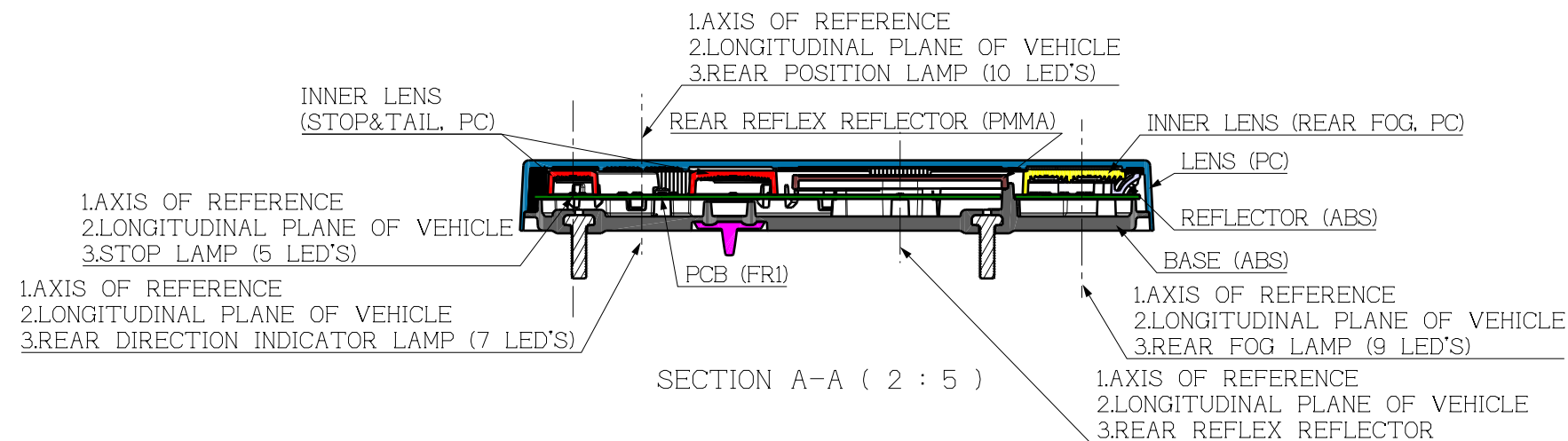
E

F

GENERAL TOLERANCE	
ASSEMBLY PARTS	
DIMENSION	TOLERANCE
≤4	±0.04
>4~≤12	±0.08
>12~≤40	±0.12
>40	±0.16
GENERAL TOLERANCES FOR NOMINAL DIMENSIONS WITHOUT SPECIFIED TOLERANCE	

LEFT SIDE VIEW
(2 : 5)CENTER OF REFERENCE (7 LED'S)
REAR DIRECTION INDICATOR LAMPCENTER OF REFERENCE
REAR FOG LAMP (9 LED'S)

MAIN VIEW (2 : 5)



SECTION A-A (2 : 5)

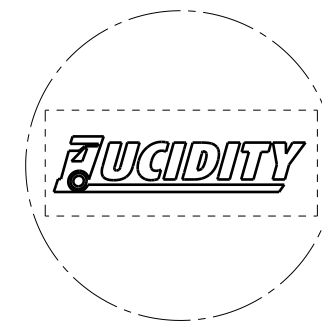


1.AXIS OF REFERENCE (FRONT)
2.HORIZONTAL PLANE OF VEHICLE
3.REAR DIRECTION INDICATOR LAMP (7 LED'S)
4.REAR POSITION LAMP (10 LED'S)
5.REAR FOG LAMP (9 LED'S)

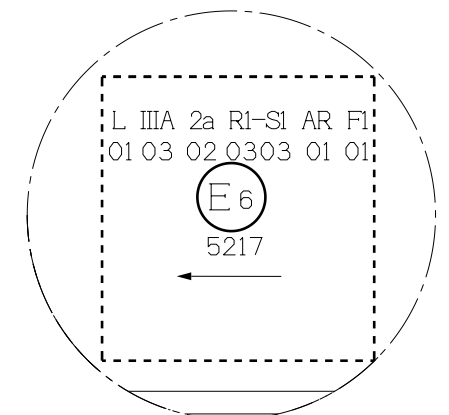
1.AXIS OF REFERENCE (FRONT)
2.HORIZONTAL PLANE OF VEHICLE
3.STOP LAMP (5 LED'S)

1.AXIS OF REFERENCE (FRONT)
2.HORIZONTAL PLANE OF VEHICLE
3.REAR REFLEX REFLECTOR

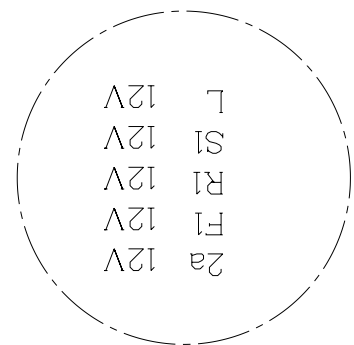
SECTION B-B (2 : 5)



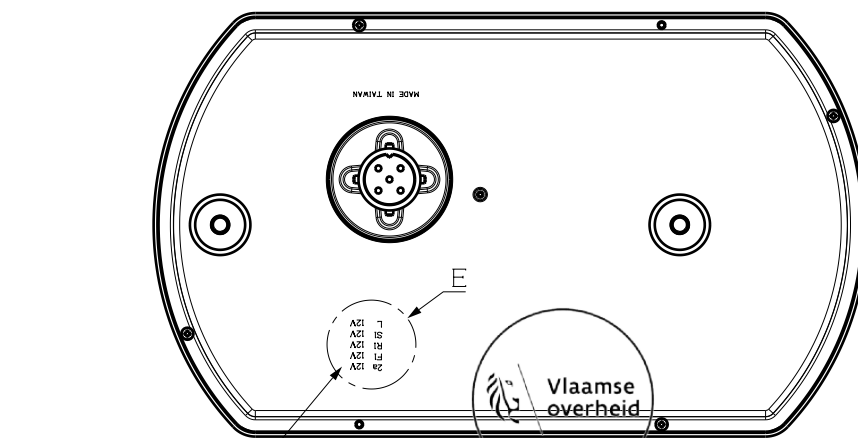
DETAIL C (2 : 1)



DETAIL D (3 : 2)



DETAIL E (3 : 2)



VOLTAGE TEXT

REAR VIEW (2 : 5)

NOTE:

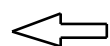
- 1.THIS DRAWING SHALL BE APPLIED ON LEFT HAND ONLY
2.THE LENS AND BASE WERE FIXED BY PU GLUE

SYS	PART NAME	MATERIAL & SPECIFICATION	QTY	REMARK
SCALE	2 : 5	APPR BY	DWG NAME	26078PLH-1 ECE APPROVED
FILE NAME	26078PLH-1-1-5550	CHK BY	DWG NO.	26078PLH-1-1-5550
CUSTOM PART NO		DESNR BY JESSIE WU		
3RD ANGLE		DRAWN BY JESSIE WU		
UNIT:mm		DWG DATE 08-31-20		

LUCIDITY LUCIDITY ENTERPRISE CO.,LTD.
NO.18, GONGYE 1ST RD., ANNAN DIST.
TAINAN, Taiwan, R.O.C.

 **AUTOMOTIVE certification**
 Business Class Kantorenpark
 Jan Olieslagerslaan 35
 B-1800 Vilvoorde
 E-mail: homologation@vincotte.be
 2020.09.17

SYM	DATE	REVISIONS	3D	DESNR. BY	CHK. BY	APPR. BY



REAR OF VEHICLE



RIGHT SIDE VIEW (1 : 1)



SECTION G-G (1 : 1)


- 1.REFERENCE AXIS(FRONT)
- 2.HORIZONTAL PLANE OF VEHICLE
- 3.REFLEX REFLECTOR (RED)

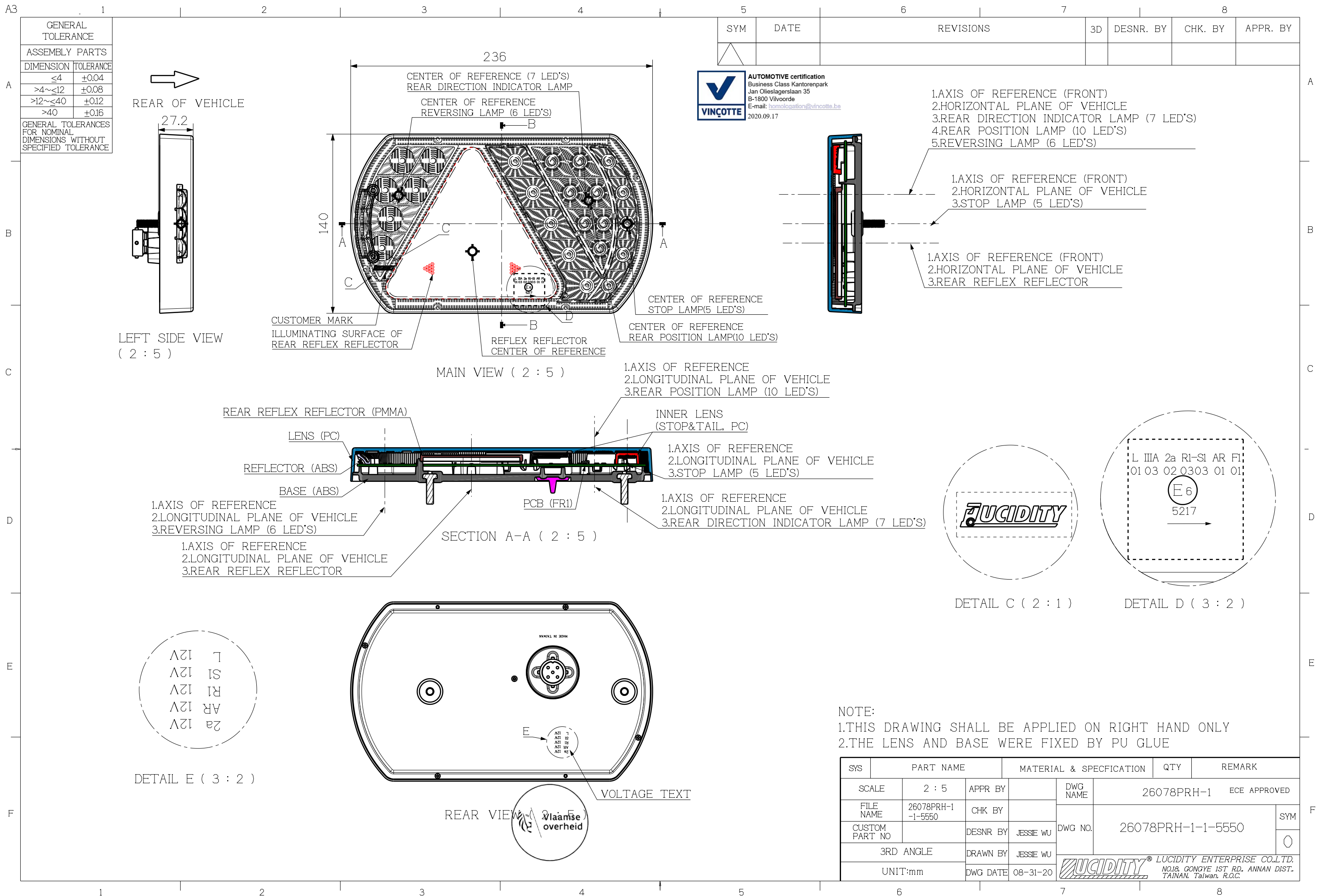
REFLEX REFLECTOR
CENTER OF REFERENCE

MAIN VIEW

ILLUMINATING SURFACE OF
REAR REFLEX REFLECTOR
AREA : 8,535mm²



SYS	PART NAME		MATERIAL & SPECIFICATION		QTY	REMARK	
SCALE	1 : 1	APPR BY		DWG NAME	26078PLH-1		ECE APPROVED
FILE NAME	26078PLH-1 -2-5550	CHK BY		DWG NO.	26078PLH-1-2-5550		SYM
CUSTOM PART NO		DESNR BY	JESSIE WU				
3RD ANGLE		DRAWN BY	JESSIE WU				
UNIT:mm		DWG DATE	08-31-20	 LUCIDITY® LUCIDITY ENTERPRISE CO.,LTD. NO.18, GONGYE 1ST RD., ANNAN DIST., TAINAN, Taiwan, R.O.C.			



F