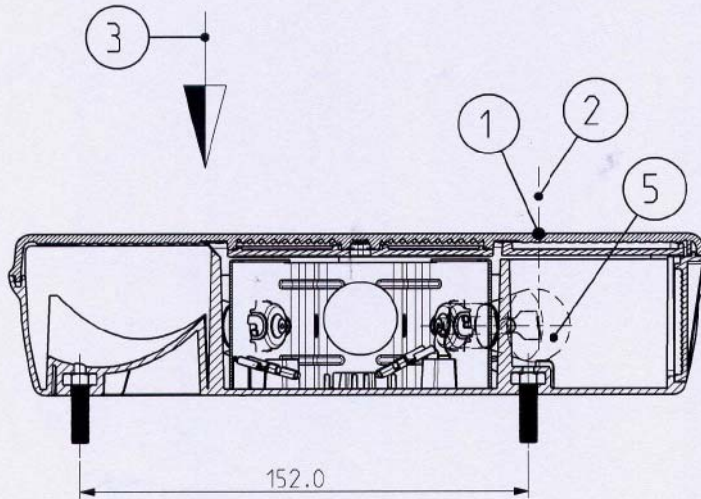
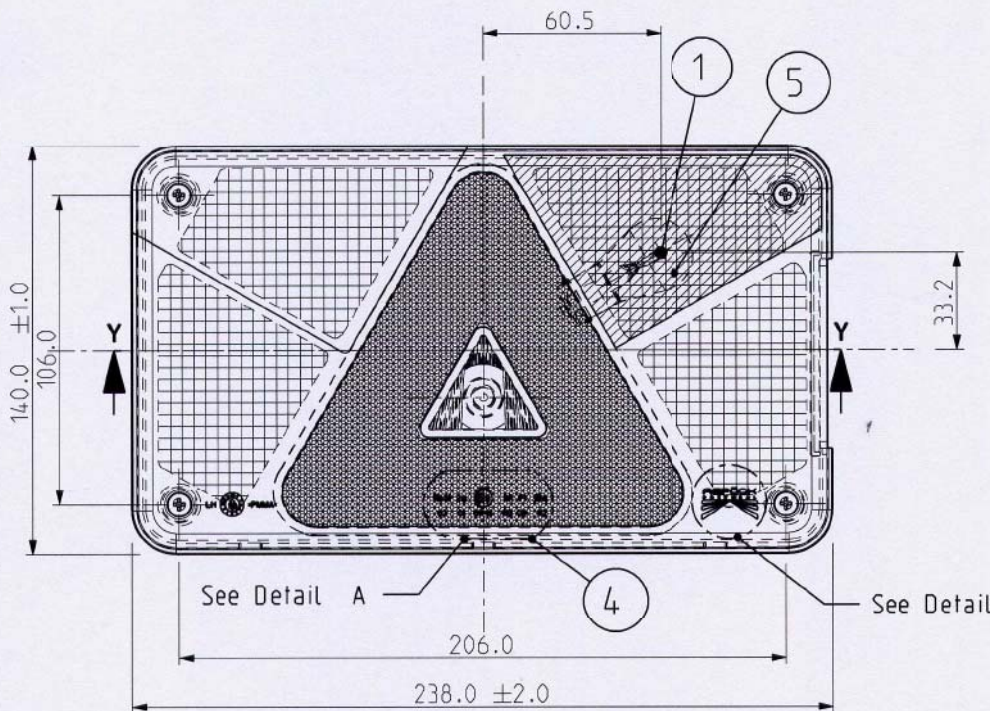
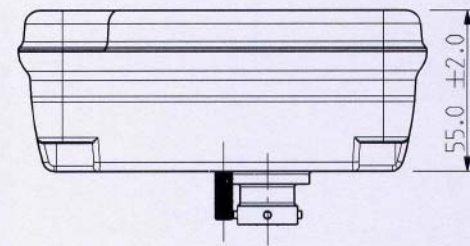


Function

**FOG**

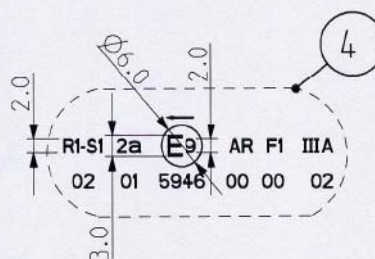


SECTION Y-Y



**Descriptive Memory**

- 1 - Center of Reference
- 2 - Axis of Reference
- 3 - Movement of Vehicle
- 4 - Homologation Mark
- 5 - Bulb P21W



Detail A  
Scale 1/1



Detail B  
Scale 1/1



**Note:**

- Dimensions mm
- Scale 5/12





**ASPOCK PORTUGAL, S.A.**

Rua do Paraíso - Zona Industrial de Rebordões  
Apartado 131 3721 - 908 Vila de Cucujães - O. de Azemeis  
Telef. +351 256 856 070 \* Fax +351 256 856 079  
E-mail: geral@aspoeck.pt

Part Name :

**Multipoint V LH**

Part Number: **DH\_80125001**

Draw by :

Date :

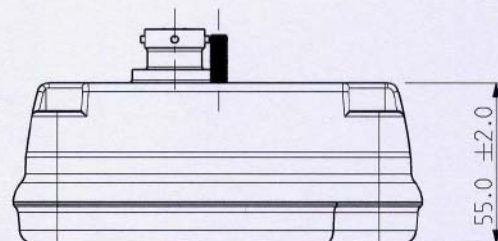
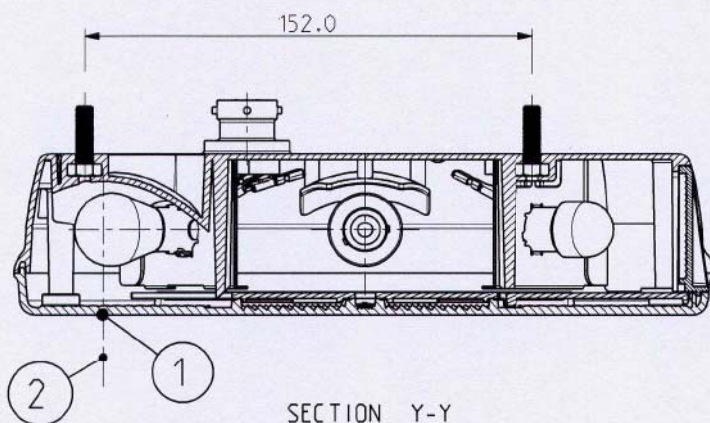
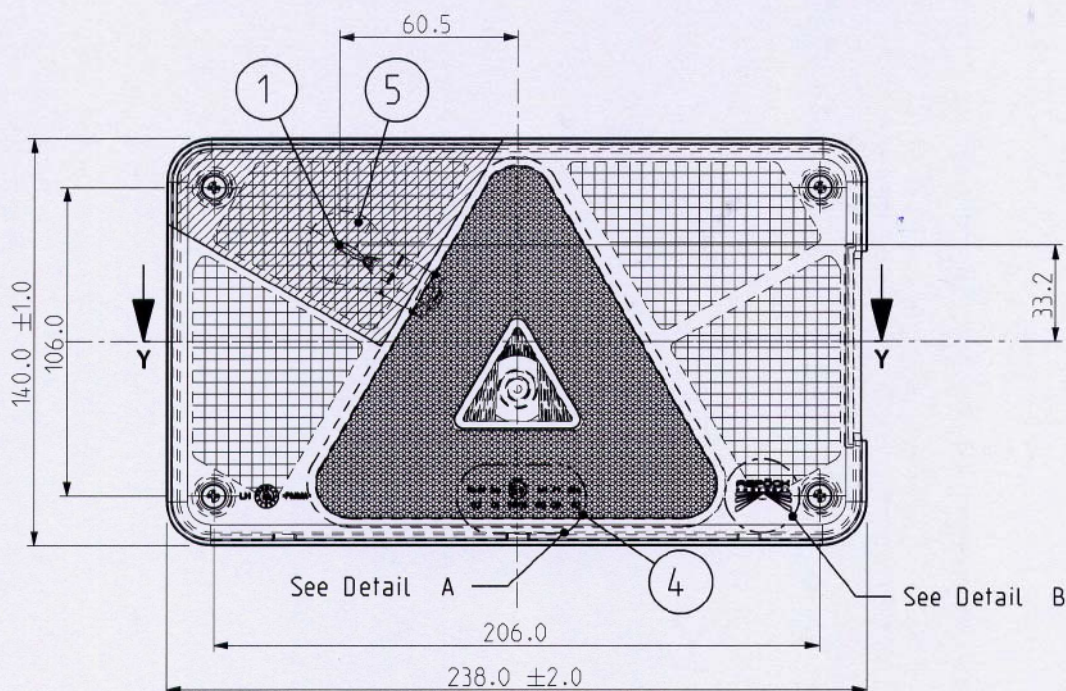
**27/04/10**

Checked by :

Sheet Nr.

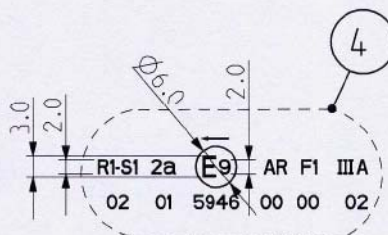
**2 de 9**

Function  
**REVERSE**

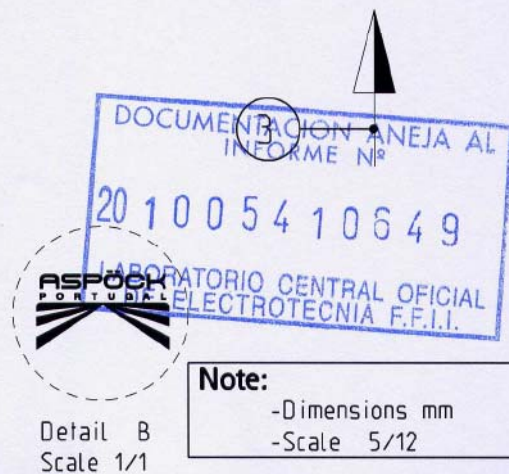


**Descriptive Memory**

- 1 - Center of Reference
- 2 - Axis of Reference
- 3 - Movement of Vehicle
- 4 - Homologation Mark
- 5 - Bulb P21W



Detail A  
Scale 1/1

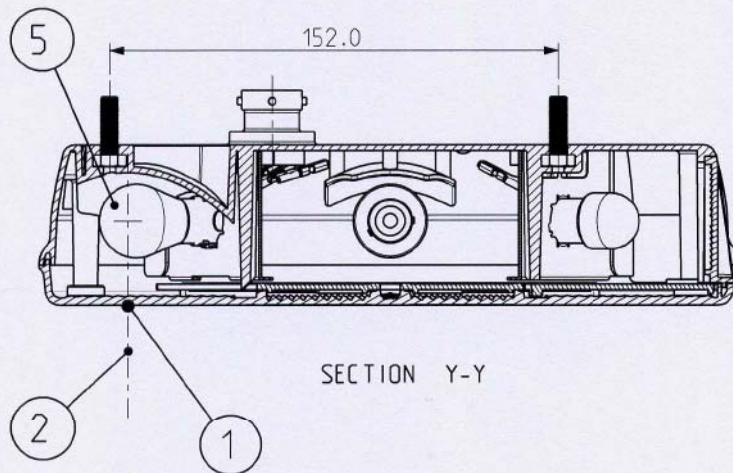
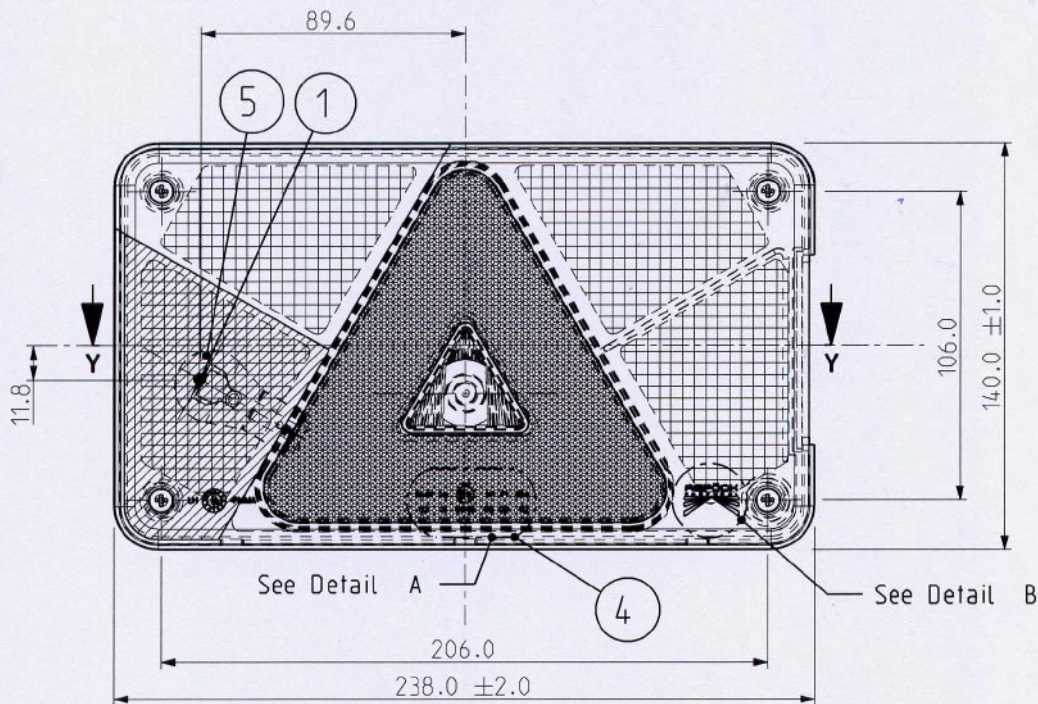


**Note:**

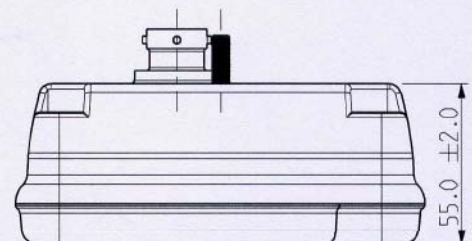
- Dimensions mm
- Scale 5/12



Function  
**STOP / TAIL**

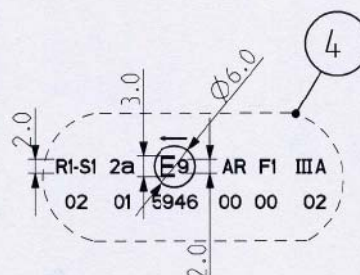


SECTION Y-Y



**Descriptive Memory**

- 1 - Center of Reference
- 2 - Axis of Reference
- 3 - Movement of Vehicle
- 4 - Homologation Mark
- 5 - Bulb P21/5W



Detail A  
Scale 1/1



Detail B  
Scale 1/1

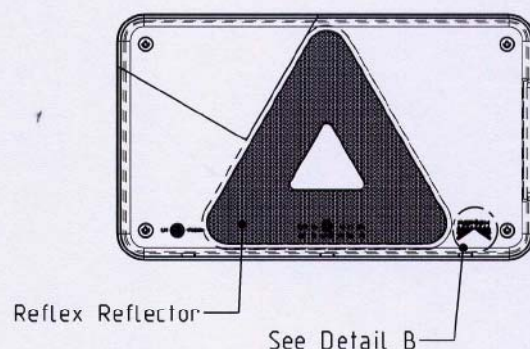
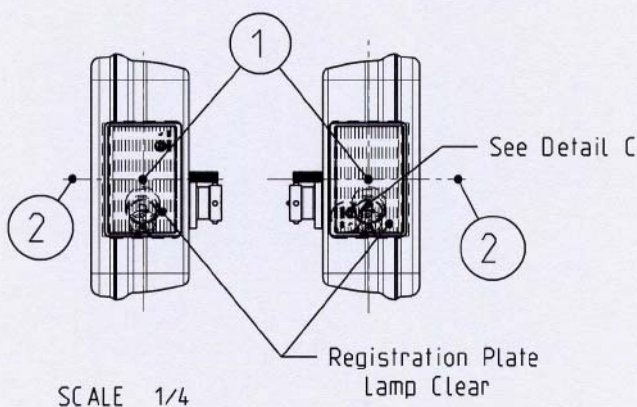
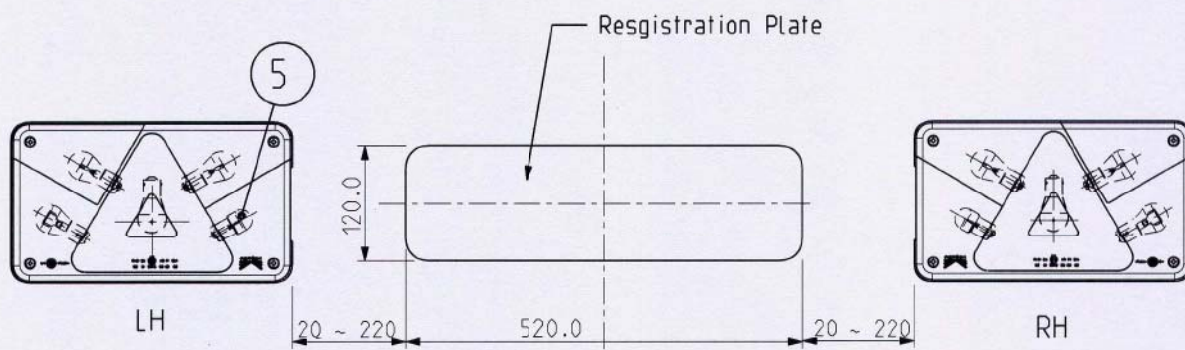
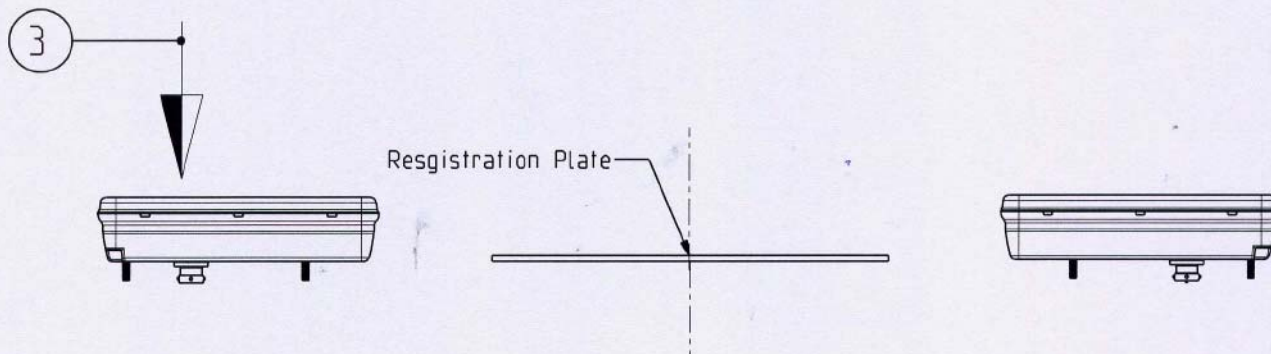


**Note:**

- Dimensions mm
- Scale 5/12

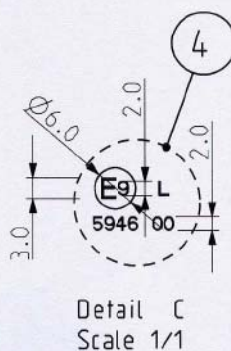


Function  
**LICENSE PLATE**



**Descriptive Memory**

- 1 - Center of Reference
- 2 - Axis of Reference
- 3 - Movement of Vehicle
- 4 - Homologation Mark
- 5 - Bulb R10W



**Note:**

- Dimensions mm
- Scale 1/6





**ASPOCK PORTUGAL, S.A.**  
Rua do Paraíso - Zona Industrial de Rebordões  
Apartado 131 3721 - 908 Vila de Cucujães - O. de Azemeis  
Telef. +351 256 856 070 \* Fax +351 256 856 079  
E-mail: geral@aspoeck.pt

Part Name :

**Multipoint V LH**

Part Number: **DH\_80125001**

Draw by :

Date :

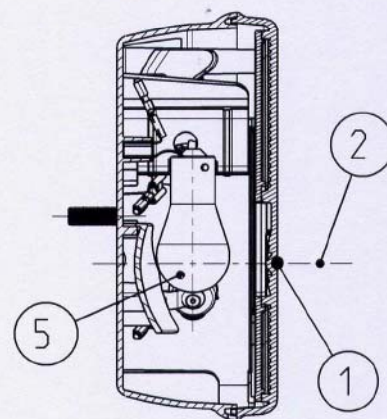
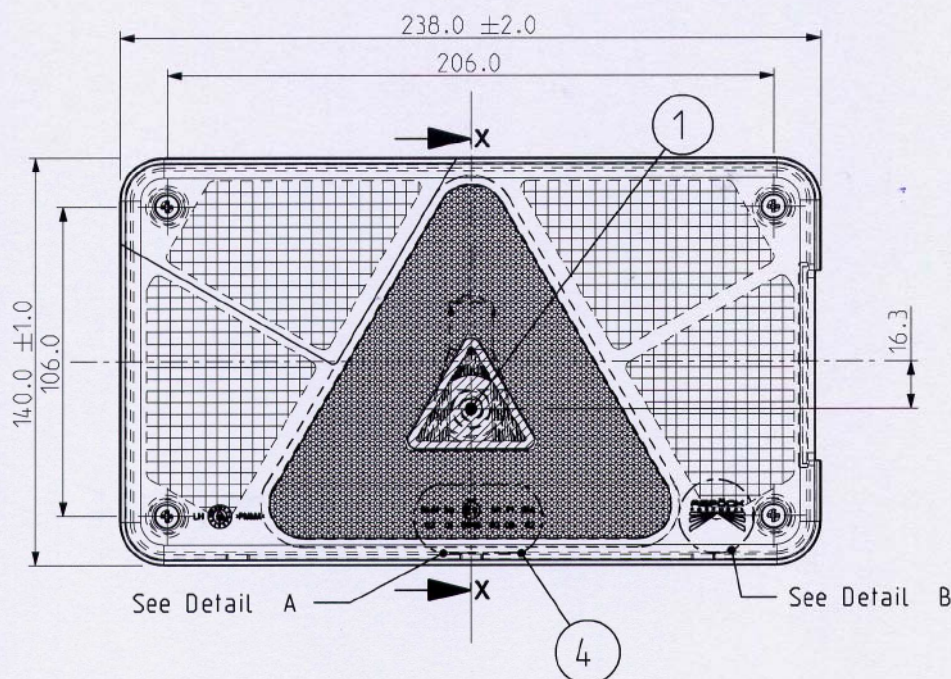
**27/04/10**

Checked by :

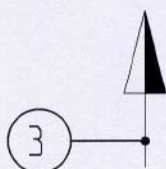
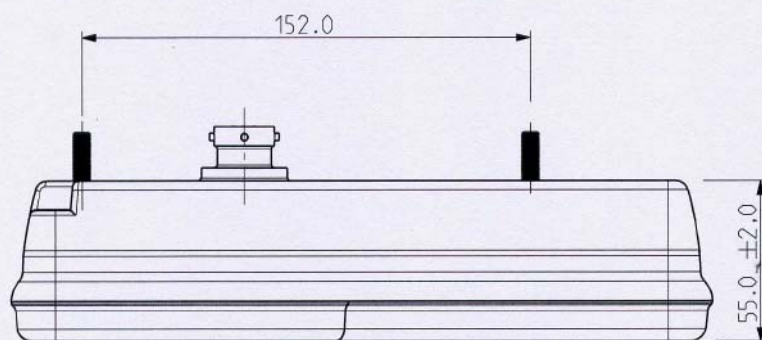
Sheet Nr.

**6 de 9**

## Function FLASHER

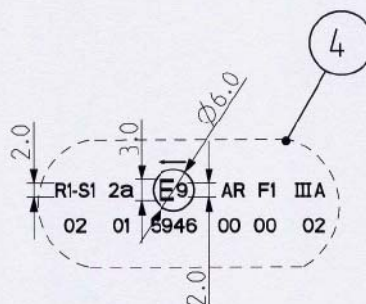


SECTION X-X



### Descriptive Memory

- 1 - Center of Reference
- 2 - Axis of Reference
- 3 - Movement of Vehicle
- 4 - Homologation Mark
- 5 - Bulb PY21W



Detail A  
Scale 1/1



Detail B  
Scale 1/1

DOCUMENTACION ANEJA AL  
INFORME N°

20 100 54 106 49

LABORATORIO CENTRAL OFICIAL  
DE ELECTROTECNIA F.F.I.I.

### Note:

- Dimensions mm
- Scale 5/12

Mod. F.156 02/09





**ASPÖCK PORTUGAL, S.A.**  
Rua do Paraíso - Zona Industrial de Rebordões  
Apartado 131 3721 - 908 Vila de Cucujães - O. de Azemeis  
Telef. +351 256 856 070 \* Fax +351 256 856 079  
E-mail: geral@aspoeck.pt

Part Name :

**Multipoint V LH**

Part Number: **DH\_80125001**

Draw by :

Date :

**27/04/10**

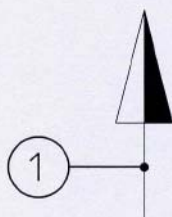
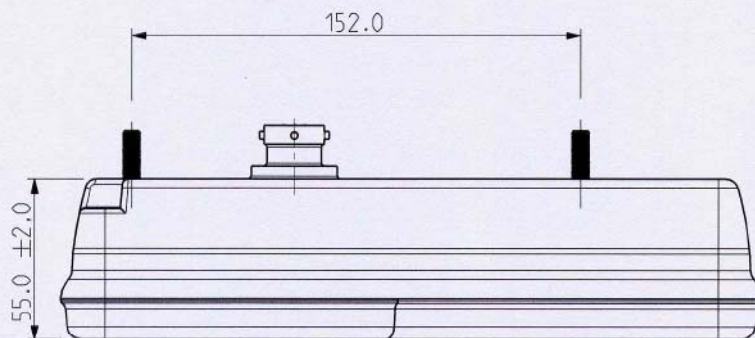
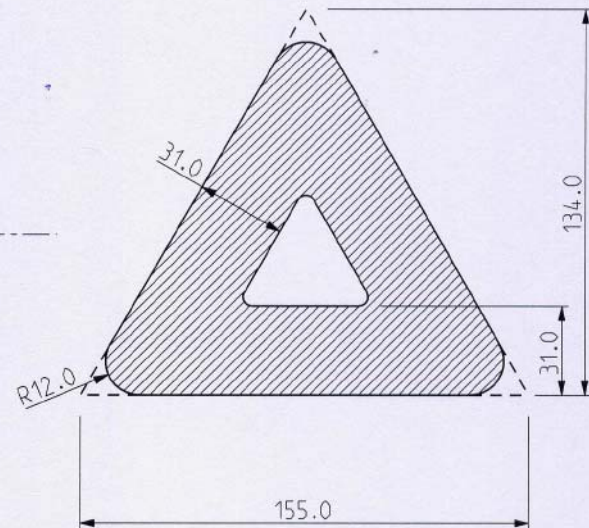
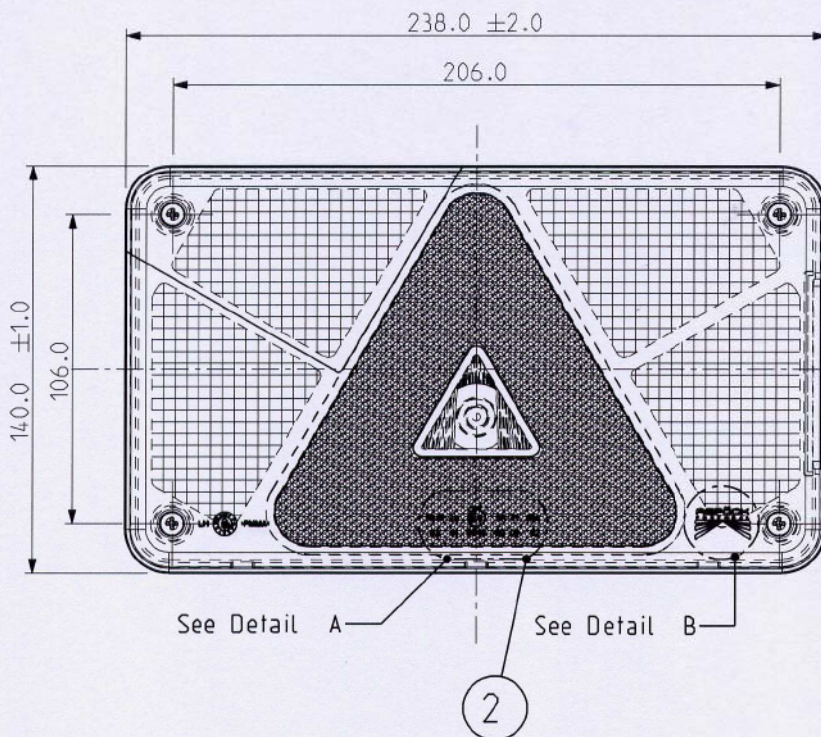
Checked by :

Sheet Nr.

**7 de 9**

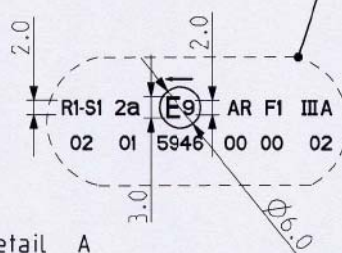
Function

## RETRO - REFLECTOR



### Descriptive Memory

- 1 - Movement of Vehicle
- 2 - Homologation Mark



Detail A  
Scale 1/1



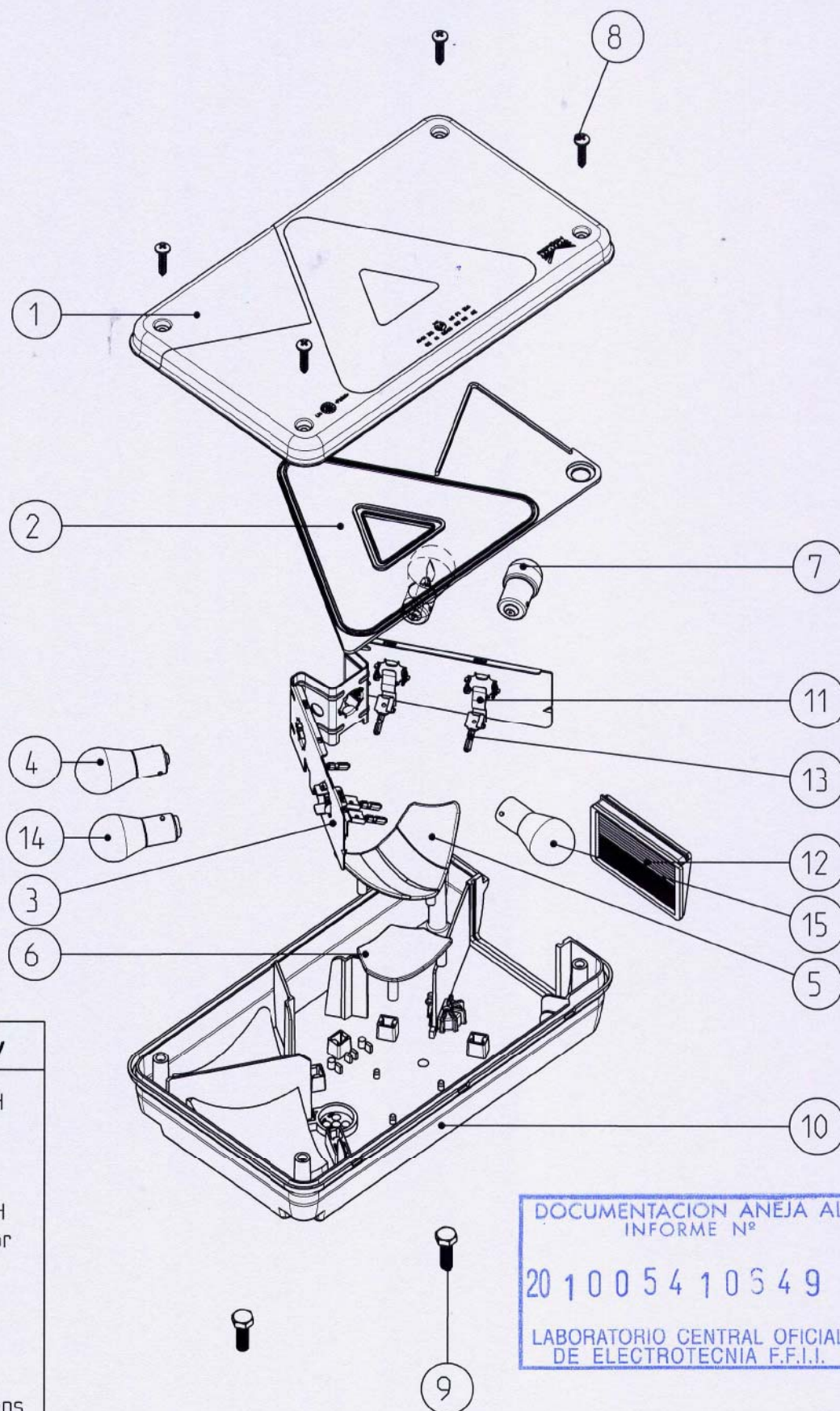
Detail B  
Scale 1/1



### Note:

- Dimensions mm
- Scale 5/12





### Descriptive Memory

- 1 - Exterior Lens LH
- 2 - Triangle Cover
- 3 - Bulb Holder LH
- 4 - Bulb P21W
- 5 - Fog Reflector LH
- 6 - Flasher Reflector
- 7 - Bulb R10W
- 8 - Screw
- 9 - Screw
- 10 - Housing LH
- 11 - Terminal
- 12 - License Plate Lens
- 13 - Terminal
- 14 - Bulb P21/5W
- 15 - Bulb Py21W

### Note:

- Dimensions mm
- Scale 1/3





**ASPÖCK PORTUGAL, S.A.**  
Rua do Paraíso - Zona Industrial de Rebordões  
Apartado 131 3721 - 908 Vila de Cucujães - O. de Azemeis  
Telef. +351 256 856 070 \* Fax +351 256 856 079  
E-mail: geral@aspoeck.pt

Part Name :

**Multipoint V RH**

Part Number: **DH\_80125002**

Draw by :

Date :

**27/04/10**

Checked by :

Sheet Nr.

**9 de 9**

## Descriptive Memory

Rear Lamp = Multipoint V

Homologation ECE nº : 5946

Manufacturer : Aspöck Portugal

Address :

Rua do Paraíso - Zona Industrial de Rebordões  
131 3721 - 208 Vila de Cucujães - O. de Azemeis

Type:

DH\_80125001/2

Base Structure :

Housing = PP

Lens = PMMA

Bulb Holder = Metal

12V / 24V

DOCUMENTACION ANEJA AL  
INFORME Nº

20 10054 10649

LABORATORIO CENTRAL OFICIAL  
DE ELECTROTECNIA F.F.I.I.