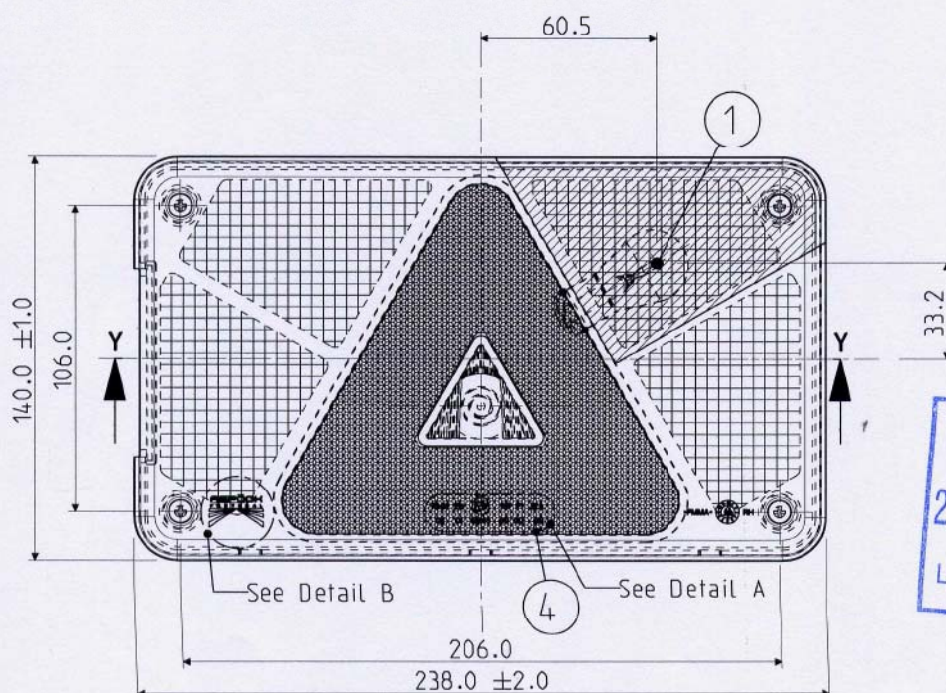
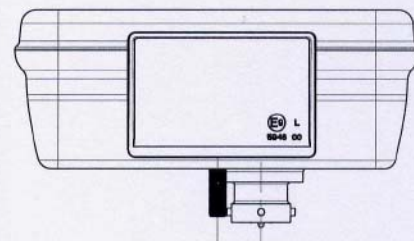
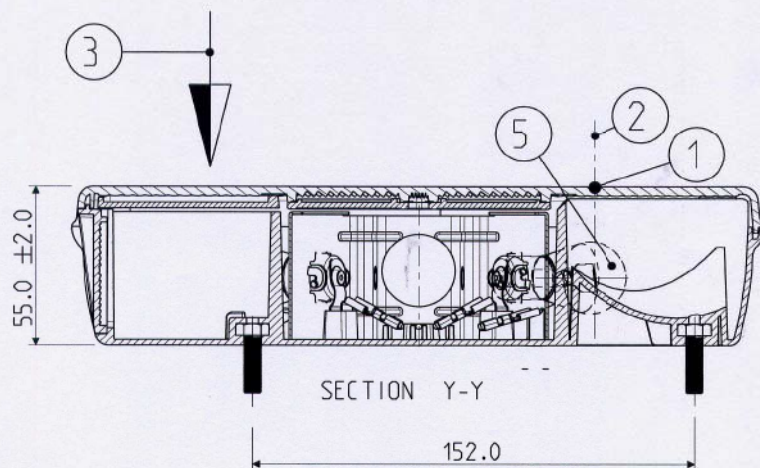




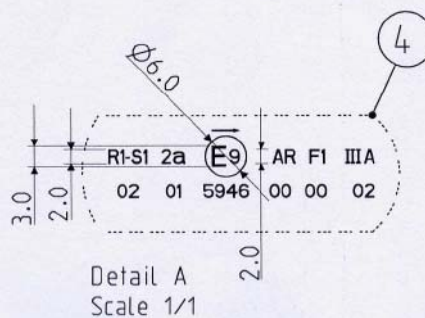


Function  
**REVERSE**



**Descriptive Memory**

- 1 - Center of Reference
- 2 - Axis of Reference
- 3 - Movement of Vehicle
- 4 - Homologation Mark
- 5 - Bulb P21W

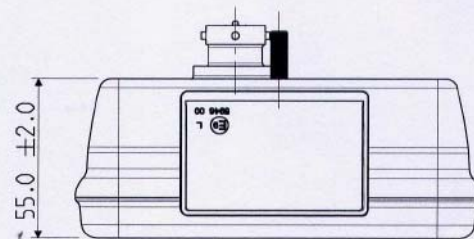
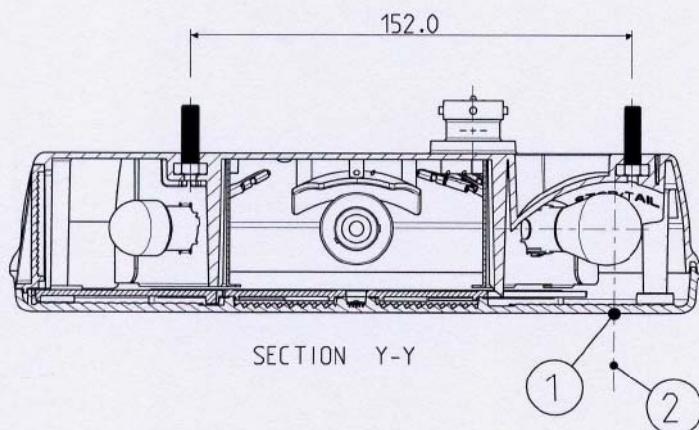
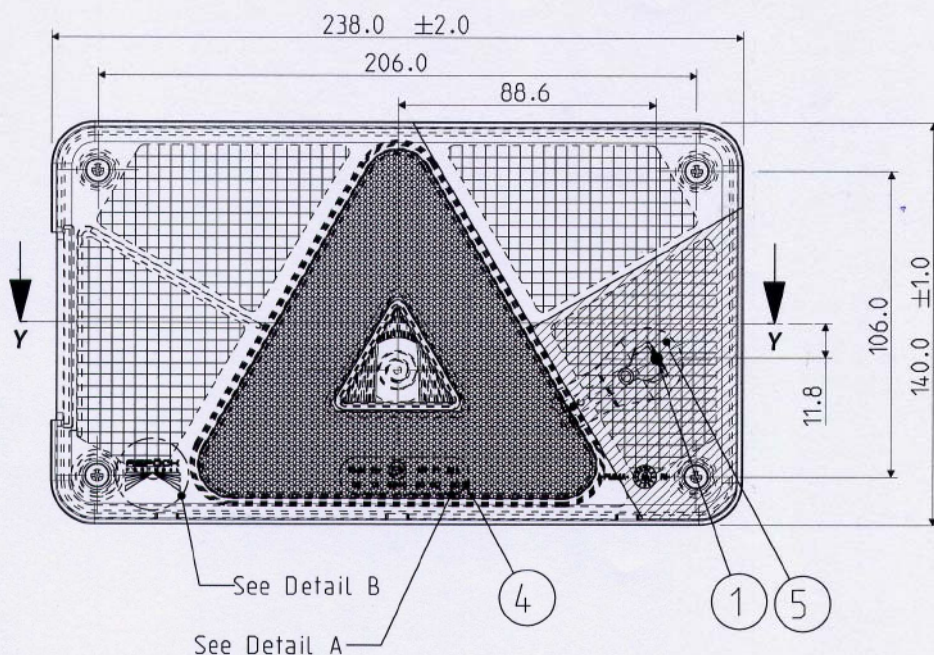


**Note:**

- Dimensions mm
- Scale 5/12

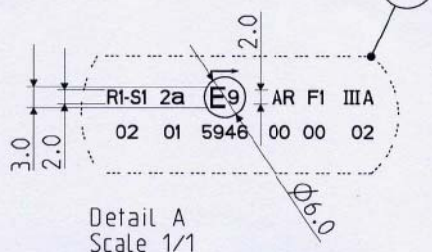


Function  
**STOP / TAIL**



**Descriptive Memory**

- 1 - Center of Reference
- 2 - Axis of Reference
- 3 - Movement of Vehicle
- 4 - Homologation Mark
- 5 - Bulb P21/5W

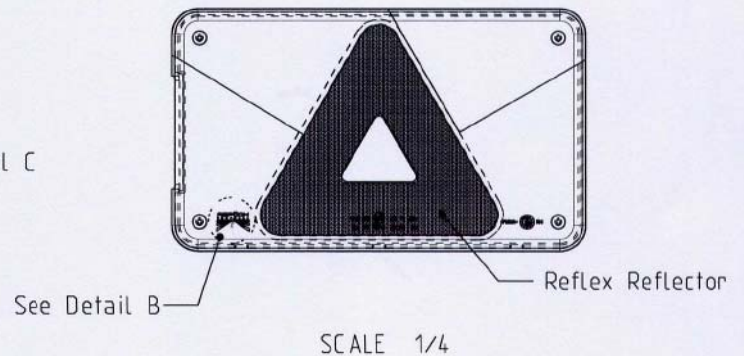
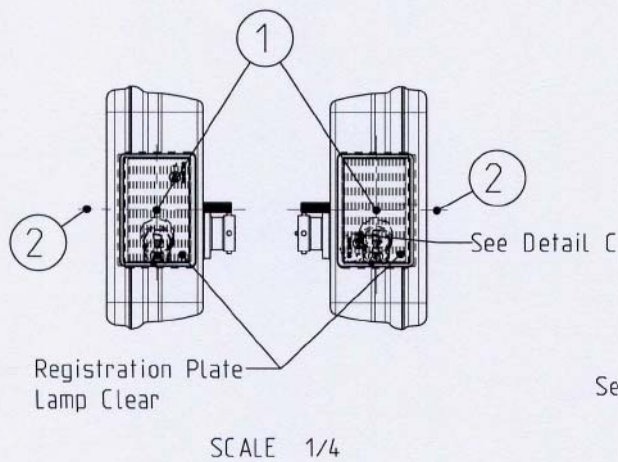
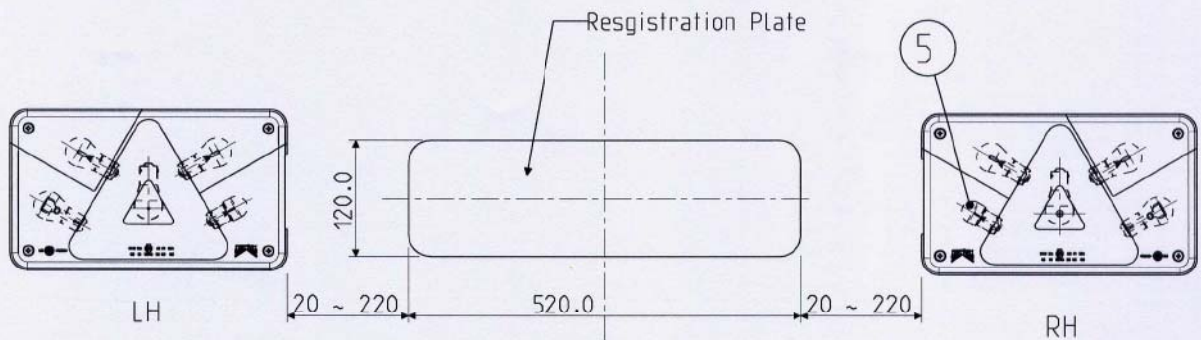
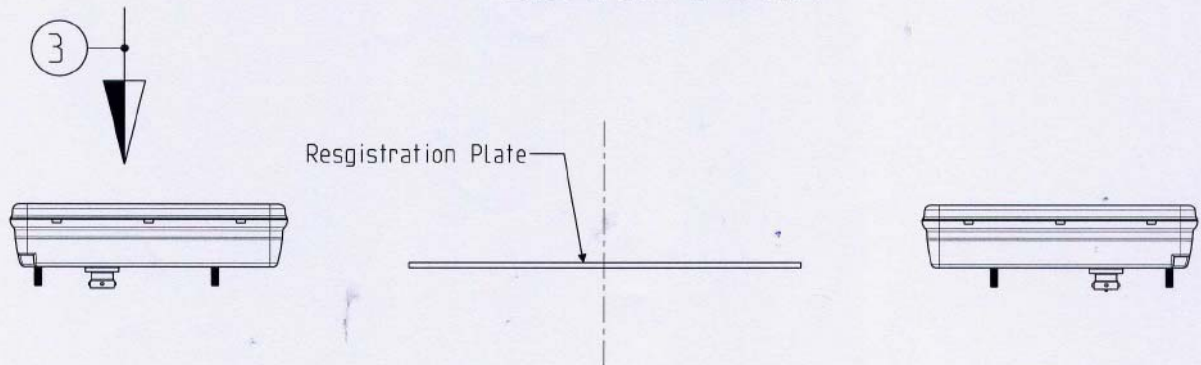


**Note:**

- Dimensions mm
- Scale 5/12

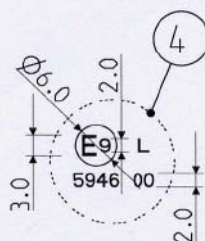


# Function LICENSE PLATE

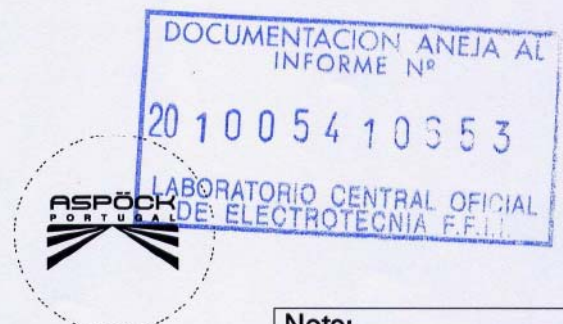


## Descriptive Memory

- 1 - Center of Reference
- 2 - Axis of Reference
- 3 - Movement of Vehicle
- 4 - Homologation Mark
- 5 - Bulb R10W



Detail C  
Scale 1/1



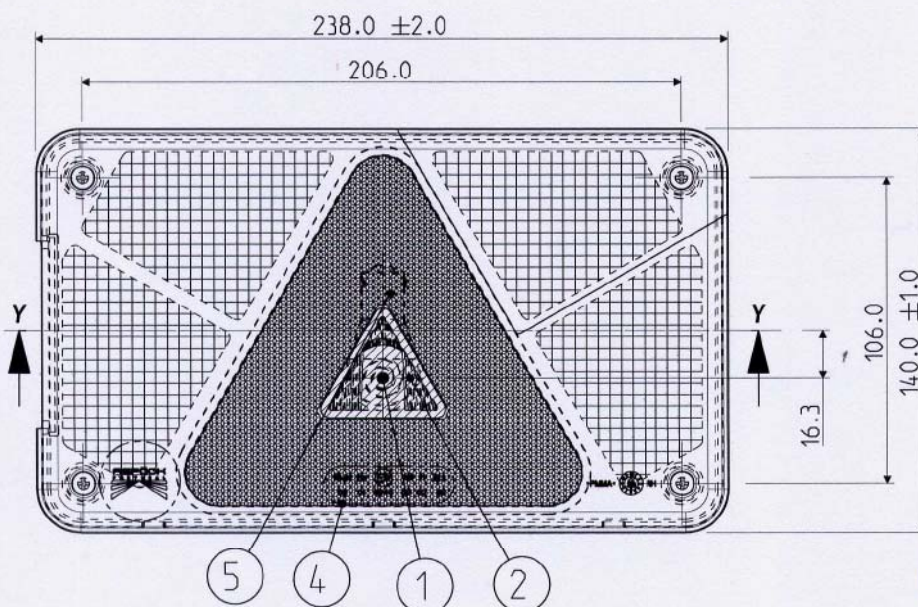
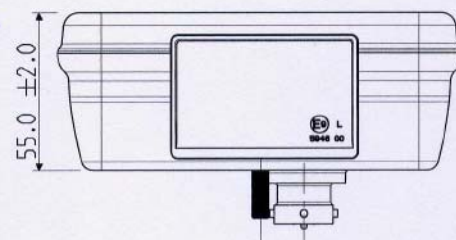
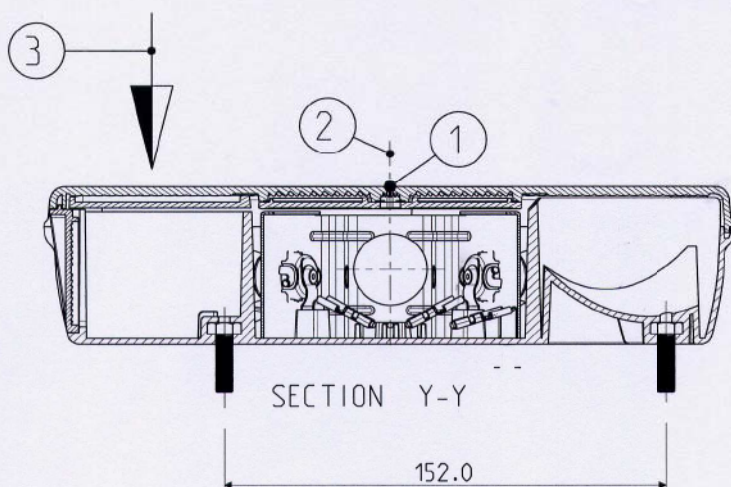
Detail B  
Scale 1/1

## Note:

- Dimensions mm
- Scale 1/6

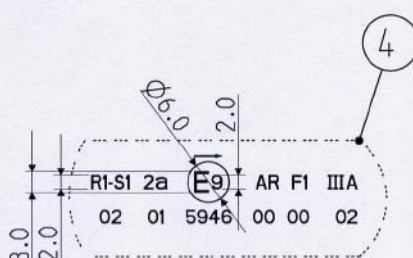


# Function FLASHER



## Descriptive Memory

- 1 - Center of Reference
- 2 - Axis of Reference
- 3 - Movement of Vehicle
- 4 - Homologation Mark
- 5 - Bulb PY21W



Detail A  
Scale 1/1



Detail B  
Scale 1/1

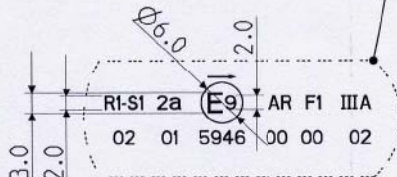
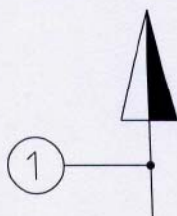
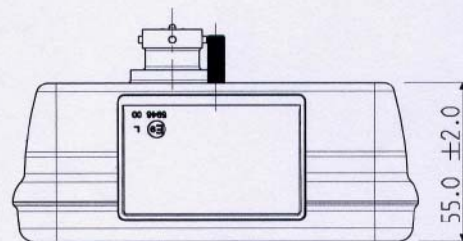
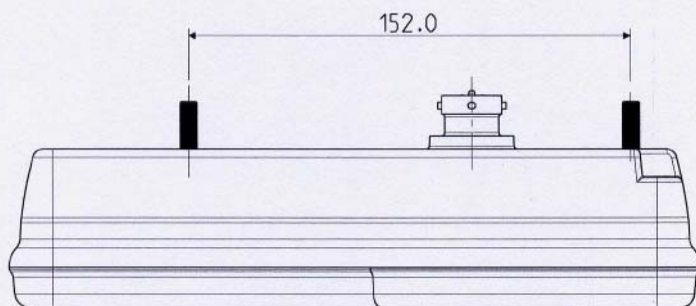
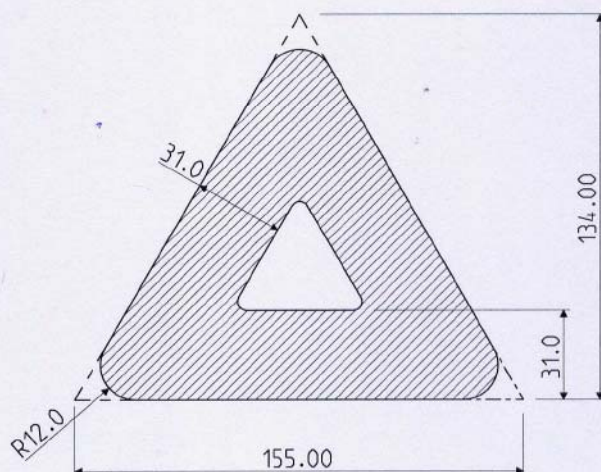
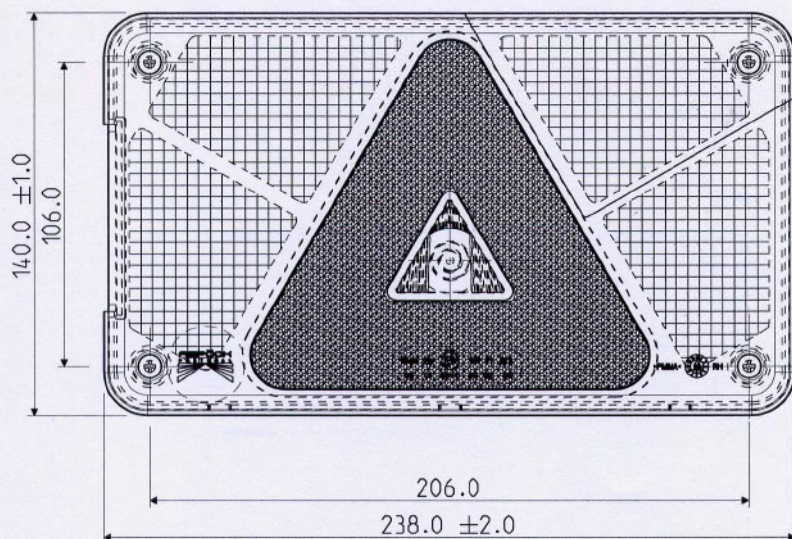


## Note:

- Dimensions mm
- Scale 5/12



Function  
**RETRO - REFLECTOR**



Detail A  
Scale 1/1



Detail B  
Scale 1/1

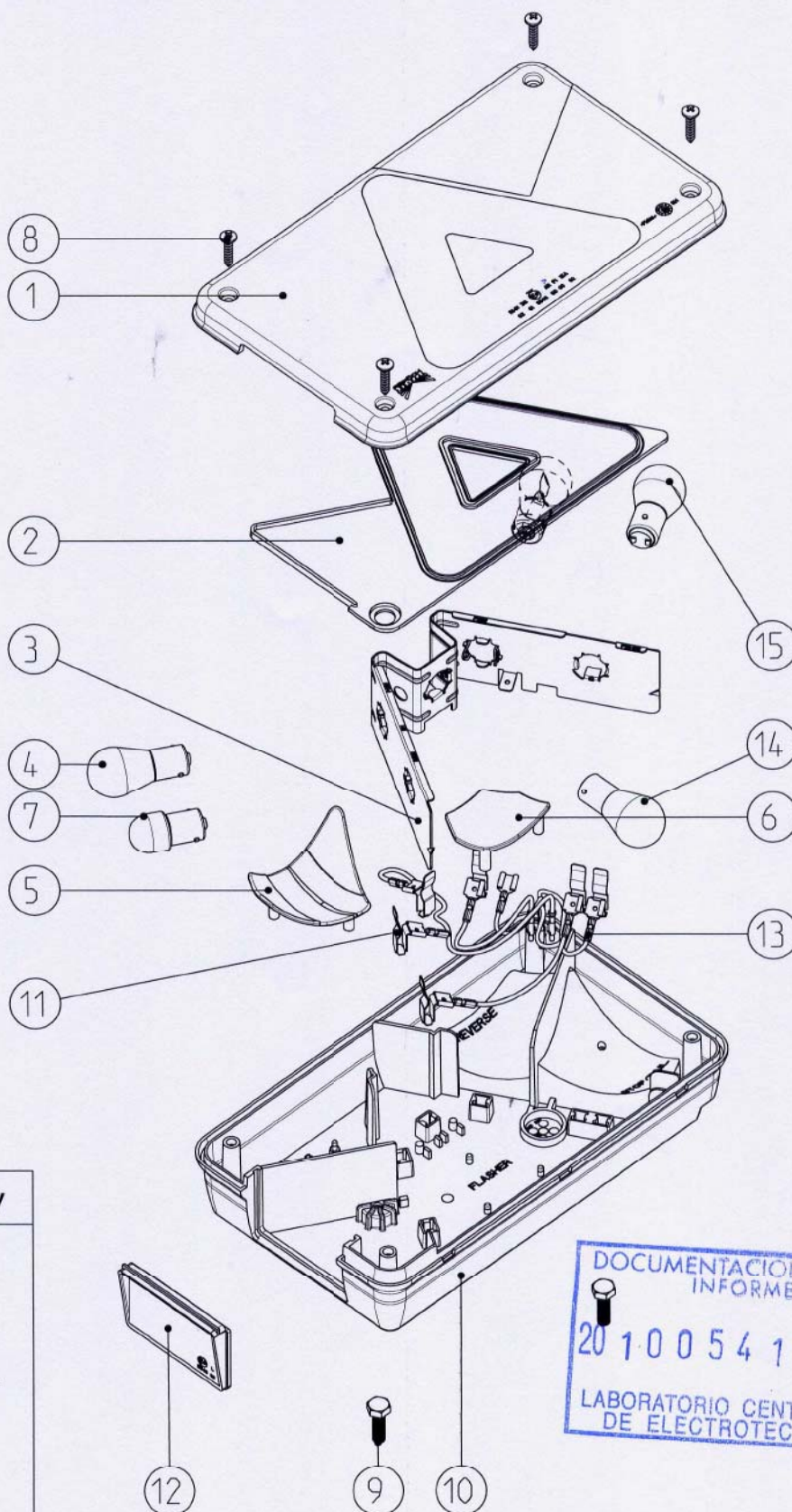
**Descriptive Memory**

- 1 - Movement of Vehicle
- 2 - Homologation Mark

**Note:**

- Dimensions mm
- Scale 5/12





### Descriptive Memory

- 1 - Exterior Lens RH
- 2 - Triangle Cover
- 3 - Bulb Holder RH
- 4 - Bulb P21W
- 5 - Fog Reflector RH
- 6 - Flasher Reflector
- 7 - Bulb R10W
- 8 - Screw
- 9 - Screw
- 10 - Housing RH
- 11 - Terminal
- 12 - License Plate Lens
- 13 - Terminal
- 14 - Bulb Py21W
- 15 - Bulb P21/5W

DOCUMENTACION ANEJA AL  
 INFORME Nº  
**201005410653**  
 LABORATORIO CENTRAL OFICIAL  
 DE ELECTROTECNIA F.F.I.I.

### Note:

- Dimensions mm
- Scale 1/3





**ASPÖCK PORTUGAL, S.A.**  
Rua do Paraíso - Zona Industrial de Rebordões  
Apartado 131 3721 - 908 Vila de Cucujães - O. de Azemeis  
Telef. +351 256 856 070 \* Fax +351 256 856 079  
E-mail: geral@aspoeck.pt

Part Name :

**Multipoint V RH**

Draw by :

Date :

**27/04/10**

Checked by :

Sheet Nr.

Part Number: **DH\_80125002**

**9 de 9**

## Descriptive Memory

Rear Lamp = Multipoint V

Homologation ECE nº : 5946

Manufacturer : Aspöck Portugal

Address :

Rua do Paraíso - Zona Industrial de Rebordões

131 3721 - 208 Vila de Cucujães - O. de Azemeis

Type:

**DH\_80125001/2**

Base Structure :

Housing = PP

Lens = PMMA

Bulb Holder = Metal

**12V / 24V**

