



**ASPOCK PORTUGAL S.A.**  
Rua do Paraíso - Zona Industrial de Rebordões  
Apartado 131 3721 - 908 Vila de Cucujães - O. de Azemeis  
Telef. +351 256 856 070 \* Fax +351 256 856 079  
E-mail: geral@aspoeck.pt

Part Name :

**Multipoint V RH**

Part Number: **DH\_80125002**

Draw by :

Date :

**27/04/10**

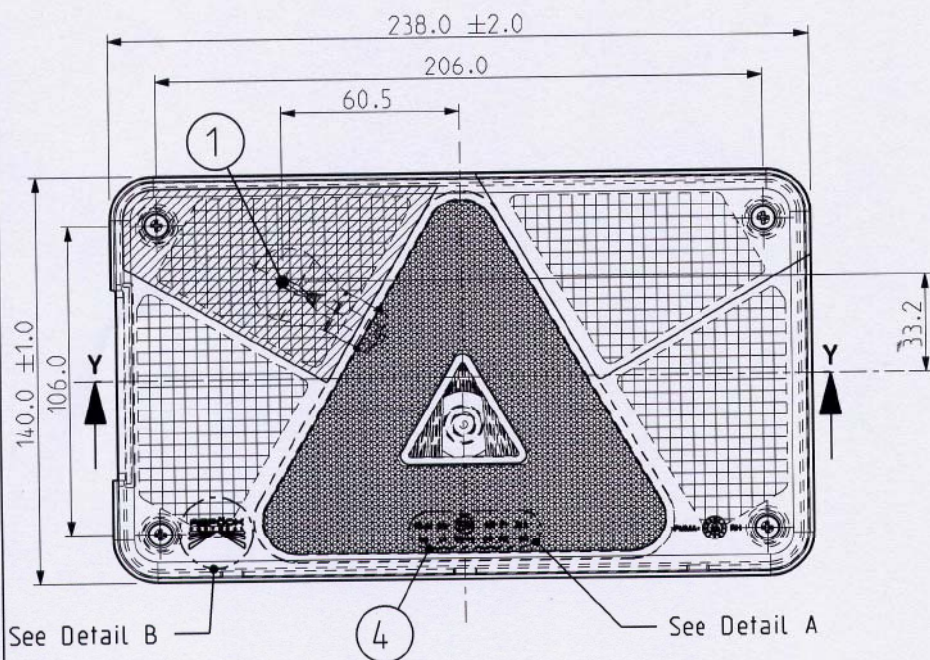
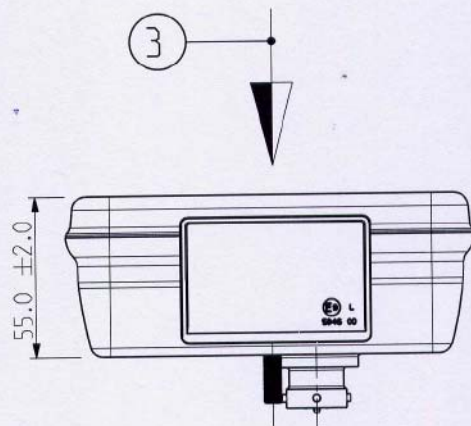
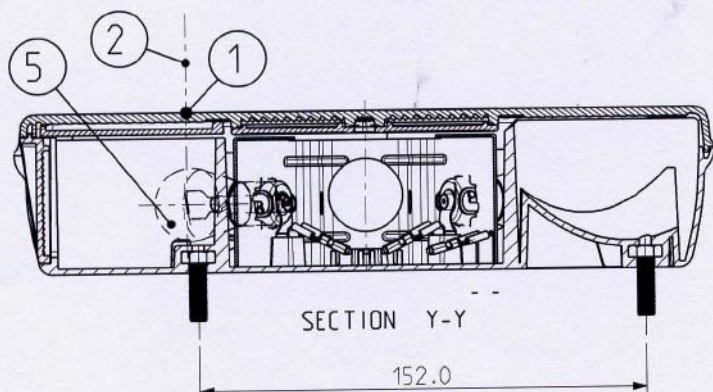
Checked by :

Sheet Nr.

**1 de 9**

Function

**FOG**

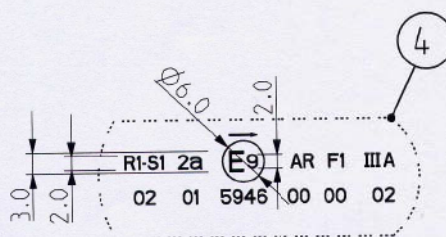


See Detail B

See Detail A

**Descriptive Memory**

- 1 - Center of Reference
- 2 - Axis of Reference
- 3 - Movement of Vehicle
- 4 - Homologation Mark
- 5 - Bulb P21W



Detail A  
Scale 1/1



Detail B  
Scale 1/1

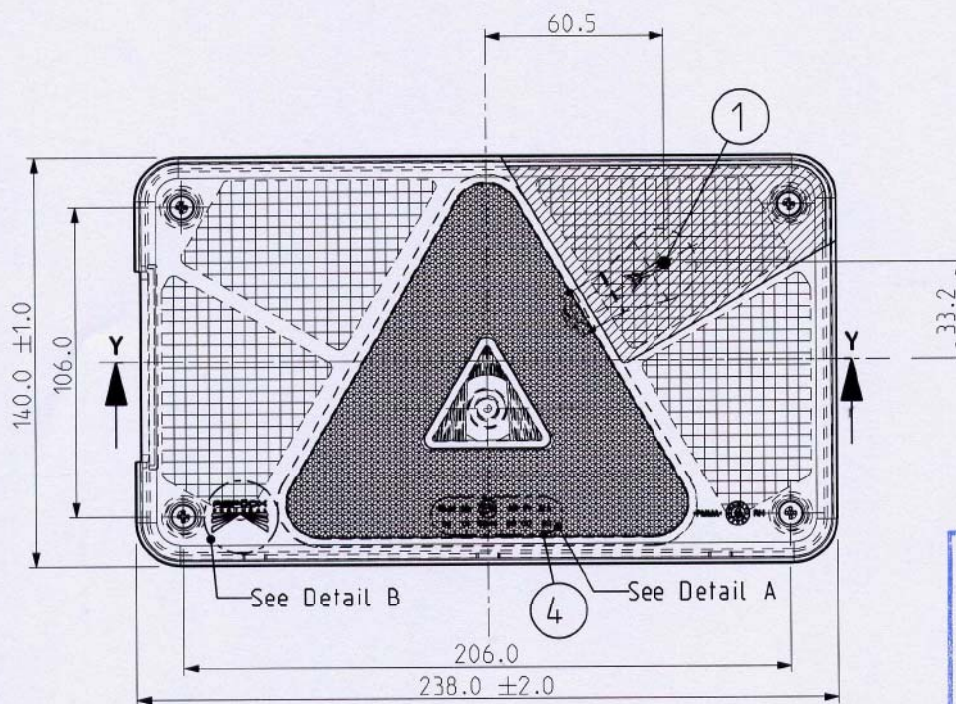
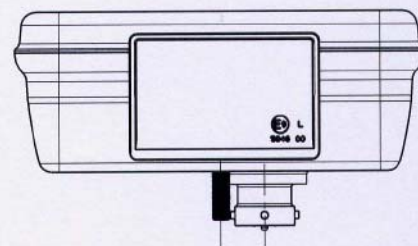
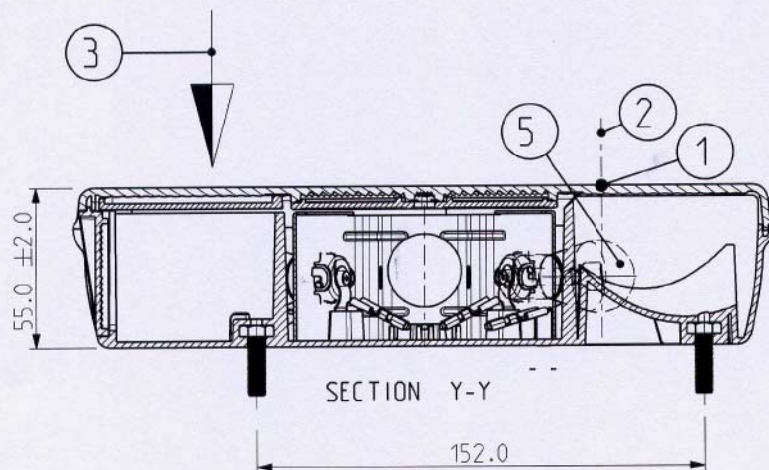
**Note:**

- Dimensions mm
- Scale 5/12





# Function REVERSE



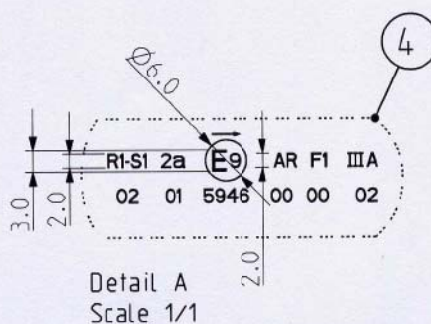
DOCUMENTACION ANEJA AL  
INFORME Nº

20 100 54 106 52

LABORATORIO CENTRAL OFICIAL  
DE ELECTROTECNIA F.F.I.I.

## Descriptive Memory

- 1 - Center of Reference
- 2 - Axis of Reference
- 3 - Movement of Vehicle
- 4 - Homologation Mark
- 5 - Bulb P21W



## Note:

- Dimensions mm
- Scale 5/12





**ASPÖCK PORTUGAL, S.A.**  
Rua do Paraíso - Zona Industrial de Rebordões  
Apartado 131 3721 - 908 Vila de Cucujães - O. de Azemeis  
Telef. +351 256 856 070 \* Fax +351 256 856 079  
E-mail: geral@aspoeck.pt

Part Name :

**Multipoint V RH**

Part Number: **DH\_80125002**

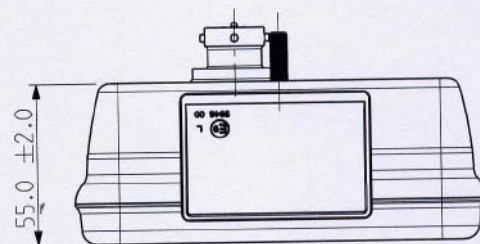
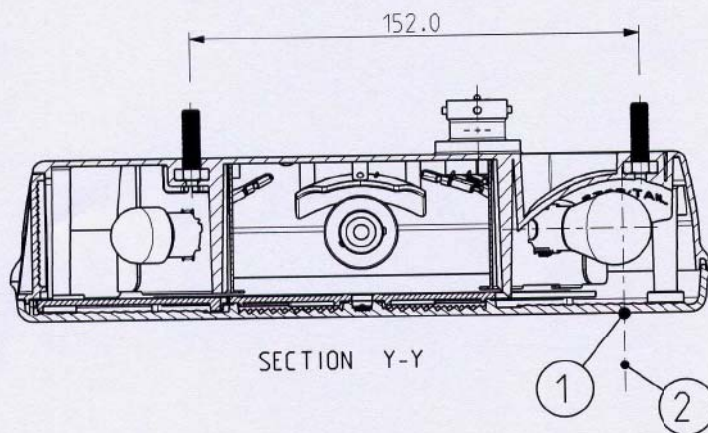
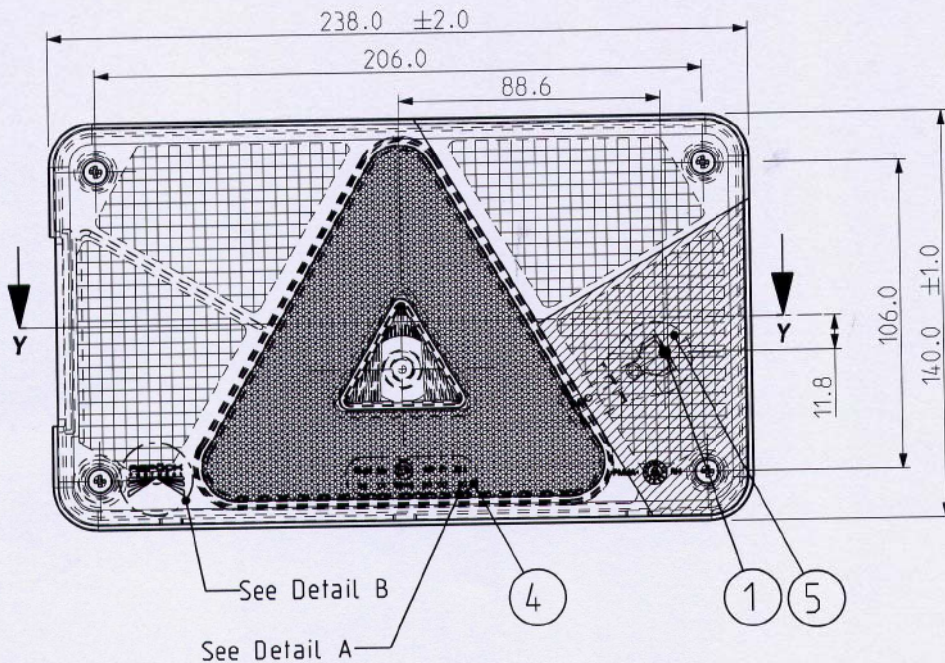
Draw by :

Date :  
**27/04/10**

Checked by :

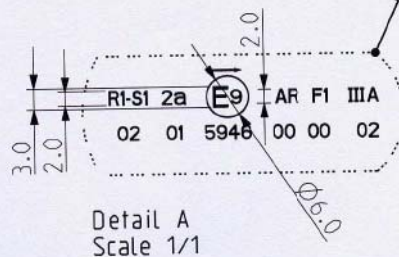
Sheet Nr.  
**3 de 9**

Function  
**STOP / TAIL**



**Descriptive Memory**

- 1 - Center of Reference
- 2 - Axis of Reference
- 3 - Movement of Vehicle
- 4 - Homologation Mark
- 5 - Bulb P21/5W



Detail B  
Scale 1/1



**Note:**

- Dimensions mm
- Scale 5/12

Mod. F.156 02/09





**ASPOCK PORTUGAL, S.A.**  
Rua do Paraíso - Zona Industrial de Rebordões  
Apartado 131 3721 - 908 Vila de Cucujães - O. de Azemeis  
Telef. +351 256 856 070 \* Fax +351 256 856 079  
E-mail: geral@aspoeck.pt

Part Name :

**Multipoint V RH**

Part Number: **DH\_80125002**

Draw by :

Date :

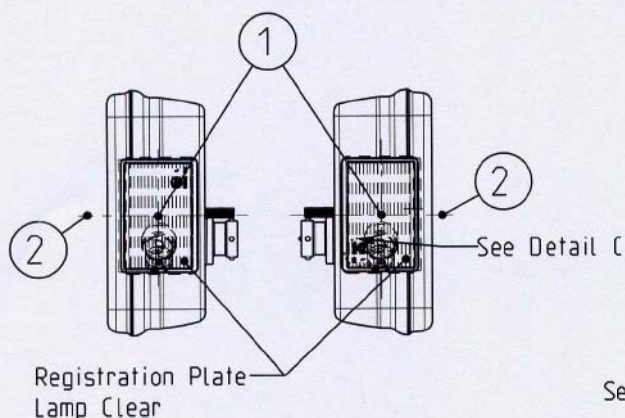
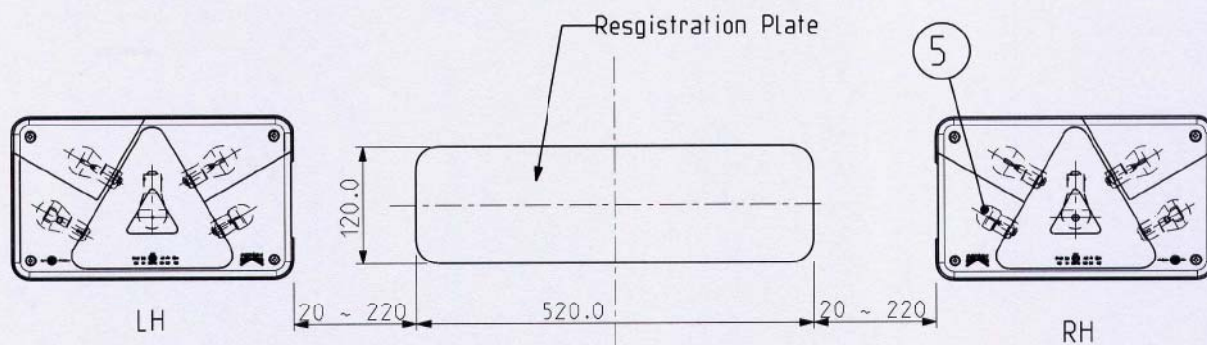
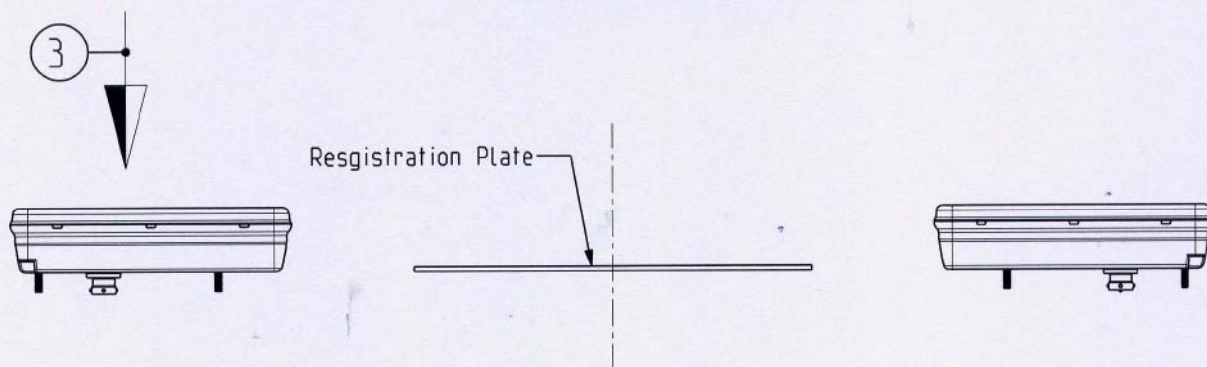
**27/04/10**

Checked by :

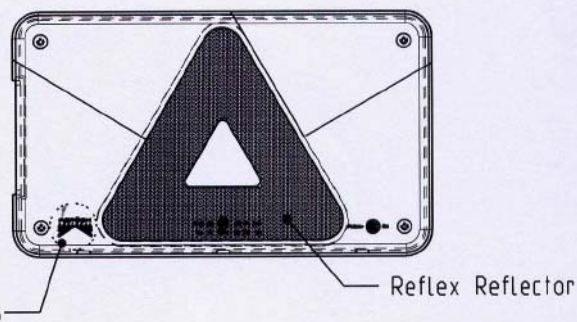
Sheet Nr.

**4 de 9**

## Function LICENSE PLATE



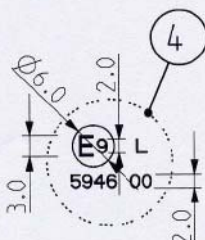
SCALE 1/4



SCALE 1/4

### Descriptive Memory

- 1 - Center of Reference
- 2 - Axis of Reference
- 3 - Movement of Vehicle
- 4 - Homologation Mark
- 5 - Bulb R10W



Detail C  
Scale 1/1



Detail B  
Scale 1/1

DOCUMENTACION ANEJA AL  
INFORME Nº  
**20 100 54 106 52**  
LABORATORIO CENTRAL OFICIAL  
DE ELECTROTECNIA F.F.I.I.

### Note:

- Dimensions mm
- Scale 1/6

Mod. F.156 02/09.





**ASPÖCK PORTUGAL, S.A.**  
Rua do Paraíso - Zona Industrial de Rebordões  
Apartado 131 3721 - 908 Vila de Cucujães - O. de Azemeis  
Telef. +351 256 856 070 \* Fax +351 256 856 079  
E-mail: geral@aspoeck.pt

Part Name :

**Multipoint V RH**

Part Number: **DH\_80125002**

Draw by :

Date :

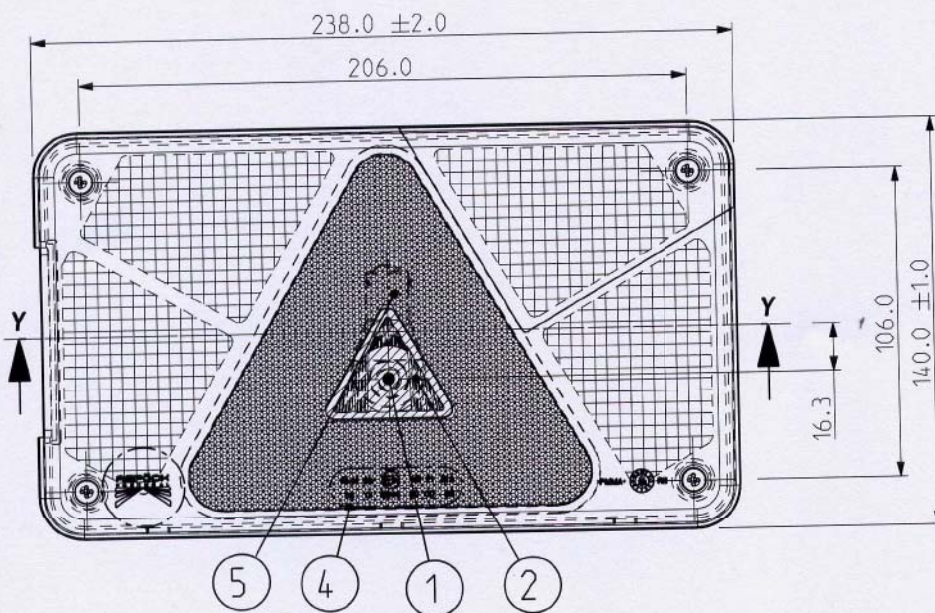
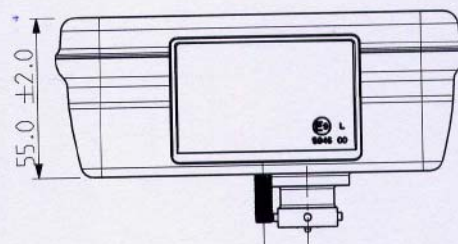
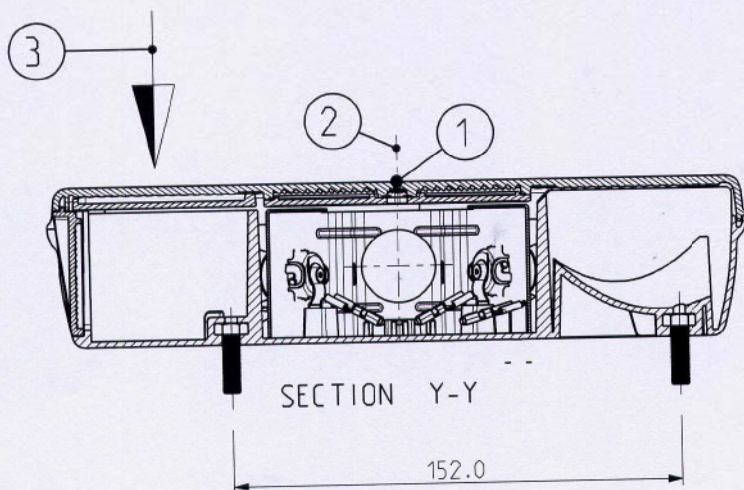
**27/04/10**

Checked by :

Sheet Nr.

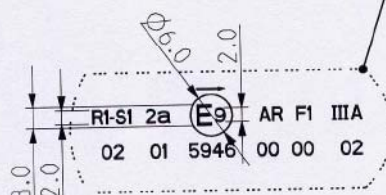
**6 de 9**

## Function FLASHER



### Descriptive Memory

- 1 - Center of Reference
- 2 - Axis of Reference
- 3 - Movement of Vehicle
- 4 - Homologation Mark
- 5 - Bulb PY21W



Detail A  
Scale 1/1



Detail B  
Scale 1/1

DOCUMENTACION ANEJA AL  
INFORME N°

**20 100 54 106 52**

LABORATORIO CENTRAL OFICIAL  
DE ELECTROTECNIA F.F.I.I.

### Note:

- Dimensions mm
- Scale 5/12

Mod. F.156 02/09





**ASPOCK PORTUGAL, S.A.**  
Rua do Paraíso - Zona Industrial de Rebordões  
Apartado 131 3721 - 908 Vila de Cucujães - O. de Azemeis  
Telef. +351 256 856 070 \* Fax +351 256 856 079  
E-mail: geral@aspoeck.pt

Part Name :

**Multipoint V RH**

Part Number: **DH\_80125002**

Draw by :

Date :

**27/04/10**

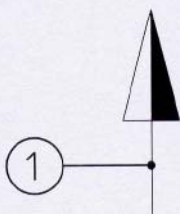
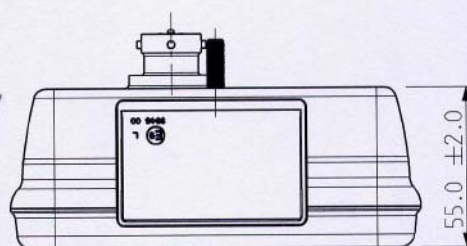
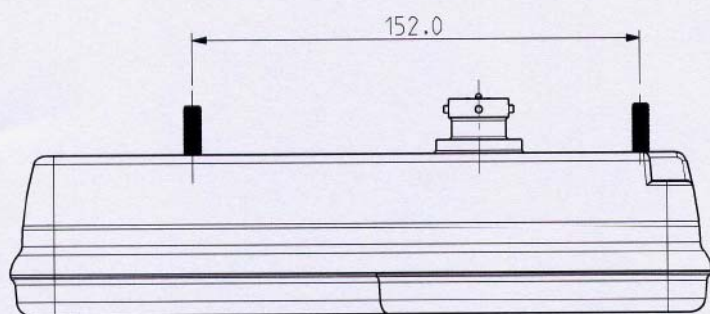
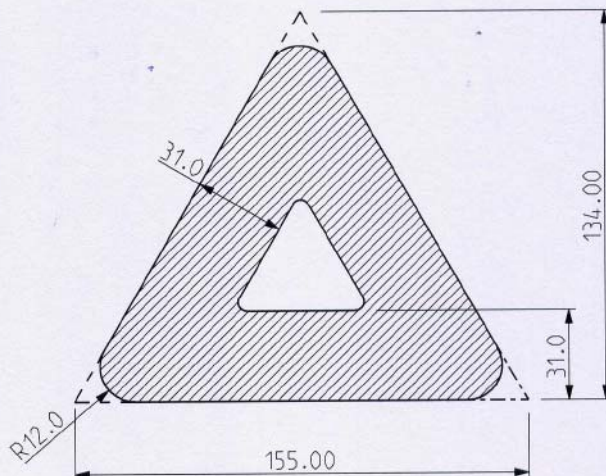
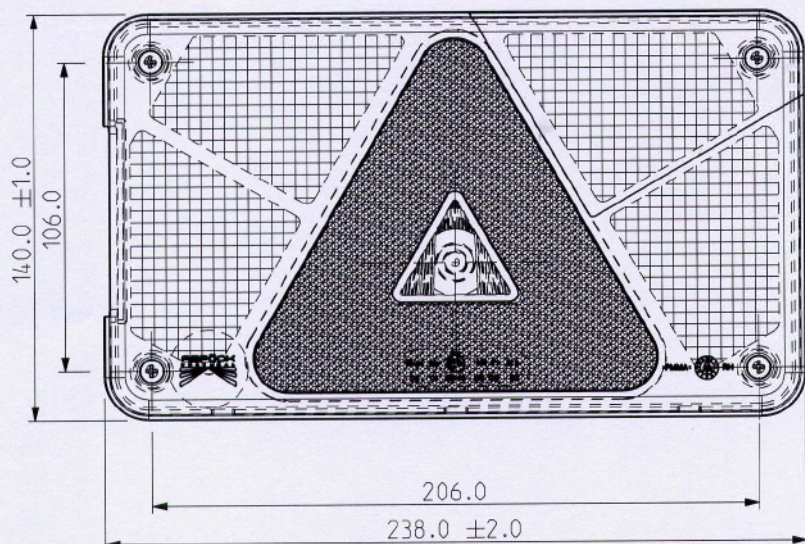
Checked by :

Sheet Nr.

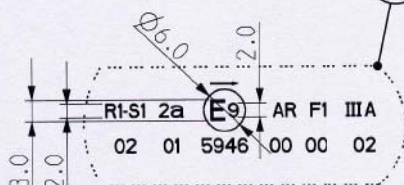
**7 de 9**

Function

## RETRO - REFLECTOR



2



### Descriptive Memory

- 1 - Movement of Vehicle
- 2 - Homologation Mark

Detail A  
Scale 1/1

Detail B  
Scale 1/1

DOCUMENTACION ANEJA AL  
INFORME N°

20 100 54 106 52

LABORATORIO CENTRAL OFICIAL  
DE ELECTROTECNIA F.F.I.I.

### Note:

- Dimensions mm
- Scale 5/12

Mod. F.156 02/09





**ASPOCK PORTUGAL, S.A.**  
Rua do Paraíso - Zona Industrial de Rebordões  
Apartado 131 3721 - 908 Vila de Cucujães - O. de Azeméis  
Telef. +351 256 856 070 \* Fax +351 256 856 079  
E-mail: geral@aspoeck.pt

Part Name :

**Multipoint V RH**

Part Number: **DH\_80125002**

Draw by :

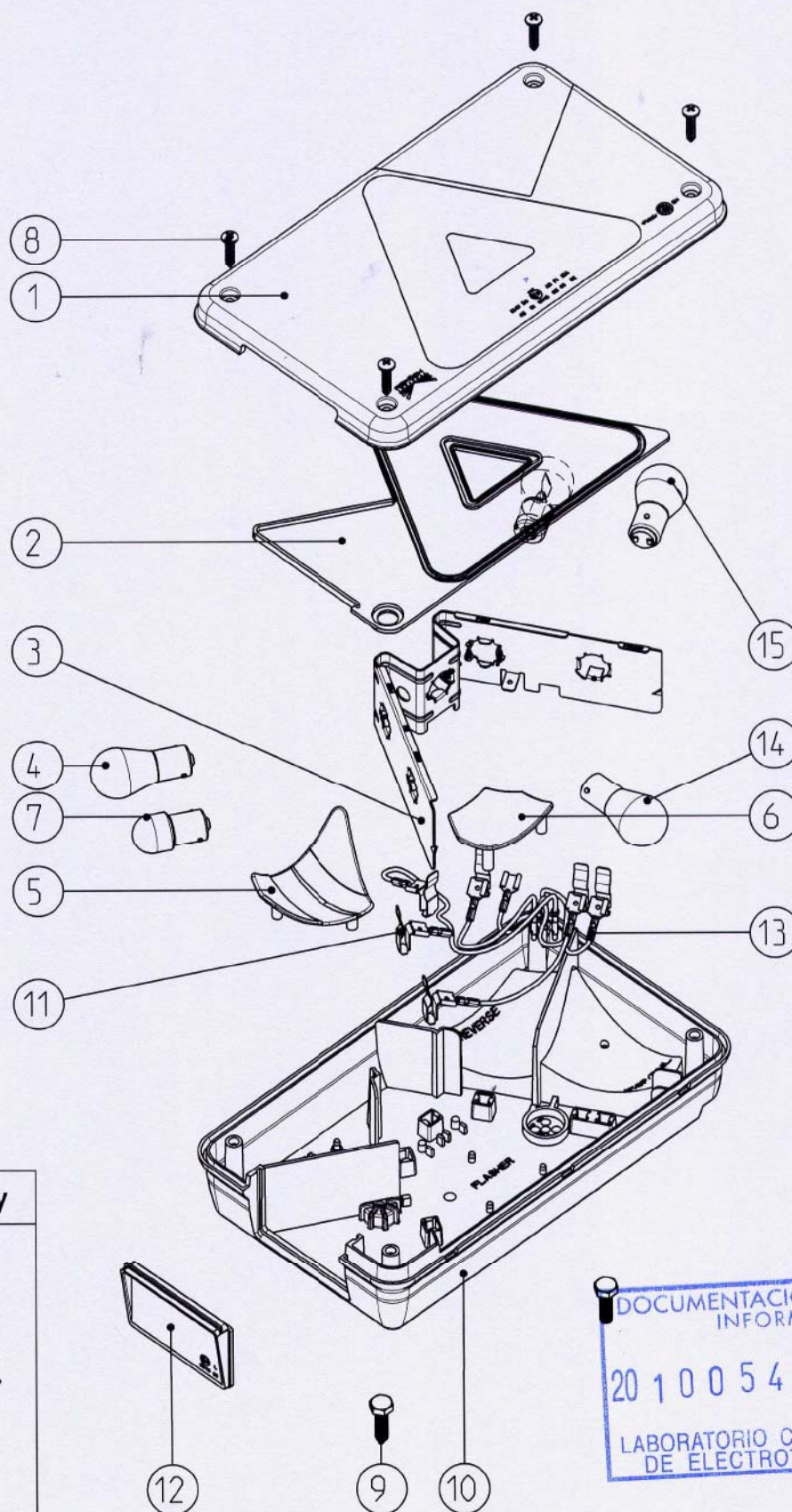
Date :

**27/04/10**

Checked by :

Sheet Nr.

**8 de 9**



### Descriptive Memory

- 1 - Exterior Lens RH
- 2 - Triangle Cover
- 3 - Bulb Holder RH
- 4 - Bulb P21W
- 5 - Fog Reflector RH
- 6 - Flasher Reflector
- 7 - Bulb R10W
- 8 - Screw
- 9 - Screw
- 10 - Housing RH
- 11 - Terminal
- 12 - License Plate Lens
- 13 - Terminal
- 14 - Bulb Py21W
- 15 - Bulb P21/5W



### Note:

- Dimensions mm
- Scale 1/3





**ASPÖCK PORTUGAL, S.A.**  
Rua do Paraíso - Zona Industrial de Rebordões  
Apartado 131 3721 - 908 Vila de Cucujães - O. de Azemeis  
Telef. +351 256 856 070 \* Fax +351 256 856 079  
E-mail: geral@aspoeck.pt

Part Name :

**Multipoint V RH**

Part Number: **DH\_80125002**

Draw by :

Date :

**27/04/10**

Checked by :

Sheet Nr.

**9 de 9**

## Descriptive Memory

Rear Lamp = Multipoint V

Homologation ECE nº : 5946

Manufacturer : Aspöck Portugal

### Address :

Rua do Paraíso - Zona Industrial de Rebordões  
131 3721 - 208 Vila de Cucujães - O. de Azemeis

### Type:

DH\_80125001/2

### Base Structure :

Housing = PP

Lens = PMMA

Bulb Holder = Metal

12V / 24V

